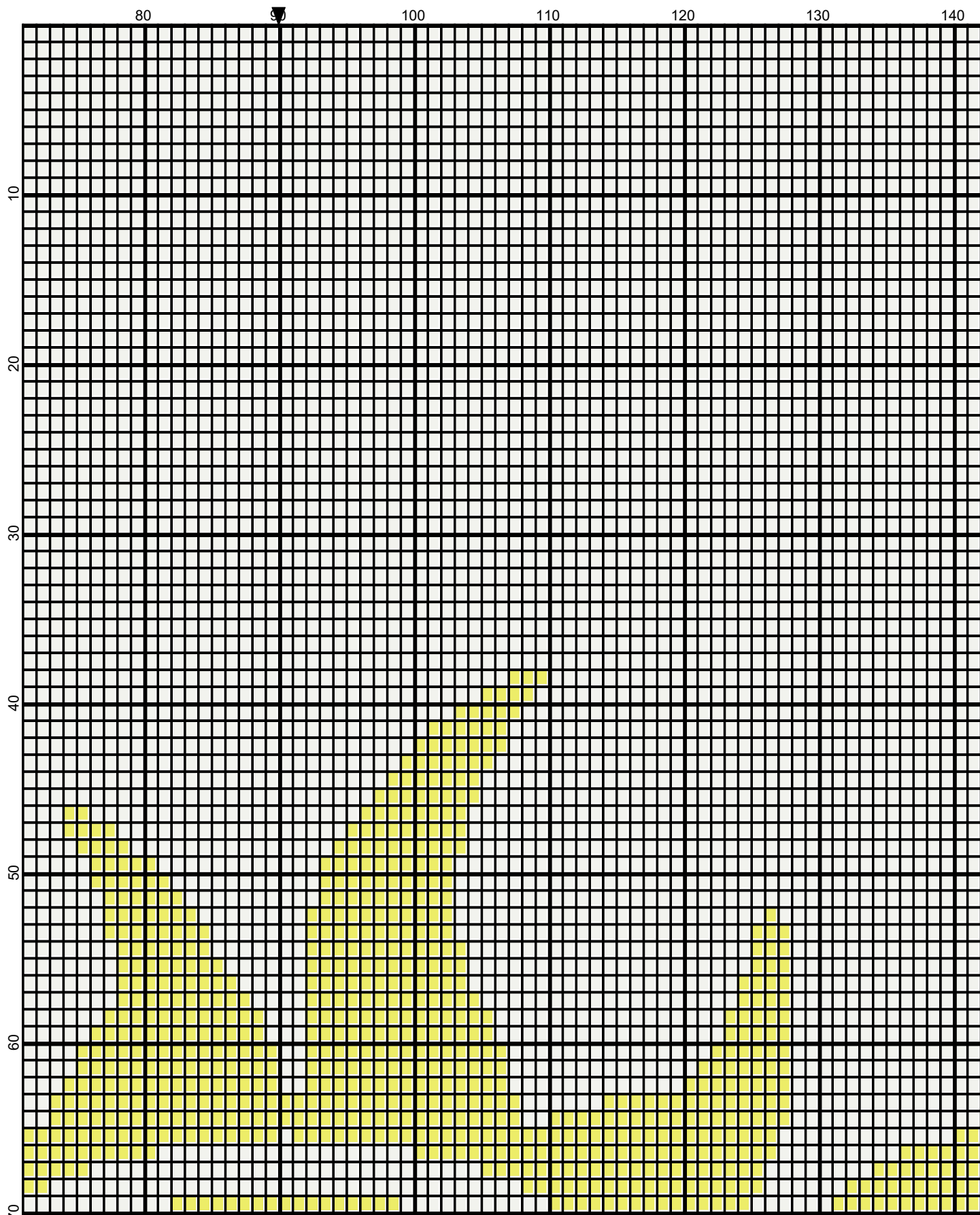
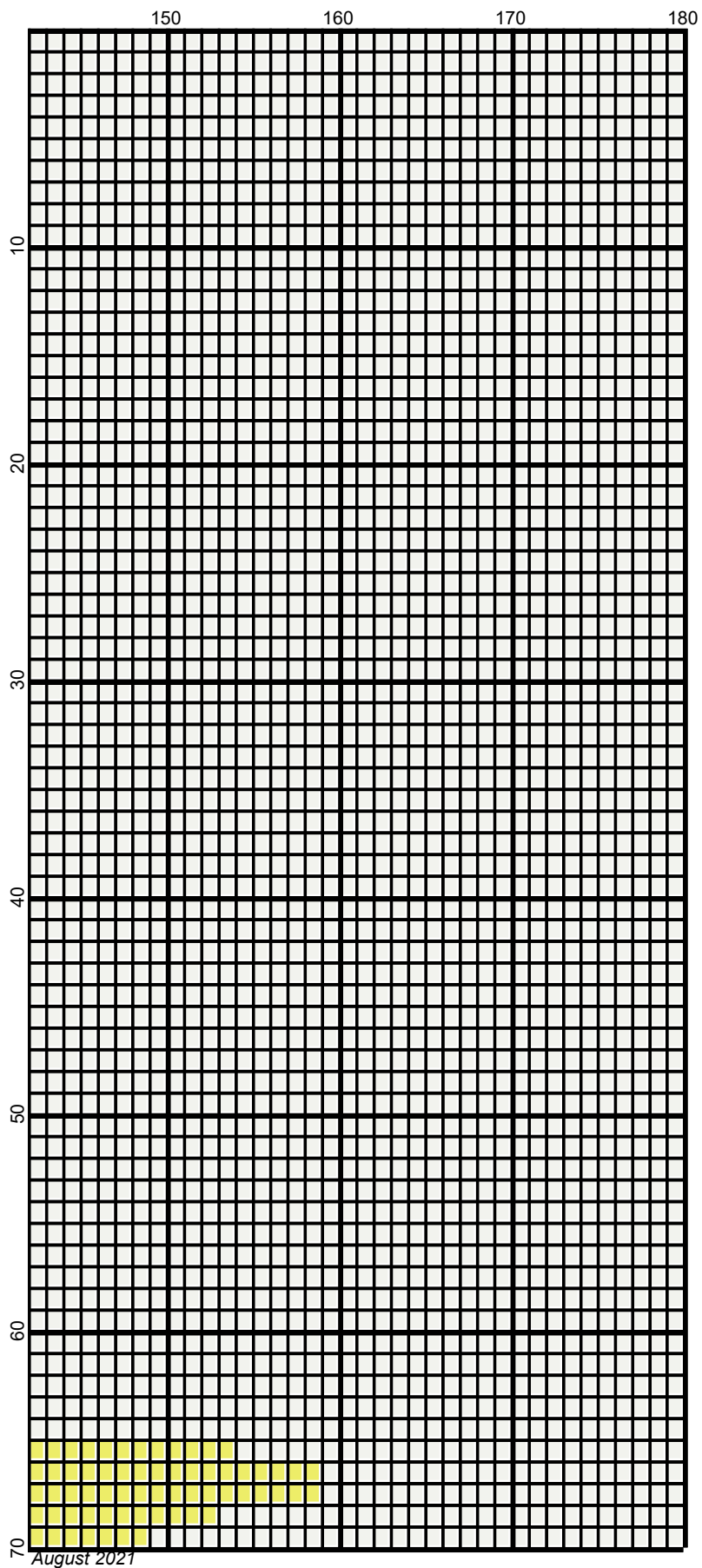


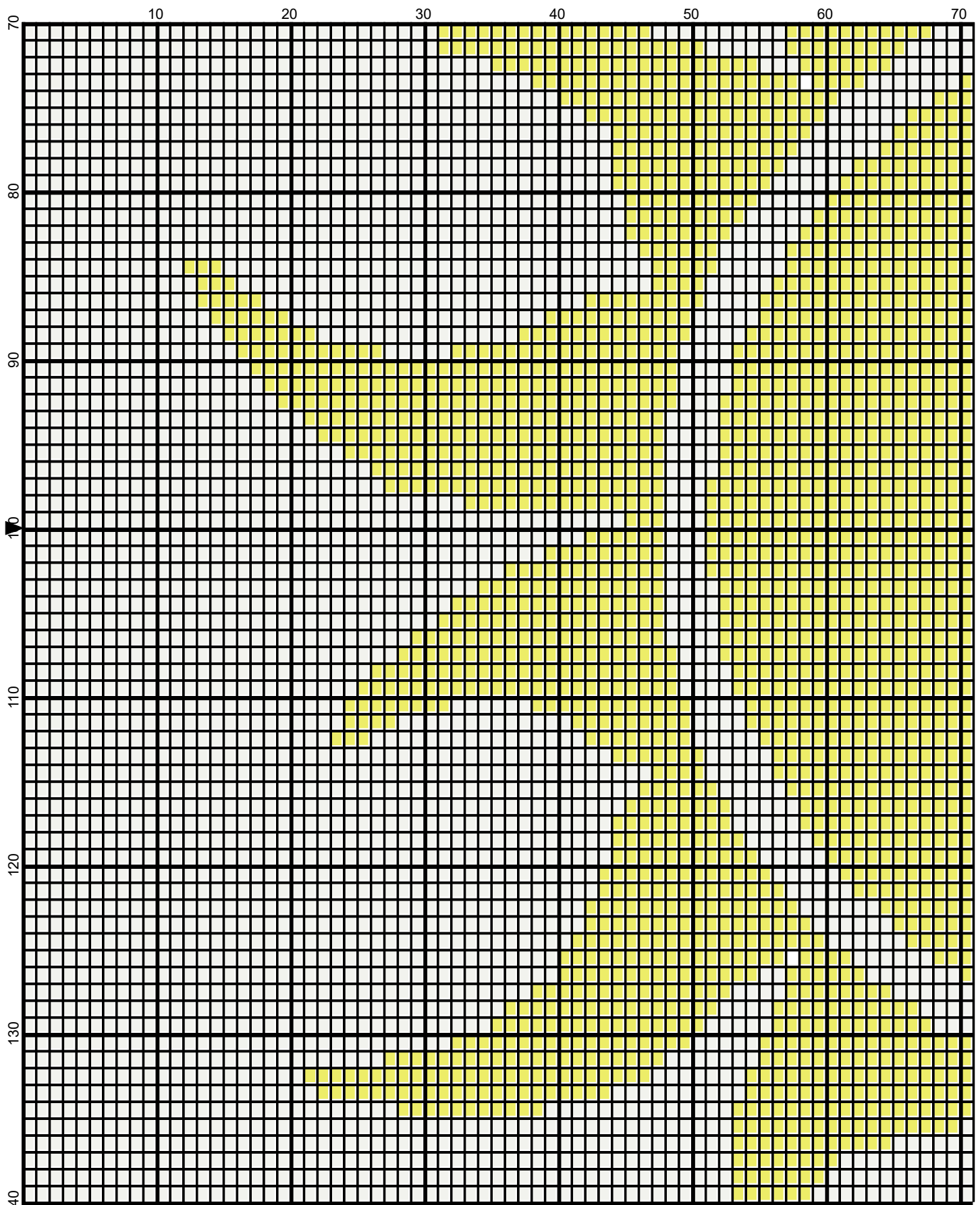
70 August 2021

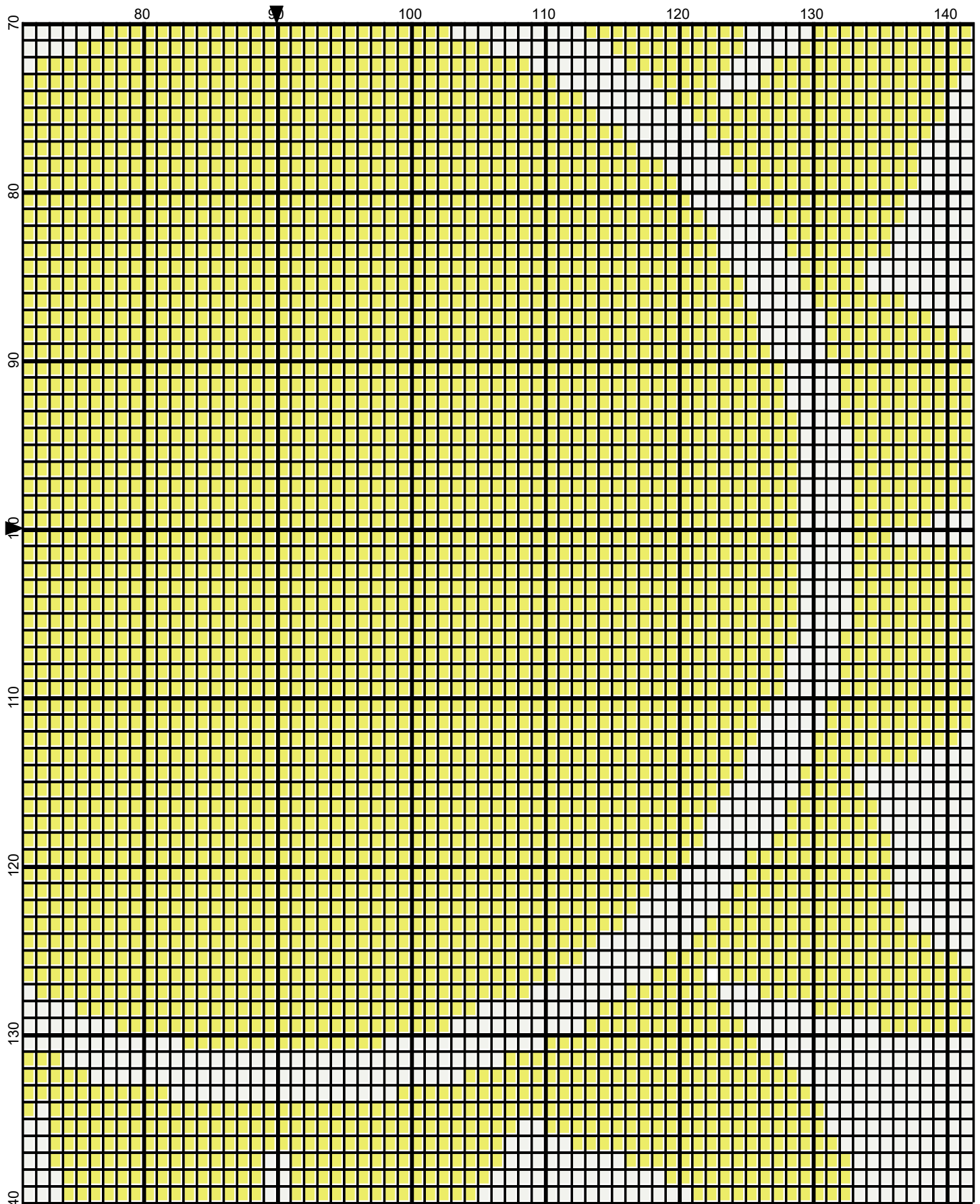


August 2021

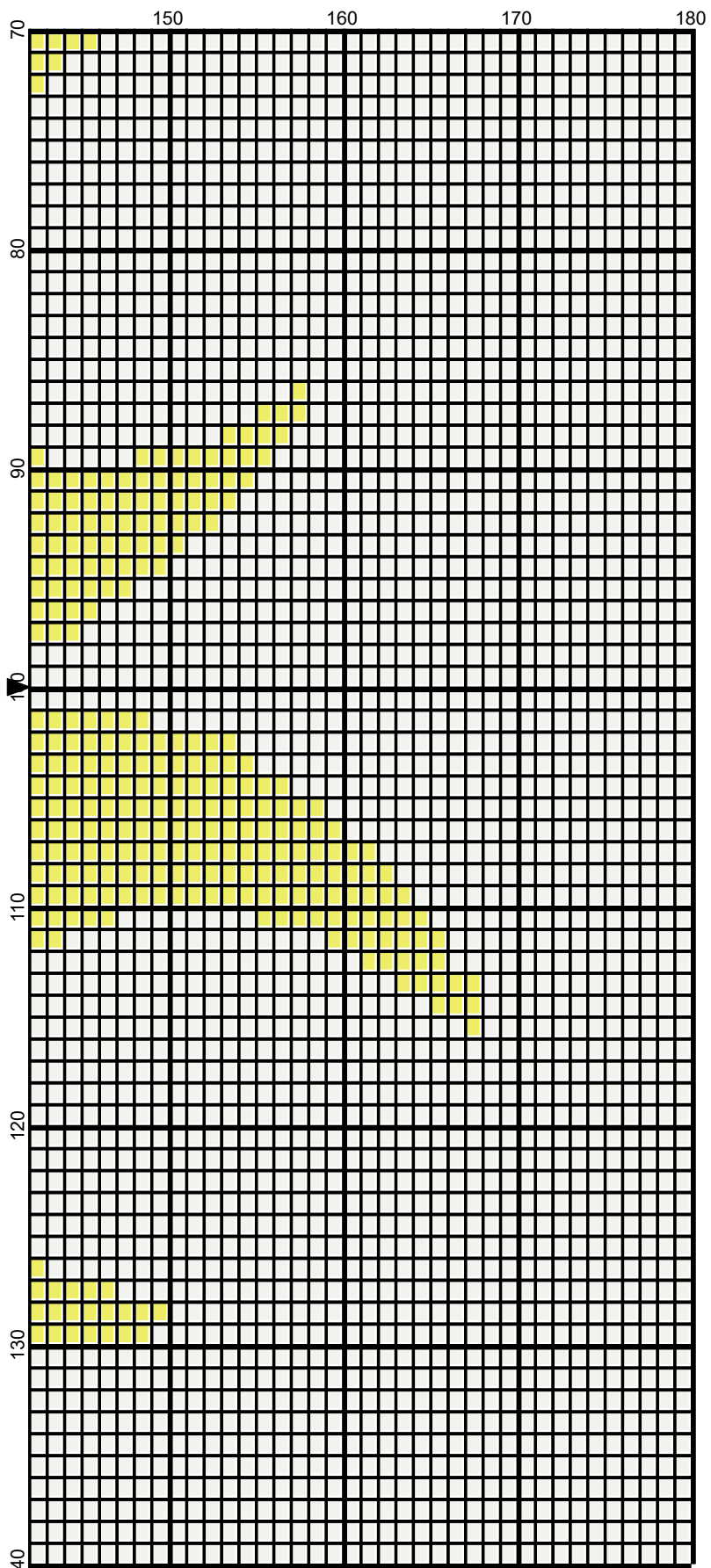


August 2021

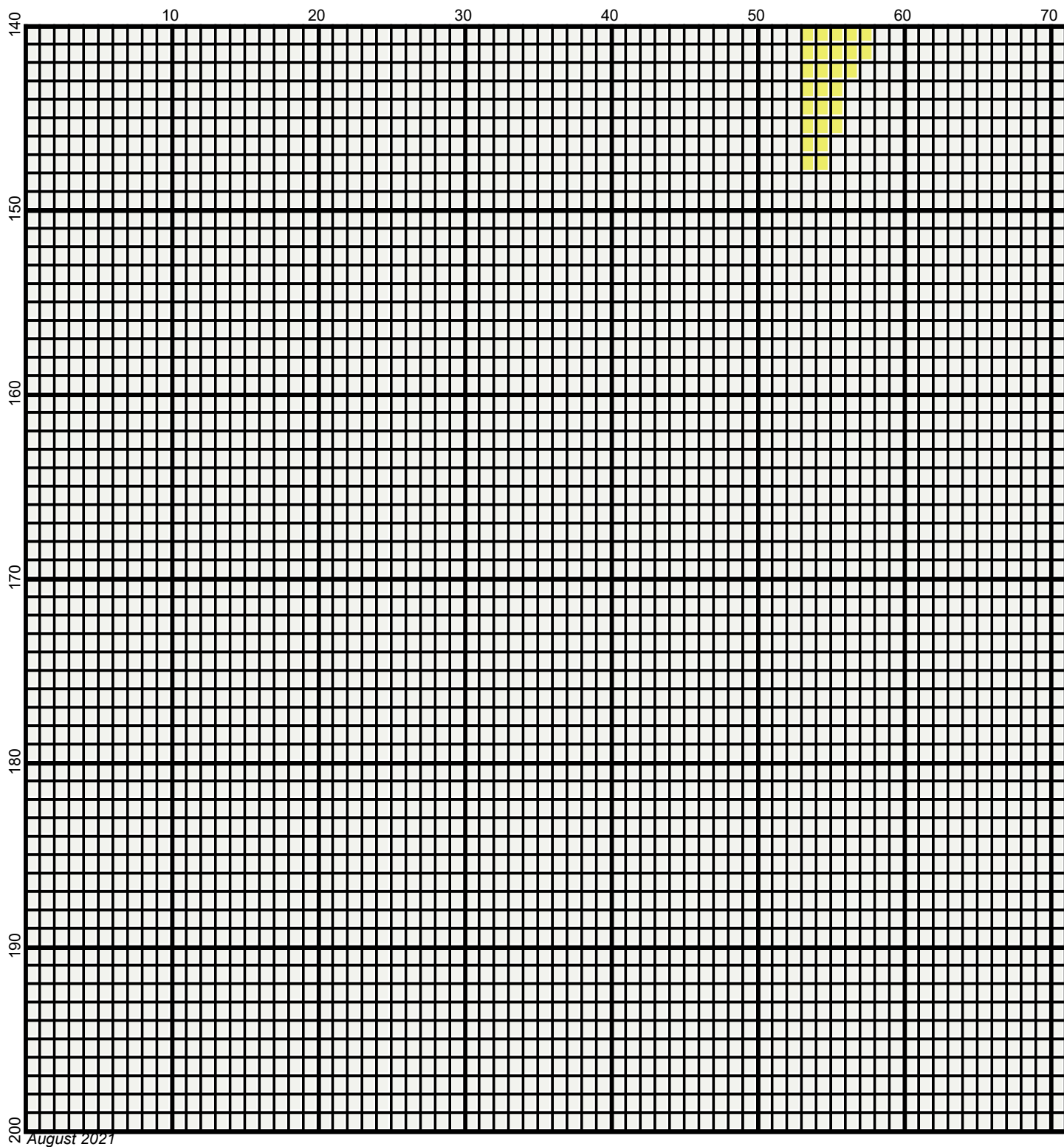




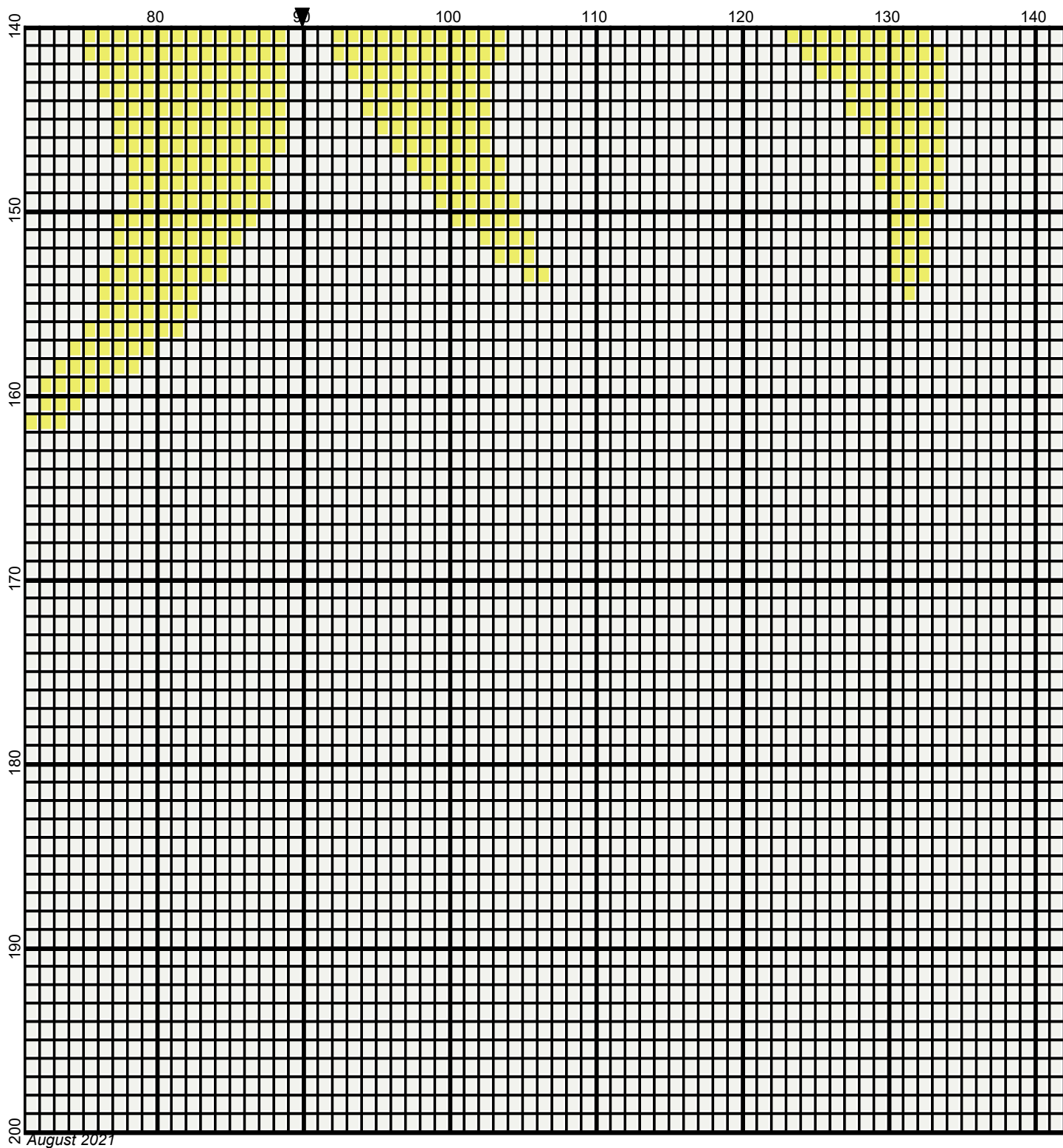
140 August 2021



August 2021

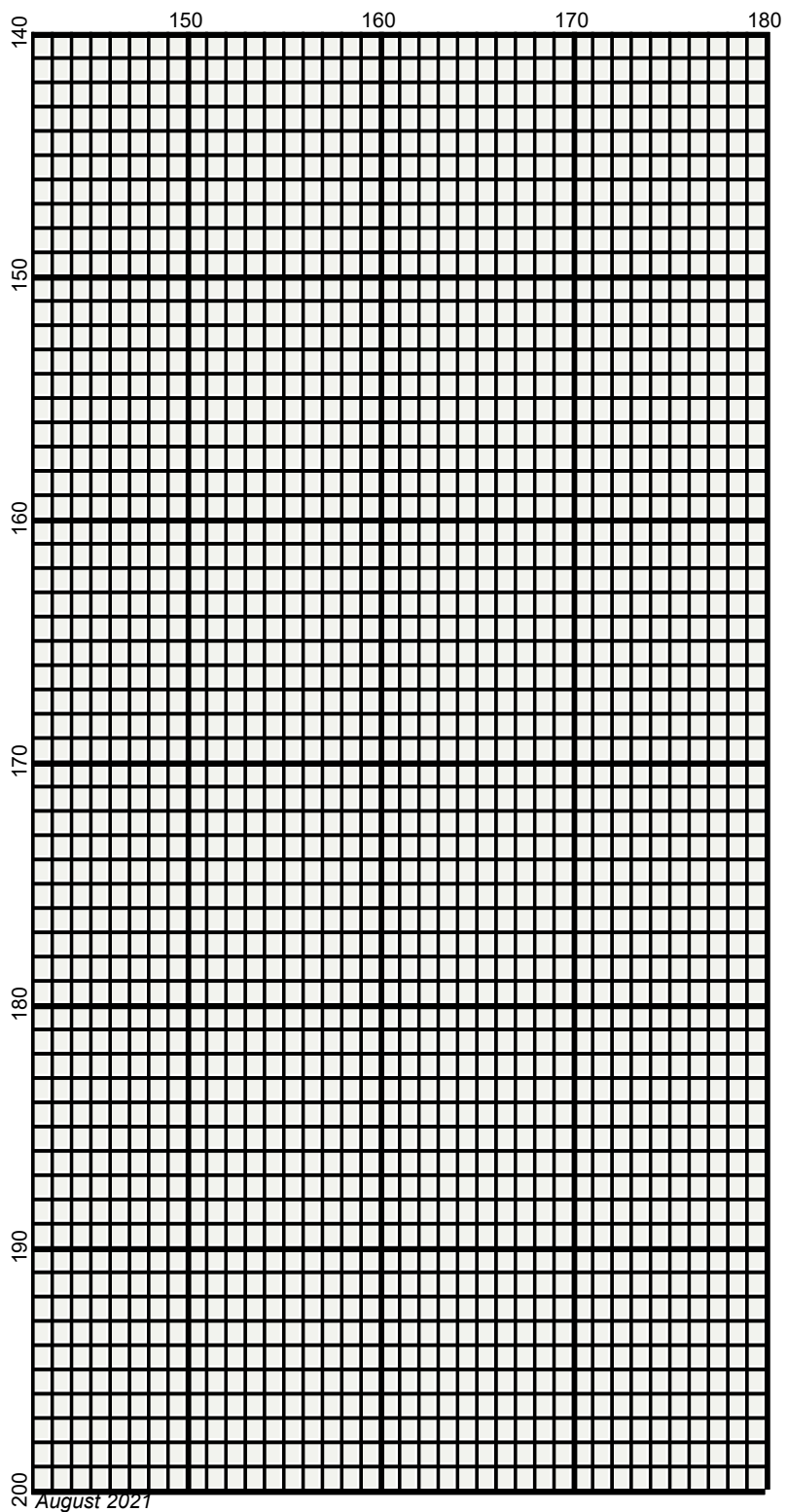


Legend:



■ RHS-324 □ RHS-316





# sun\_180X200

---

**Author:** Donna Hammell  
**Copyright:** August 2021  
**Website:** www.donnascrochetshoppe.com  
**Grid Size:** 180W x 200H  
**Design Area:** 18.00" x 25.00" (180 x 200 stitches)

**Legend:**

■ [2] RHS 324 Bright Yellow      □ [2] RHS 316 Soft White

Instructions for using the graph.

GAUGE= 5 STS = 1"  
4 ROWS = 1"

I USED SIZE "H" AFGHAN HOOK, USE WHATEVER SIZE GIVES YOU THE CORRECT GAUGE. CAN BE DONE IN AFGHAN STITCH OR SINGLE CROCHET.

EACH SQUARE ON THE GRAPH REPRESENTS 1 STITCH. FOR SINGLE CROCHET READ THE CHART FROM RIGHT TO LEFT, AND THEN LEFT TO RIGHT. IF USING AFGHAN STITCH ALWAYS READ FROM THE RIGHT.

TO START: CHAIN ONE MORE STITCH THAN GRAPH.

YOU WILL NEED TO ADD STITCHES TO MAKE THE PIECE WIDER, AND ADD ROWS TO MAKE IT LONGER. THE DESIGN IS CENTERED, SO ADD STITCHES EVENLY TO BOTH SIDES.

ESTIMATED YARN NEEDED:  
BRIGHT YELLOW; 12 OUNCES  
WHITE: 36 OUNCES