



Legend:

■ RHS-312 □ RHS-316

# your\_wings\_240x260

---

**Author:** Donna Hammell  
**Copyright:** August 2025  
**Website:** [www.donnascrochetshoppe.com](http://www.donnascrochetshoppe.com)  
**Grid Size:** 240W x 260H  
**Design Area:** 24.00" x 32.50" (240 x 260 stitches)

## Legend:

■ [2] RHS 312 Black      □ [2] RHS 316 Soft White

Instructions for using the graph.

GAUGE= 5 STS = 1"  
4 ROWS = 1"

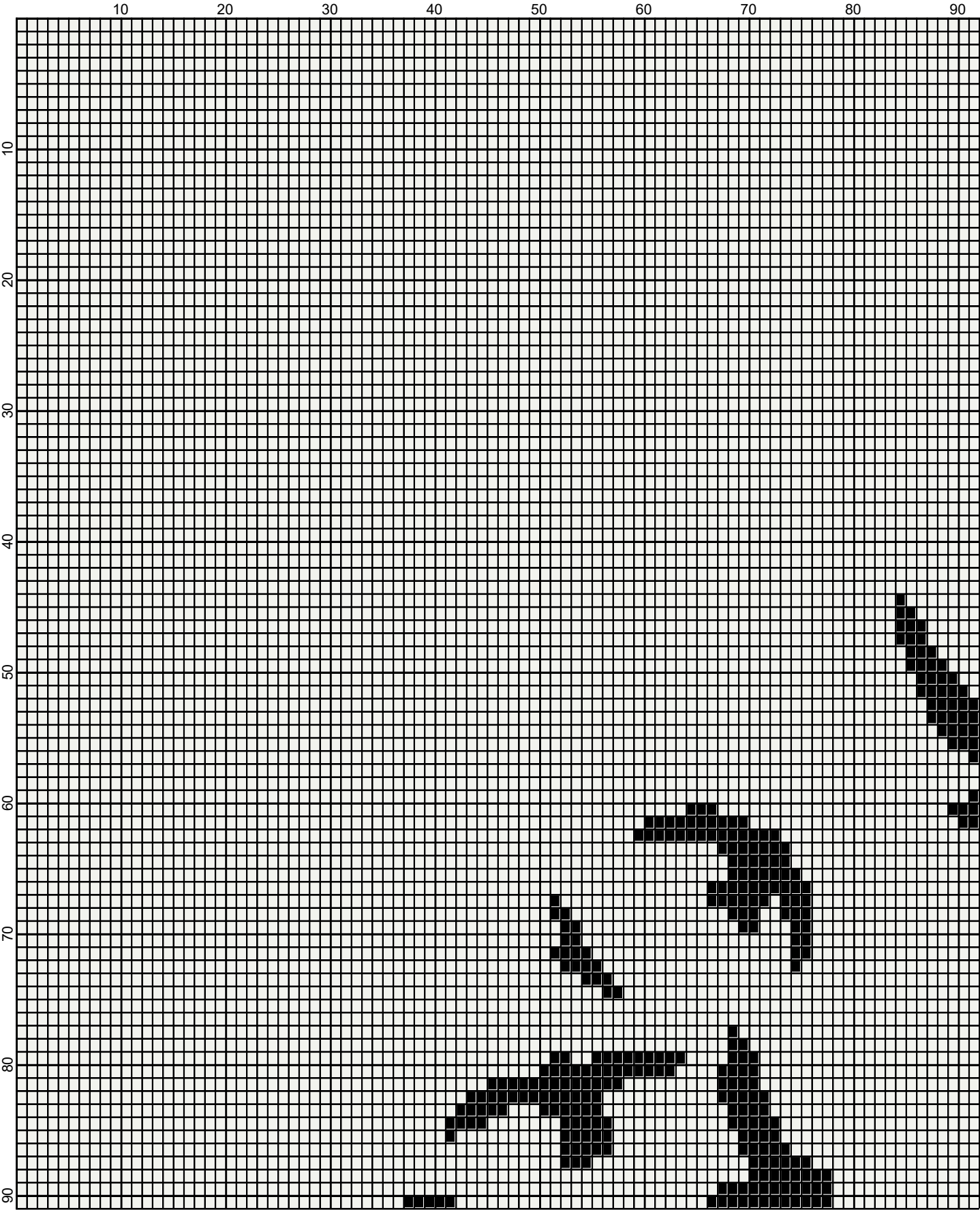
I USED SIZE "H" AFGHAN HOOK,USE WHATEVER SIZE GIVES YOU THE CORRECT GAUGE. CAN BE DONE IN AFGHAN STITCH OR SINGLE CROCHET.

EACH SQUARE ON THE GRAPH REPRESENTS 1 STITCH. FOR SINGLE CROCHET READ THE CHART FROM RIGHT TO LEFT, AND THEN LEFT TO RIGHT. IF USING AFGHAN STITCH ALWAYS READ FROM THE RIGHT.

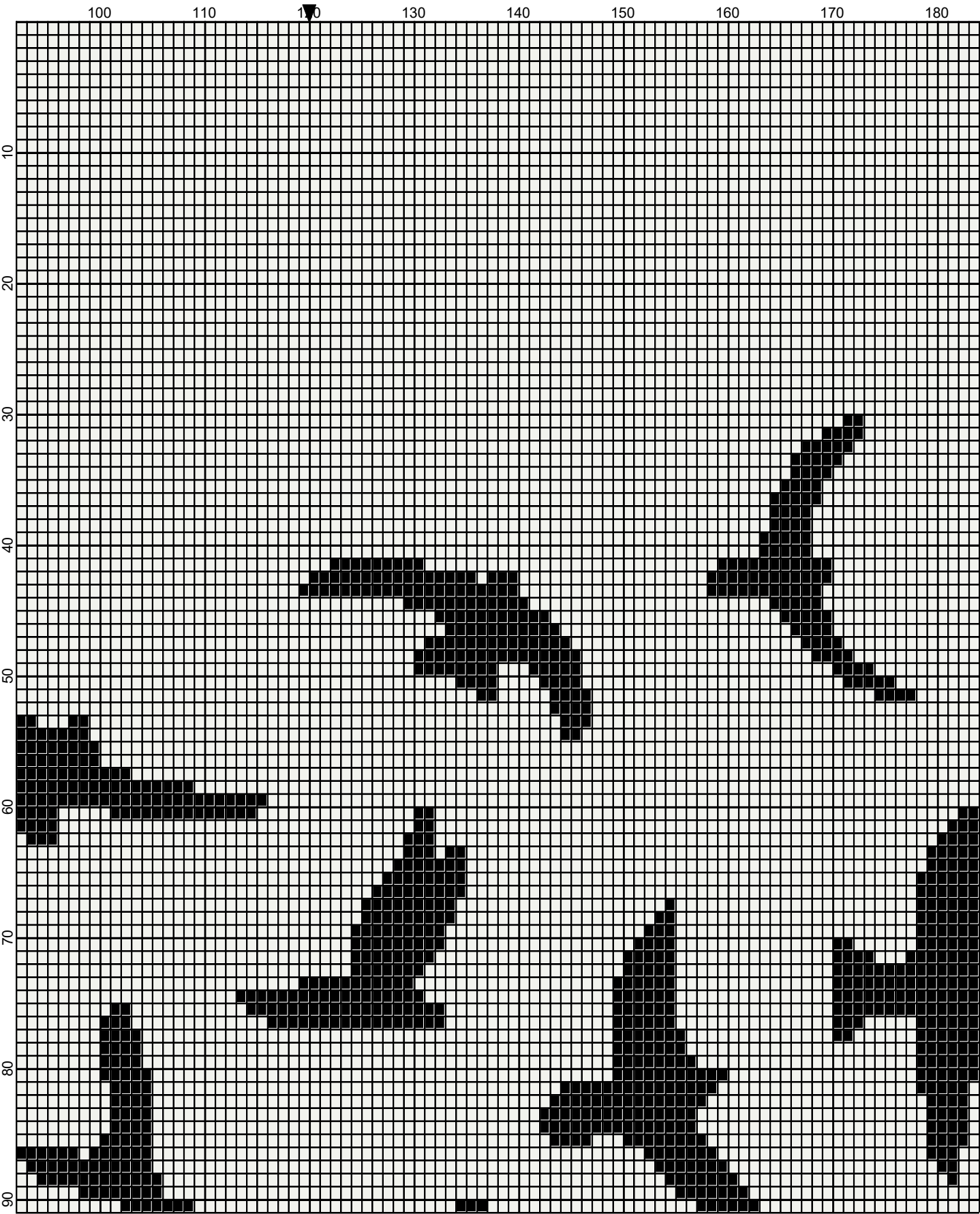
TO START: CHAIN ONE MORE STITCH THAN GRAPH.

IF YOU NEED TO MAKE THE PATTERN LARGER ADD STITCHES EQUALLY TO EACH SIDE AND ROWS TOP AND BOTTOM.

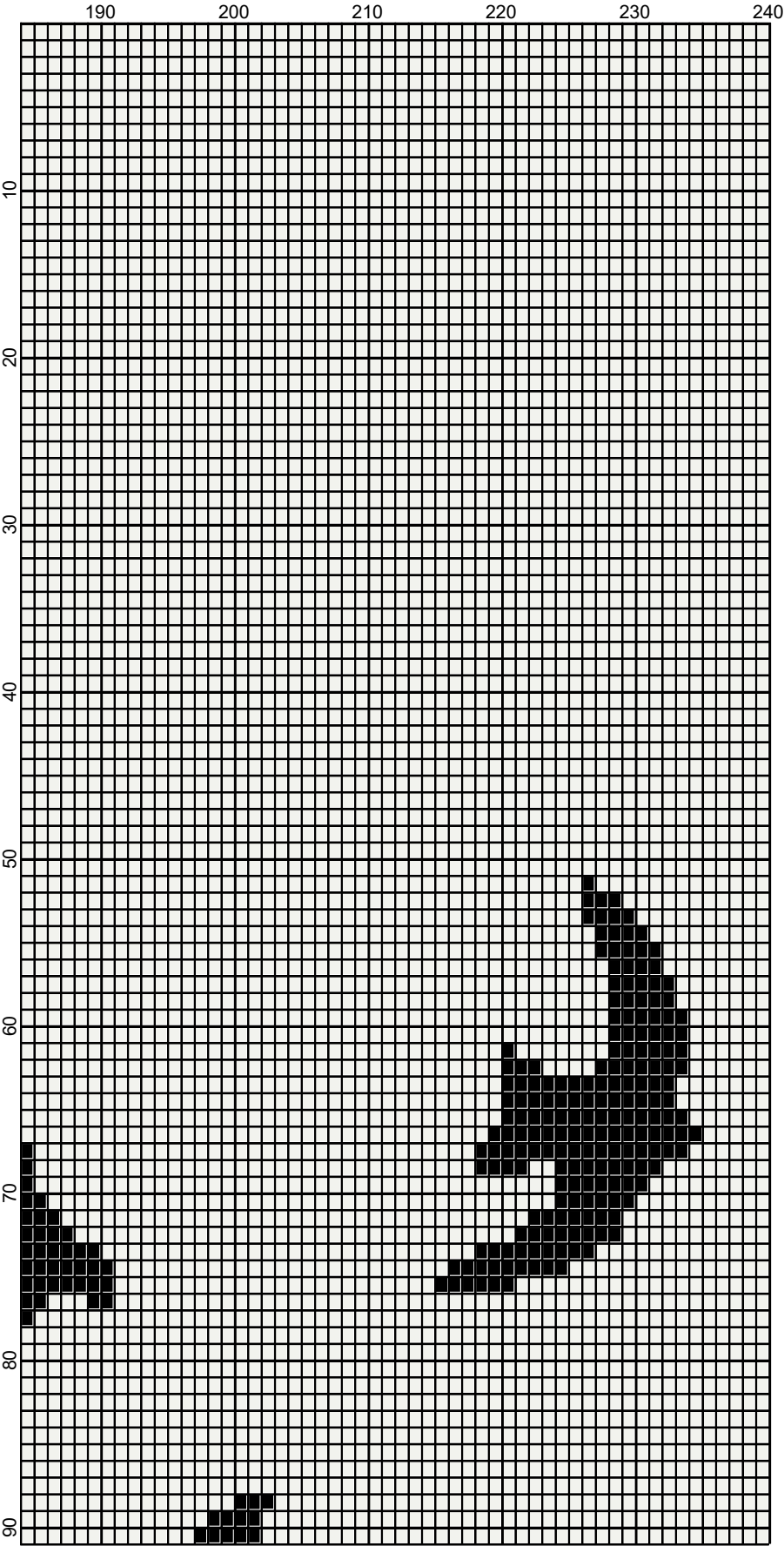
ESTIMATED YARN NEEDED:  
WHITE:66 OUNCES/3390 YDS  
BLACK:16 OUNCES/753



August 2025



August 2025



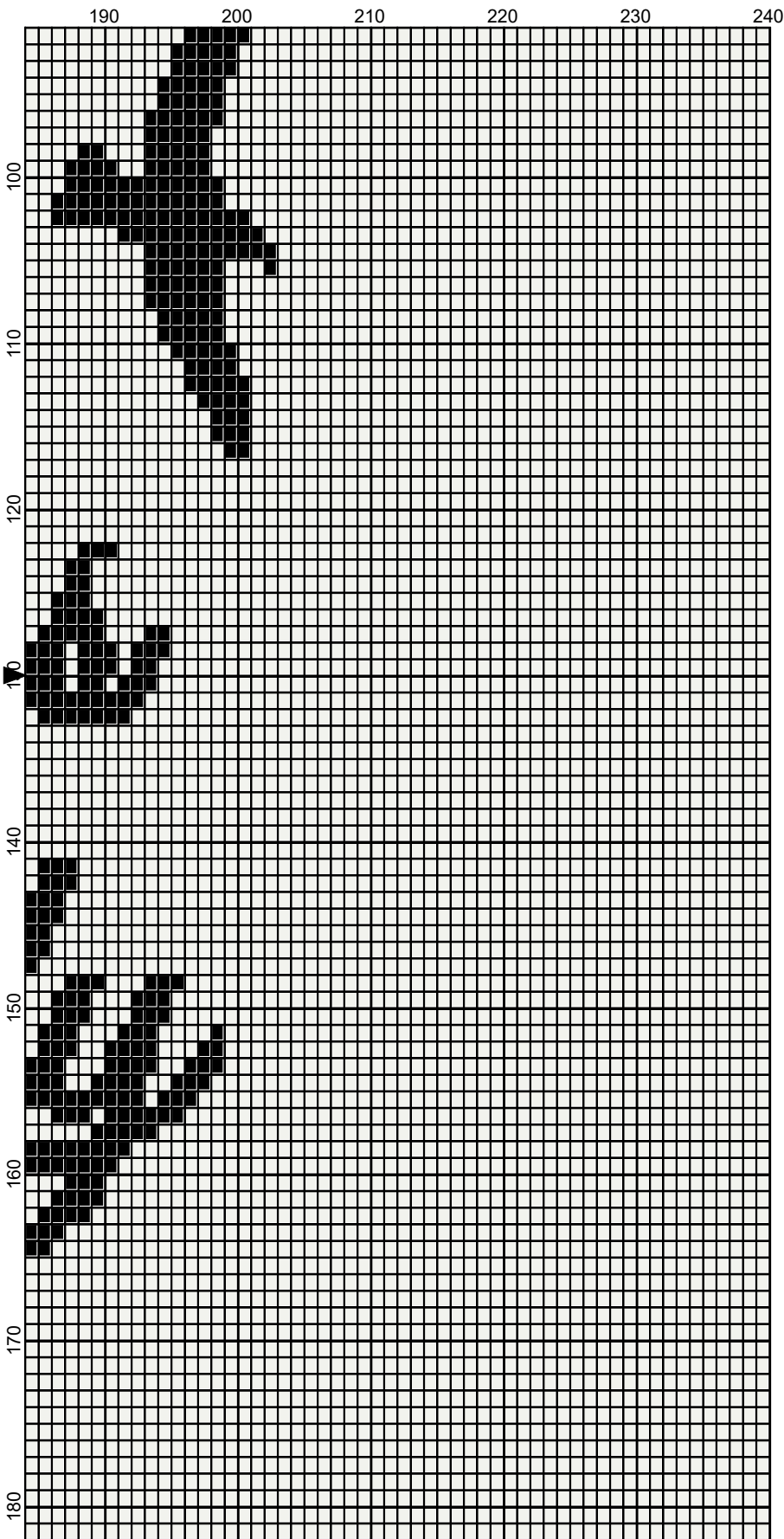
August 2025



August 2025



August 2025

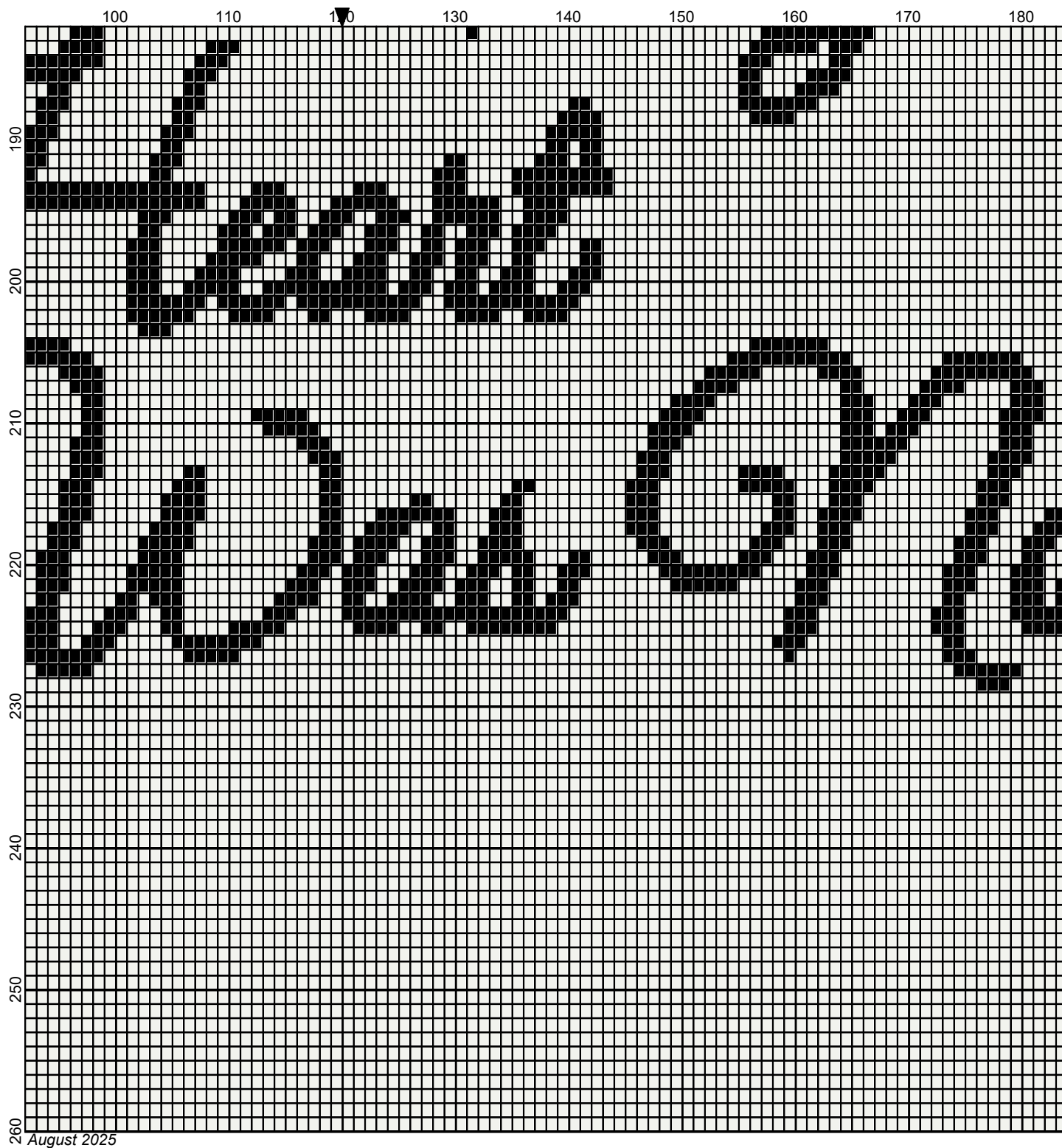


August 2025





Legend:



■ RHS-312 □ RHS-316

