



Legend:

■ RHS-312 □ RHS-311 ■ RHS-722

wild_pink_180x200

Author: Donna Hammell
Copyright: September 2021
Website: www.donnascrochetshoppe.com
Grid Size: 180W x 200H
Design Area: 18.00" x 25.00" (180 x 200 stitches)

Legend:

■ [2] RHS 312 Black

□ [2] RHS 311 WHITE

■ [2] RHS 722 Pretty N Pink

Instructions for using the graph.

GAUGE= 5 STS = 1"
4 ROWS = 1"

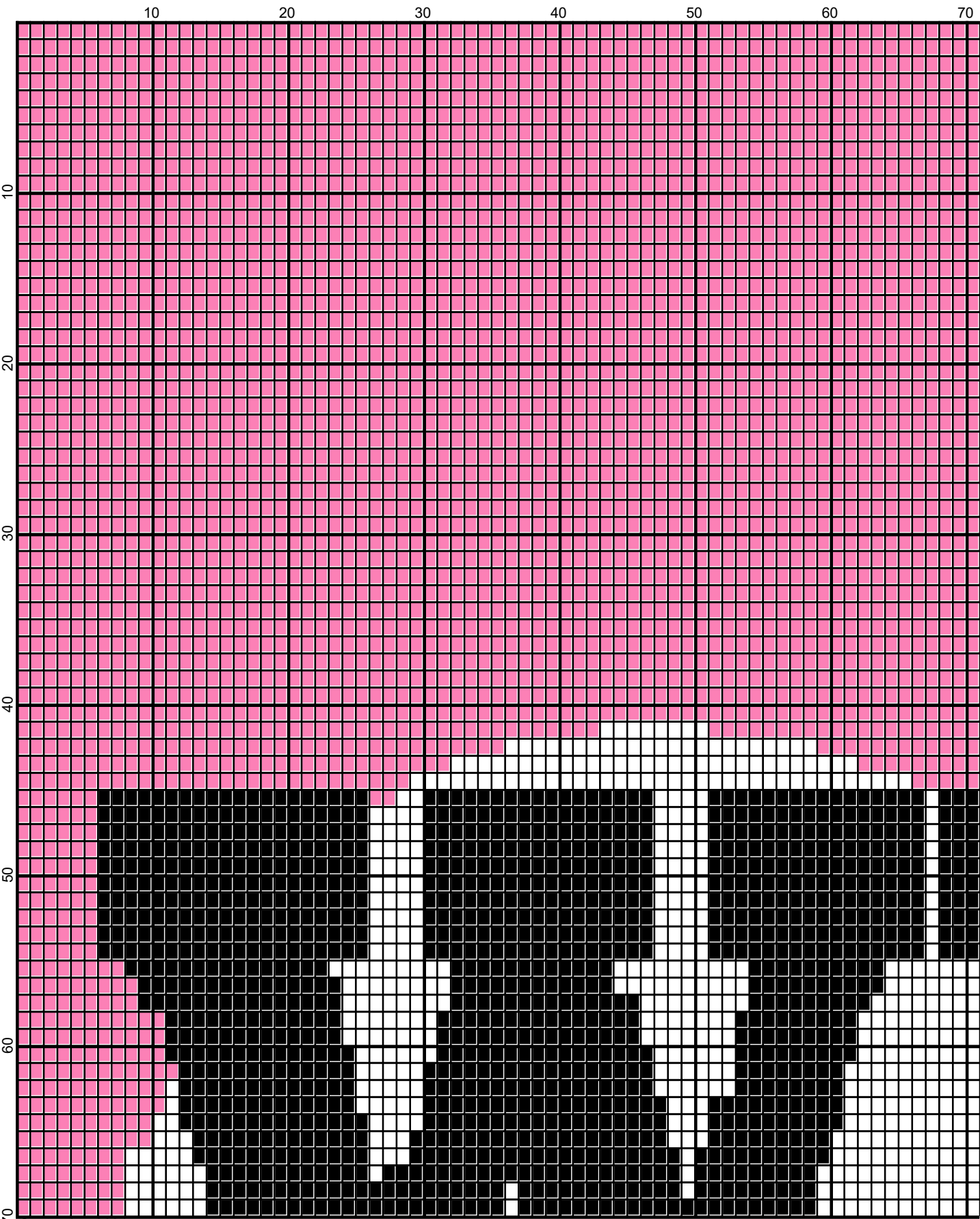
I USED SIZE "H" AFGHAN HOOK,USE WHATEVER SIZE GIVES YOU THE CORRECT GAUGE. CAN BE DONE IN AFGHAN STITCH OR SINGLE CROCHET.

EACH SQUARE ON THE GRAPH REPRESENTS 1 STITCH. FOR SINGLE CROCHET READ THE CHART FROM RIGHT TO LEFT, AND THEN LEFT TO RIGHT. IF USING AFGHAN STITCH ALWAYS READ FROM THE RIGHT.

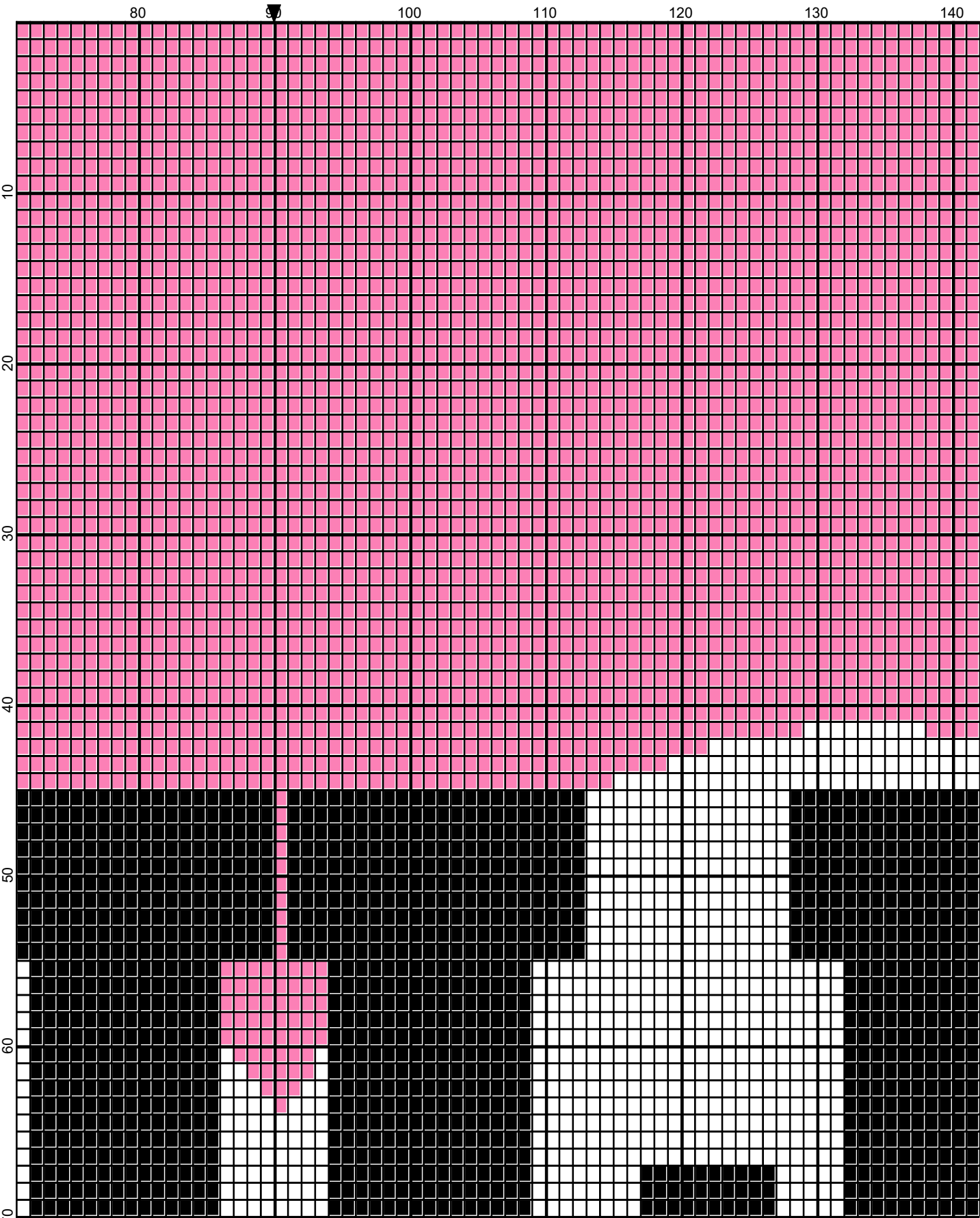
TO START: CHAIN ONE MORE STITCH THAN GRAPH.

ESTIMATED YARN NEEDED:

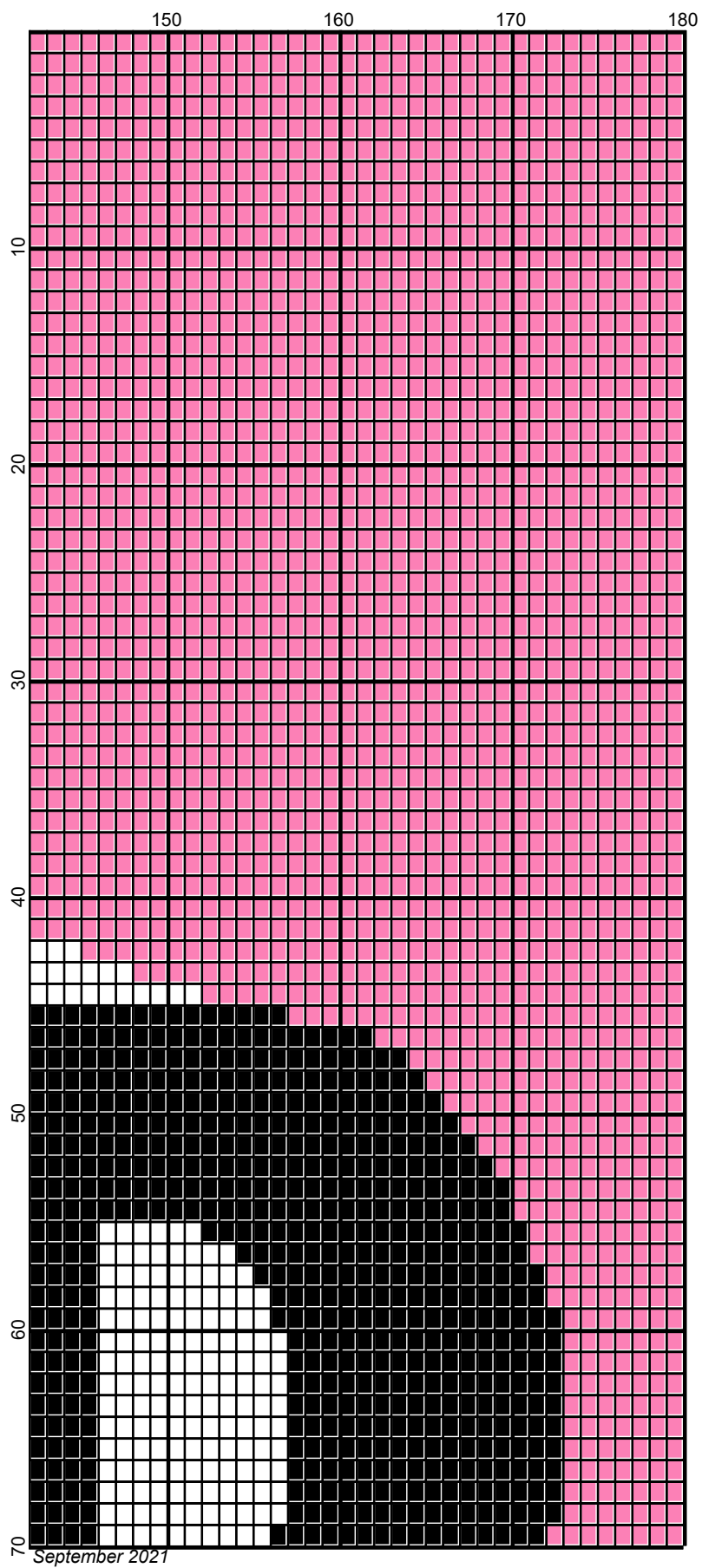
PINK: 28 OUNCES
WHITE:10 OUNCES
BLACK: 12 OUNCES



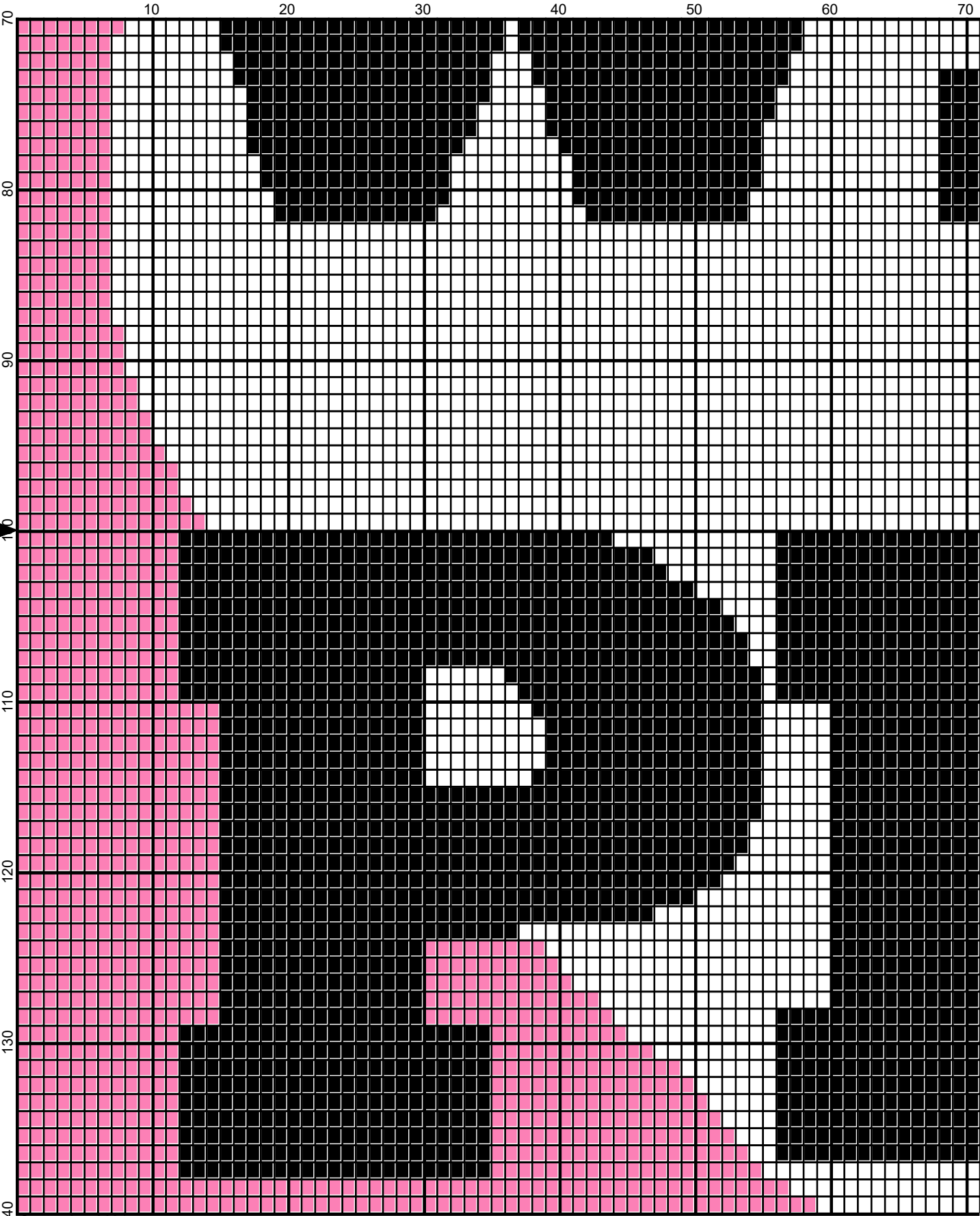
September 2021



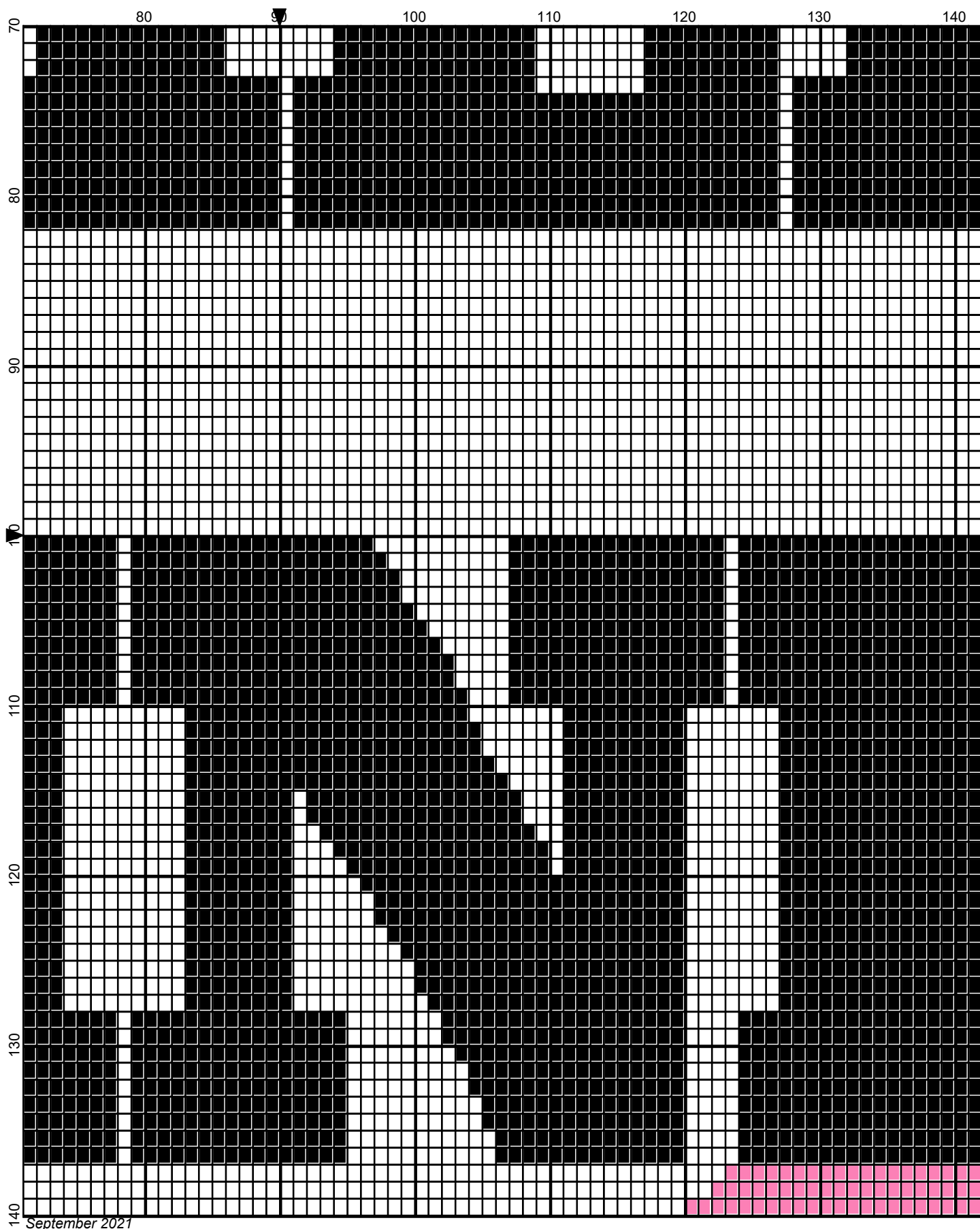
September 2021



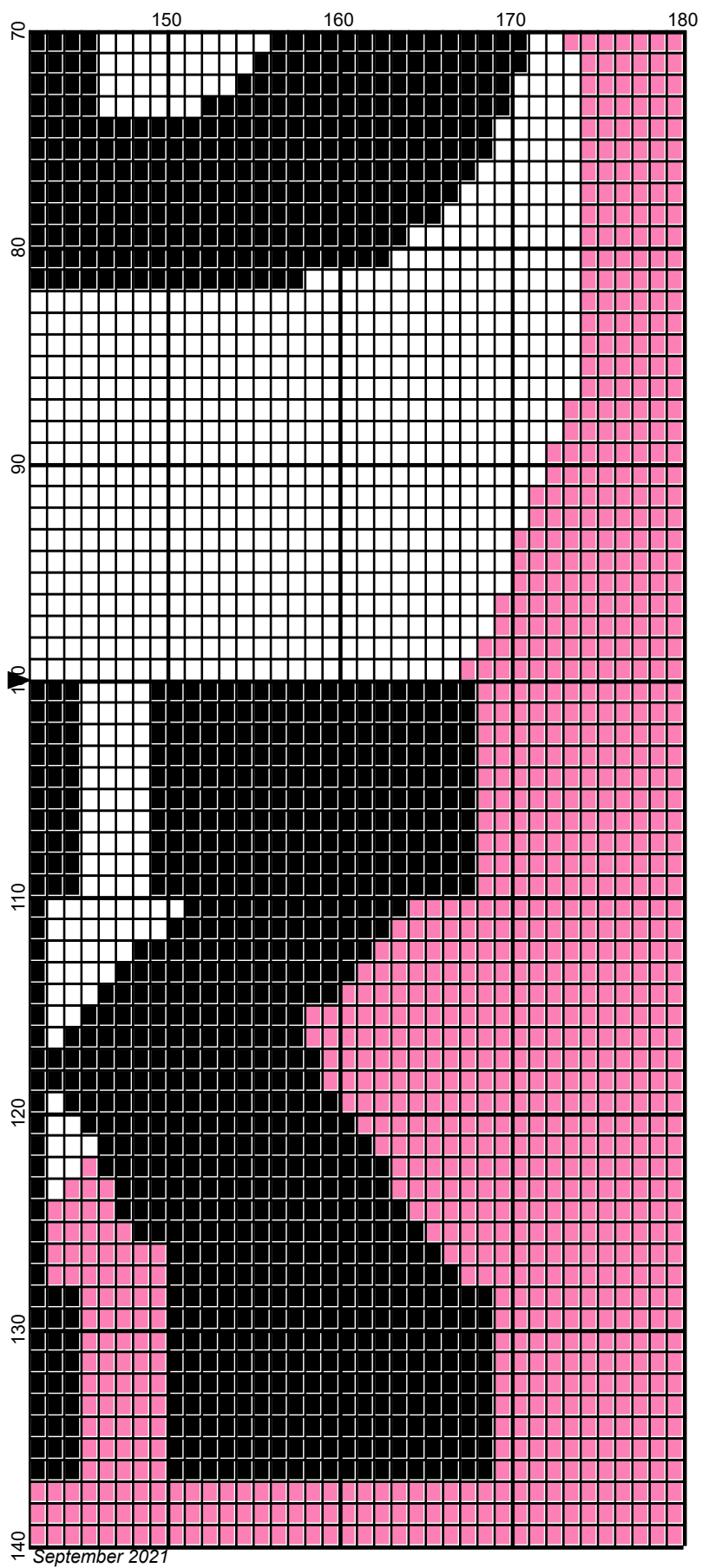
September 2021

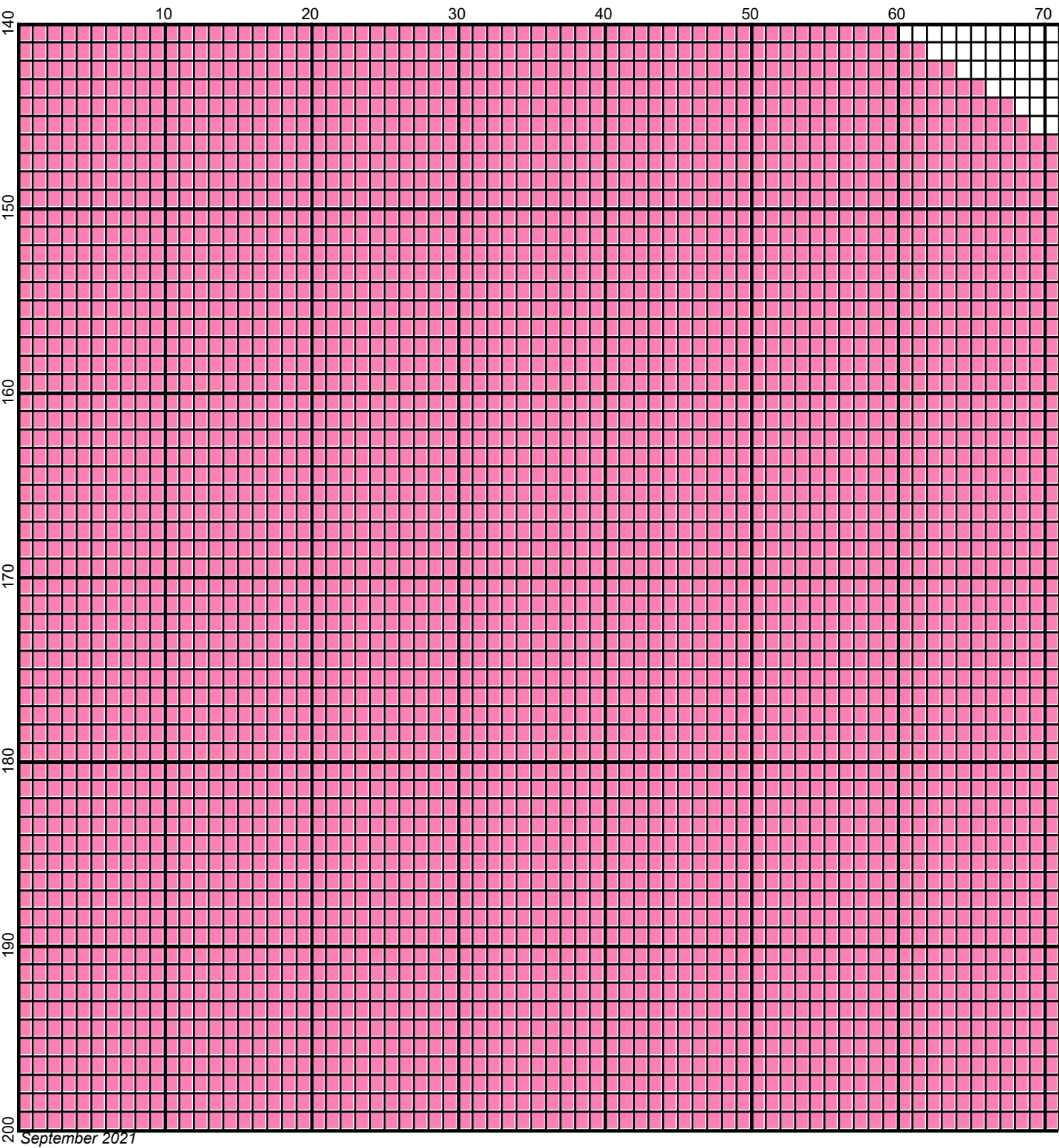


September 2021

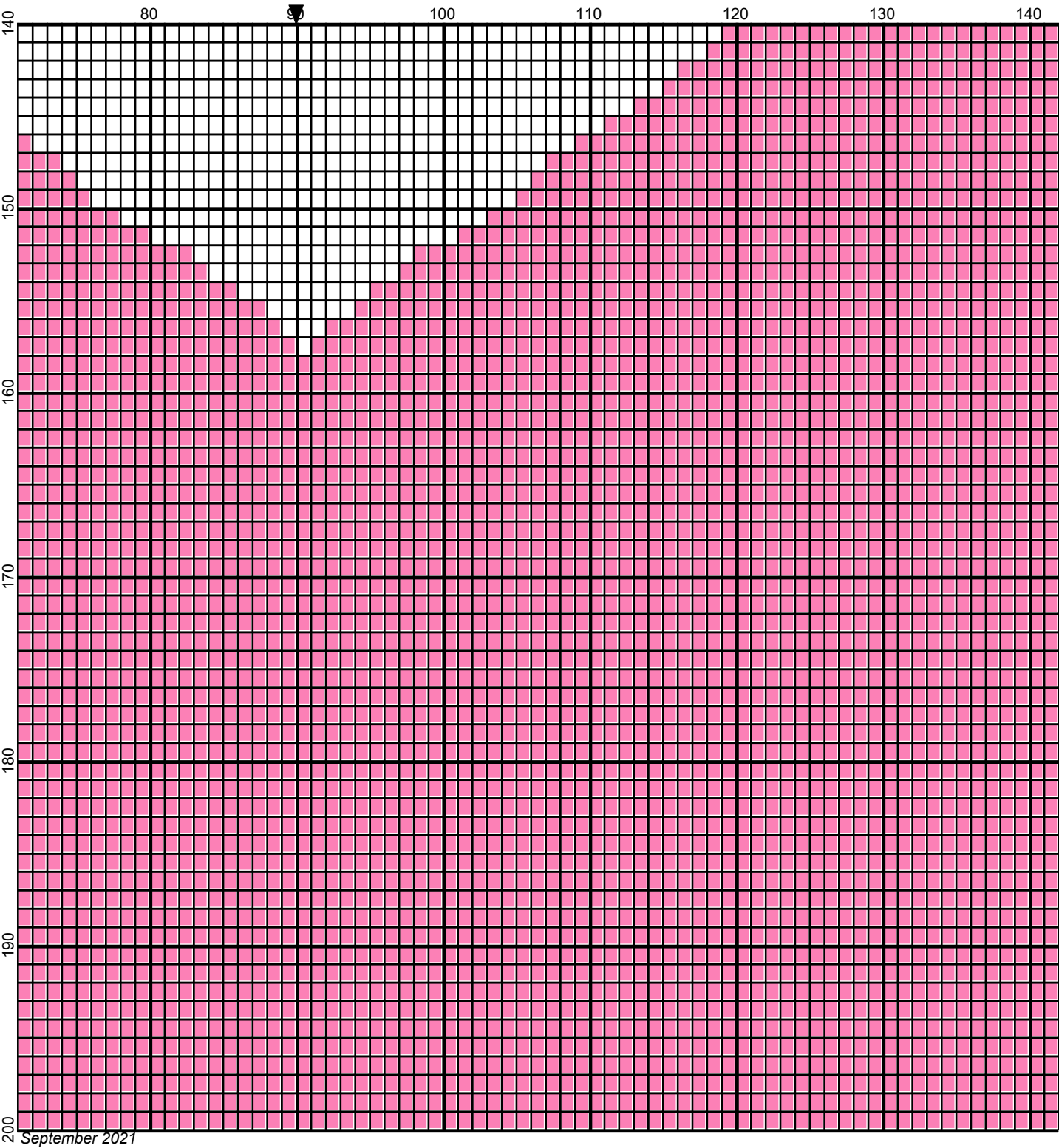


September 2021





Legend:



■ RHS-312 □ RHS-311 ■ RHS-722

