

10 20 30 40 50 60 70 80 90 100

10

20

30

40

50

60

70

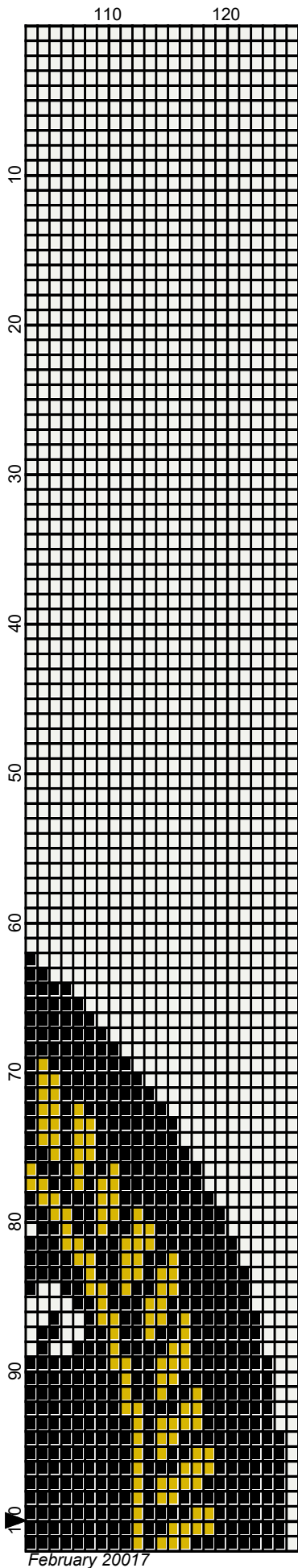
80

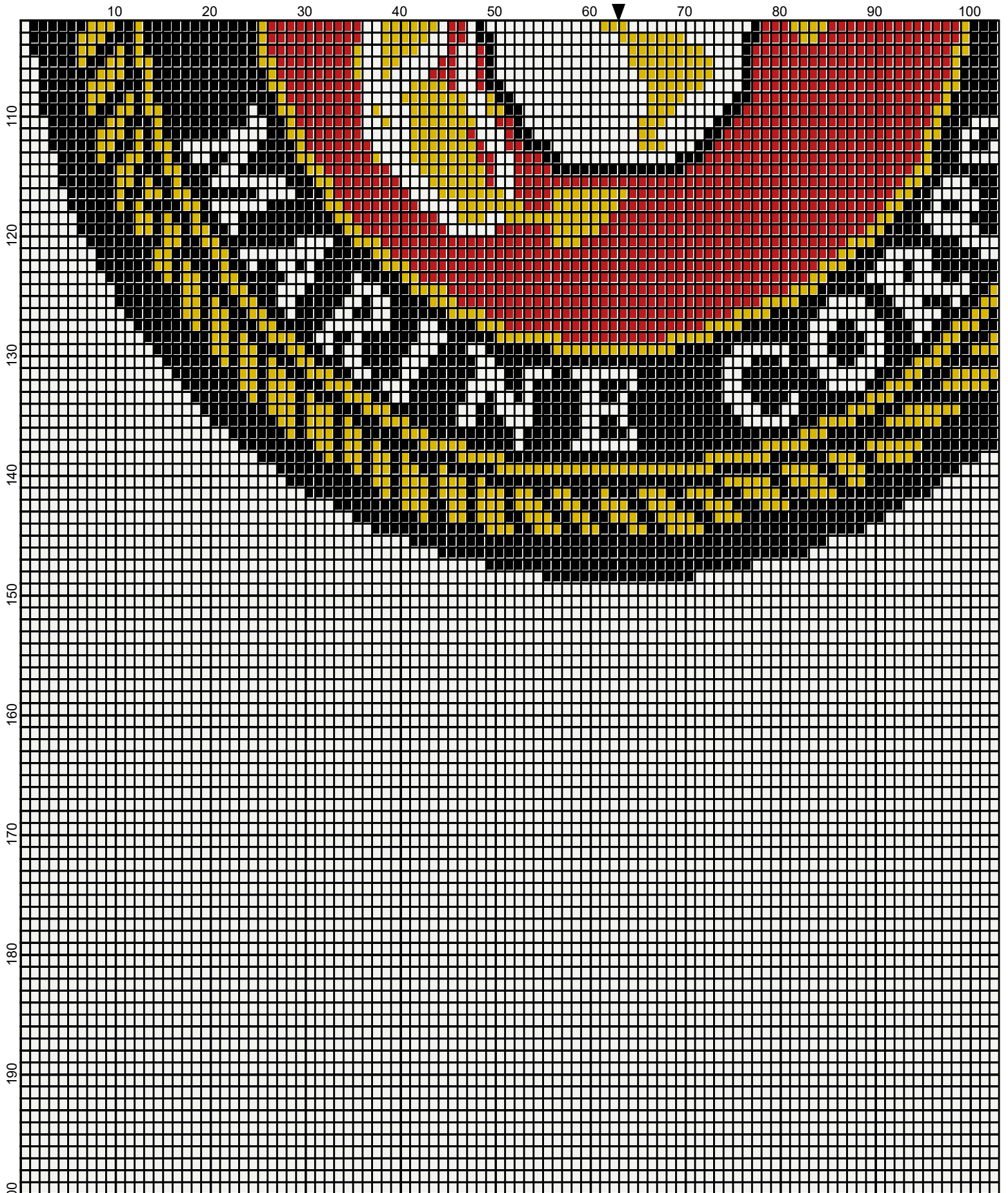
90

100

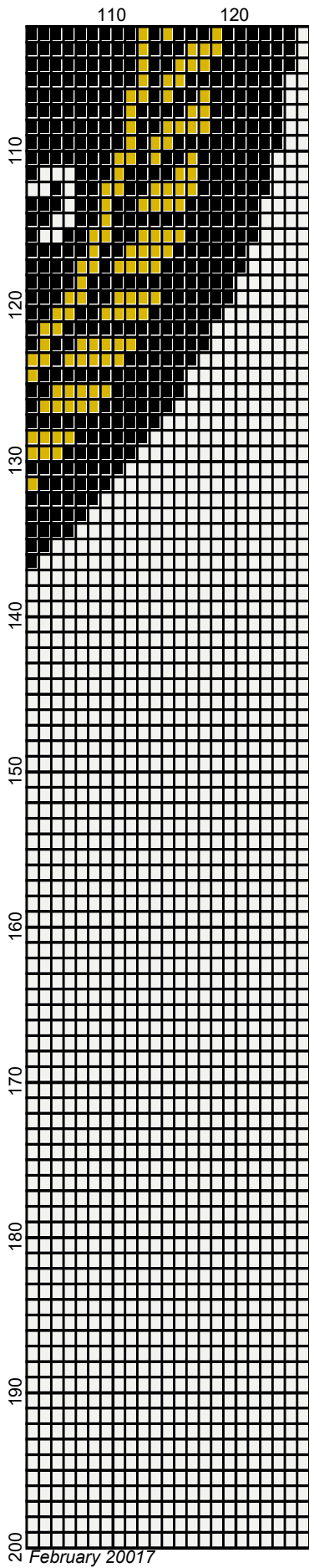


February 20017





February 20017




February 20017

usmarines_126x200


Author: Donna Hammell
Company: Donna's Crochet Shoppe
Copyright: February 20017
Website: www.donnascrochetshoppe.com
Grid Size: 126W x 200H
Design Area: 12.60" x 25.00" (126 x 200 stitches)

Legend:

 [2] RHS 316 Soft White

 [2] RHS 321 Gold

 [2] RHS 390 Hot Red

 [2] RHS 312 Black

Instructions for using the graph.

GAUGE= 5 STS = 1"
4 ROWS = 1"

I USED SIZE "H" AFGHAN HOOK, USE WHATEVER SIZE GIVES YOU THE CORRECT GAUGE. CAN BE DONE IN AFGHAN STITCH OR SINGLE CROCHET.

EACH SQUARE ON THE GRAPH REPRESENTS 1 STITCH. FOR SINGLE CROCHET READ THE CHART FROM RIGHT TO LEFT, AND THEN LEFT TO RIGHT. IF USING AFGHAN STITCH ALWAYS READ FROM THE RIGHT.

TO START: CHAIN ONE MORE STITCH THAN GRAPH.

YOU WILL NEED TO ADD STITCHES TO MAKE THE PIECE WIDER, AND ADD ROWS TO MAKE IT LONGER. THE DESIGN IS CENTERED, SO ADD STITCHES EVENLY TO BOTH SIDES.

ESTIMATED YARN NEEDED:

GOLD: 4 OUNCES
SOFT WHITE: 11 OUNCES
RED: 7 OUNCES
BLACK: 6 OUNCES
WHITE : 12 OUNCES