



Legend:
■ RHS-886 □ RHS-316

university_kentucky_wildcats

Author: Donna Hammell
Copyright: April 2025
Website: www.donnascrochetshoppe.com
Grid Size: 180W x 220H
Design Area: 18.00" x 27.50" (180 x 220 stitches)

Legend:

■ [2] RHS 886 Blue □ [2] RHS 316 Soft White

Instructions for using the graph.

GAUGE= 5 STS = 1"
4 ROWS = 1"

I USED SIZE "H" AFGHAN HOOK,USE WHATEVER SIZE GIVES YOU THE CORRECT GAUGE. CAN BE DONE IN AFGHAN STITCH OR SINGLE CROCHET.

EACH SQUARE ON THE GRAPH REPRESENTS 1 STITCH. FOR SINGLE CROCHET READ THE CHART FROM RIGHT TO LEFT, AND THEN LEFT TO RIGHT. IF USING AFGHAN STITCH ALWAYS READ FROM THE RIGHT.

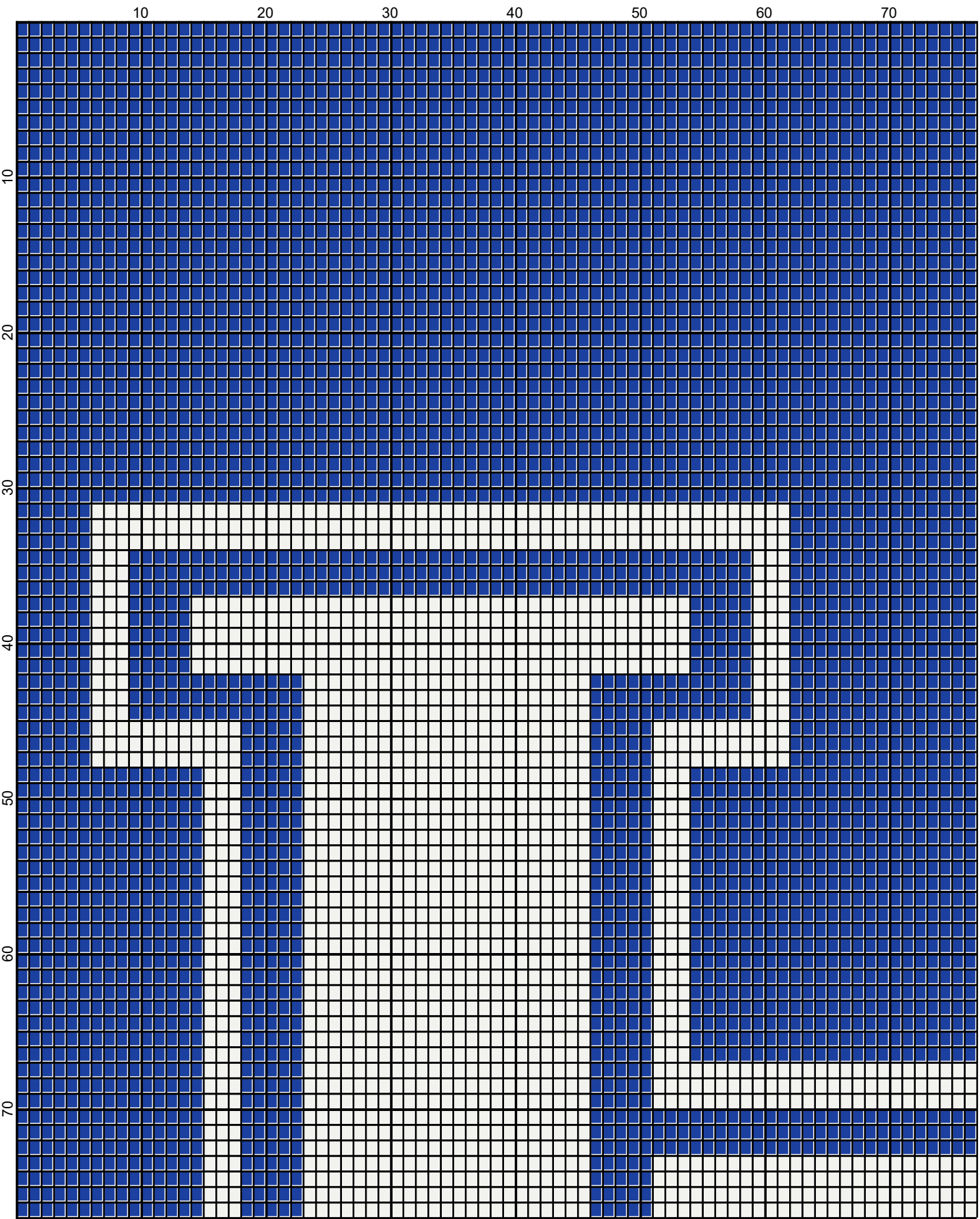
TO START: CHAIN ONE MORE STITCH THAN GRAPH.

IF YOU NEED TO MAKE THE PIECE WIDER ADD AN EVEN NUMBER OF STITCHES TO BOTH SIDES, AND ADD ROWS TO MAKE IT LONGER. THE DESIGN IS CENTERED, SO ADD STITCHES EVENLY TO BOTH SIDES.

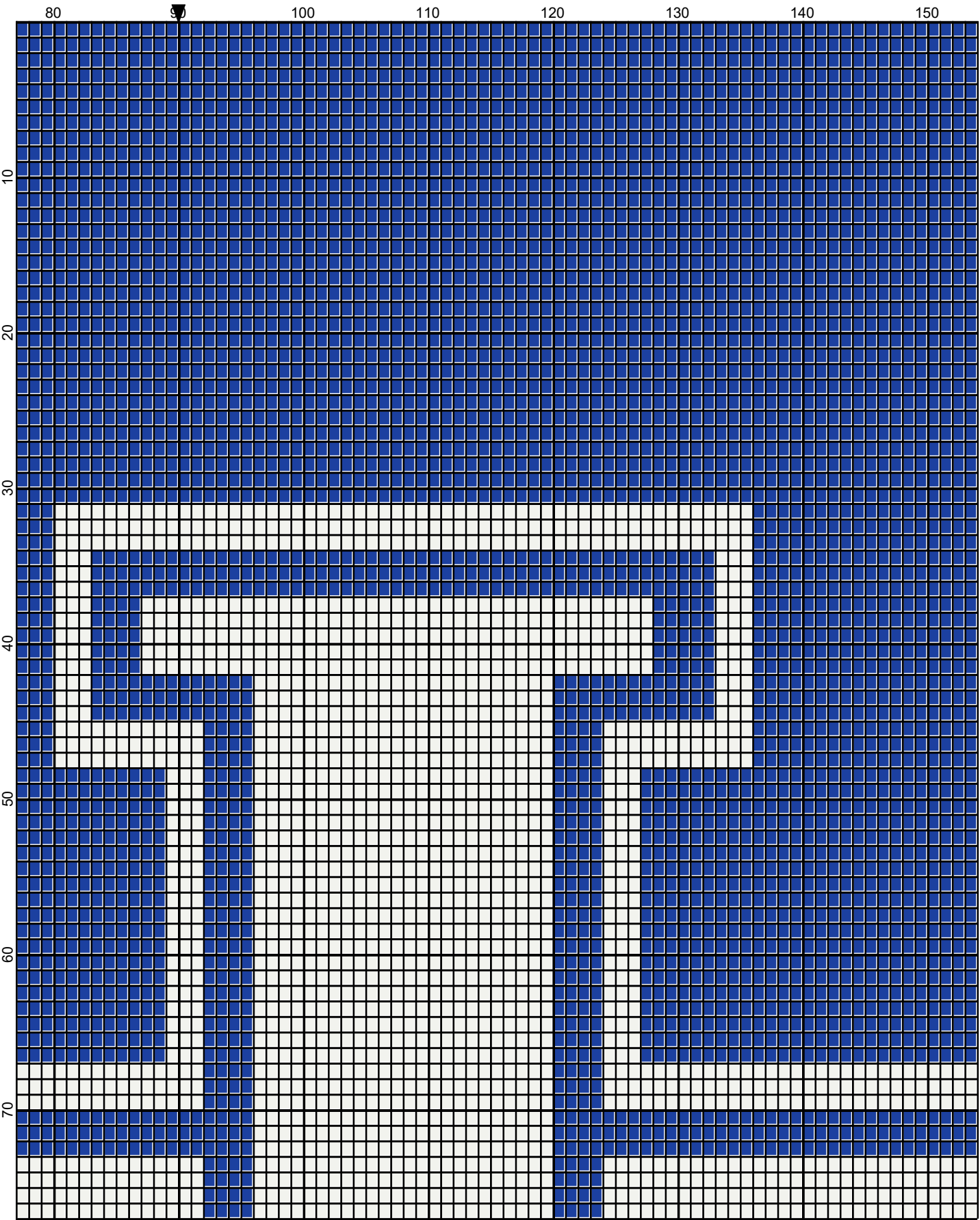
ESTIMATED YARN NEEDED:

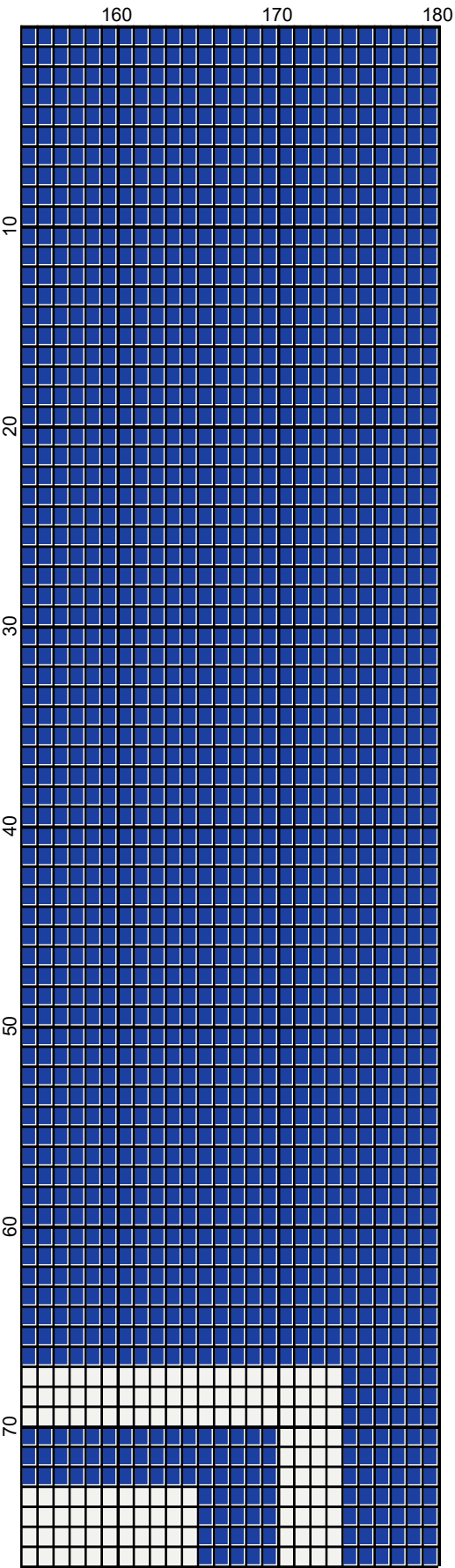
BLUE ;40 OUNCES/2000 YDS

WHITE: 12 OUNCES/578 YDS

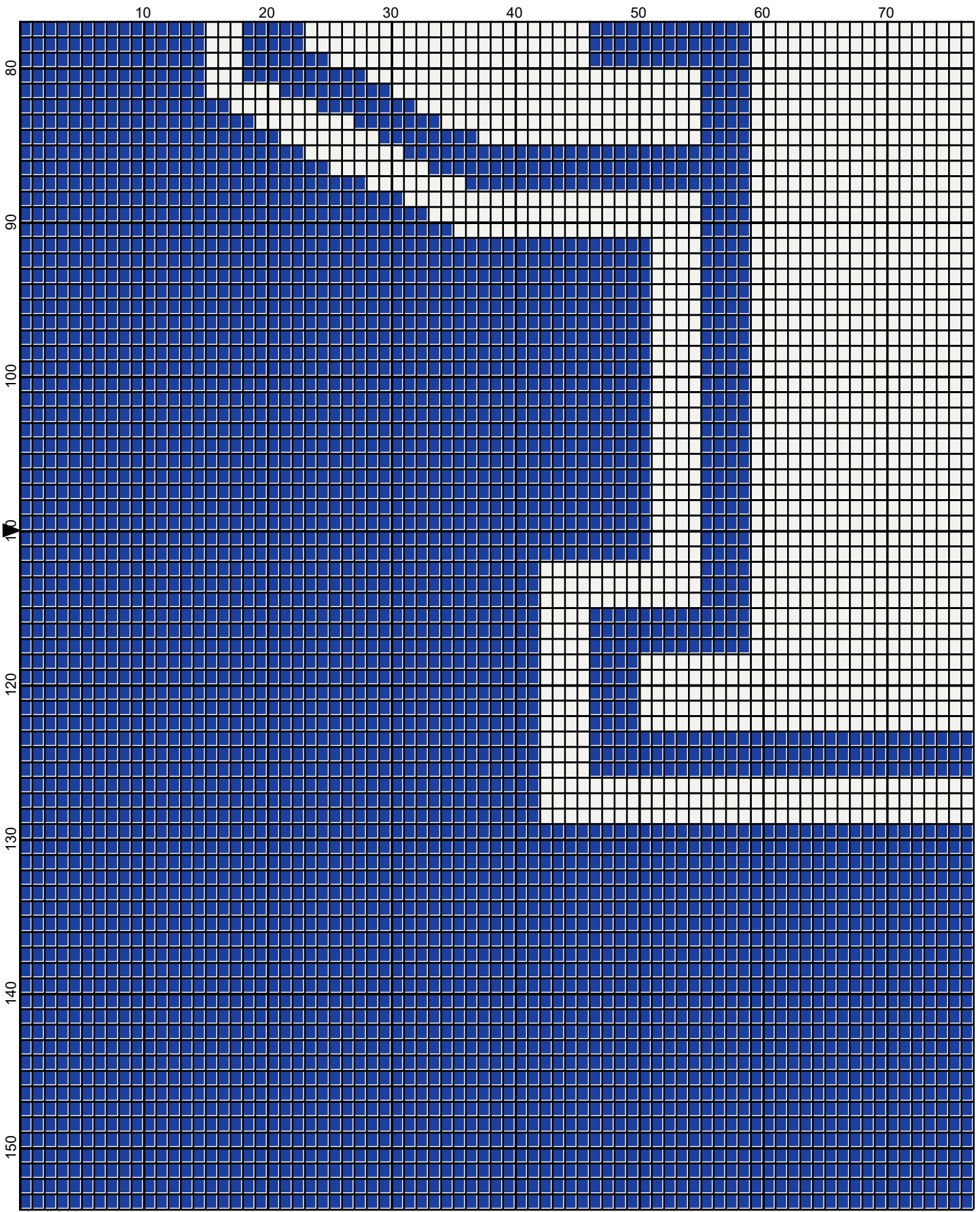


April 2025

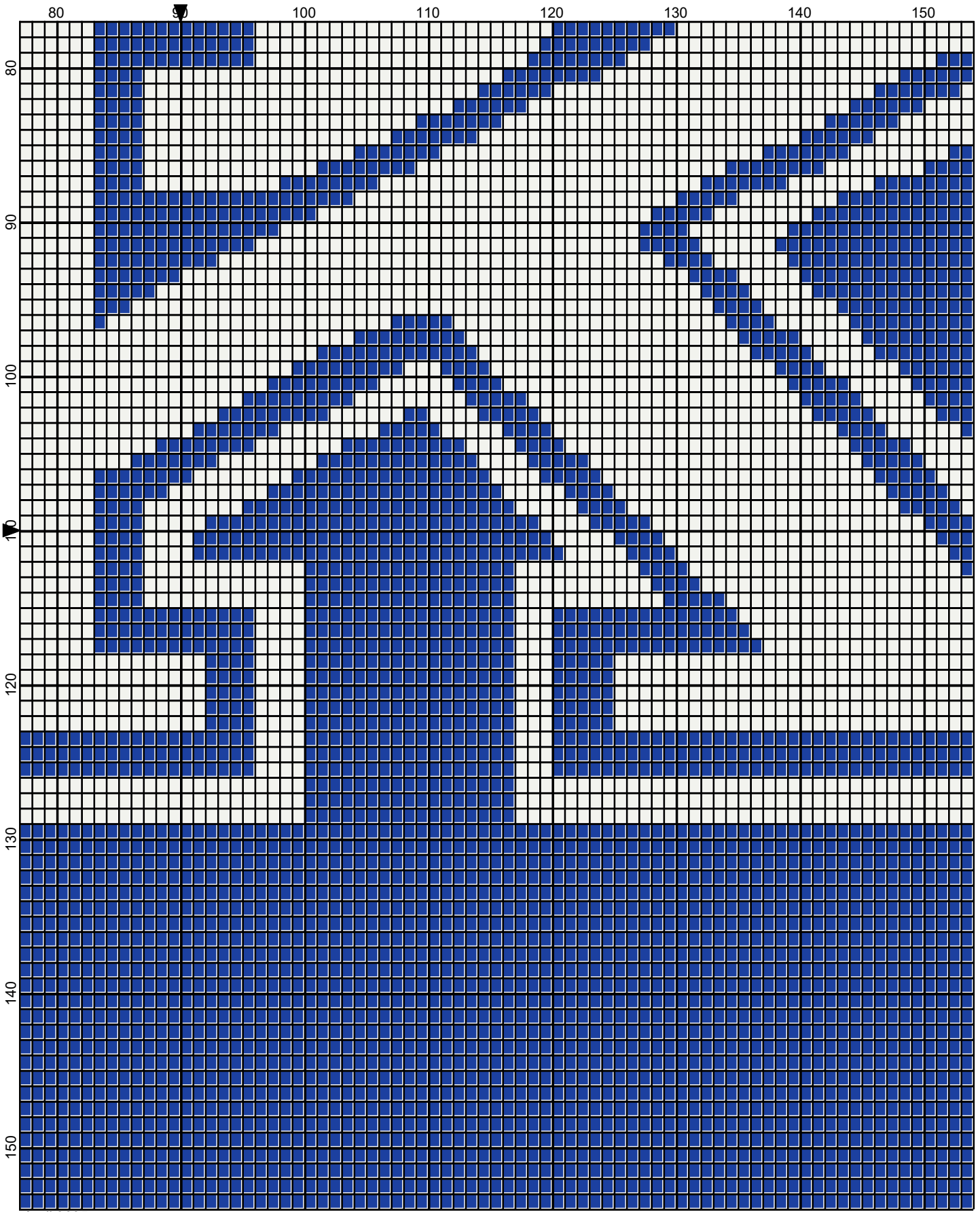




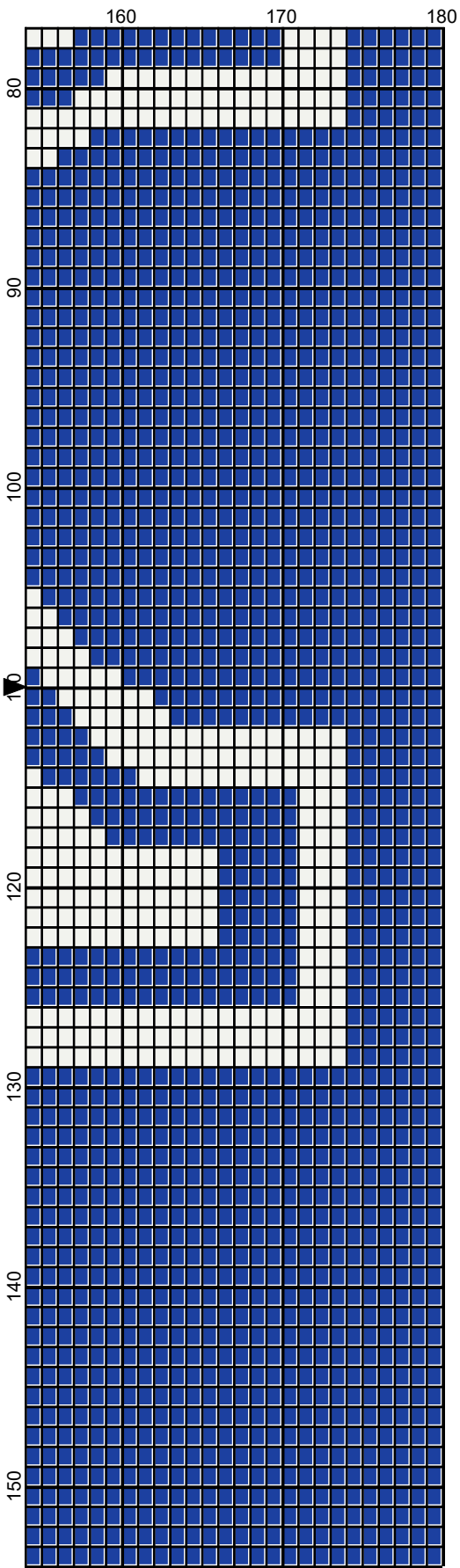
April 2025



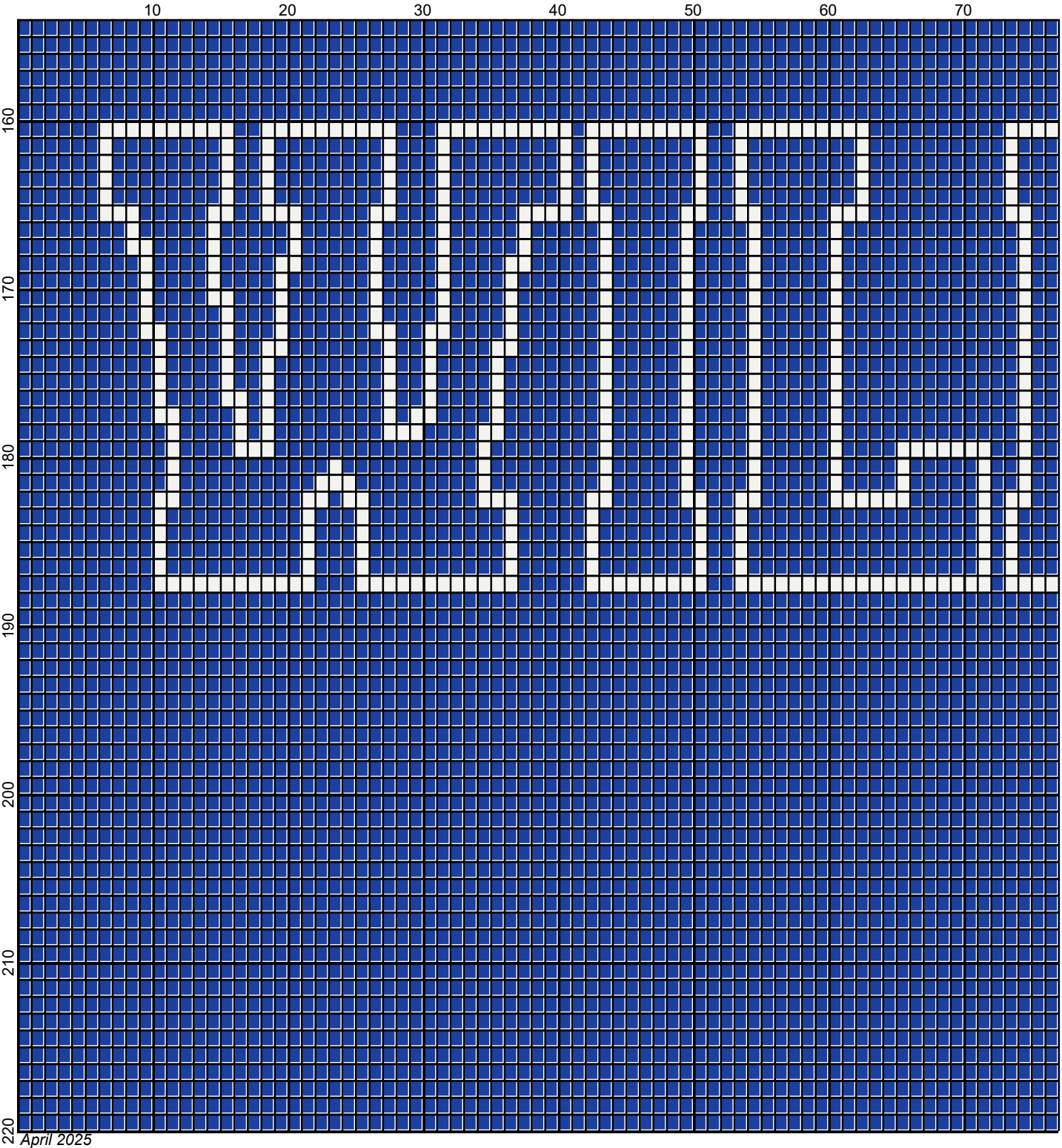
April 2025



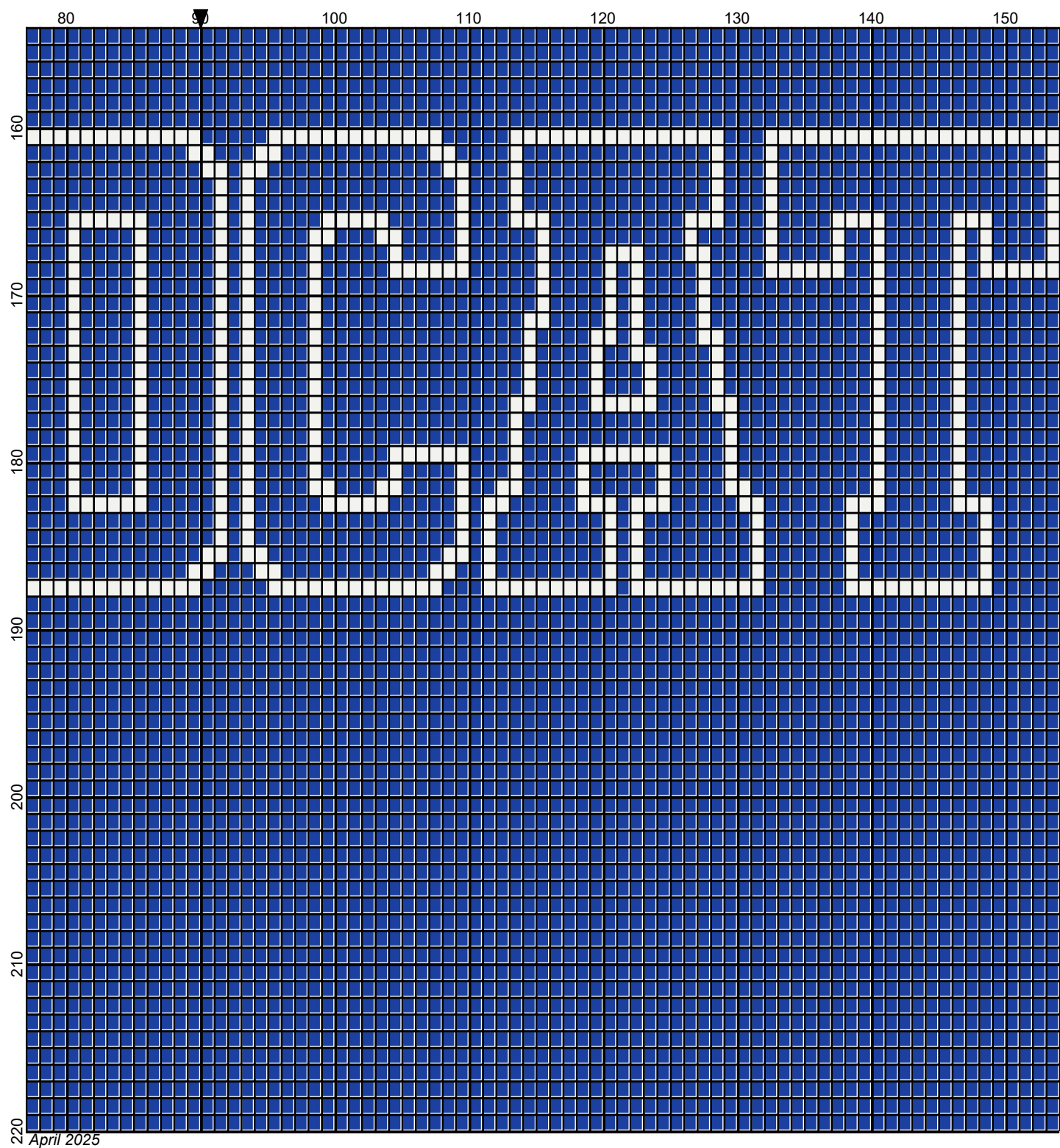
April 2025



April 2025



Legend:



■ RHS-886 □ RHS-316

