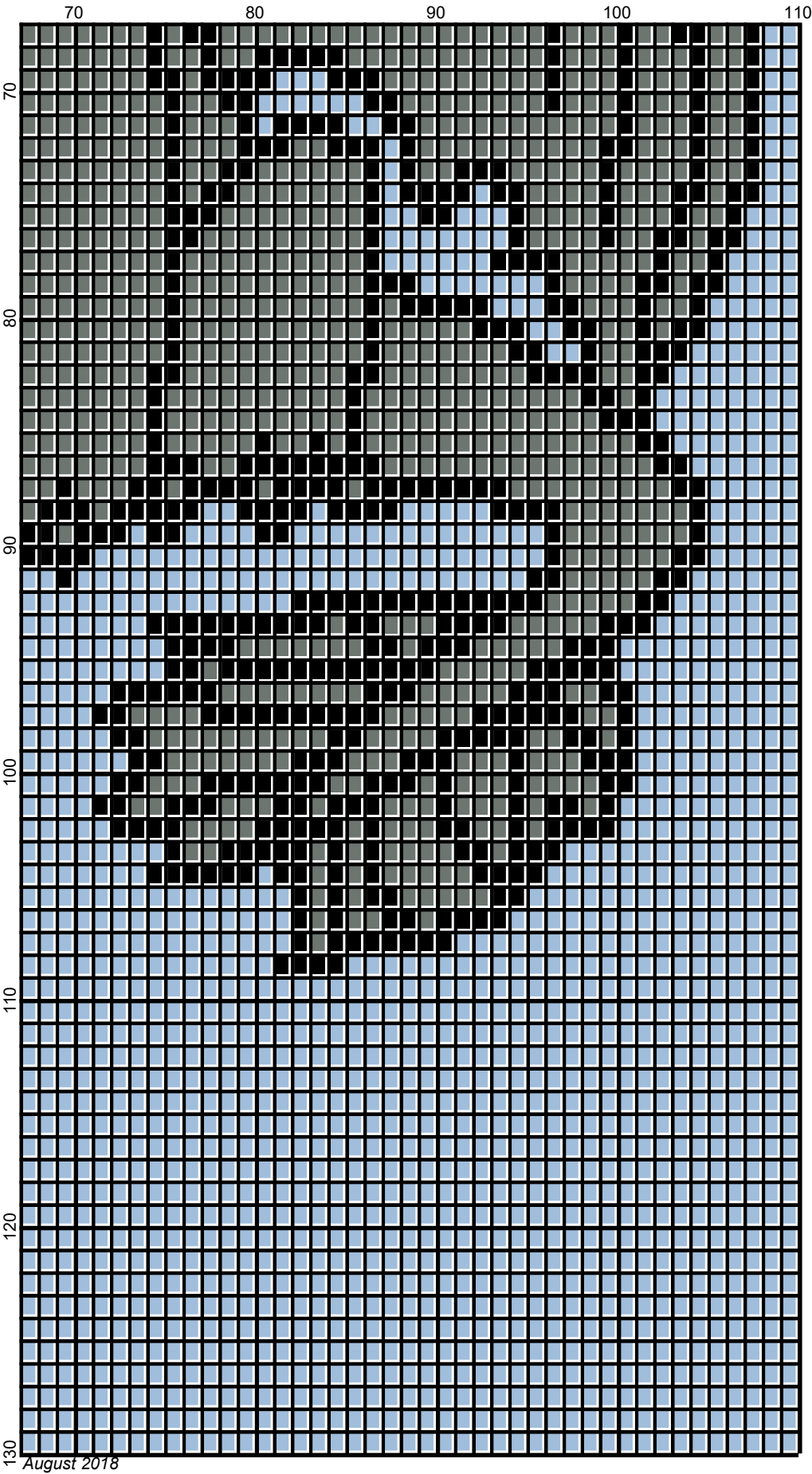


August 2018



August 2018

toothless_110x130

Author: Donna Hammell
Company: Donna's Crochet Shoppe
Copyright: August 2018
Website: www.donnascrochetshoppe.com
Grid Size: 110W x 130H
Design Area: 11.00" x 16.25" (110 x 130 stitches)

Legend:

 [2] RHS	312 Black	 [2] RHS	324 Bright Yellow
 [2] RHS	RH400 Gray Heather	 [2] RHS	381 Light Blue

Instructions for using the graph.

GAUGE= 5 STS = 1"
4 ROWS = 1"

I USED SIZE "H" AFGHAN HOOK,USE WHATEVER SIZE GIVES YOU THE CORRECT GAUGE. CAN BE DONE IN AFGHAN STITCH OR SINGLE CROCHET.

EACH SQUARE ON THE GRAPH REPRESENTS 1 STITCH. FOR SINGLE CROCHET READ THE CHART FROM RIGHT TO LEFT, AND THEN LEFT TO RIGHT. IF USING AFGHAN STITCH ALWAYS READ FROM THE RIGHT.

TO START: CHAIN ONE MORE STITCH THAN GRAPH.

ESTIMATED YARN NEEDED:

BLACK : 4 OUNCES
LIGHT BLUE:12 OUNCES
GRAY: 6 OUNCES
YELLOW:SMALL AMT