

Legend:

■ RHS-312 ■ RHS-390 ■ RHS-341 □ RHS-316

texas_tech_mascot

Author: Donna Hammell
Copyright: May 2025
Website: www.donnascrochetshoppe.com
Grid Size: 180W x 200H
Design Area: 18.00" x 25.00" (180 x 200 stitches)

Legend:

■ [2] RHS 312 Black ■ [2] RHS 390 Hot Red ■ [2] RHS 341 Light Gray ■ [2] RHS 316 Soft White

Instructions for using the graph.

GAUGE= 5 STS = 1"
4 ROWS = 1"

I USED SIZE "H" AFGHAN HOOK,USE WHATEVER SIZE GIVES YOU THE CORRECT GAUGE.
CAN BE DONE IN AFGHAN STITCH OR SINGLE CROCHET.

EACH SQUARE ON THE GRAPH REPRESENTS 1 STITCH. FOR SINGLE CROCHET READ THE
CHART FROM LEFT TO RIGHT. IF USING AFGHAN STITCH ALWAYS READ FROM THE RIGHT.

TO START: CHAIN ONE MORE STITCH THAN GRAPH.

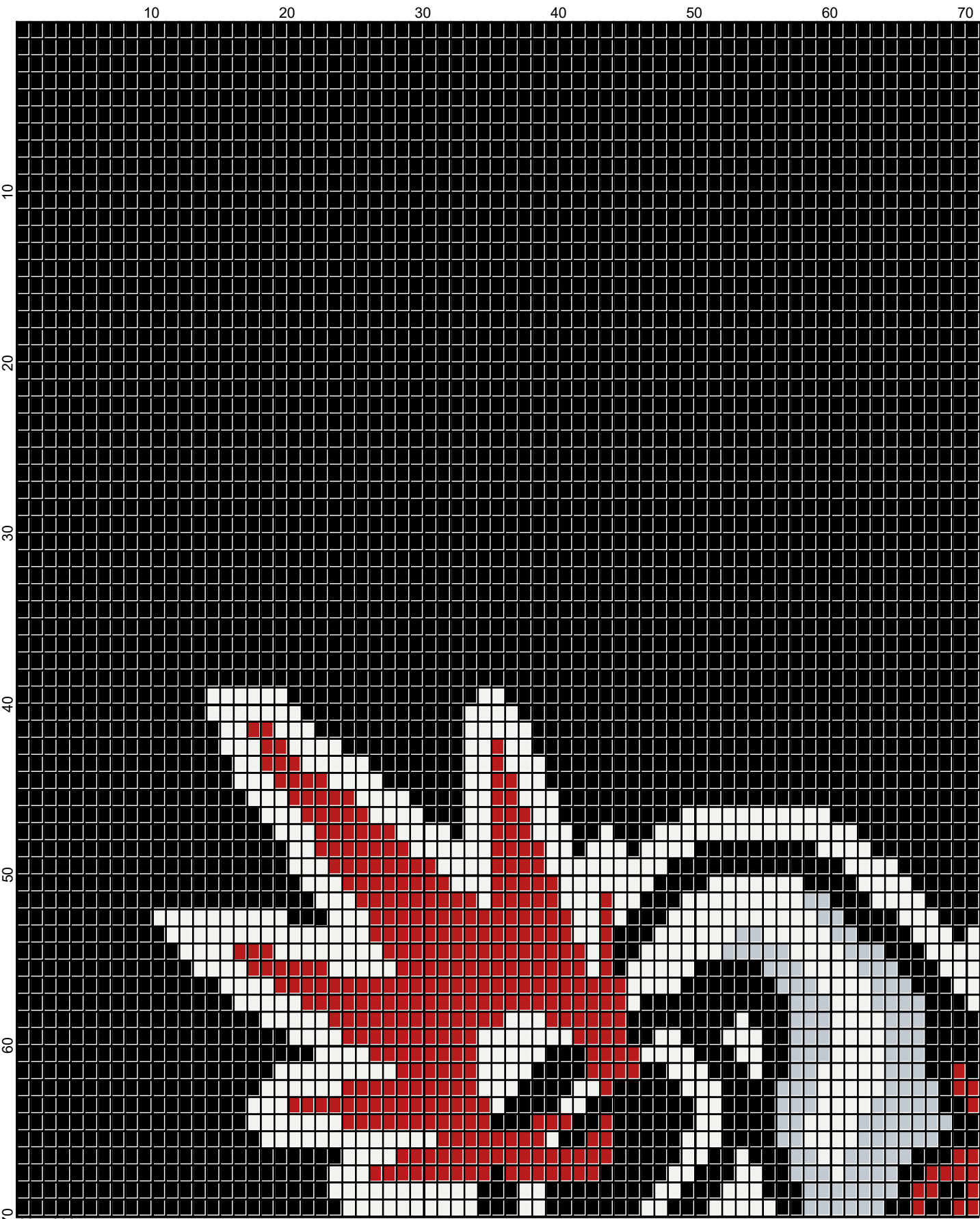
Yarn Approximation

BLACK: 36OUNCES/1805 YDS

WHITE 6OUNCES/280 YDS

HOT RED:5 OUNCES/220 YDS

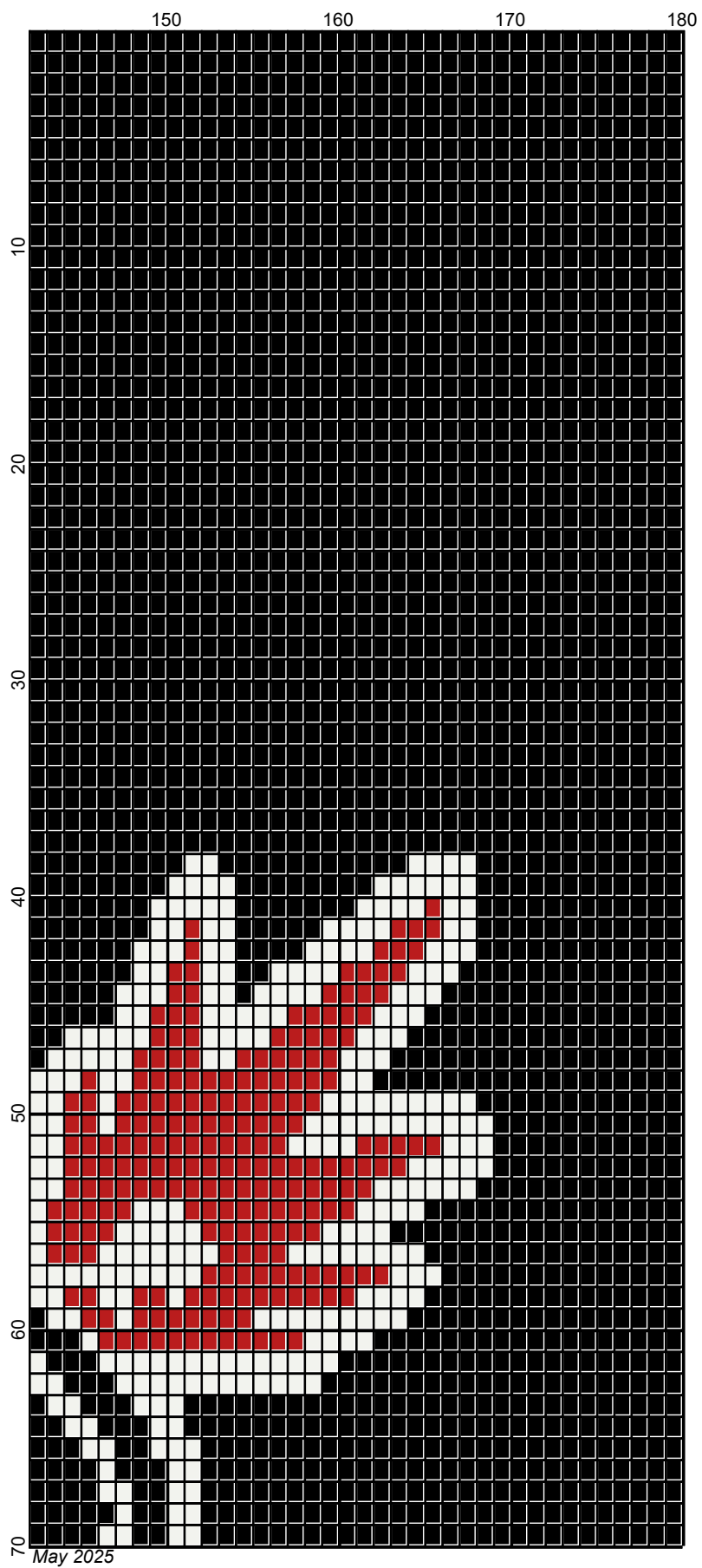
LT GRAY: 1 OUNCE/55 YDS

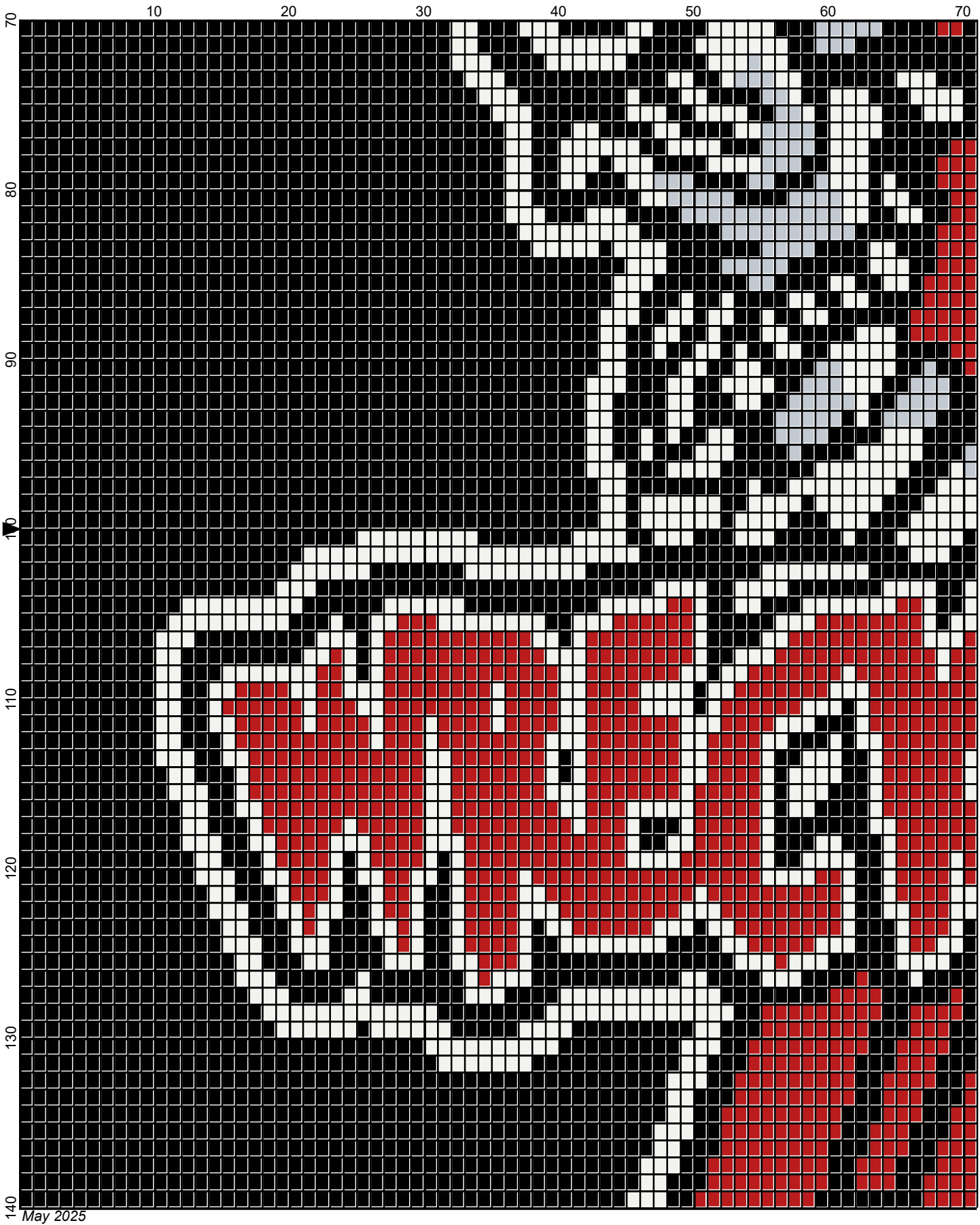


May 2025

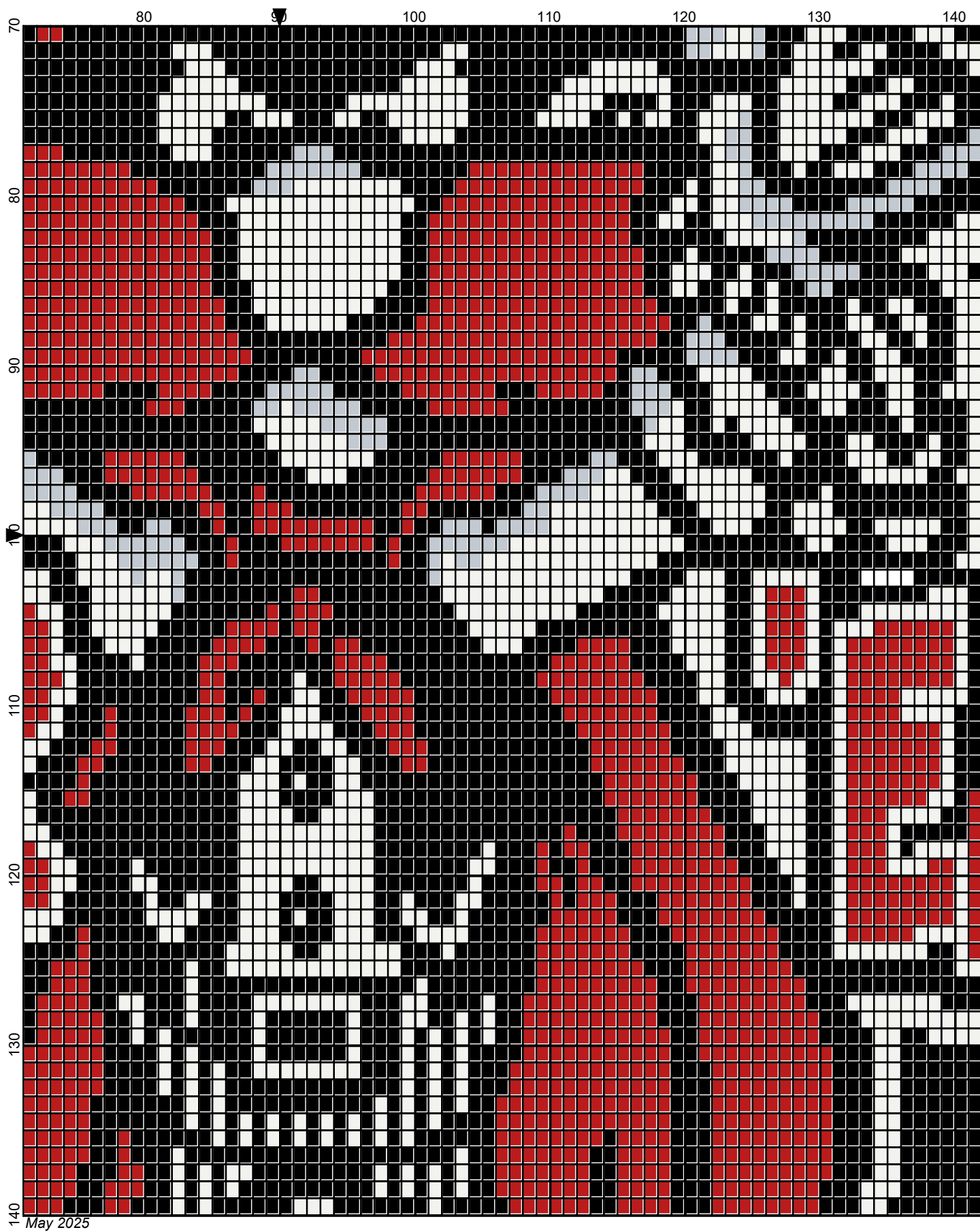


May 2025

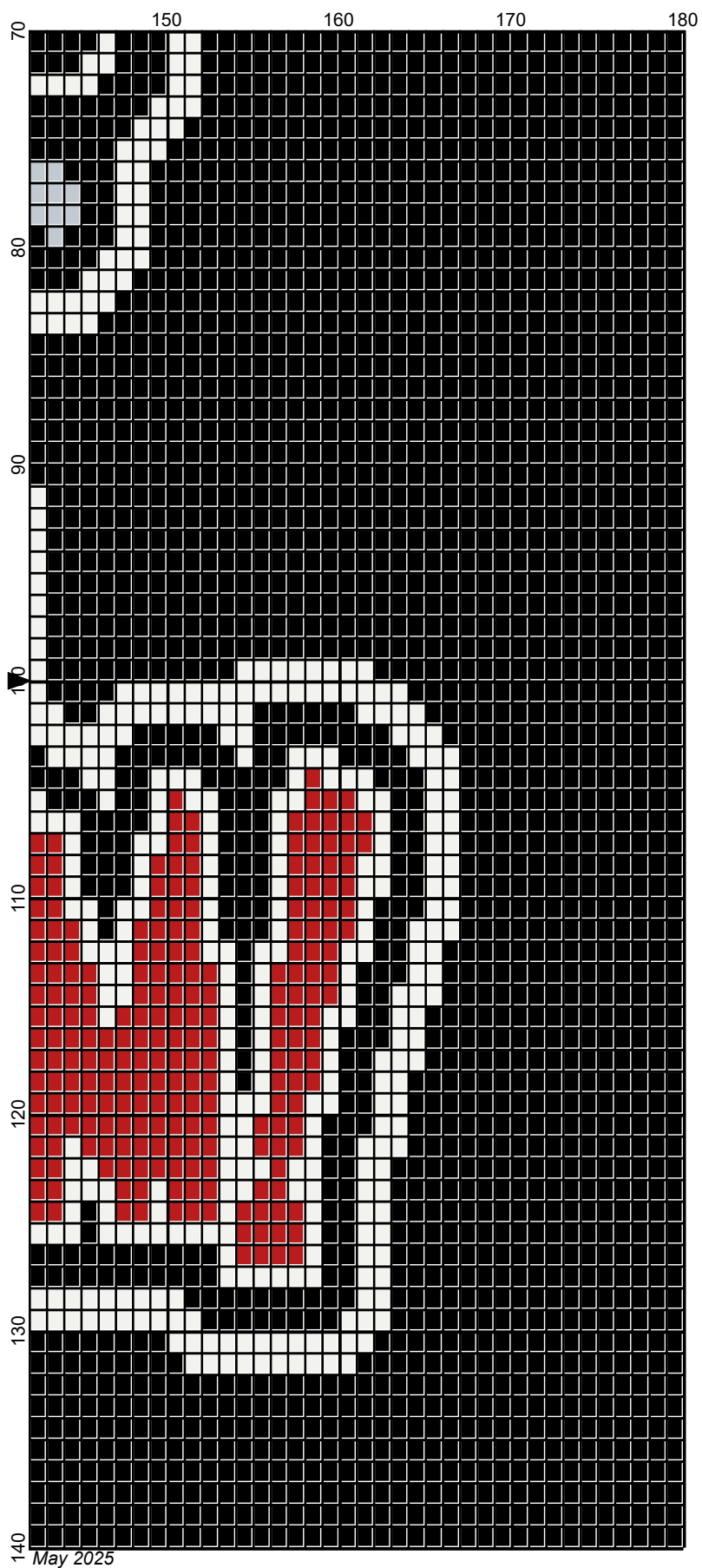




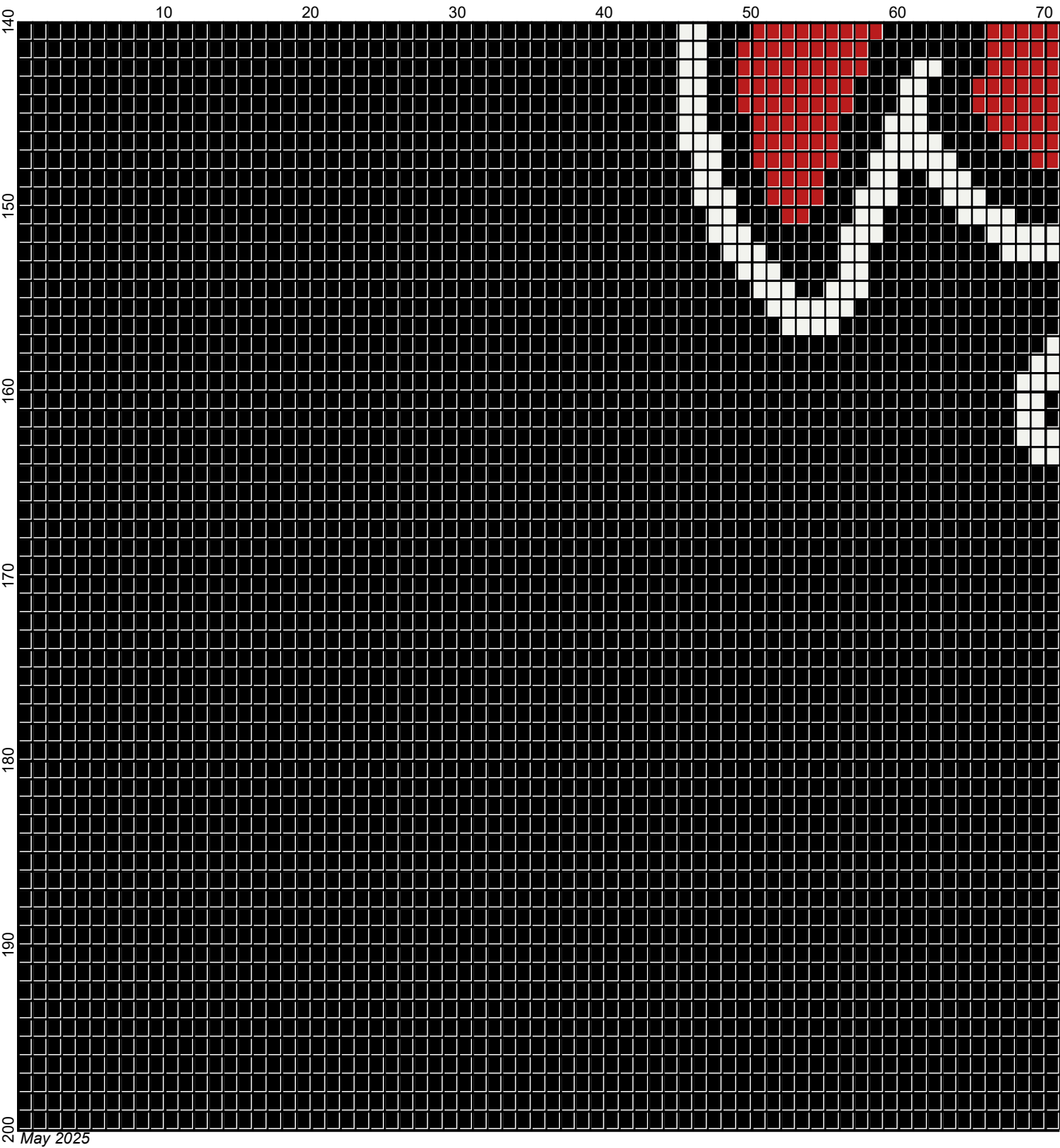
May 2025



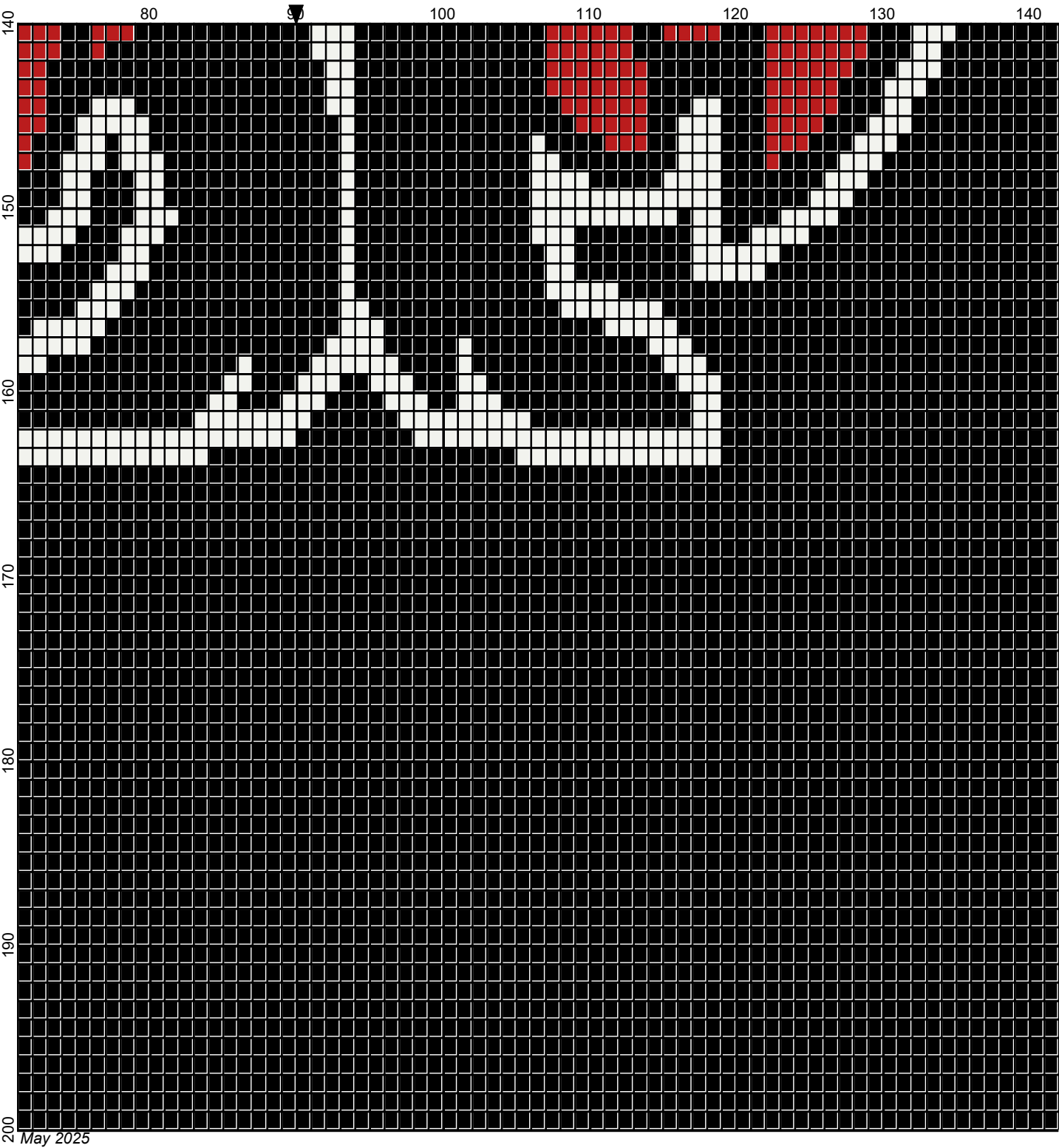
May 2025



May 2025



Legend:



■ RHS-312 ■ RHS-390 ■ RHS-341 □ RHS-316

