



Legend:
RHS-316 RHS-256

texas_longhorns_heart_160x160

Author: Donna Hammell
Copyright: May 2025
Website: www.donnascrochetshoppe.com
Grid Size: 160W x 160H
Design Area: 16.00" x 20.00" (160 x 160 stitches)

Legend:

 [2] RHS 316 Soft White  [2] RHS 256 Carrot

Instructions for using the graph.

GAUGE= 5 STS = 1"
4 ROWS = 1"

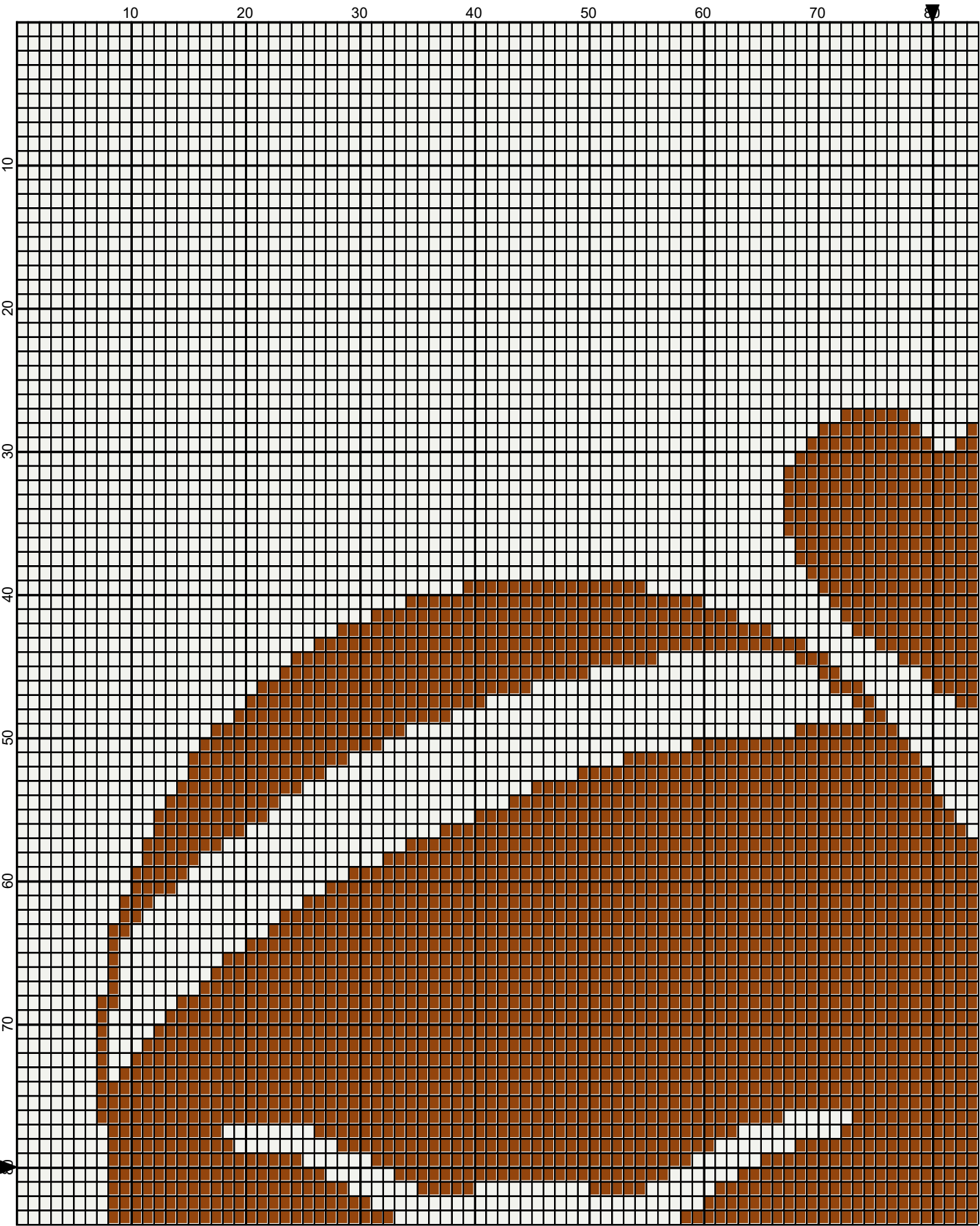
I USED SIZE "H" AFGHAN HOOK,USE WHATEVER SIZE GIVES YOU THE CORRECT GAUGE. CAN BE DONE IN AFGHAN STITCH OR SINGLE CROCHET.

EACH SQUARE ON THE GRAPH REPRESENTS 1 STITCH. FOR SINGLE CROCHET READ THE CHART FROM RIGHT TO LEFT, AND THEN LEFT TO RIGHT. IF USING AFGHAN STITCH ALWAYS READ FROM THE RIGHT.

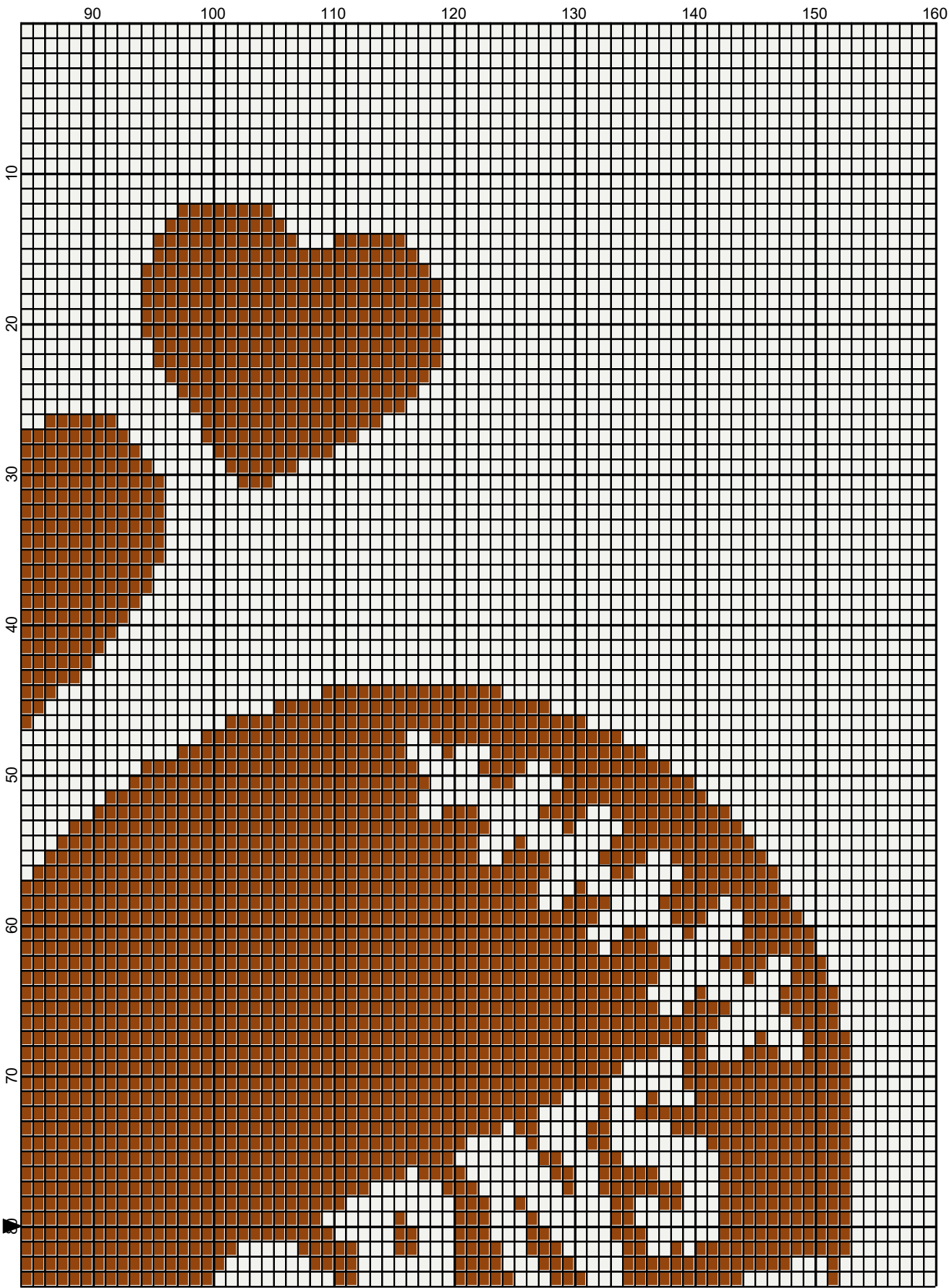
TO START: CHAIN ONE MORE STITCH THAN GRAPH.

IF YOU NEED TO MAKE THE PATTERN LARGER ADD STITCHES EVENLY TO BOTH SIDES OR ADD ROWS EVENLY ABOVE AND BELOW.

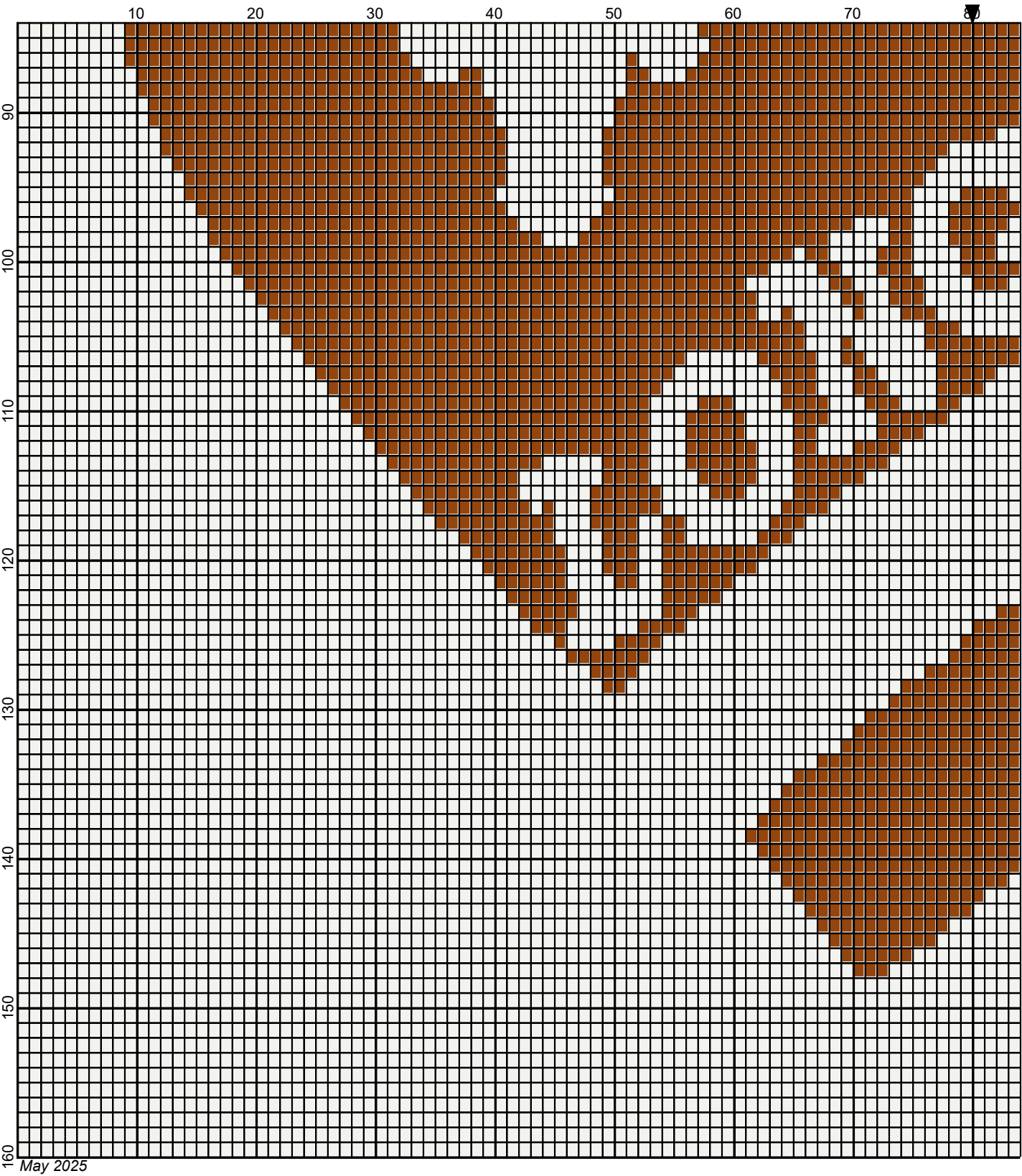
ESTIMATED YARN NEEDED:
CARROT ; 12 OUNCES/552 YDS
WHITE: 22 OUNCES/1118 YDS



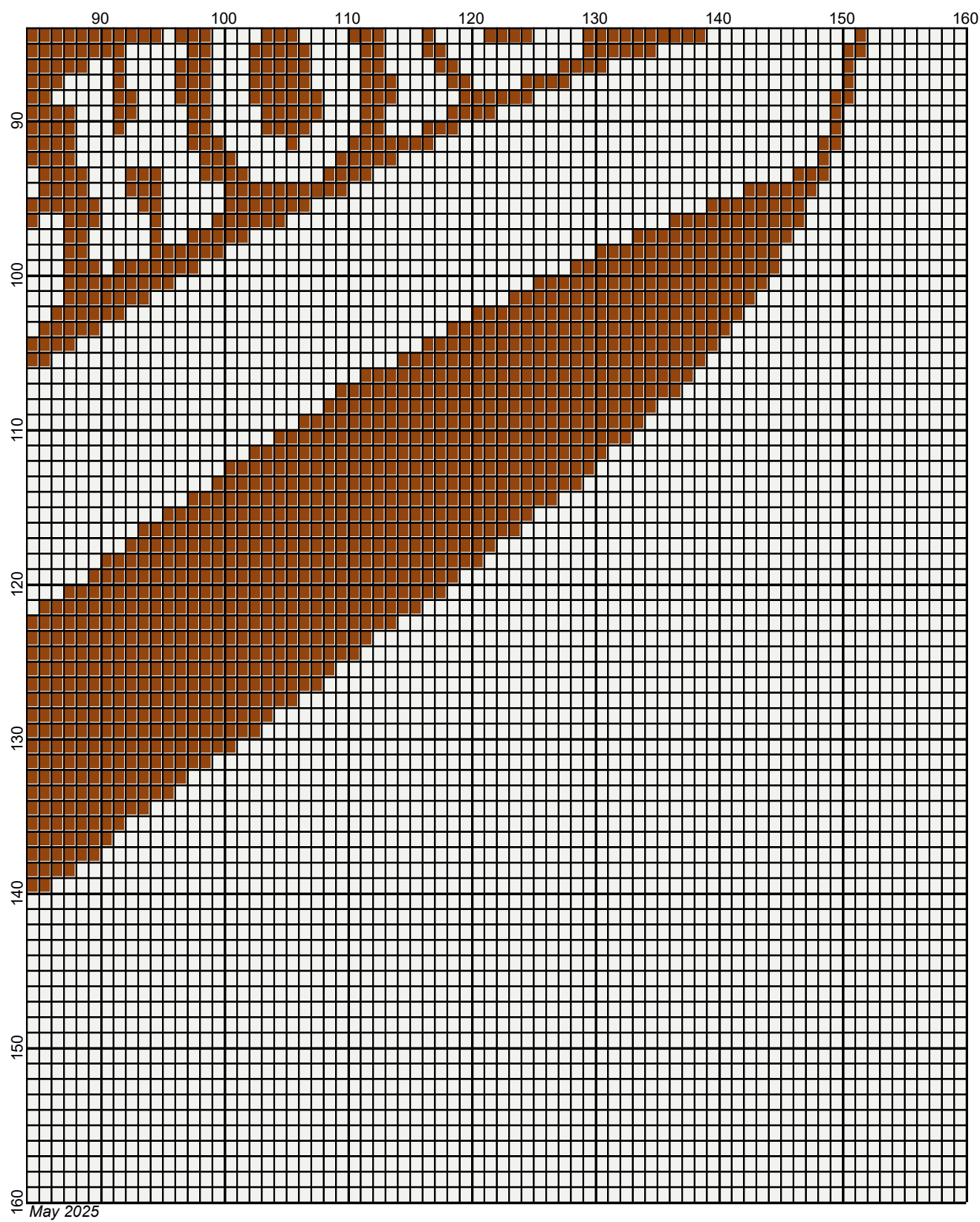
May 2025



May 2025



Legend:



□ RHS-316 ■ RHS-256