

May 2025




Legend:  
RHS-341   RHS-316   RHS-319

# sooners\_bandana\_175 x175

---

**Author:** Donna Hammell  
**Copyright:** May 2025  
**Website:** [www.donnascrochetshoppe.com](http://www.donnascrochetshoppe.com)  
**Grid Size:** 175W x 175H  
**Design Area:** 17.50" x 21.88" (175 x 175 stitches)

## Legend:

 [2] RHS 341 Light Gray     [2] RHS 316 Soft White     [2] RHS 319 Cherry Red

Instructions for using the graph.

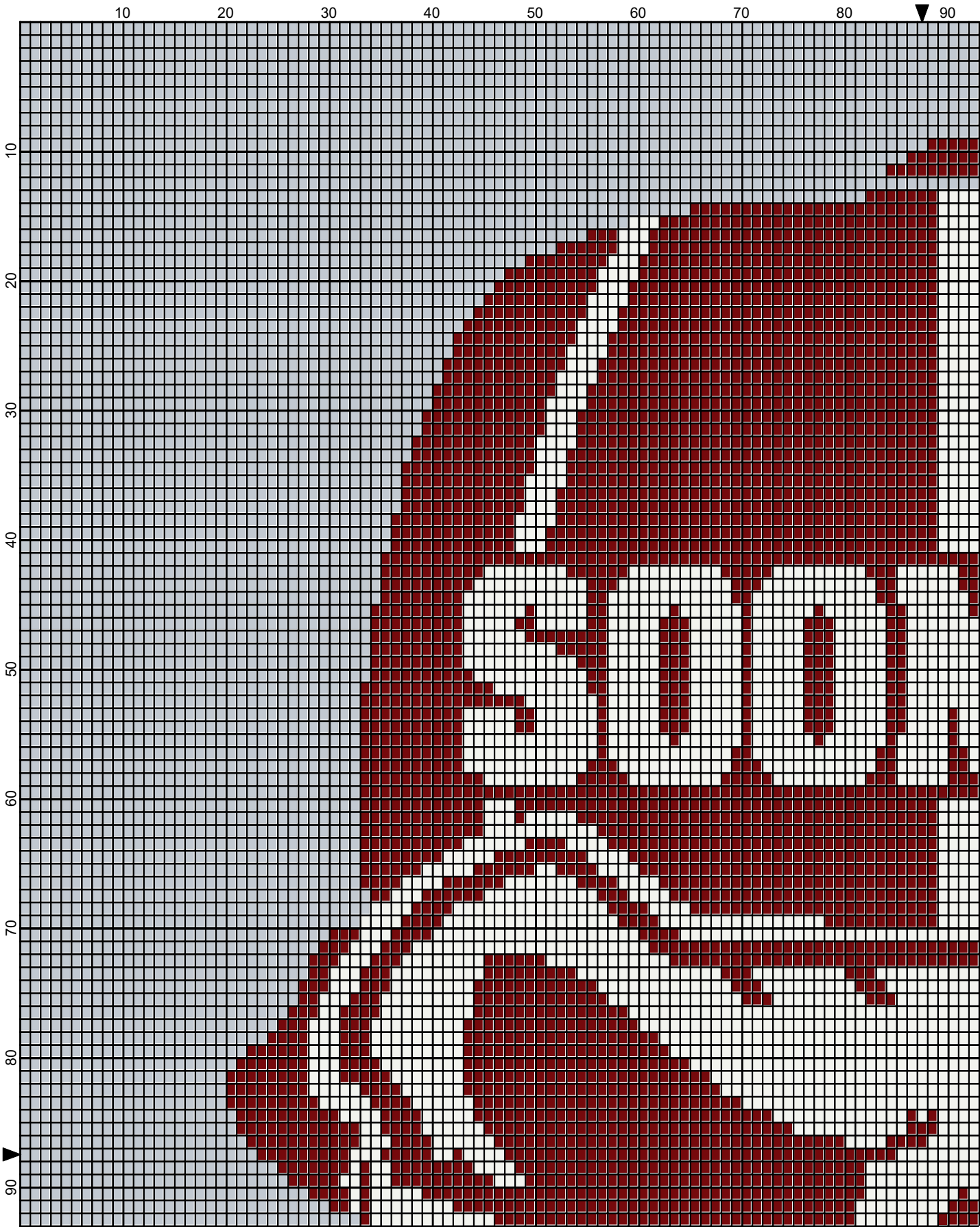
GAUGE= 5 STS = 1"  
4 ROWS = 1"

I USED SIZE "H" AFGHAN HOOK,USE WHATEVER SIZE GIVES YOU THE CORRECT GAUGE. CAN BE DONE IN AFGHAN STITCH OR SINGLE CROCHET.

EACH SQUARE ON THE GRAPH REPRESENTS 1 STITCH. FOR SINGLE CROCHET READ THE CHART FROM RIGHT TO LEFT, AND THEN LEFT TO RIGHT. IF USING AFGHAN STITCH ALWAYS READ FROM THE RIGHT.

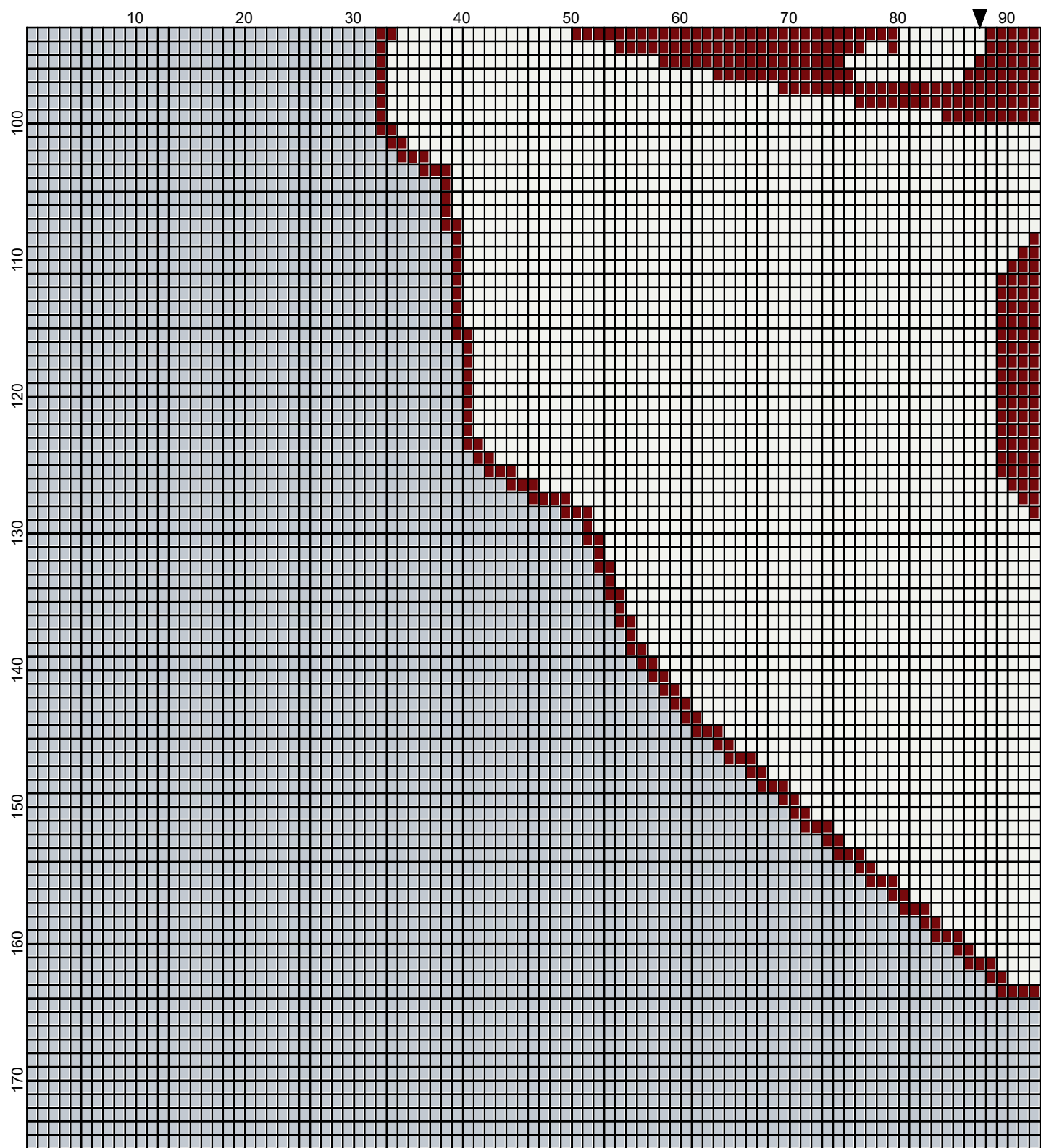
TO START: CHAIN ONE MORE STITCH THAN GRAPH

ESTIMATED YARN NEEDED:  
CHERRY RED: 10 OUNCES/458 YDS  
LT GRAY: 21 OUNCES/1050 YDS  
WHITE: 10 OUNCES/490 YDS



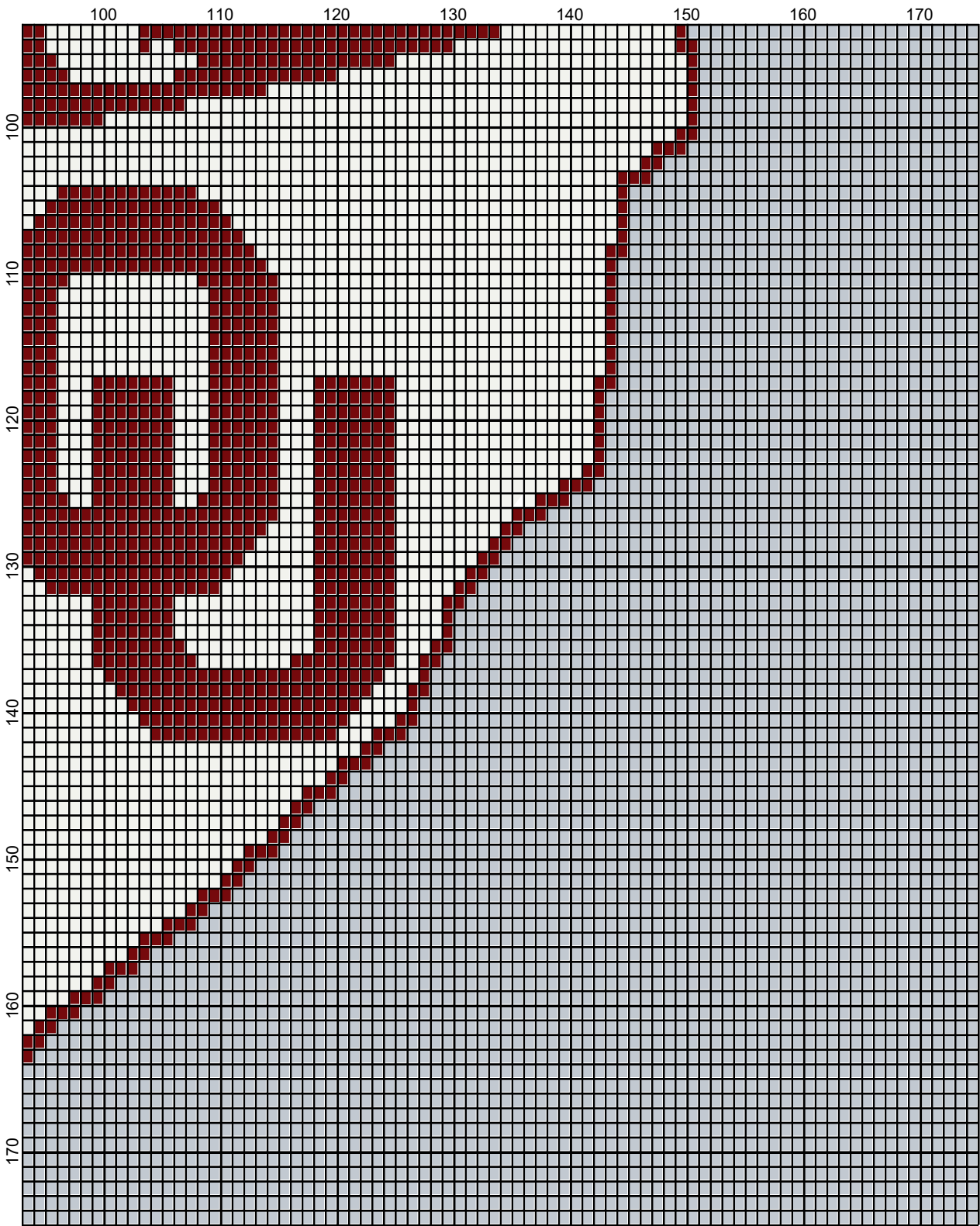
May 2025





May 2025

Legend:



May 2025

RHS-341   RHS-316   RHS-319