

July 2022

Legend:

■ RHS-312 ■ RHS-341 □ RHS-311 ■ RHS-334

skull_120x120

Author: Donna Hammell
Copyright: July 2022
Website: www.donnascrochetshoppe.com
Grid Size: 120W x 120H
Design Area: 12.00" x 15.00" (120 x 120 stitches)

Legend:

■ [2] RHS 312 Black ■ [2] RHS 341 Light Gray □ [2] RHS 311 WHITE ■ [2] RHS 334 Buff

Instructions for using the graph.

GAUGE= 5 STS = 1"
4 ROWS = 1"

I USED SIZE "H" AFGHAN HOOK, USE WHATEVER SIZE GIVES YOU THE CORRECT GAUGE. CAN BE DONE IN AFGHAN STITCH OR SINGLE CROCHET.

EACH SQUARE ON THE GRAPH REPRESENTS 1 STITCH. FOR SINGLE CROCHET READ THE CHART FROM RIGHT TO LEFT, AND THEN LEFT TO RIGHT. IF USING AFGHAN STITCH ALWAYS READ FROM THE RIGHT.

TO START: CHAIN ONE MORE STITCH THAN GRAPH.

IF YOU NEED TO ADD STITCHES TO MAKE THE PIECE WIDER, OR ADD ROWS TO MAKE IT LONGER. THE DESIGN IS CENTERED, SO ADD STITCHES EVENLY TO BOTH SIDES.

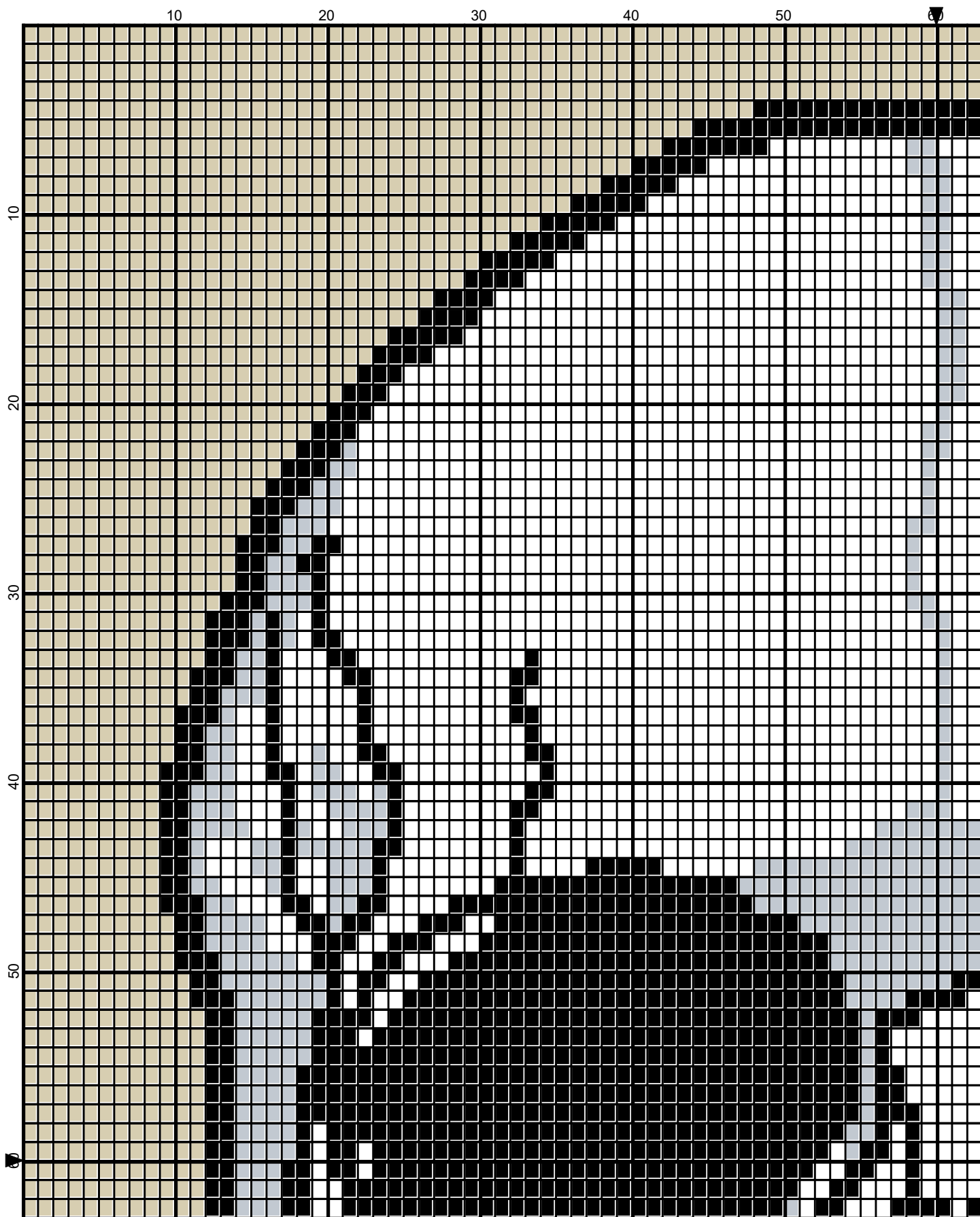
ESTIMATED YARN NEEDED:

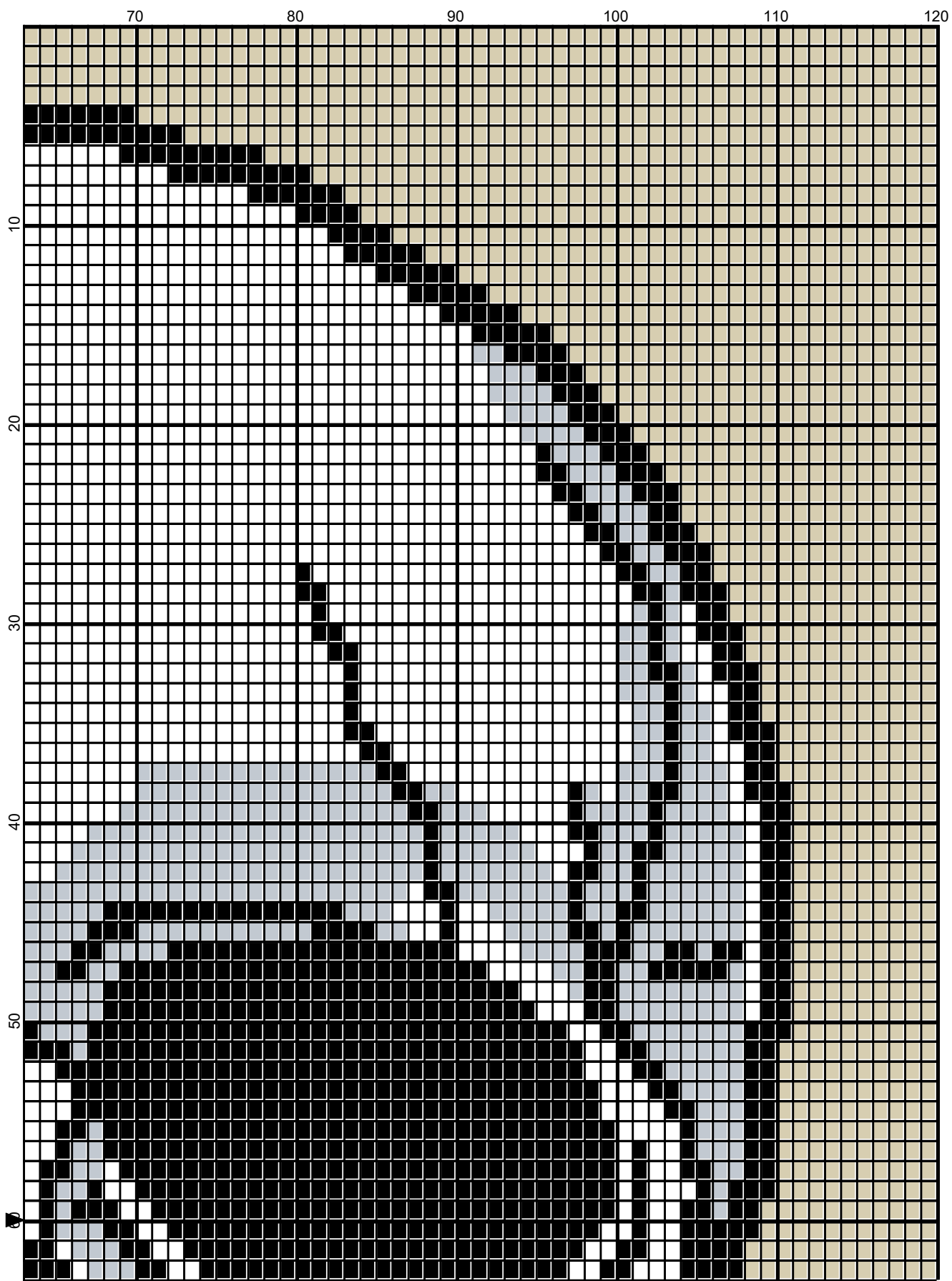
BLACK ; 4 OUNCES/205 yds

WHITE: 6 OUNCES/270 YDS

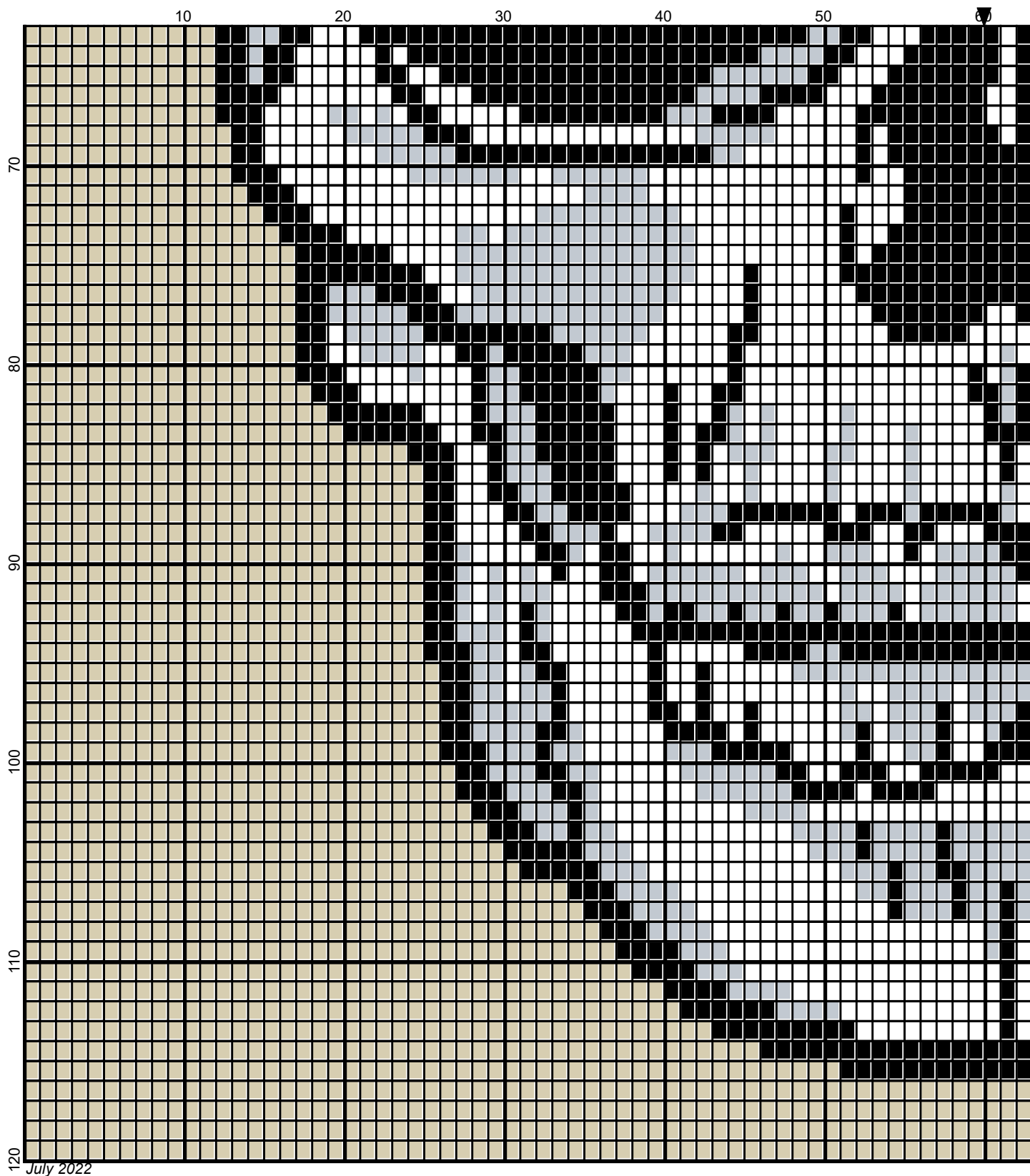
LT GRAY: 3 OUNCES/110 YDS

BUFF/BACKGROUND: 8 OUNCES/360 YDS

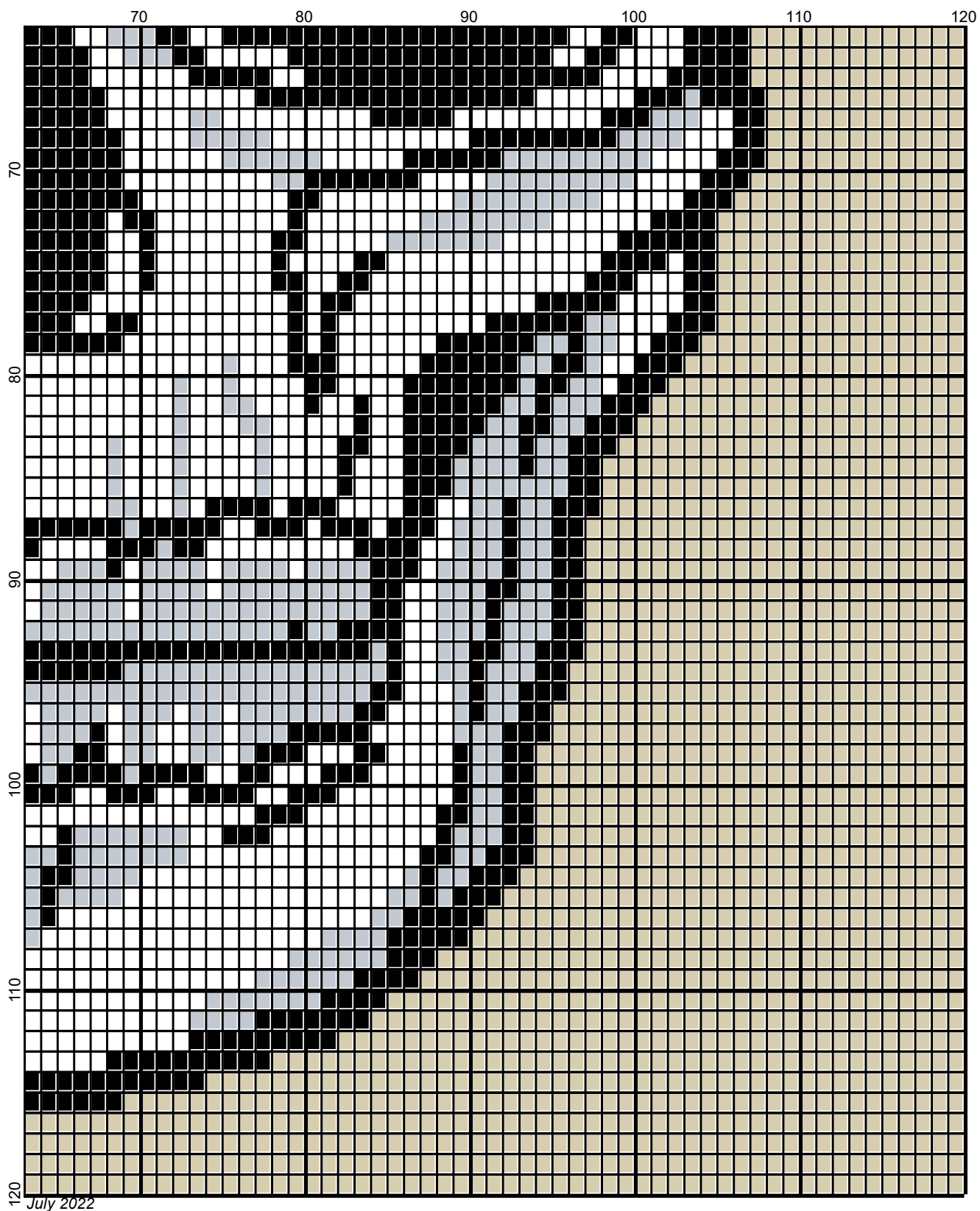




July 2022



Legend:



■ RHS-312 ■ RHS-341 □ RHS-311 ■ RHS-334