

February 2023

Legend:

- RHS-312
- RHS-886
- RHS-3950
- RHS-341
- RHS-311

ps5_controller

Author: Donna Hammell
Copyright: February 2023
Website: www.donnascrochetshoppe.com
Grid Size: 100W x 100H
Design Area: 10.00" x 12.50" (100 x 100 stitches)

Legend:

■ [2] RHS 312 Black ■ [2] RHS 3950 Charcoal □ [2] RHS 311 WHITE
■ [2] RHS 886 Blue ■ [2] RHS 341 Light Gray

Instructions for using the graph.

GAUGE= 5 STS = 1"
4 ROWS = 1"

I USED SIZE "H" AFGHAN HOOK, USE WHATEVER SIZE GIVES YOU THE CORRECT GAUGE. CAN BE DONE IN AFGHAN STITCH OR SINGLE CROCHET.

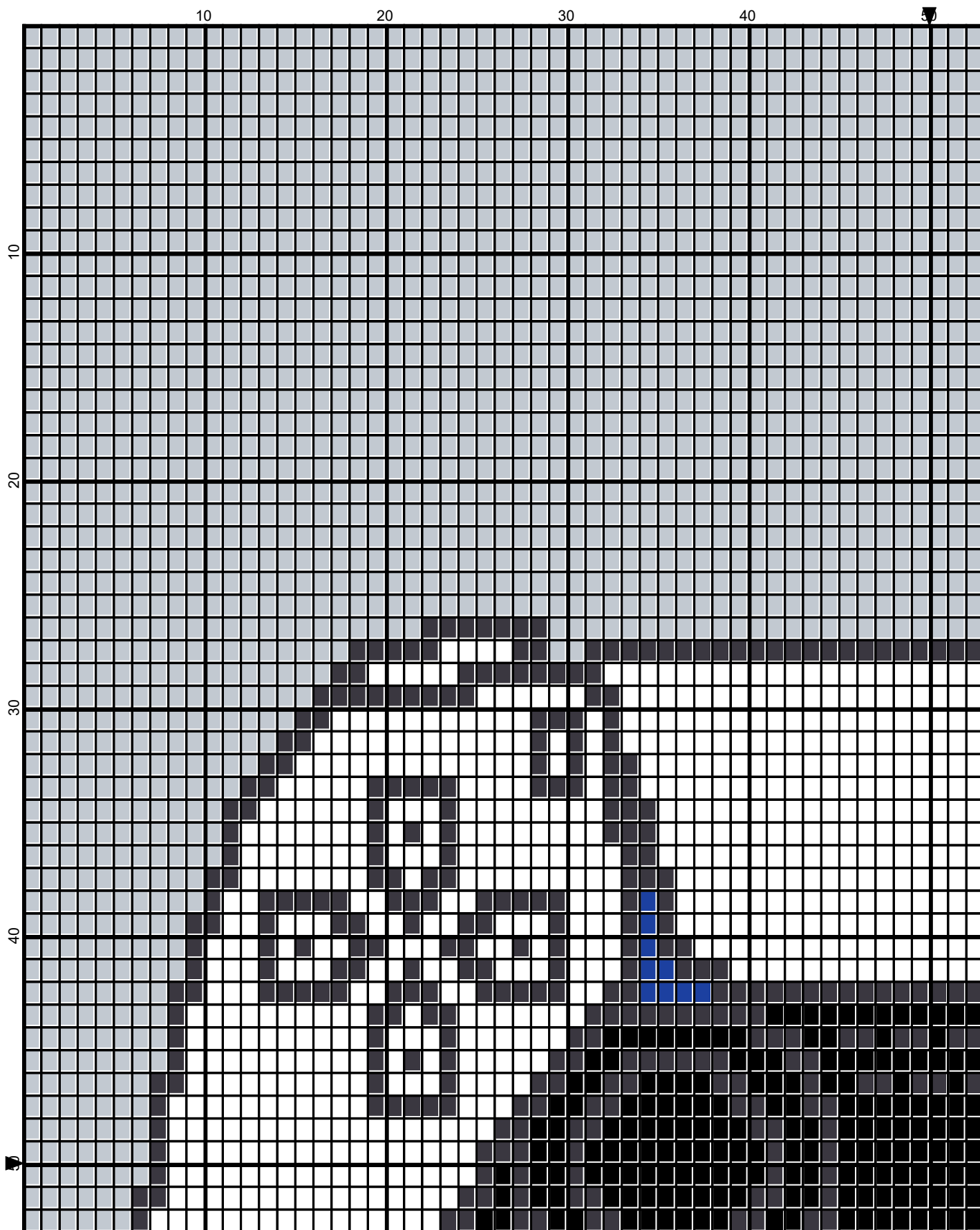
EACH SQUARE ON THE GRAPH REPRESENTS 1 STITCH. FOR SINGLE CROCHET READ THE CHART FROM RIGHT TO LEFT, AND THEN LEFT TO RIGHT. IF USING AFGHAN STITCH ALWAYS READ FROM THE RIGHT.

TO START: CHAIN ONE MORE STITCH THAN GRAPH.

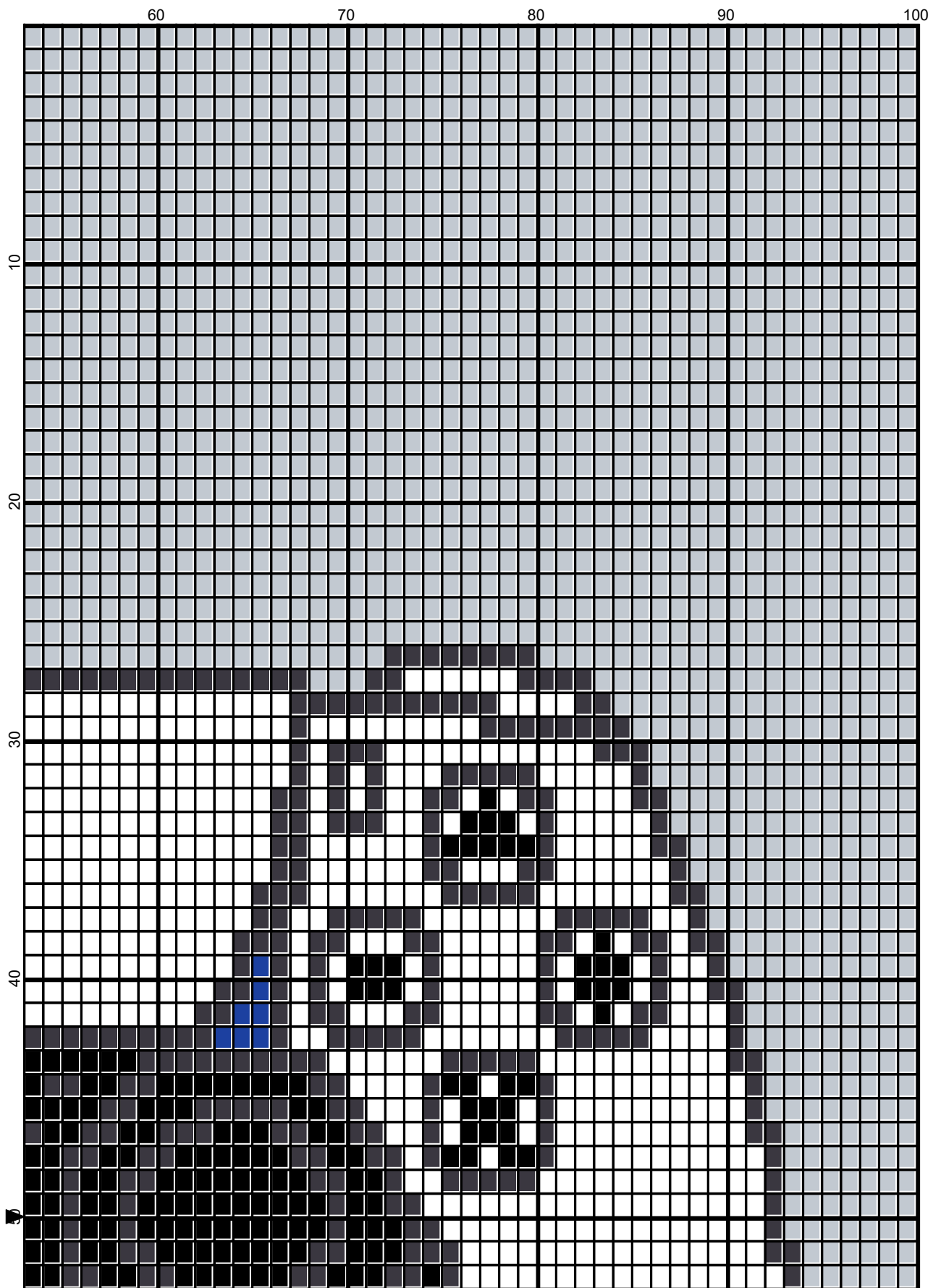
IF YOU WILL NEED TO MAKE THE PIECE WIDER ADD STITCHES EVENLY TO BOTH SIDES, AND ADD ROWS TO MAKE IT LONGER. THE DESIGN IS CENTERED, SO ADD STITCHES EVENLY TO BOTH SIDES.

ESTIMATED YARN NEEDED:

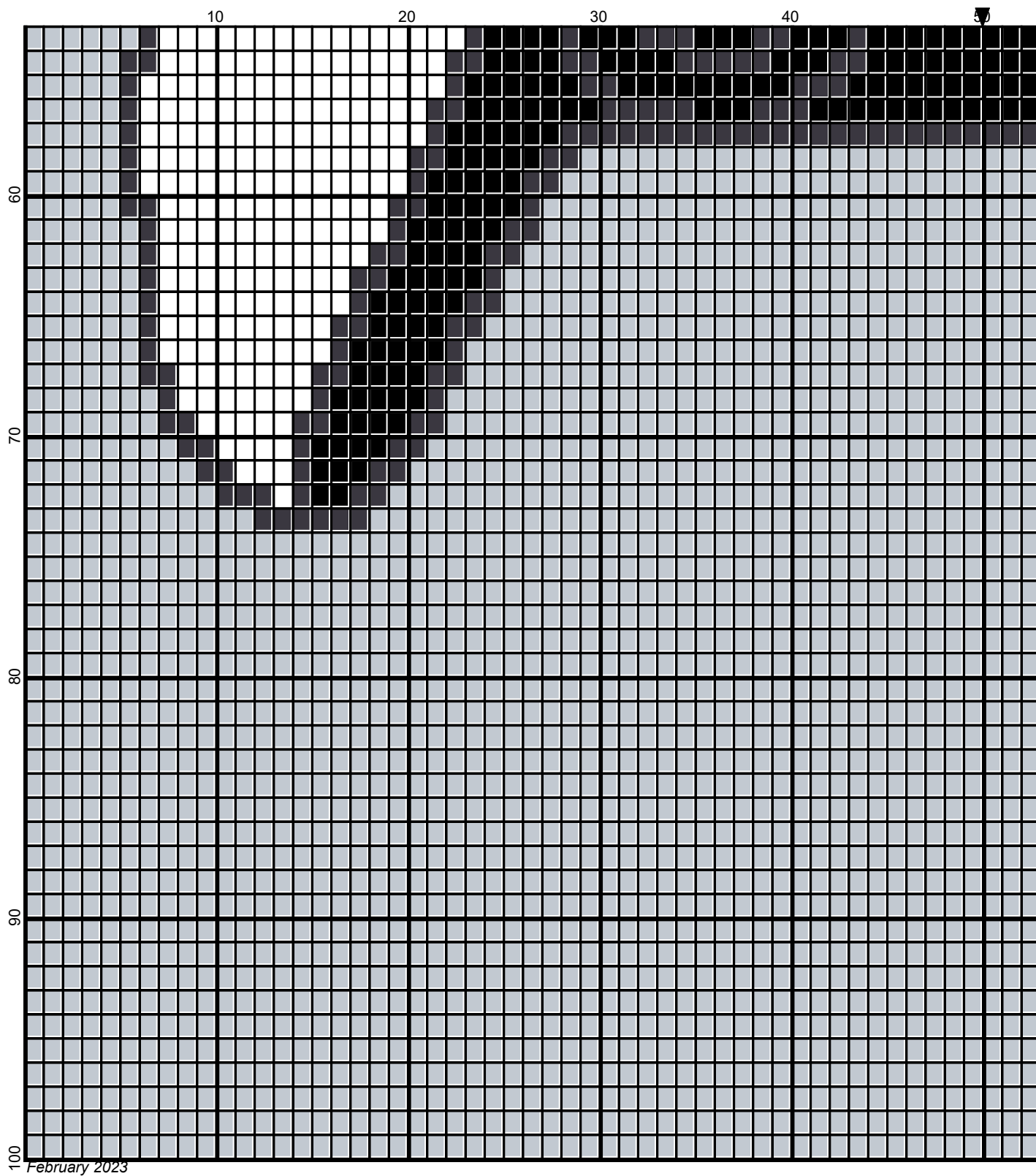
BLACK: 41 YDS
CHARCOAL: 60 YDS
WHITE: 100 YDS
LT GRAY: 455 YDS
BLUE: 2 YDS



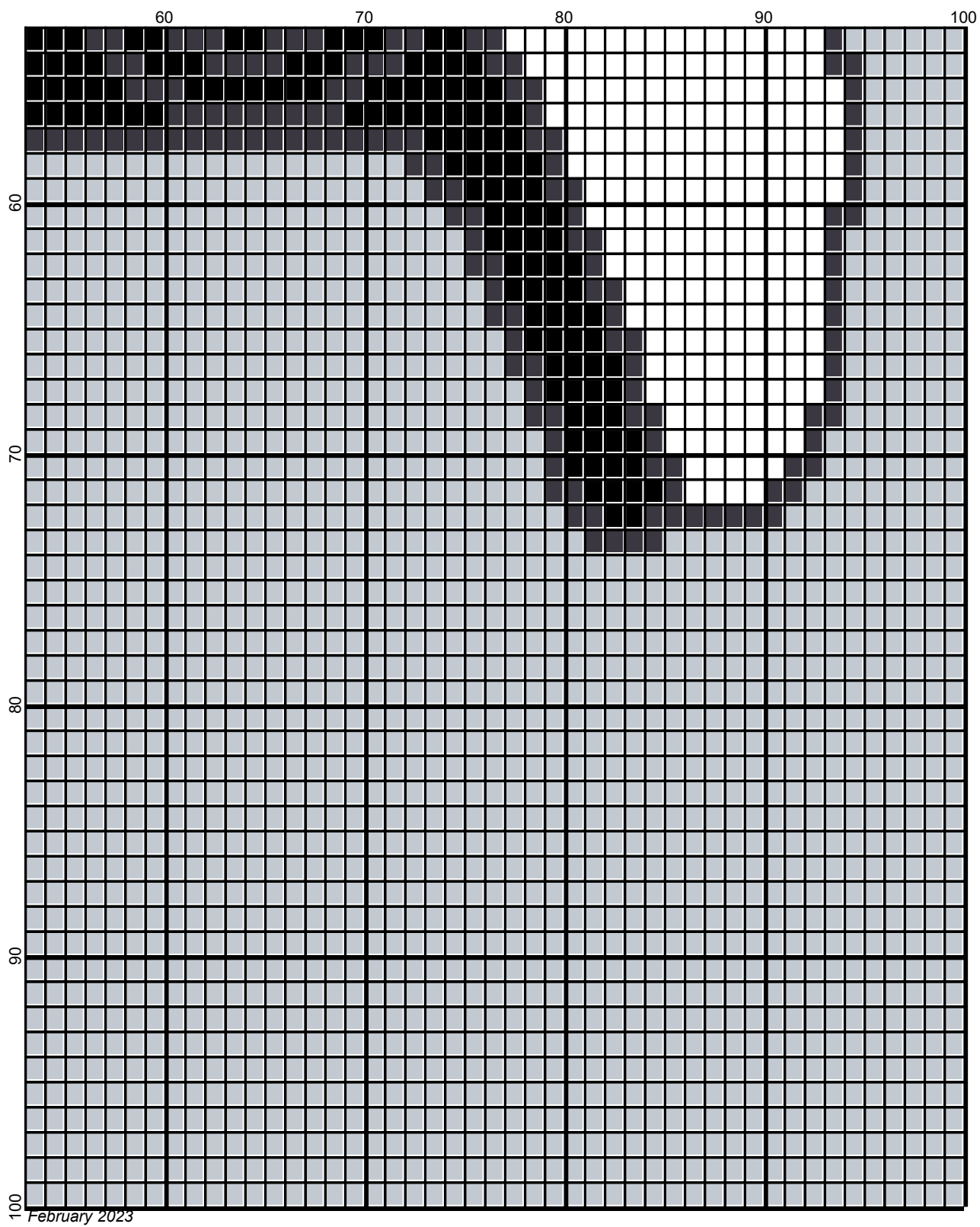
February 2023



February 2023



Legend:



■ RHS-312 ■ RHS-886 ■ RHS-3950 ■ RHS-341 □ RHS-311