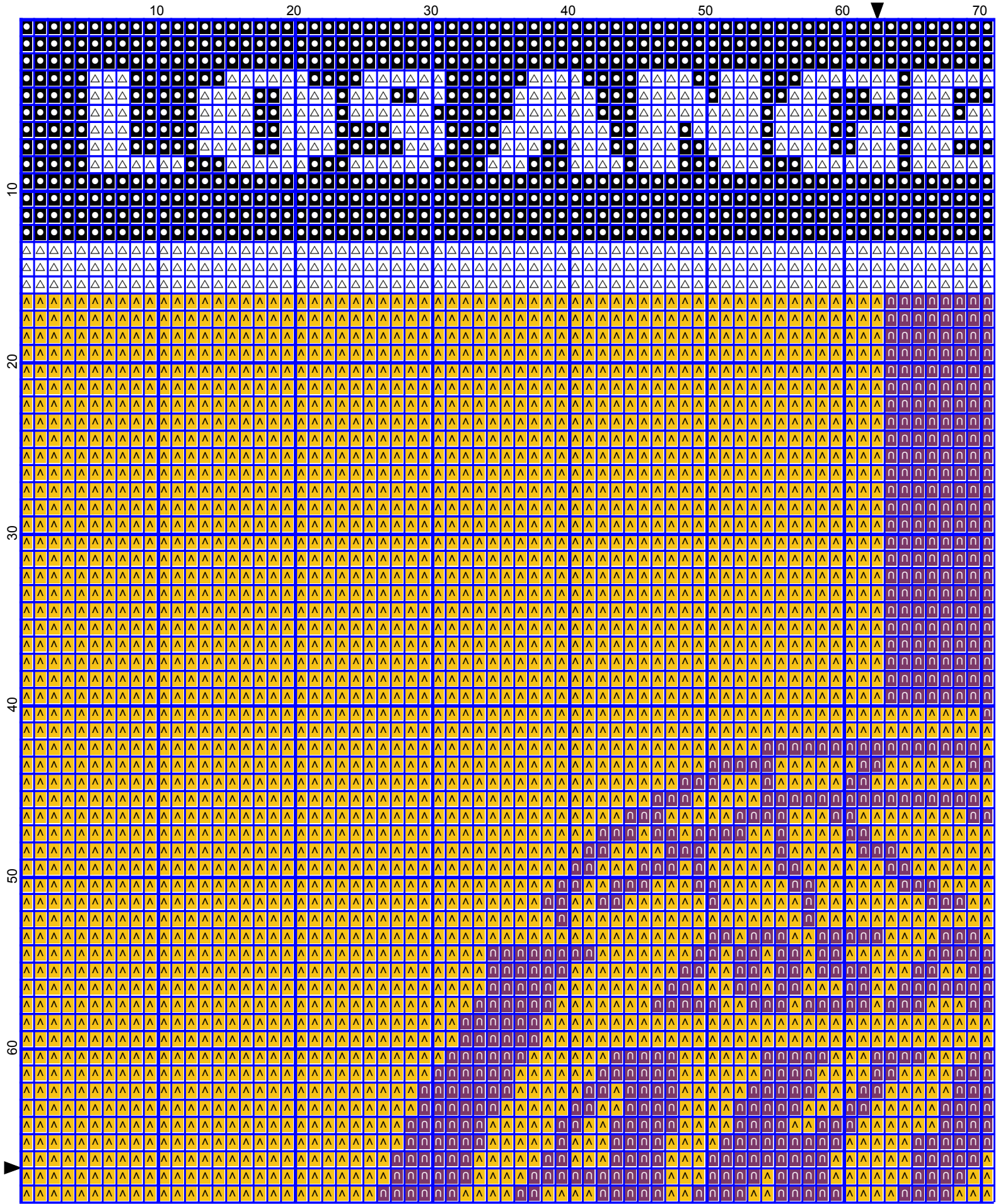
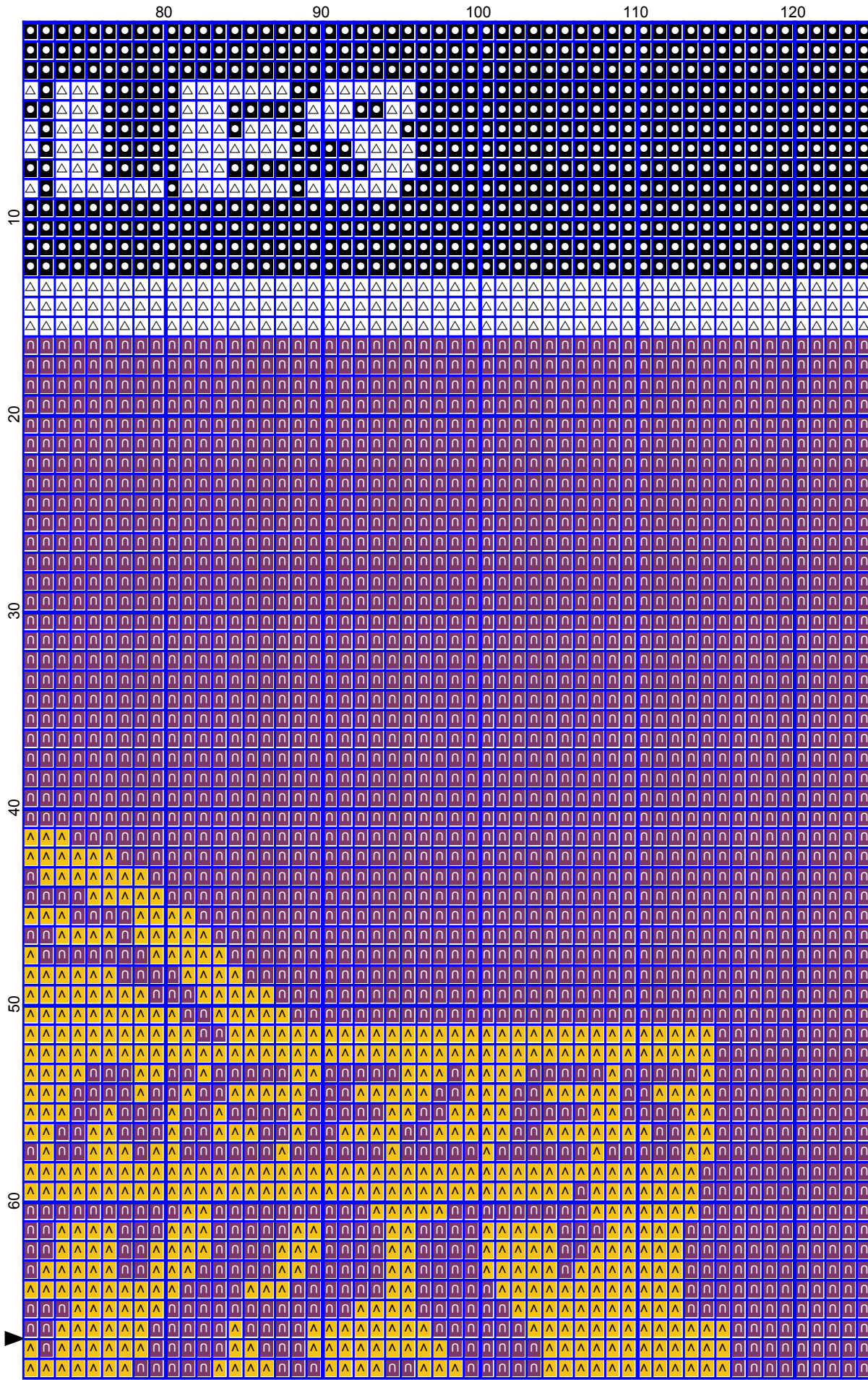


Los Angeles Lakers by Donna Hammell



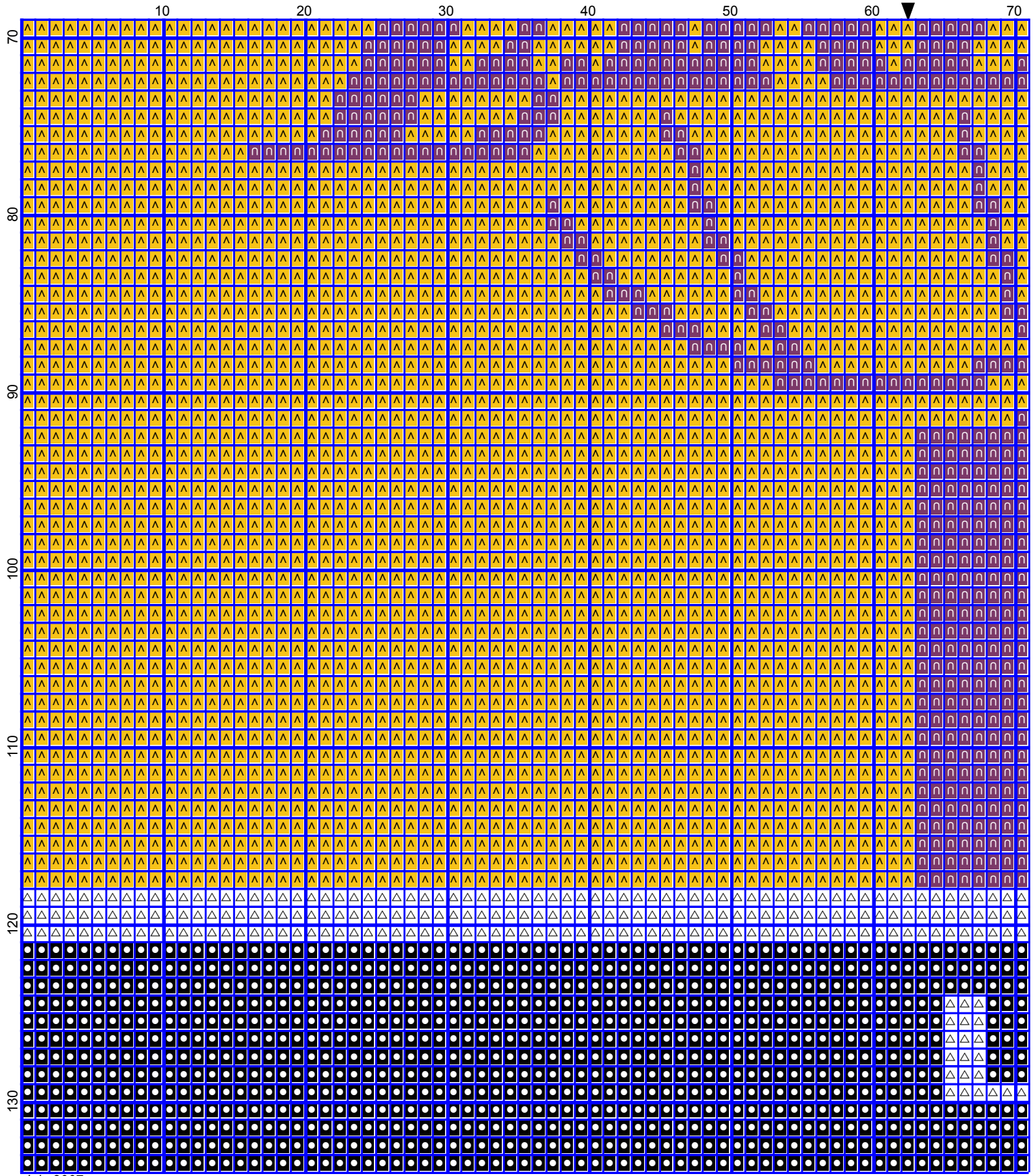
July 2007

Los Angeles Lakers by Donna Hammell



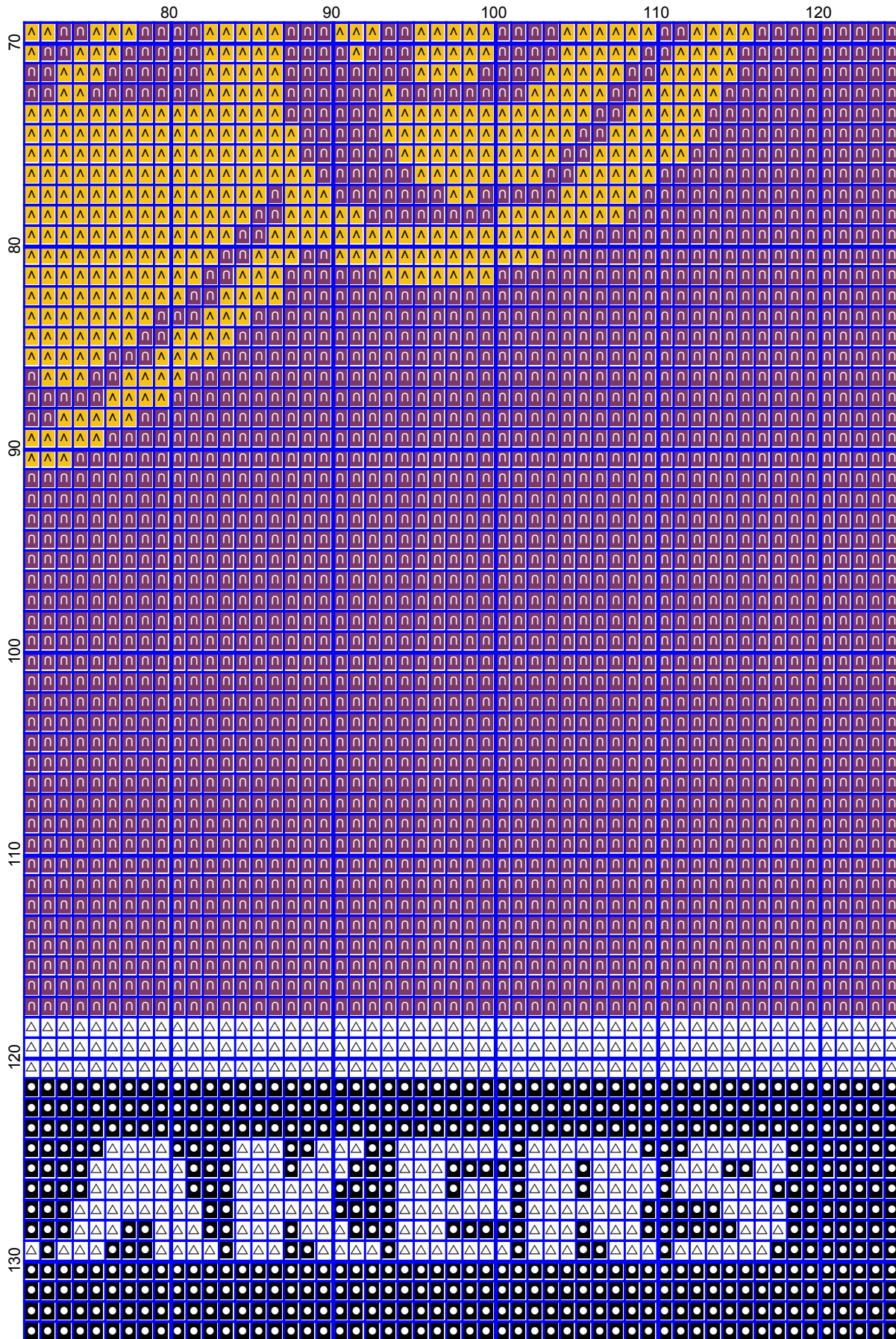
July 2007

Los Angeles Lakers by Donna Hammell



July 2007

Los Angeles Lakers by Donna Hammell




July 2007

# Los Angeles Lakers

---

**Author:** Donna Hammell  
**Copyright:** July 2007  
**Website:** www.geocities.com/crochetshoppe/patterns.html  
**Grid Size:** 125W x 134H  
**Design Area:** 12.50" x 16.75" (125 x 134 stitches)

## Legend:

  [2] DMC 310 black        [2] DMC 552 violet - md        [2] DMC 972 canary - dp        [2] DMC 5200 snow white

Instructions for using the graph.

GAUGE= 5 STS = 1"  
4 ROWS = 1"

I USED SIZE "H" AFGHAN HOOK, USE WHATEVER SIZE GIVES YOU THE CORRECT GAUGE. CAN BE DONE IN AFGHAN STITCH OR SINGLE CROCHET.

EACH SQUARE ON THE GRAPH REPRESENTS 1 STITCH. FOR SINGLE CROCHET READ THE CHART FROM RIGHT TO LEFT, AND THEN LEFT TO RIGHT. IF USING AFGHAN STITCH ALWAYS READ FROM THE RIGHT.

TO START: CHAIN ONE MORE STITCH THAN GRAPH.

YOU WILL NEED TO ADD STITCHES TO MAKE THE PIECE WIDER, AND ADD ROWS TO MAKE IT LONGER. THE DESIGN IS CENTERED, SO ADD STITCHES EVENLY TO BOTH SIDES.

ESTIMATED YARN NEEDED:  
BLACK ; 3 OUNCES  
CANARY/GOLD: 8 OUNCES  
VIOLET: 6 OUNCES  
WHITE: 2 OUNCES