

September 2025







Legend:

- RHS-312
- RHS-324
- RHS-319
- RHS-RH400
- RHS-254
- RHS-316

jack_skellington_christmas_hat_140x160

Author: Donna Hammell
Copyright: September 2025
Website: www.donnascrochetshoppe.com
Grid Size: 140W x 160H
Design Area: 14.00" x 20.00" (140 x 160 stitches)

Legend:

 [2] RHS	312 Black	 [2] RHS	319 Cherry Red	 [2] RHS	254 Pumpkin
 [2] RHS	324 Bright Yellow	 [2] RHS	RH400 Gray Heather	 [2] RHS	316 Soft White

Instructions for using the graph.

GAUGE= 5 STS = 1"
4 ROWS = 1"

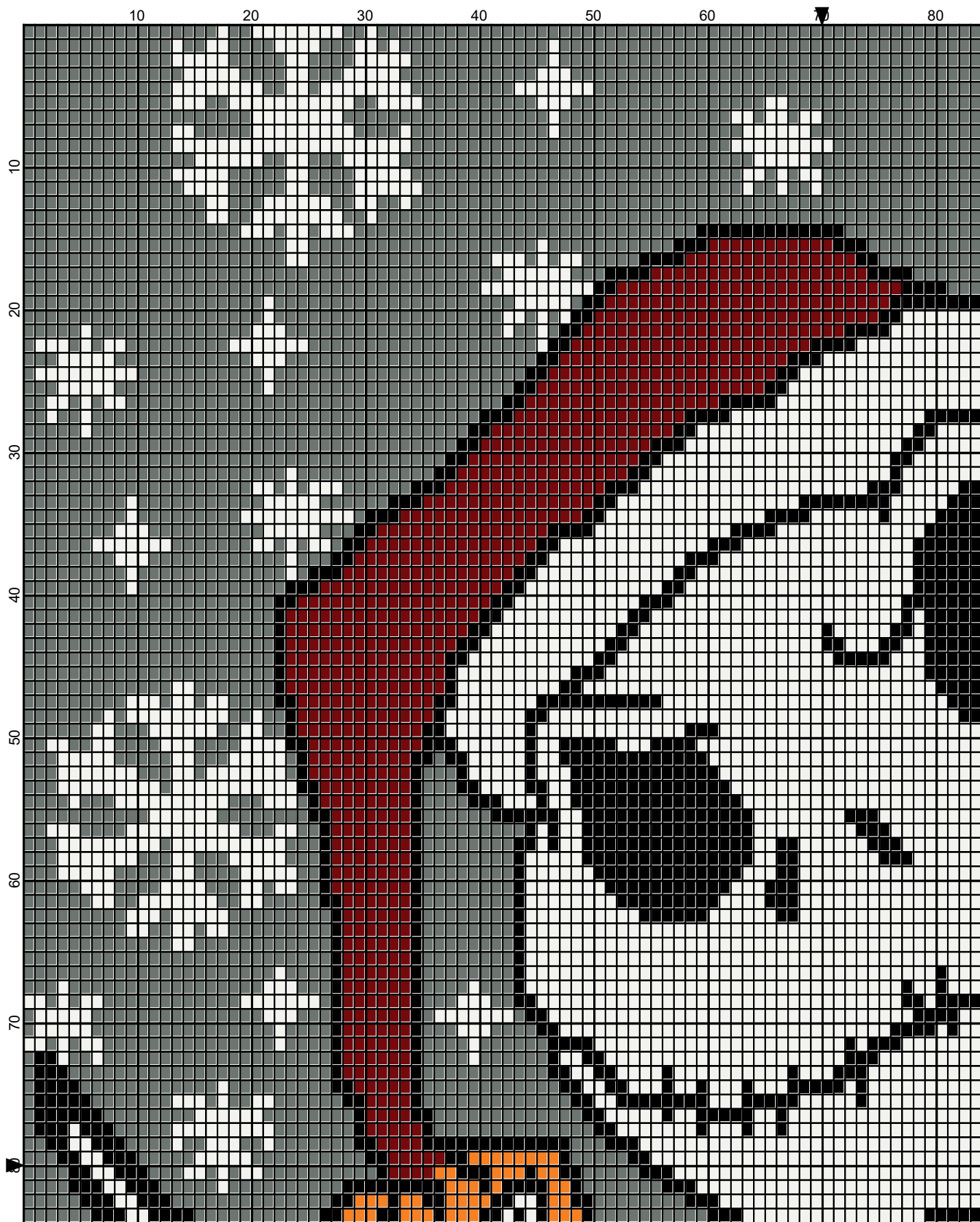
I USED SIZE "H" AFGHAN HOOK, USE WHATEVER SIZE GIVES YOU THE CORRECT GAUGE. CAN BE DONE IN AFGHAN STITCH OR SINGLE CROCHET.

EACH SQUARE ON THE GRAPH REPRESENTS 1 STITCH. FOR SINGLE CROCHET READ THE CHART FROM RIGHT TO LEFT, AND THEN LEFT TO RIGHT. IF USING AFGHAN STITCH ALWAYS READ FROM THE RIGHT.

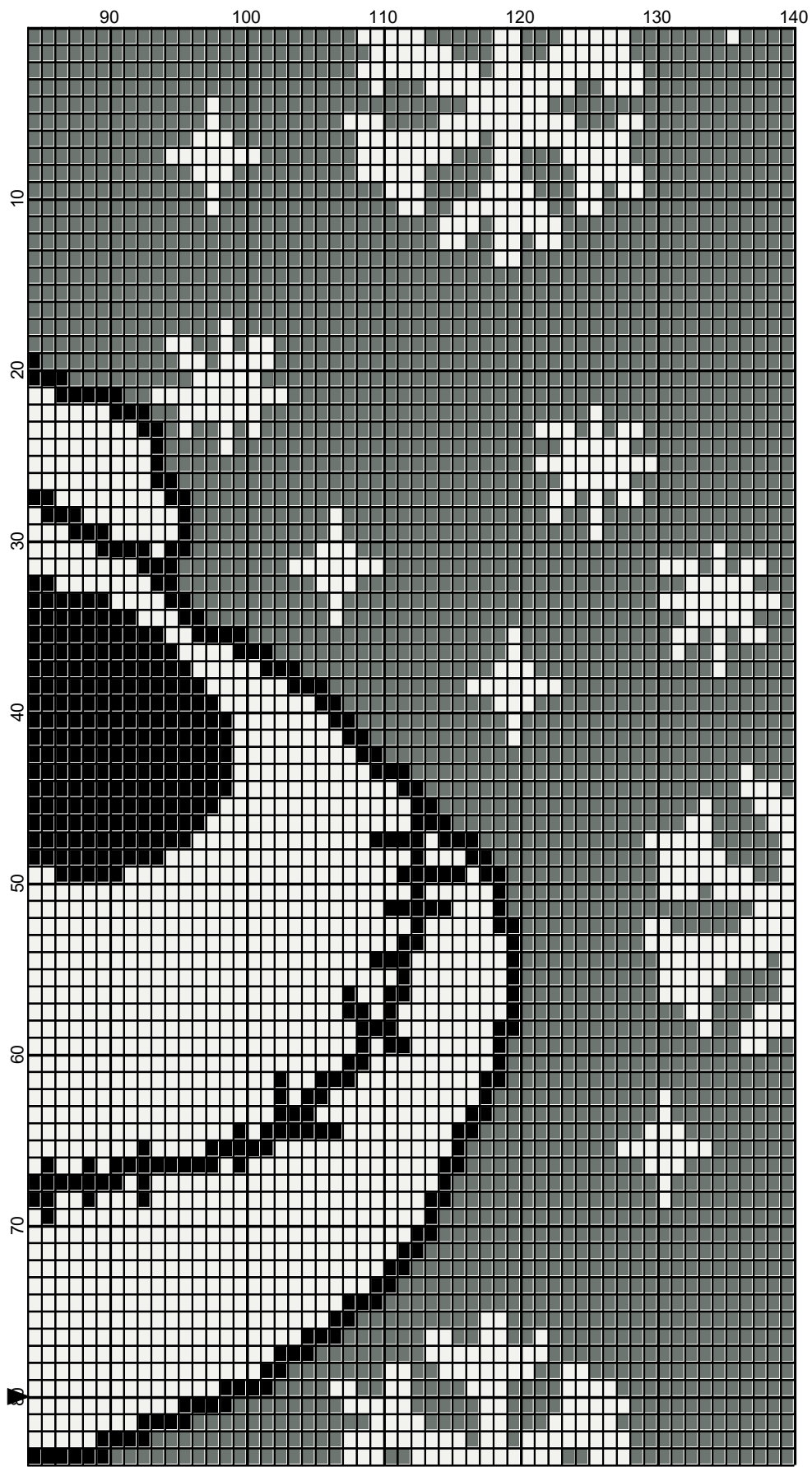
TO START: CHAIN ONE MORE STITCH THAN GRAPH.

ESTIMATED RED HEART YARN NEEDED:

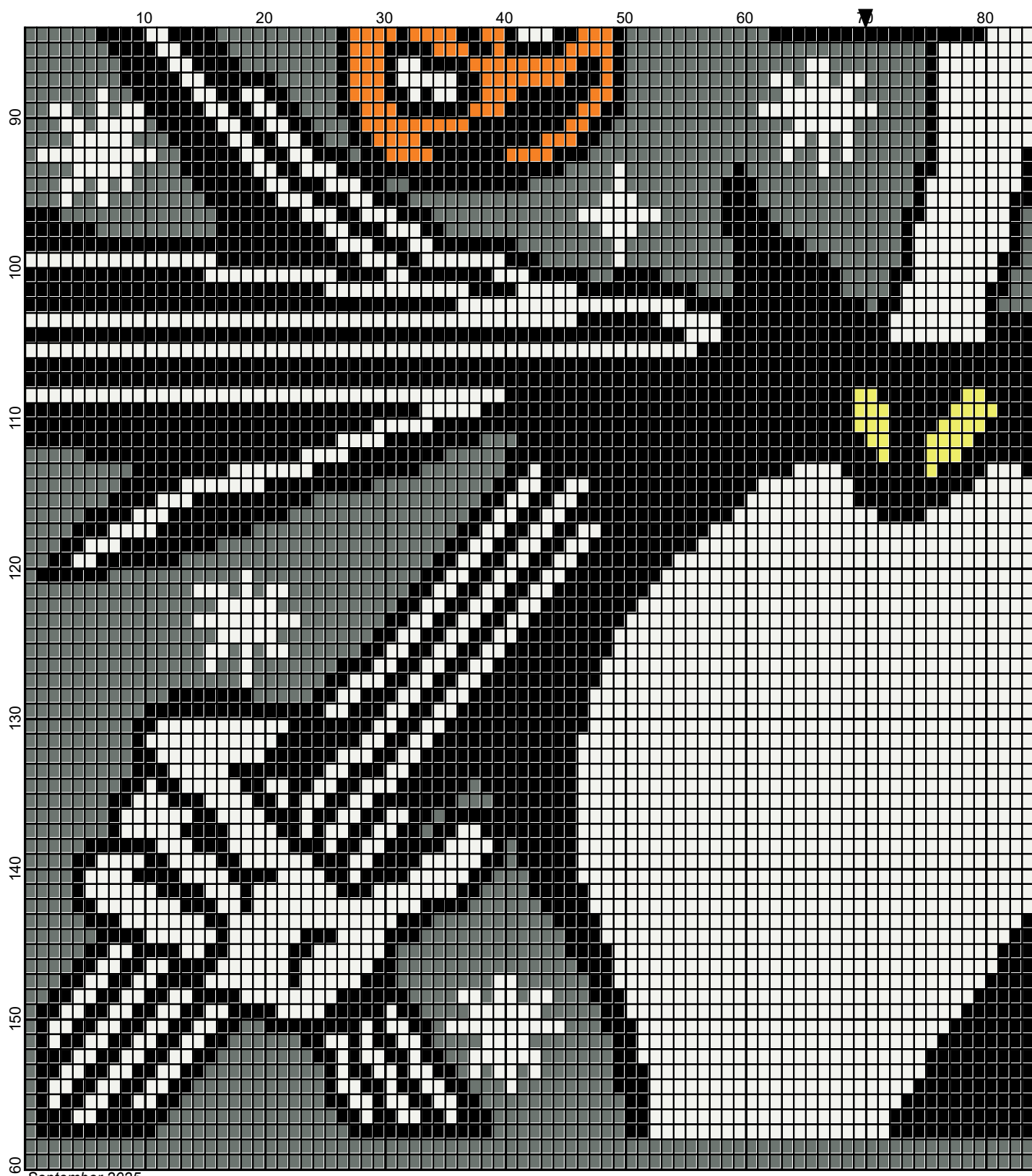
BLACK :8 OUNCES/325 YDS
WHITE: 10 OUNCES/499 YDS
CHERRY RED: 1 OUNCE/55 YDS
YELLOW :SMALL AMT/7 YDS
ORANGE: SMALL AMT/14 YDS



September 2025

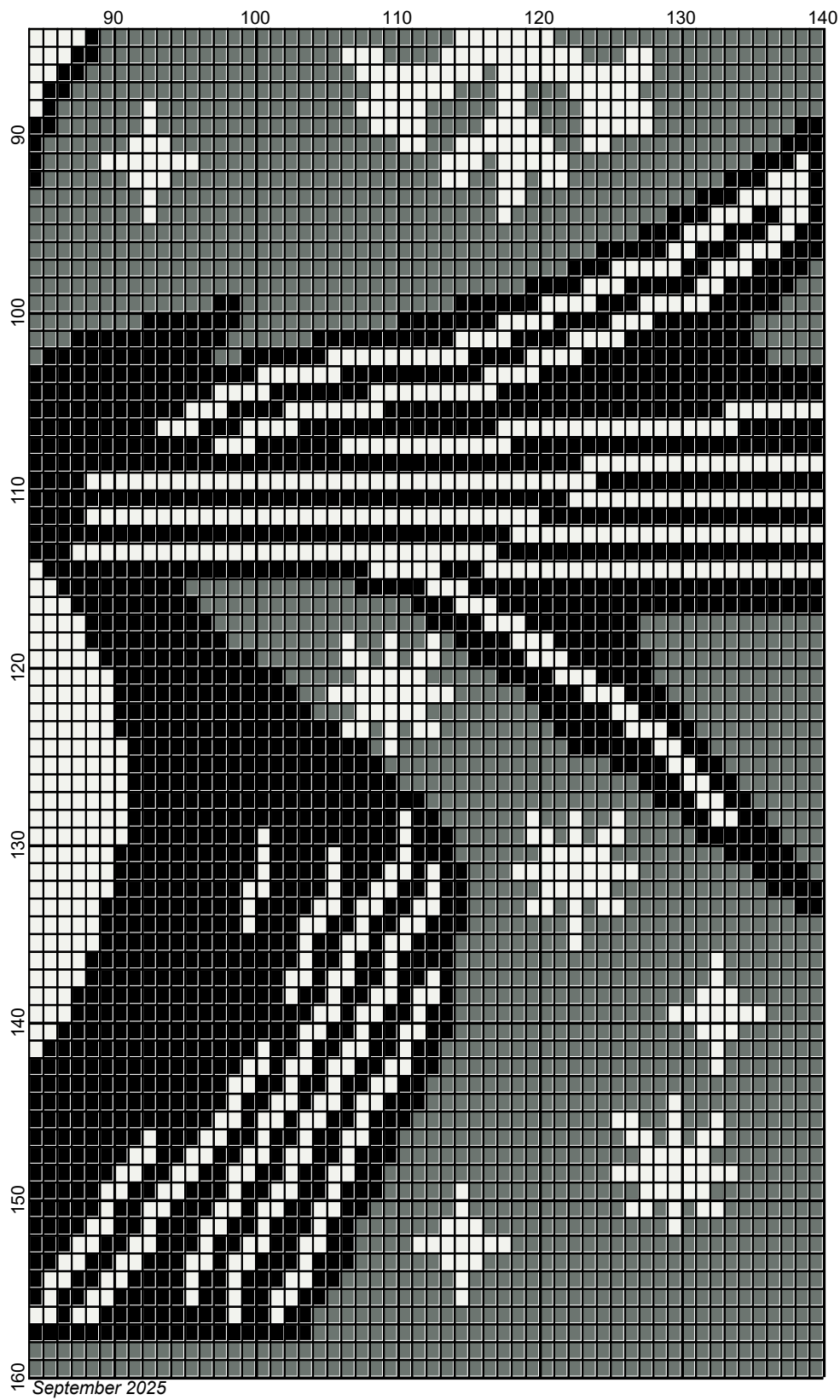


September 2025



September 2025

Legend:



- RHS-312
- RHS-324
- RHS-319
- RHS-RH400
- RHS-254
- RHS-316