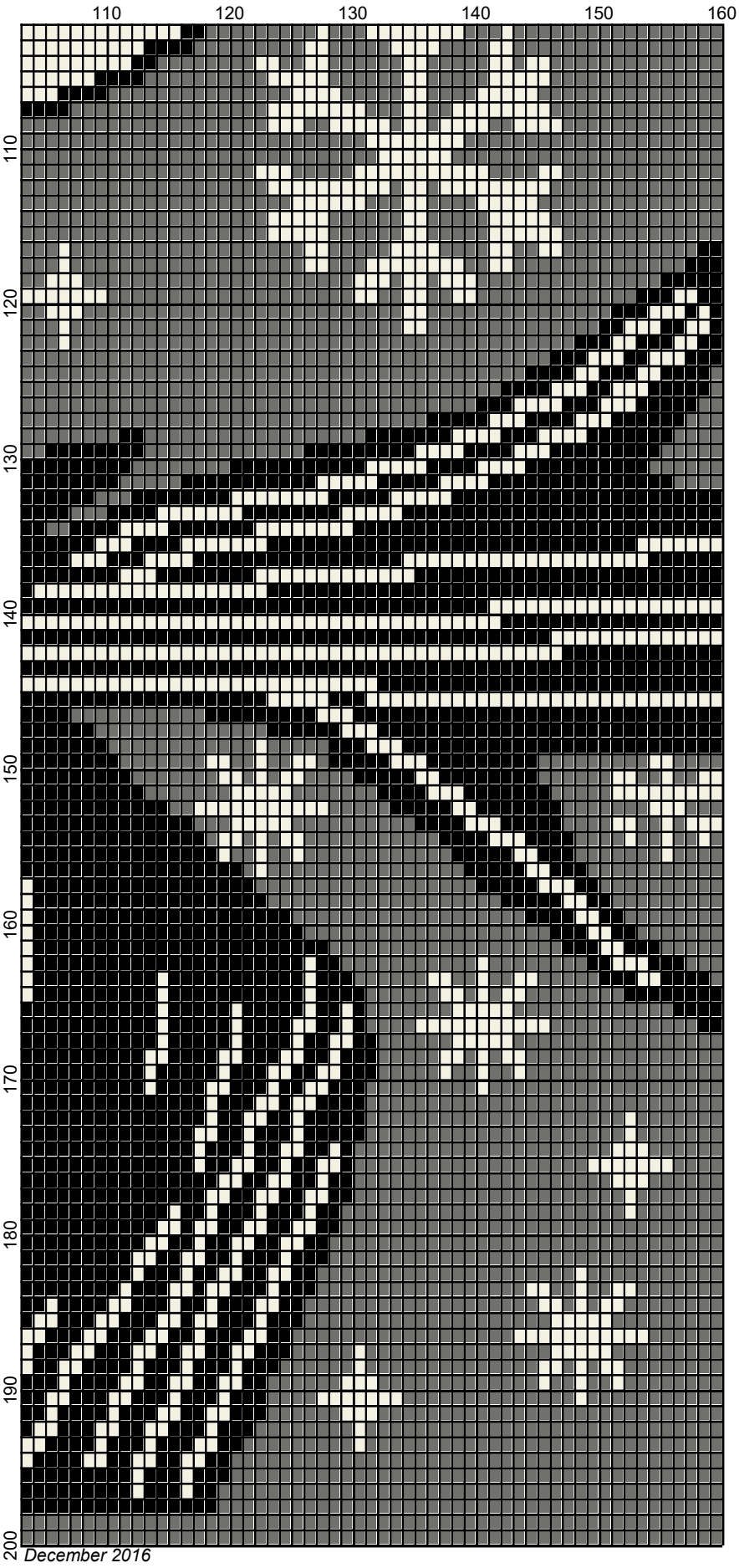




December 2016









December 2016

jack_skellington_christmas_hat

Author: Donna Hammell
Company: Donna's Crochet Shoppe
Copyright: December 2016
Website: www.donnascrochetshoppe.com
Grid Size: 160W x 200H
Design Area: 16.00" x 25.00" (160 x 200 stitches)

Legend:

	[2] RHC	0111 Eggshell		[2] RHC	312 Black		[2] RHC	245 Orange
	[2] RHC	319 Cherry Red		[2] RHC	0401 Nickel		[2] RHC	0230 Yellow

Instructions for using the graph.

GAUGE= 5 STS = 1"
4 ROWS = 1"

I USED SIZE "H" AFGHAN HOOK,USE WHATEVER SIZE GIVES YOU THE CORRECT GAUGE. CAN BE DONE IN AFGHAN STITCH OR SINGLE CROCHET.

EACH SQUARE ON THE GRAPH REPRESENTS 1 STITCH. FOR SINGLE CROCHET READ THE CHART FROM RIGHT TO LEFT, AND THEN LEFT TO RIGHT. IF USING AFGHAN STITCH ALWAYS READ FROM THE RIGHT.

TO START: CHAIN ONE MORE STITCH THAN GRAPH.

ESTIMATED RED HEART YARN NEEDED:

BLACK ;10 OUNCES
OFF WHITE/EGGSHELL: 14 OUNCES
CHERRY RED:2 OUNCES
YELLOW :SMALL AMT
ORANGE: SMALL AMT