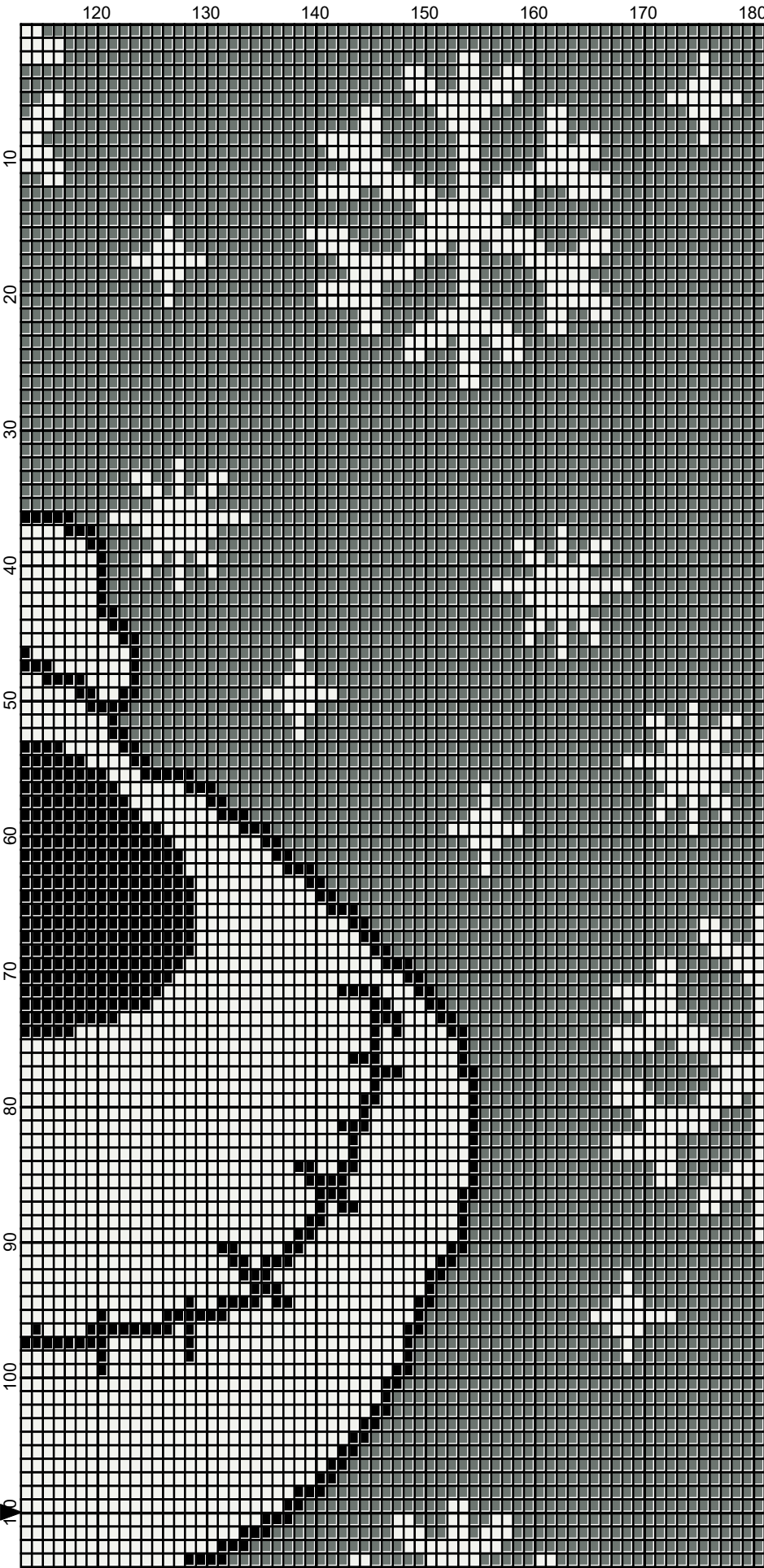


July 2018





July 2018









July 2018

jack_skellington_christmas_181x220

Author: Donna Hammell
Company: Donna's Crochet Shoppe
Copyright: July 2018
Website: www.donnascrochetshoppe.com
Grid Size: 181W x 220H
Design Area: 18.10" x 27.50" (181 x 220 stitches)

Legend:

 [2] RHS	316 Soft White	 [2] RHS	RH400 Gray Heather	 [2] RHS	254 Pumpkin
 [2] RHS	319 Cherry Red	 [2] RHS	312 Black	 [2] RHS	324 Bright Yellow

Instructions for using the graph.

GAUGE= 5 STS = 1"
4 ROWS = 1"

I USED SIZE "H" AFGHAN HOOK,USE WHATEVER SIZE GIVES YOU THE CORRECT GAUGE. CAN BE DONE IN AFGHAN STITCH OR SINGLE CROCHET.

EACH SQUARE ON THE GRAPH REPRESENTS 1 STITCH. FOR SINGLE CROCHET READ THE CHART FROM RIGHT TO LEFT, AND THEN LEFT TO RIGHT. IF USING AFGHAN STITCH ALWAYS READ FROM THE RIGHT.

TO START: CHAIN ONE MORE STITCH THAN GRAPH.

ESTIMATED RED HEART YARN NEEDED:
BLACK ;12 OUNCES
WHITE: 18 OUNCES
CHERRY RED:2 OUNCES
YELLOW :SMALL AMT
GRAY HEATHER 22 OUNCES
ORANGE: SMALL AMT