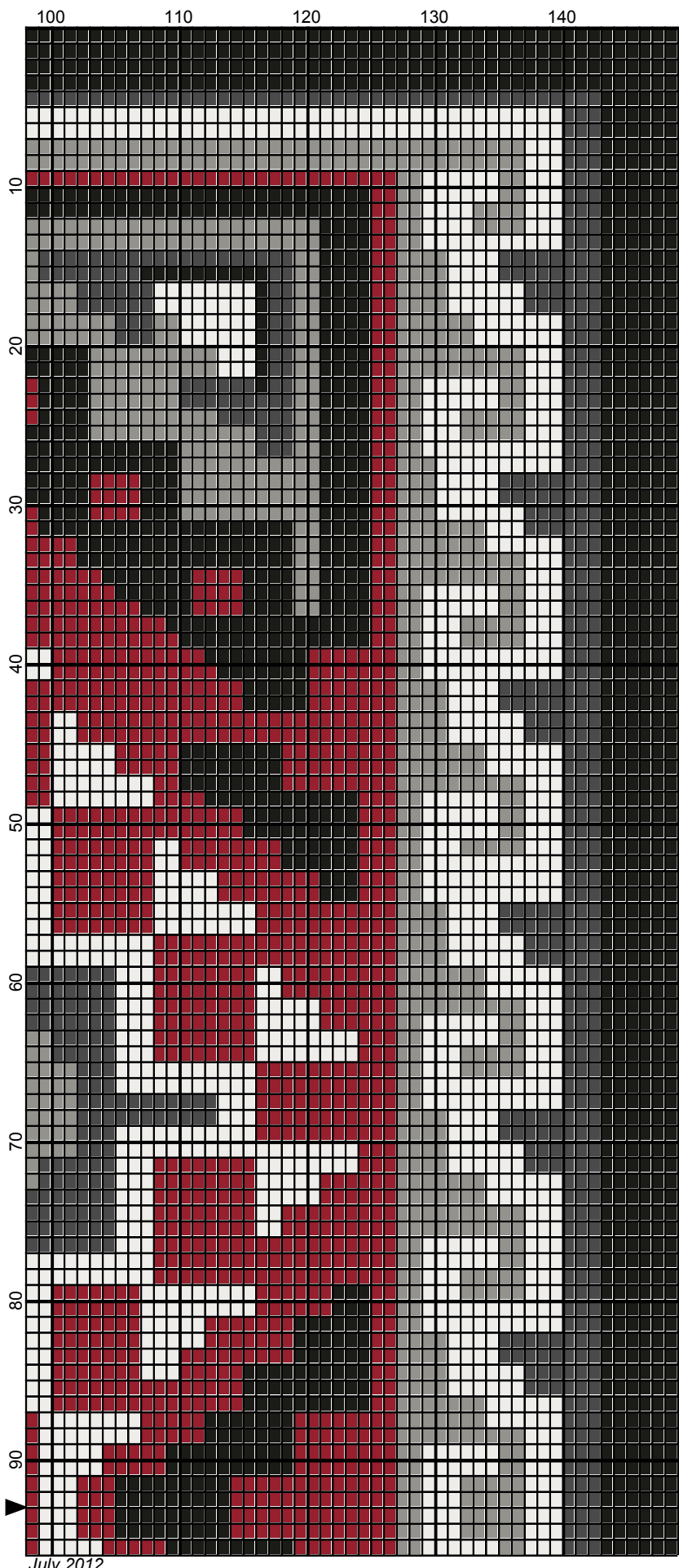


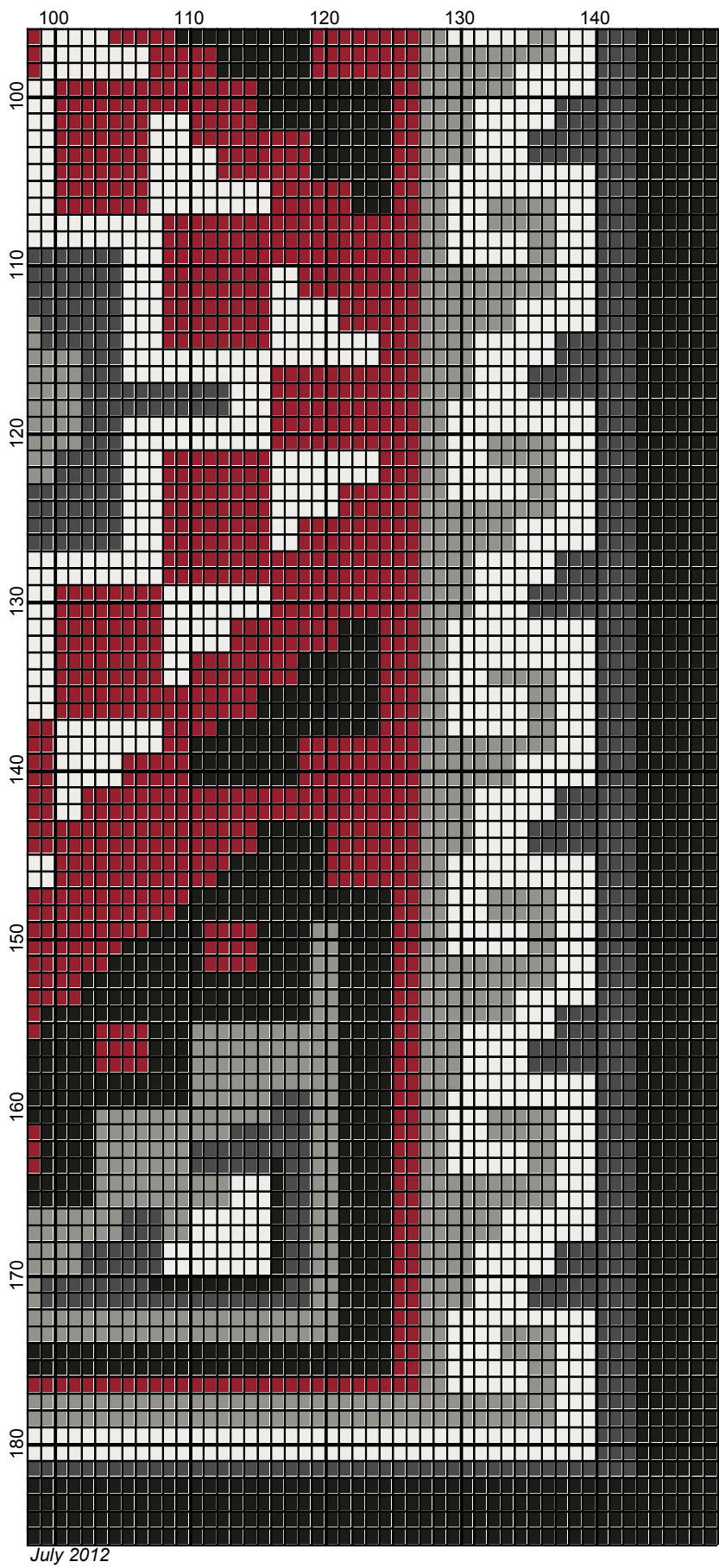


July 2012





July 2012








July 2012

# indian\_blanket

---

**Author:** Donna Hammell  
**Copyright:** July 2012  
**Website:** www.donnascrochetshoppe.com  
**Grid Size:** 149W x 186H  
**Design Area:** 14.90" x 23.25" (149 x 186 stitches)

**Legend:**  
 [2] 536 07421 Black       [2] 536 07407 Winter White       [2] 536 53436 Cherry Red  
 [2] 536 53045 Granite       [2] 536 53044 True Grey

Instructions for using the graph.

GAUGE= 5 STS = 1"  
4 ROWS = 1"

I USED SIZE "H" AFGHAN HOOK,USE WHATEVER SIZE GIVES YOU THE CORRECT GAUGE. CAN BE DONE IN AFGHAN STITCH OR SINGLE CROCHET.

EACH SQUARE ON THE GRAPH REPRESENTS 1 STITCH. FOR SINGLE CROCHET READ THE CHART FROM RIGHT TO LEFT, AND THEN LEFT TO RIGHT. IF USING AFGHAN STITCH ALWAYS READ FROM THE RIGHT.

TO START: CHAIN ONE MORE STITCH THAN GRAPH.

IF YOU NEED TO MAKE THE PIECE WIDER ADD AN EVEN NUMBER OF STITCHES TO BOTH SIDES, AND ADD ROWS TO MAKE IT LONGER. THE DESIGN IS CENTERED, SO ADD STITCHES EVENLY TO BOTH SIDES.

ESTIMATED YARN NEEDED:  
BLACK:8 OUNCES  
GRANITE: 4 OUNCES  
WHITE: 6 OUNCES  
TRUE GREY: 6 OUNCES  
CHERRY RED; 7 OUNCES