



Legend:

- RHS-312 ■ RHS-RH400 ■ RHS-341 ■ RHS-316

harry_potter_150x200

Author: Donna Hammell
Copyright: April 2024
Website: www.donnascrochetshoppe.com
Grid Size: 150W x 200H
Design Area: 15.00" x 25.00" (150 x 200 stitches)

Legend:

■	[2] RHS	312 Black	■	[2] RHS	341 Light Gray
■	[2] RHS	RH400 Gray Heather	□	[2] RHS	316 Soft White

Instructions for using the graph.

GAUGE= 5 STS = 1"
4 ROWS = 1"

I USED SIZE "H" AFGHAN HOOK,USE WHATEVER SIZE GIVES YOU THE CORRECT GAUGE. CAN BE DONE IN AFGHAN STITCH OR SINGLE CROCHET.

EACH SQUARE ON THE GRAPH REPRESENTS 1 STITCH. FOR SINGLE CROCHET READ THE CHART FROM RIGHT TO LEFT, AND THEN LEFT TO RIGHT. IF USING AFGHAN STITCH ALWAYS READ FROM THE RIGHT.

TO START: CHAIN ONE MORE STITCH THAN GRAPH.

IF YOU NEED TO MAKE THE PIECE WIDER ADD STITCHES EVENLY TO BOTH SIDES, AND ADD ROWS TO MAKE IT LONGER. THE DESIGN IS CENTERED

ESTIMATED RED HEART YARN NEEDED:

BLACK ;20 OUNCES

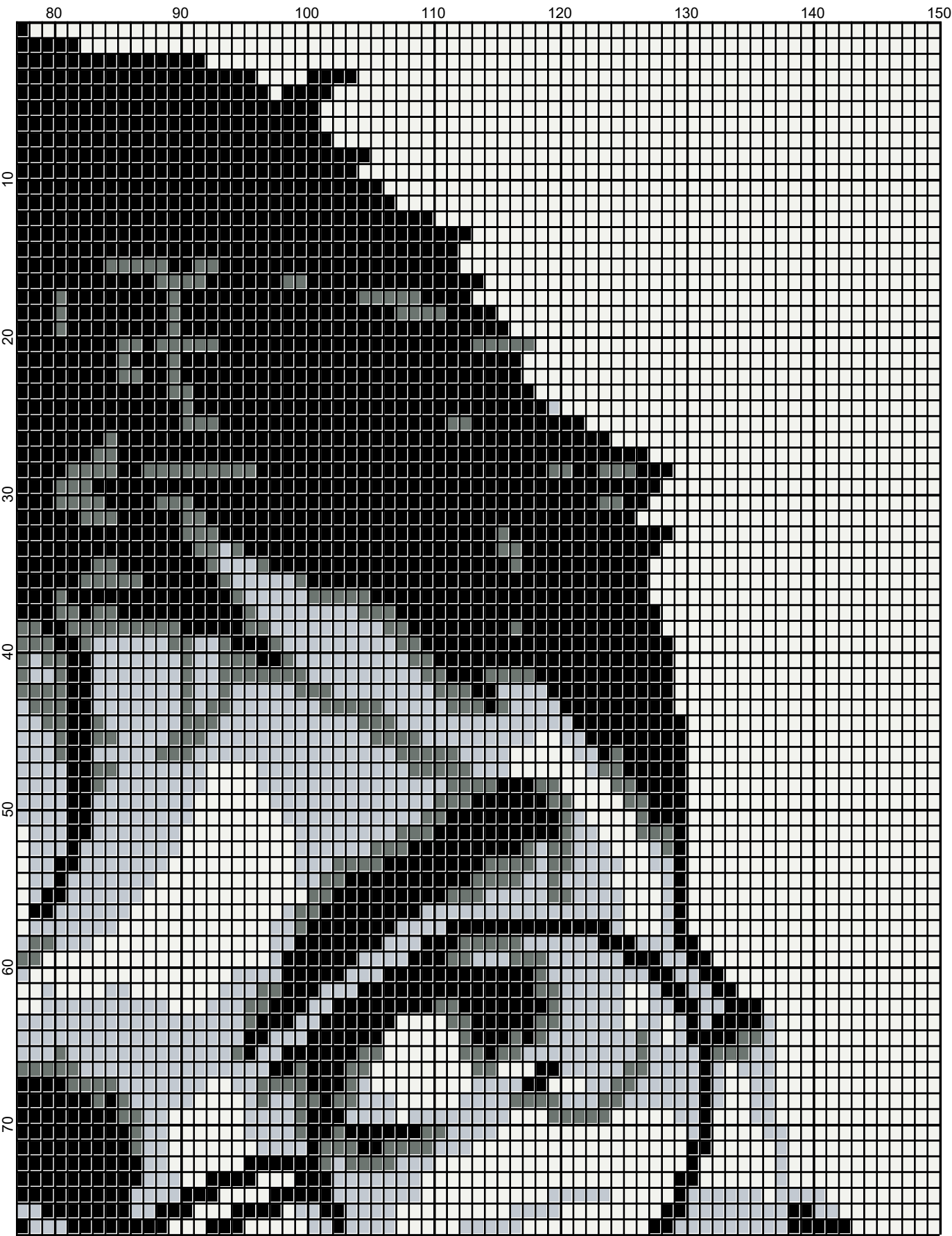
LT GRAY: 4 OUNCES

WHITE: 14 OUNCES

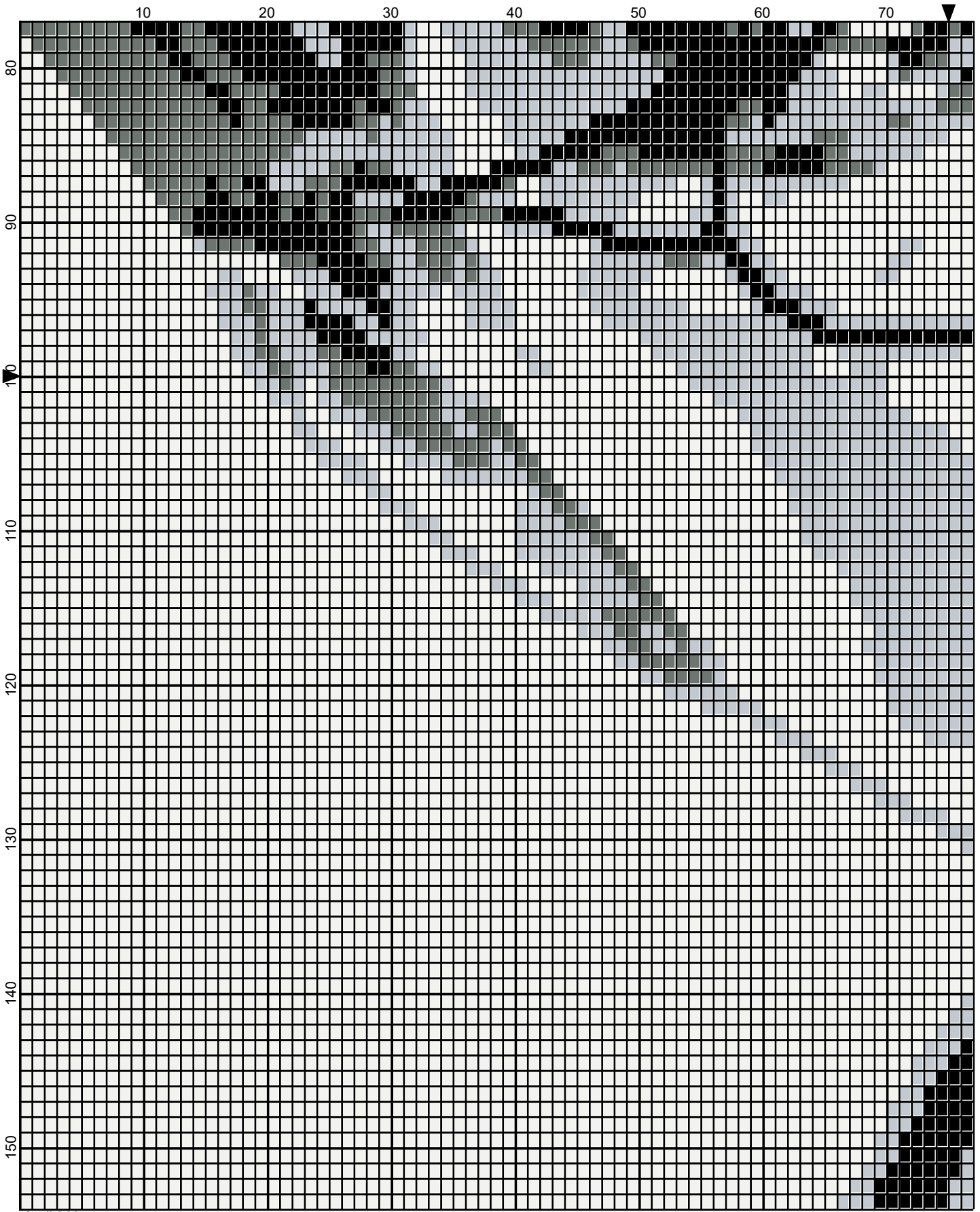
GRAY HEATHER: 4 OUNCES



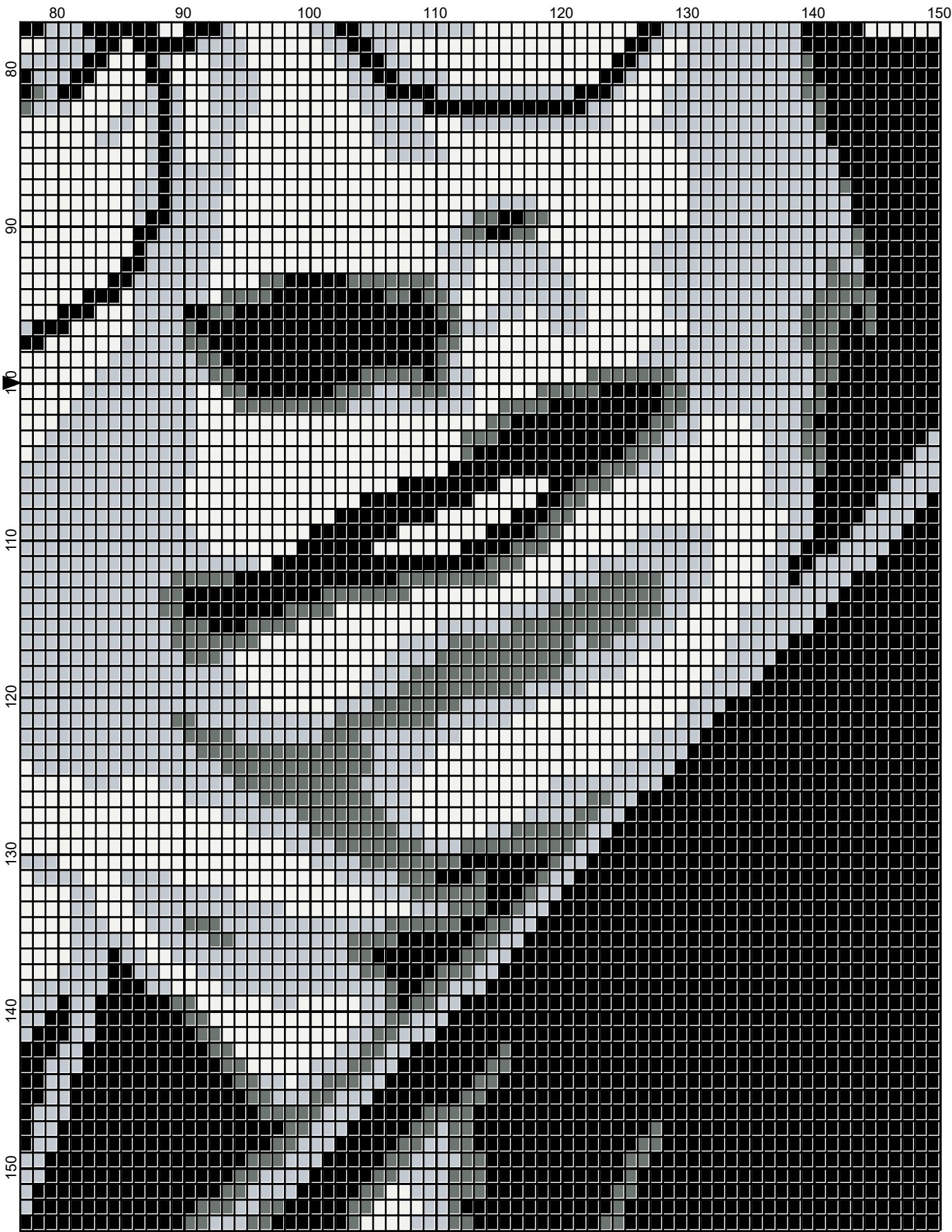
April 2024



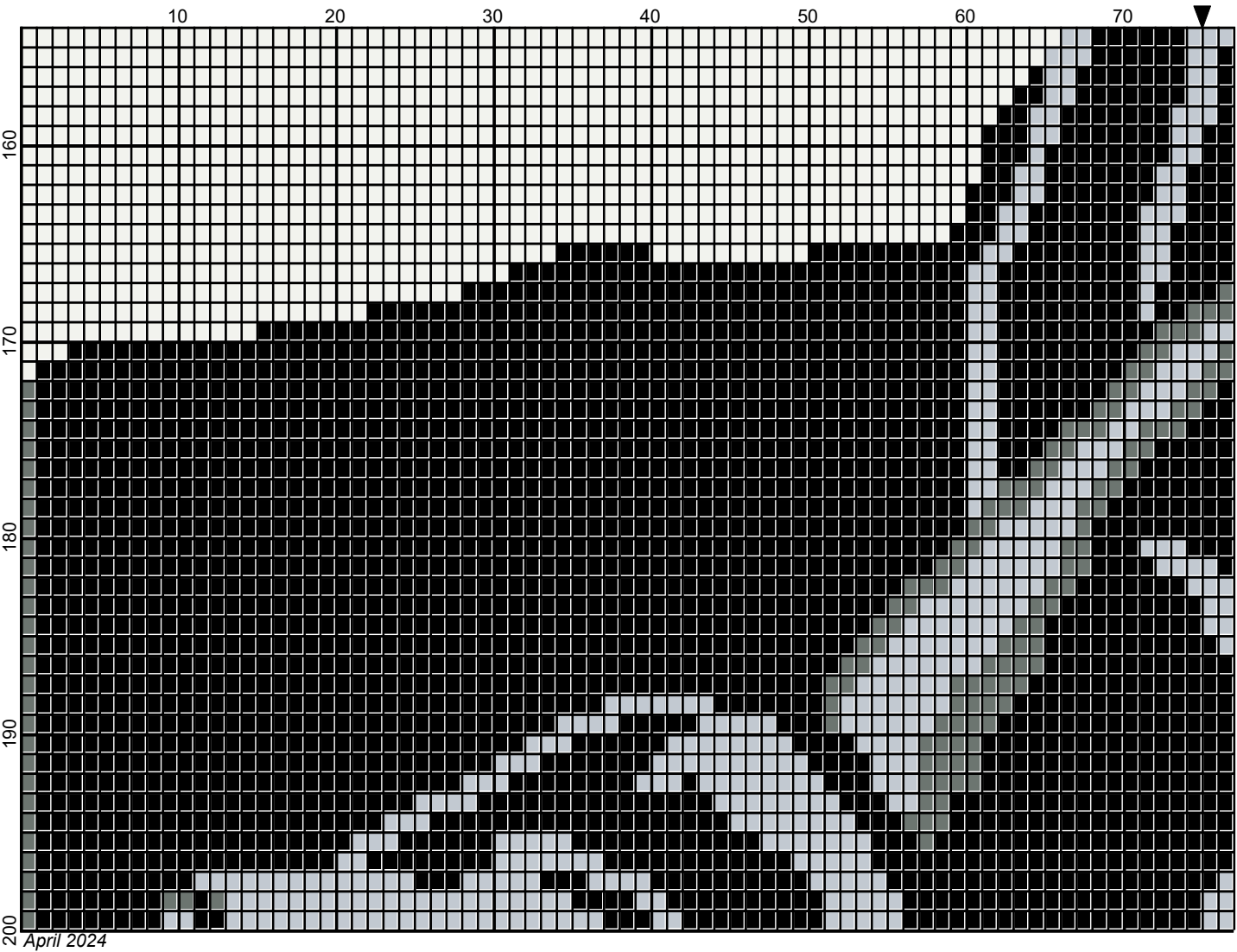
April 2024



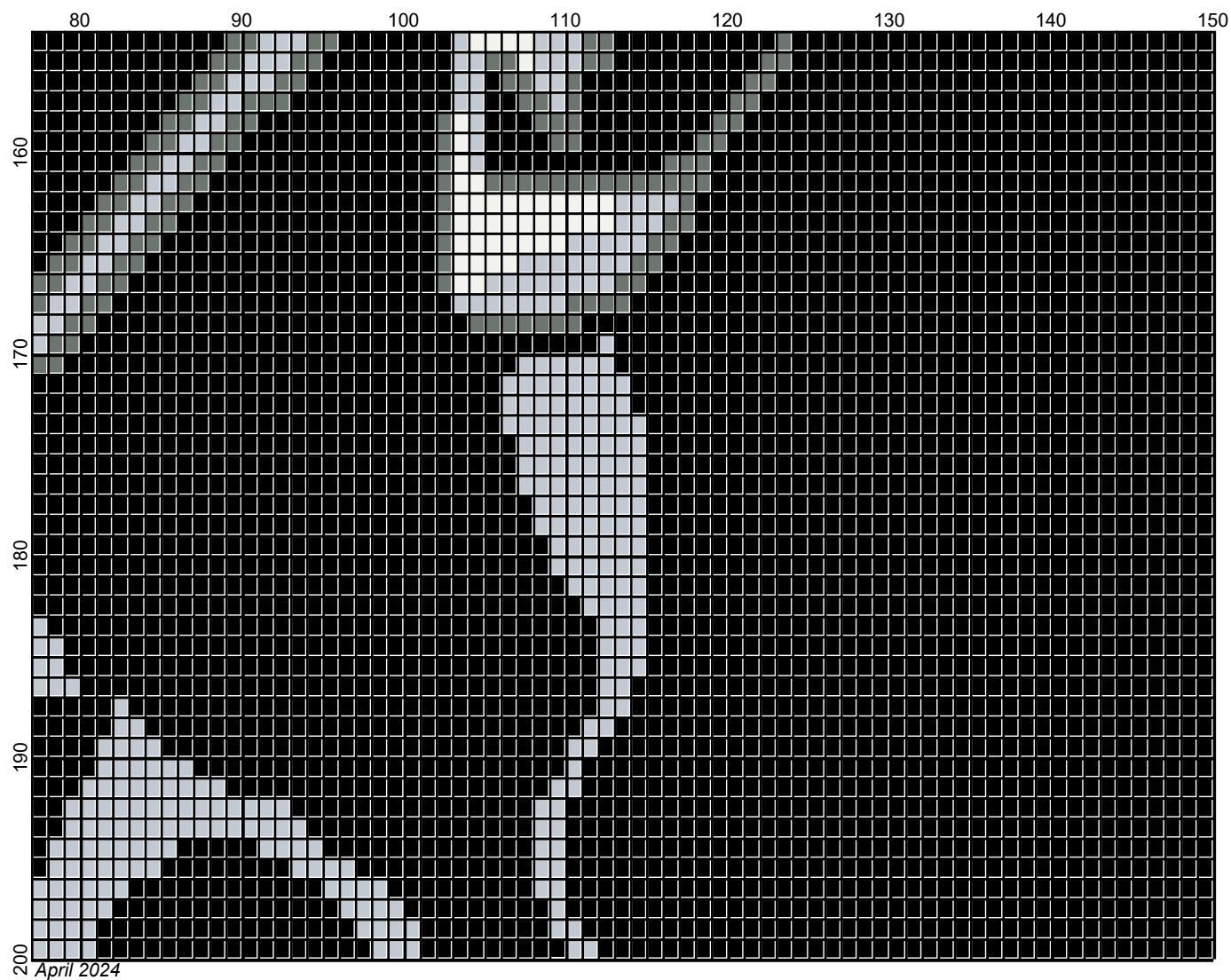
April 2024



April 2024



Legend:



■ RHS-312 ■ RHS-RH400 ■ RHS-341 ■ RHS-316