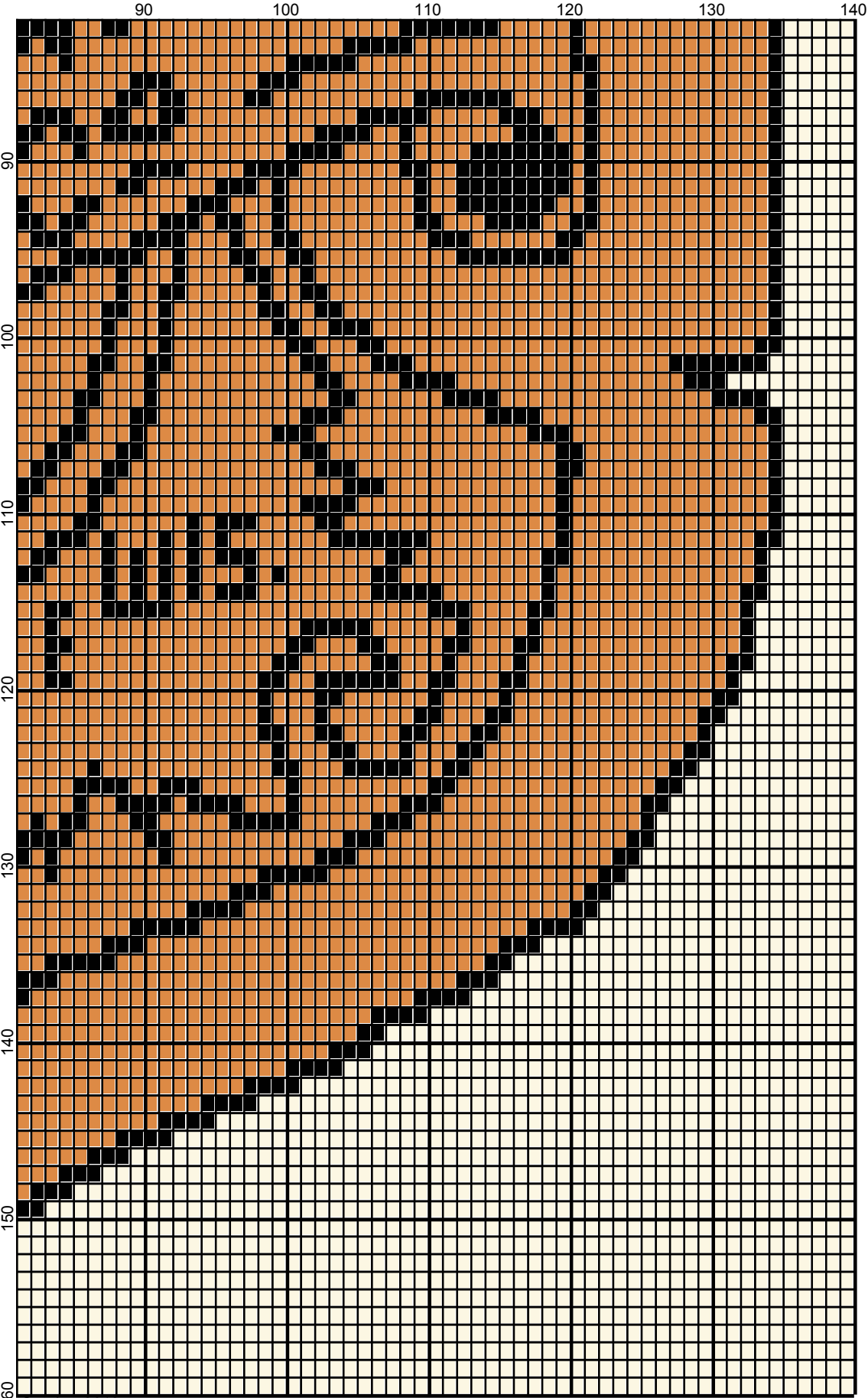


October 2013




October 2013

harley_milwaukee_140x160

Author: Donna Hammell
Copyright: October 2013
Website: www.donnascrochetshoppe.com
Grid Size: 140W x 160H
Design Area: 14.00" x 20.00" (140 x 160 stitches)

Legend:

 [2] BSS 53609 Bronze  [2] BSS 7421 Black  [2] BSS 7414 Natural

Instructions for using the graph.

GAUGE= 5 STS = 1"
4 ROWS = 1"

I USED SIZE "H" AFGHAN HOOK, USE WHATEVER SIZE GIVES YOU THE CORRECT GAUGE. CAN BE DONE IN AFGHAN STITCH OR SINGLE CROCHET.

EACH SQUARE ON THE GRAPH REPRESENTS 1 STITCH. FOR SINGLE CROCHET READ THE CHART FROM RIGHT TO LEFT, AND THEN LEFT TO RIGHT. IF USING AFGHAN STITCH ALWAYS READ FROM THE RIGHT.

TO START: CHAIN ONE MORE STITCH THAN GRAPH.

IF YOU NEED TO ADD STITCHES TO MAKE THE PIECE WIDER, AND ADD ROWS TO MAKE IT LONGER. THE DESIGN IS CENTERED, SO ADD STITCHES EVENLY TO BOTH SIDES.

ESTIMATED BERNAT SUPER SAVER YARN NEEDED:

BRONZE: 12 OUNCES

BLACK: 5 OUNCES

BACKGROUND: 10 OUNCES