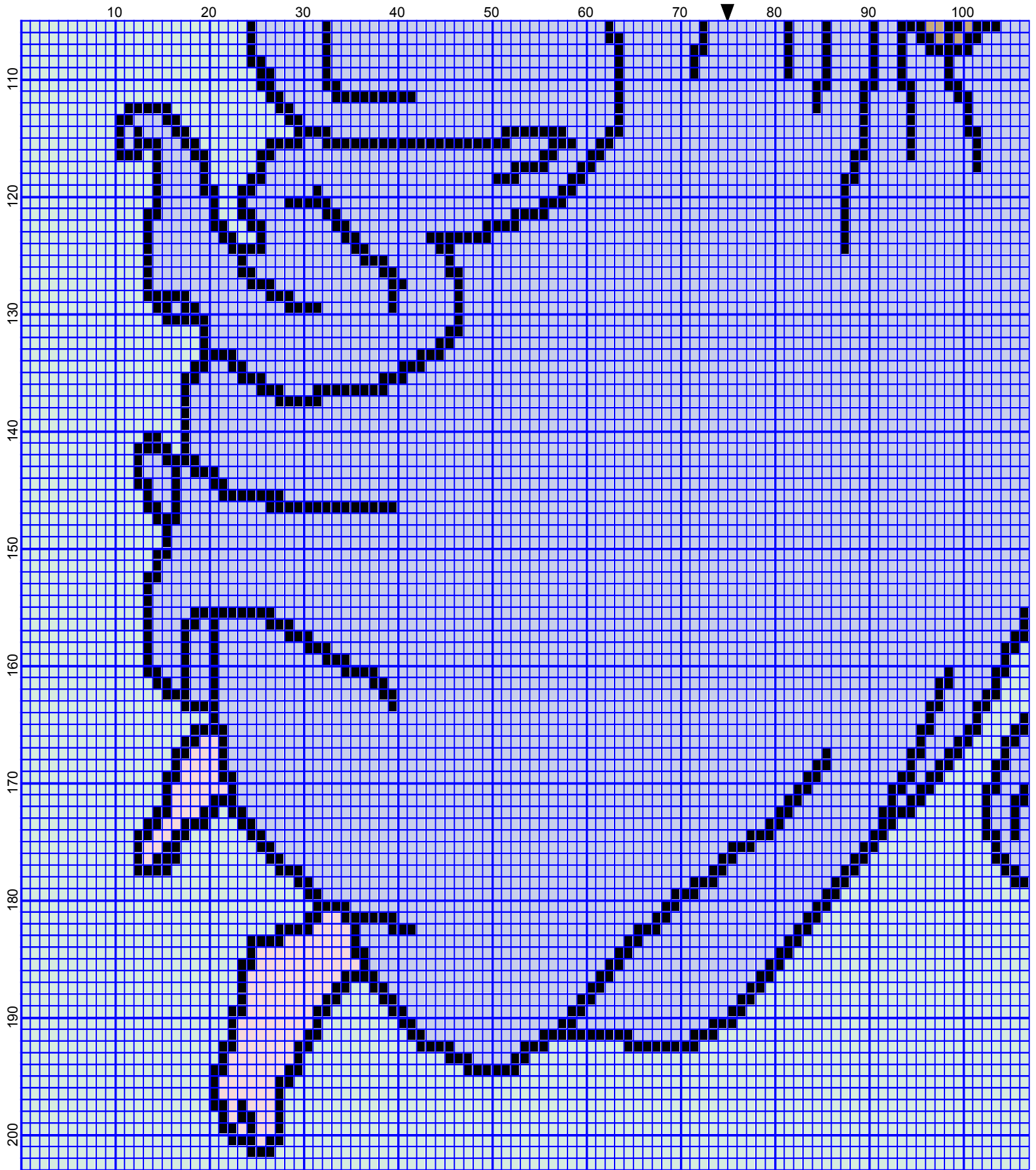
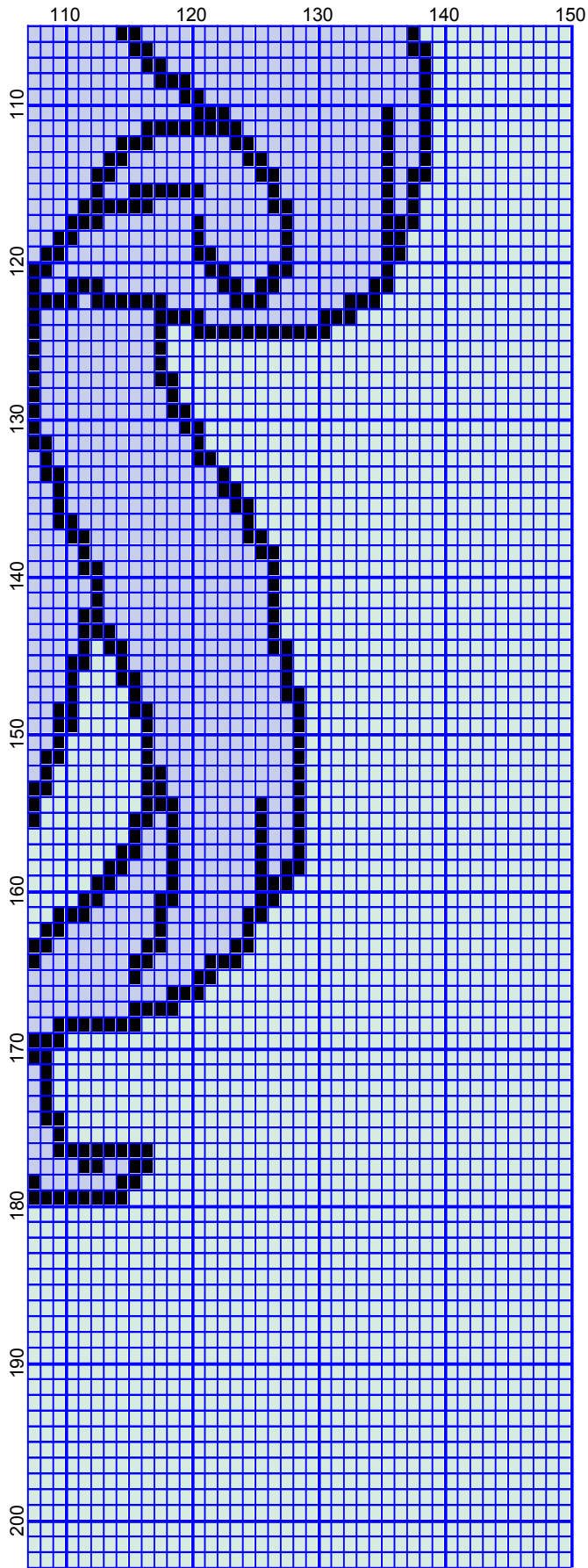


March 2008



March 2008










March 2008

Angel

Author: Donna Hammell
Copyright: March 2008
Website: www.geocities.com/crochetshoppe/index.html
Grid Size: 150W x 203H
Design Area: 15.00" x 25.38" (150 x 203 stitches)

Legend:

 [2] SSO SS2680 BLACK	 [2] SSO SS2615 SOFT BLUE	 [2] SSO SS2604 BONE
 [2] SSO SS2613 SOFT YELLOW	 [2] SSO SS2614 SOFT PINK	
 [2] SSO SS2601 White	 [2] SSO SS2705 SOFT GREEN	

Instructions for using the graph.

GAUGE= 5 STS = 1"
4 ROWS = 1"

I USED SIZE "H" AFGHAN HOOK, USE WHATEVER SIZE GIVES YOU THE CORRECT GAUGE. CAN BE DONE IN AFGHAN STITCH OR SINGLE CROCHET.

EACH SQUARE ON THE GRAPH REPRESENTS 1 STITCH. FOR SINGLE CROCHET READ THE CHART FROM RIGHT TO LEFT, AND THEN LEFT TO RIGHT. IF USING AFGHAN STITCH ALWAYS READ FROM THE RIGHT.

TO START: CHAIN ONE MORE STITCH THAN GRAPH.

YOU WILL NEED TO ADD STITCHES TO MAKE THE PIECE WIDER, AND ADD ROWS TO MAKE IT LONGER. THE DESIGN IS CENTERED, SO ADD STITCHES EVENLY TO BOTH SIDES.

ESTIMATED YARN NEEDED:

BLACK ; 4 OUNCES
BONE: 1 OUNCES
SOFT YELLOW: 2 OUNCES
SOFT GREEN/BACKGROUND: 14 OUNCES
SOFT BLUE: 10 OUNCES
SOFT PINK: 1 OUNCES
WHITE: 2 OUNCES