

10

20

30

40

50

60

70

80

90

10

20

30

40

50

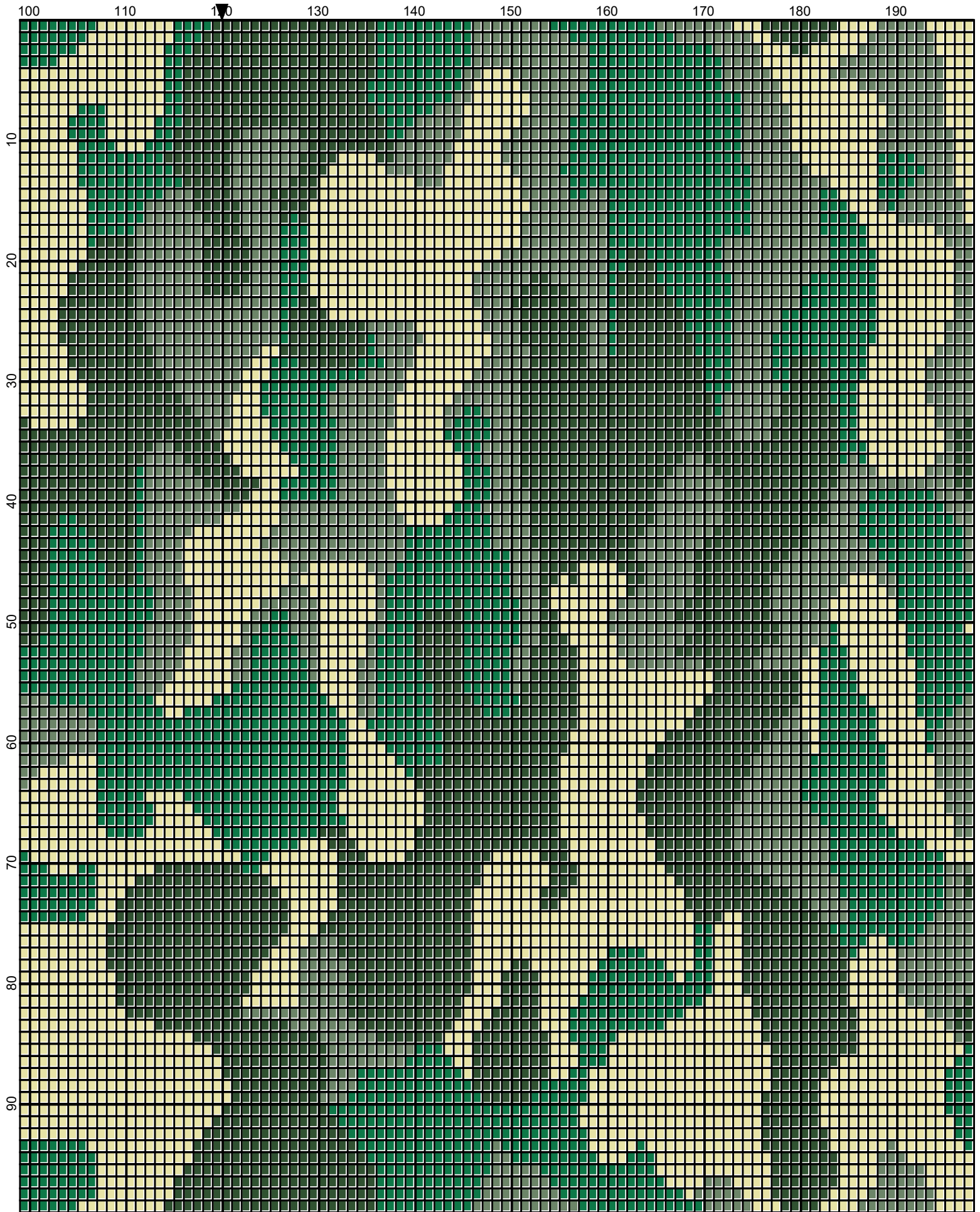
60

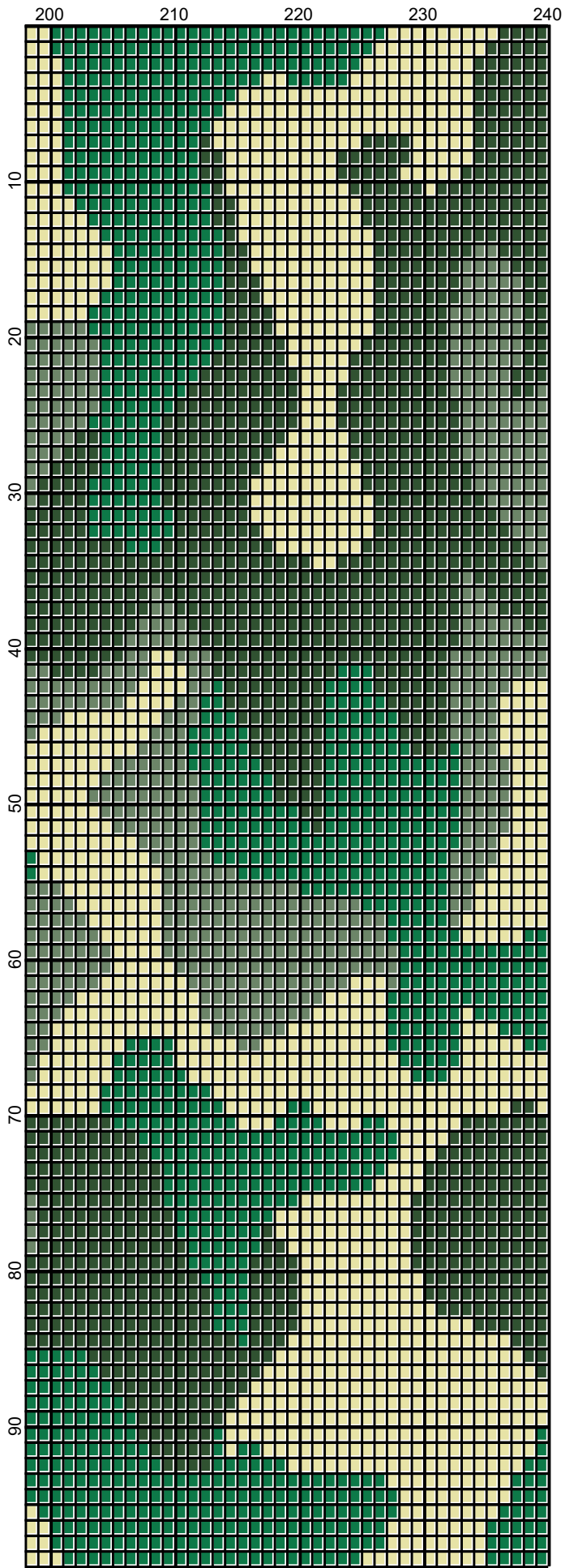
70

80

90







August 2018

10

20

30

40

50

60

70

80

90

100

110

120

130

140

150

160

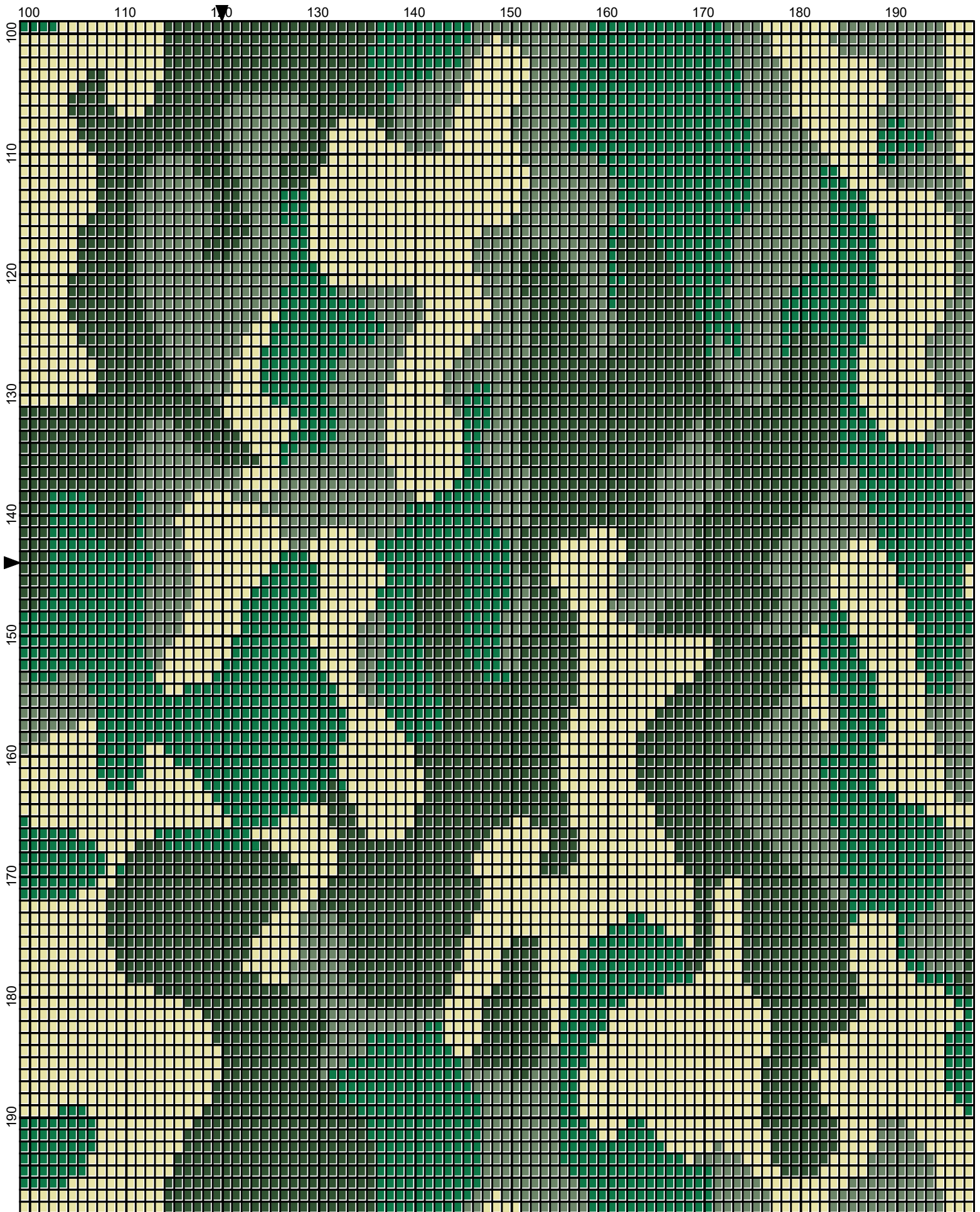
170

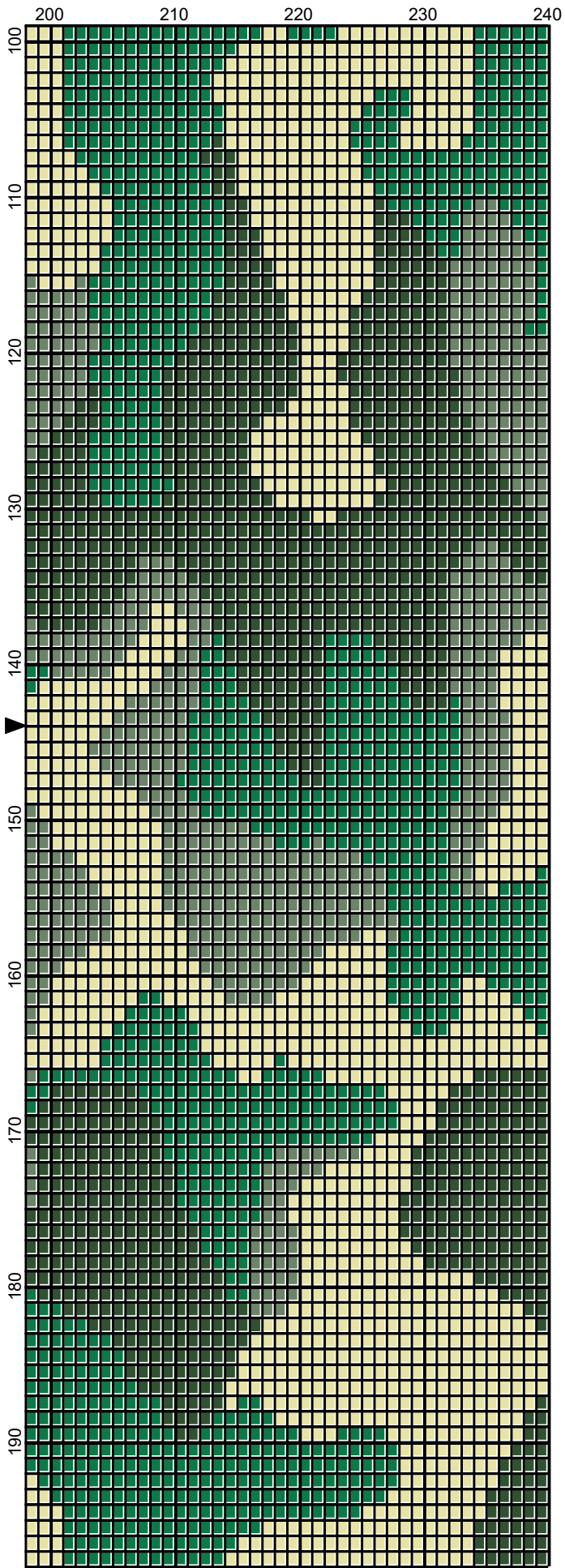
180

190

August 2018



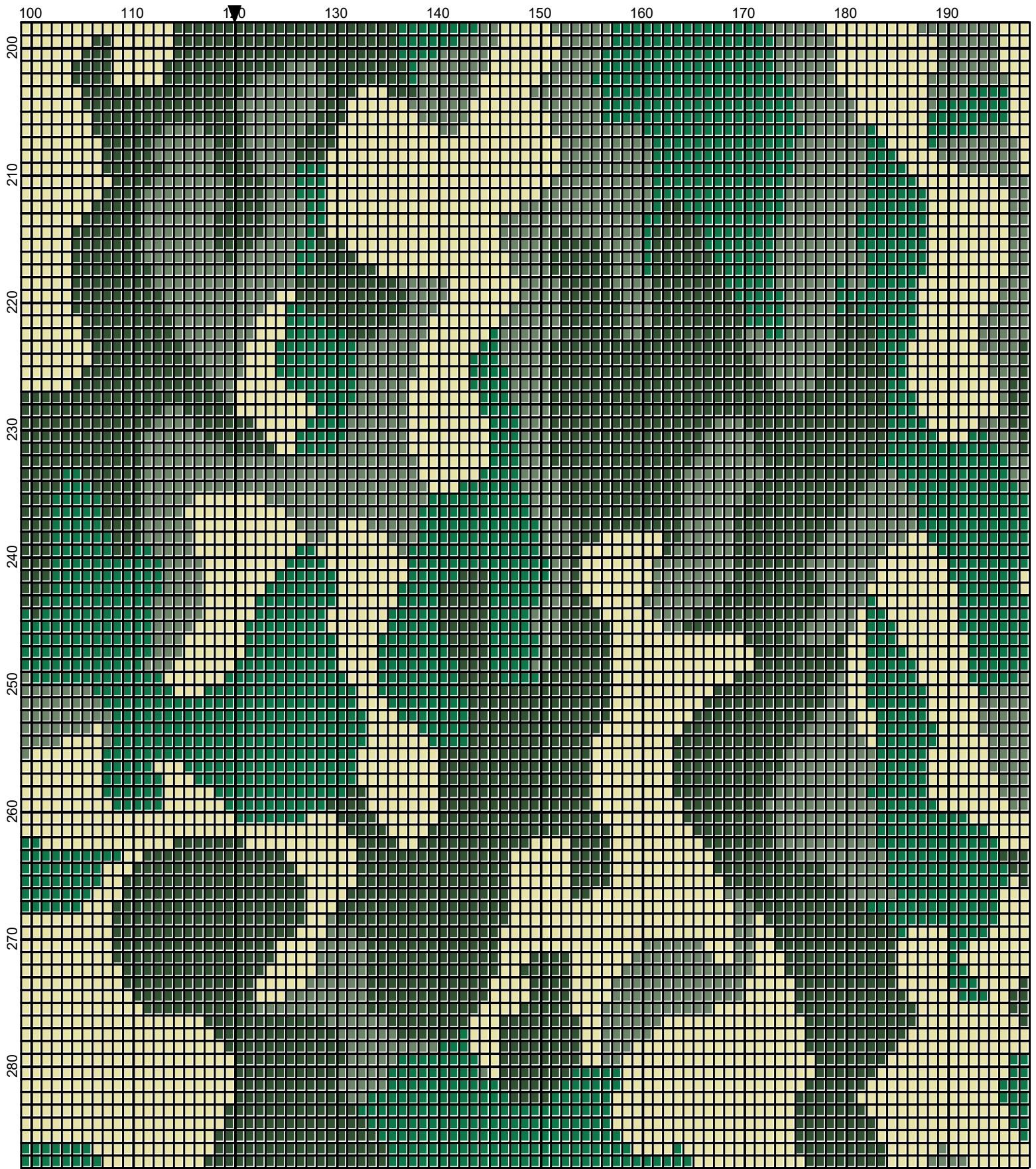




August 2018

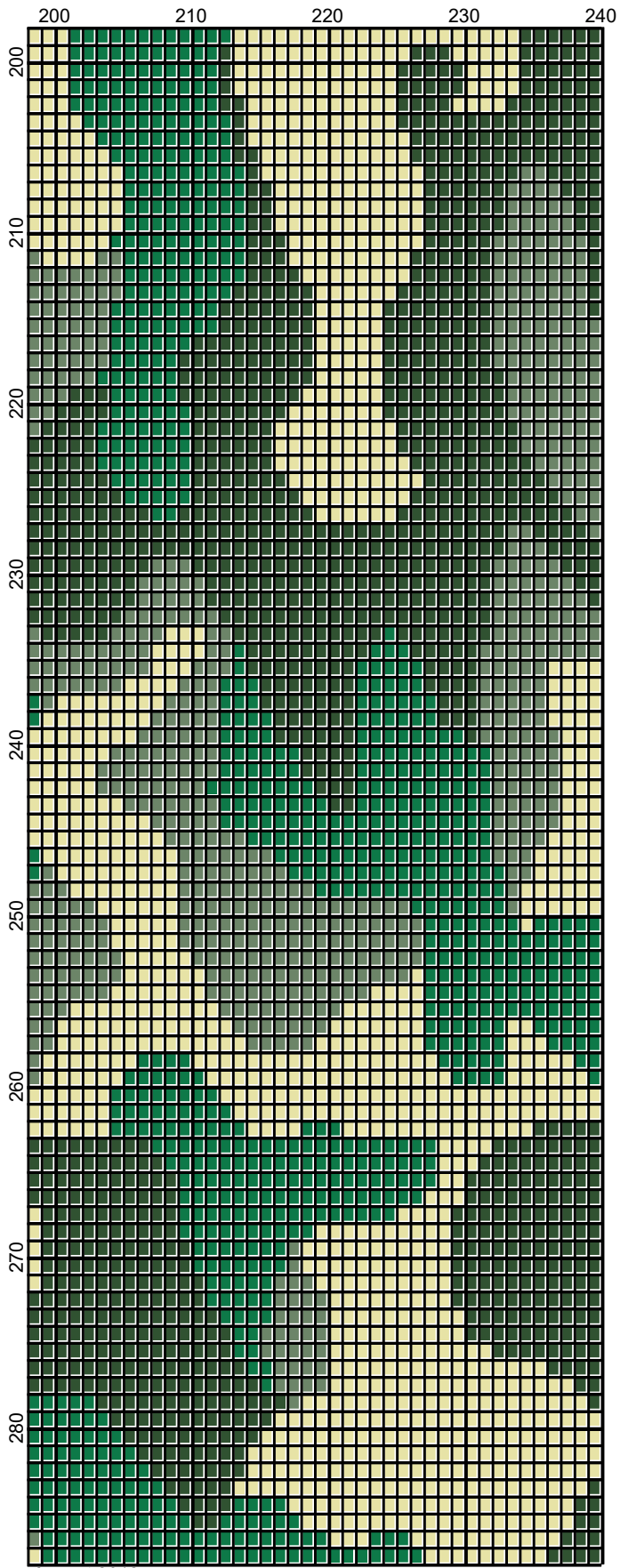


August 2018



August 2018





August 2018

# green\_camo\_240x280

---

**Author:** Donna Hammell  
**Company:** Donna's Crochet Shoppe  
**Copyright:** August 2018  
**Website:** www.donnascrochetshoppe.com  
**Grid Size:** 240W x 288H  
**Design Area:** 24.00" x 36.00" (240 x 288 stitches)

## Legend:

 [2] RHS 368 Paddy Green    [2] RHS 389 Hunter Green    [2] RHS 320 Cornmeal    [2] RHS 631 Lt Sage

Instructions for using the graph.

GAUGE= 5 STS = 1"  
4 ROWS = 1"

I USED SIZE "H" AFGHAN HOOK, USE WHATEVER SIZE GIVES YOU THE CORRECT GAUGE. CAN BE DONE IN AFGHAN STITCH OR SINGLE CROCHET.

EACH SQUARE ON THE GRAPH REPRESENTS 1 STITCH. FOR SINGLE CROCHET READ THE CHART FROM RIGHT TO LEFT, AND THEN LEFT TO RIGHT. IF USING AFGHAN STITCH ALWAYS READ FROM THE RIGHT.

TO START: CHAIN ONE MORE STITCH THAN GRAPH.

YOU WILL NEED TO ADD STITCHES TO MAKE THE PIECE WIDER, AND ADD ROWS TO MAKE IT LONGER. THE DESIGN IS CENTERED, SO ADD STITCHES EVENLY TO BOTH SIDES.

ESTIMATED YARN NEEDED:  
PADDY GREEN: 22 OUNCES  
HUNTER GREEN: 26 OUNCES  
CORNMEAL: 26 OUNCES  
LT SAGE : 18 OUNCES