

September 2021

Legend:

■ RHS-312 □ RHS-316 □ RHS-313

fleur_de_lis_160x180

Author: Donna Hammell
Copyright: September 2021
Website: www.donnascrochetshoppe.com
Grid Size: 160W x 180H
Design Area: 16.00" x 22.50" (160 x 180 stitches)

Legend:

■ [2] RHS 312 Black □ [2] RHS 316 Soft White □ [2] RHS 313 Aran

Instructions for using the graph.

GAUGE= 5 STS = 1"
4 ROWS = 1"

I USED SIZE "H" AFGHAN HOOK,USE WHATEVER SIZE GIVES YOU THE CORRECT GAUGE. CAN BE DONE IN AFGHAN STITCH OR SINGLE CROCHET.

EACH SQUARE ON THE GRAPH REPRESENTS 1 STITCH. FOR SINGLE CROCHET READ THE CHART FROM RIGHT TO LEFT, AND THEN LEFT TO RIGHT. IF USING AFGHAN STITCH ALWAYS READ FROM THE RIGHT.

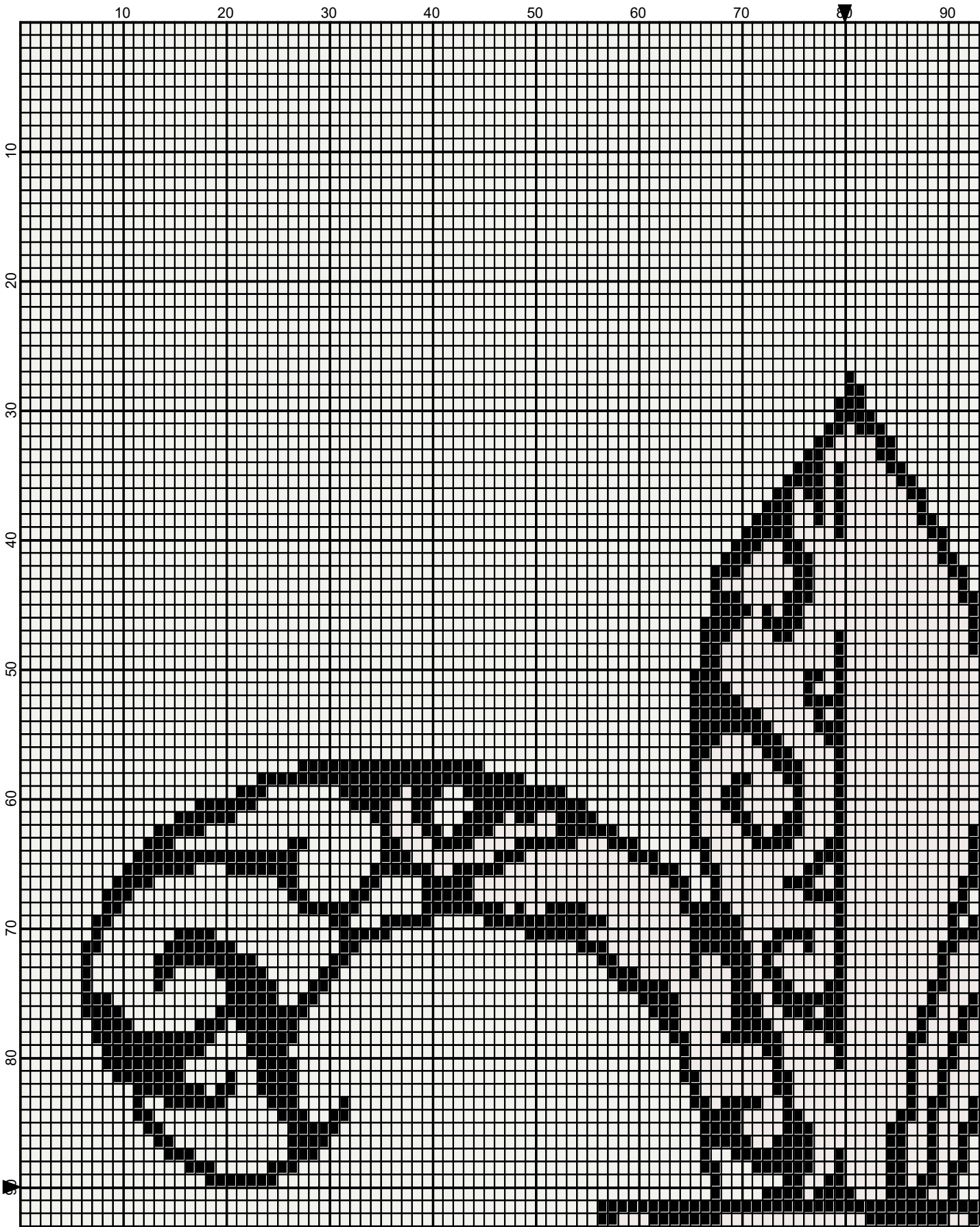
TO START: CHAIN ONE MORE STITCH THAN GRAPH.

ESTIMATED RED HEART YARN NEEDED:

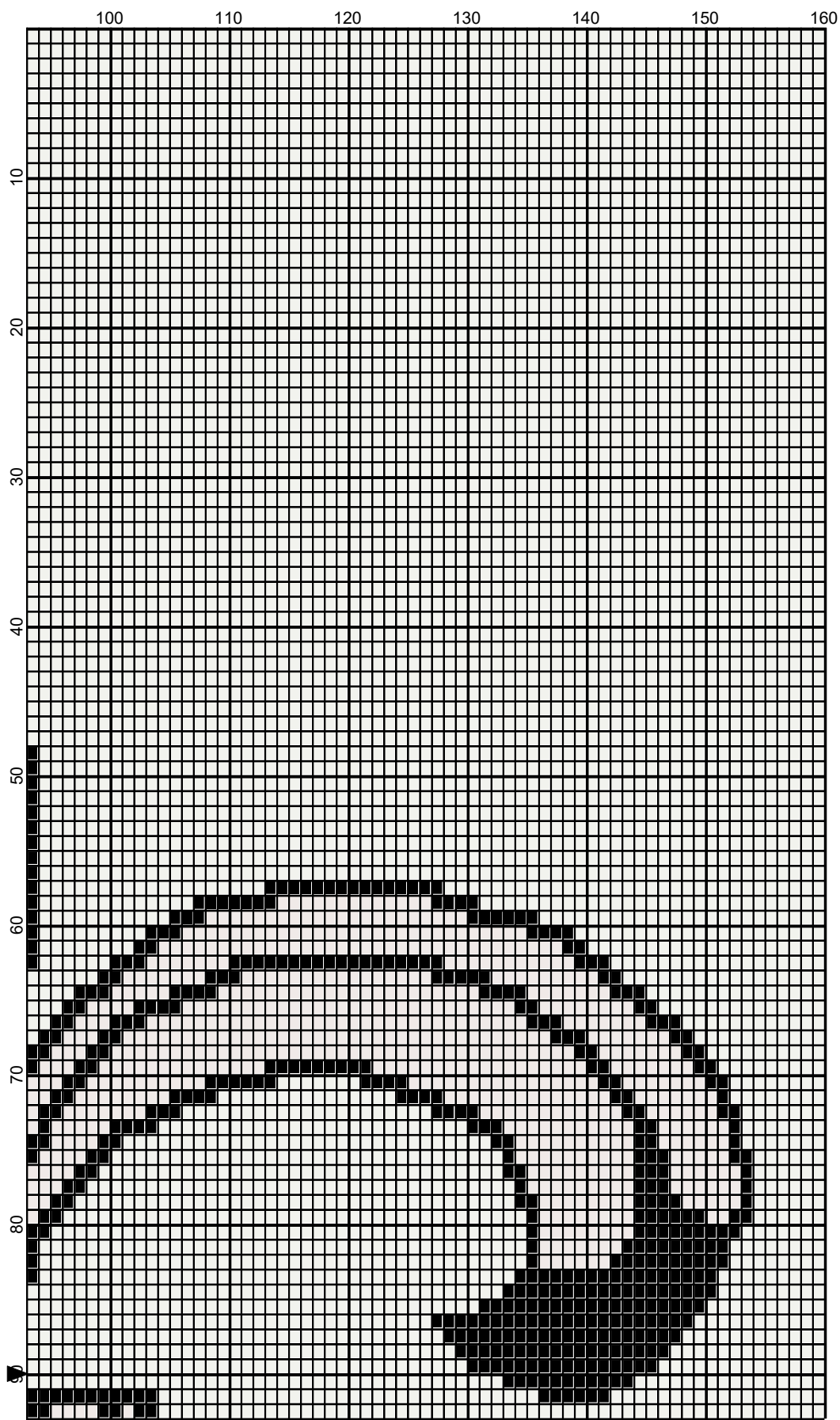
BLACK ;4 OUNCES

OFF WHITE:5 OUNCES

BACKGROUND: 30 OUNCES



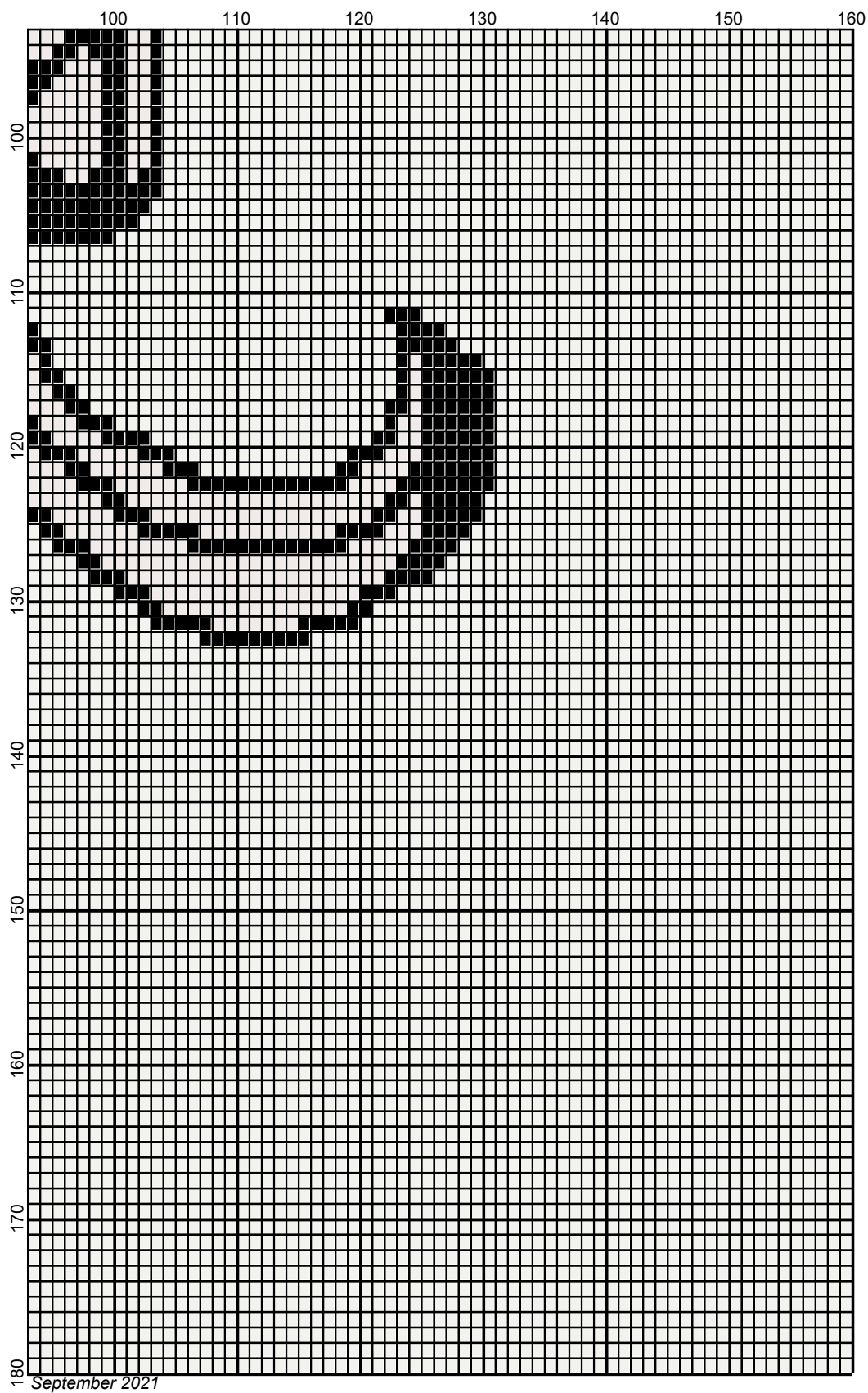
September 2021



September 2021



Legend:



■ RHS-312 □ RHS-316 □ RHS-313