

Legend:
RHS-316 RHS-390

fender_160x180

Author: Donna Hammell
Copyright: March 2022
Website: www.donnascrochetshoppe.com
Grid Size: 160W x 180H
Design Area: 16.00" x 22.50" (160 x 180 stitches)

Legend:

□ [2] RHS 316 Soft White ■ [2] RHS 390 Hot Red

Instructions for using the graph.

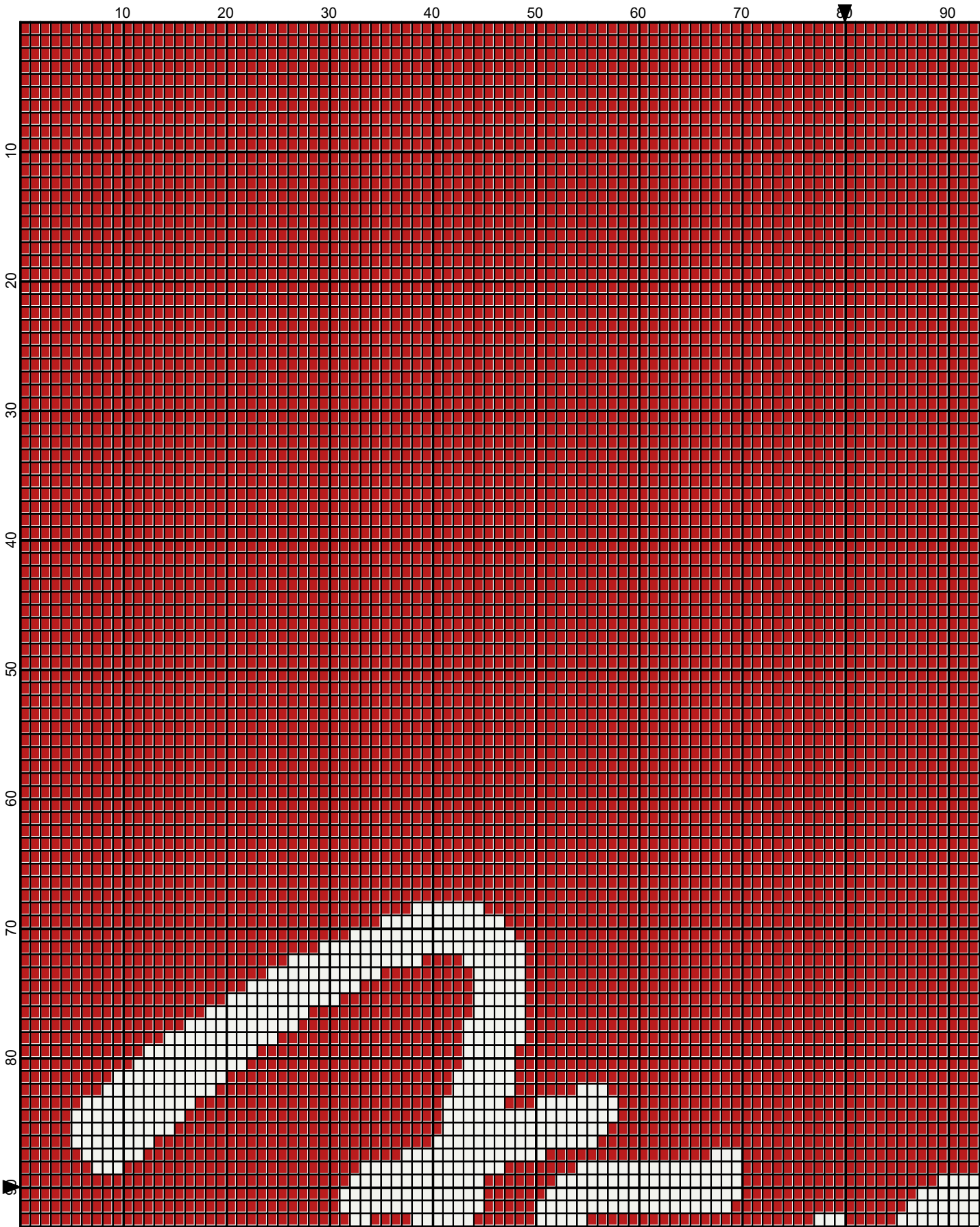
GAUGE= 5 STS = 1"
4 ROWS = 1"

I USED SIZE "H" AFGHAN HOOK,USE WHATEVER SIZE GIVES YOU THE CORRECT GAUGE. CAN BE DONE IN AFGHAN STITCH OR SINGLE CROCHET.

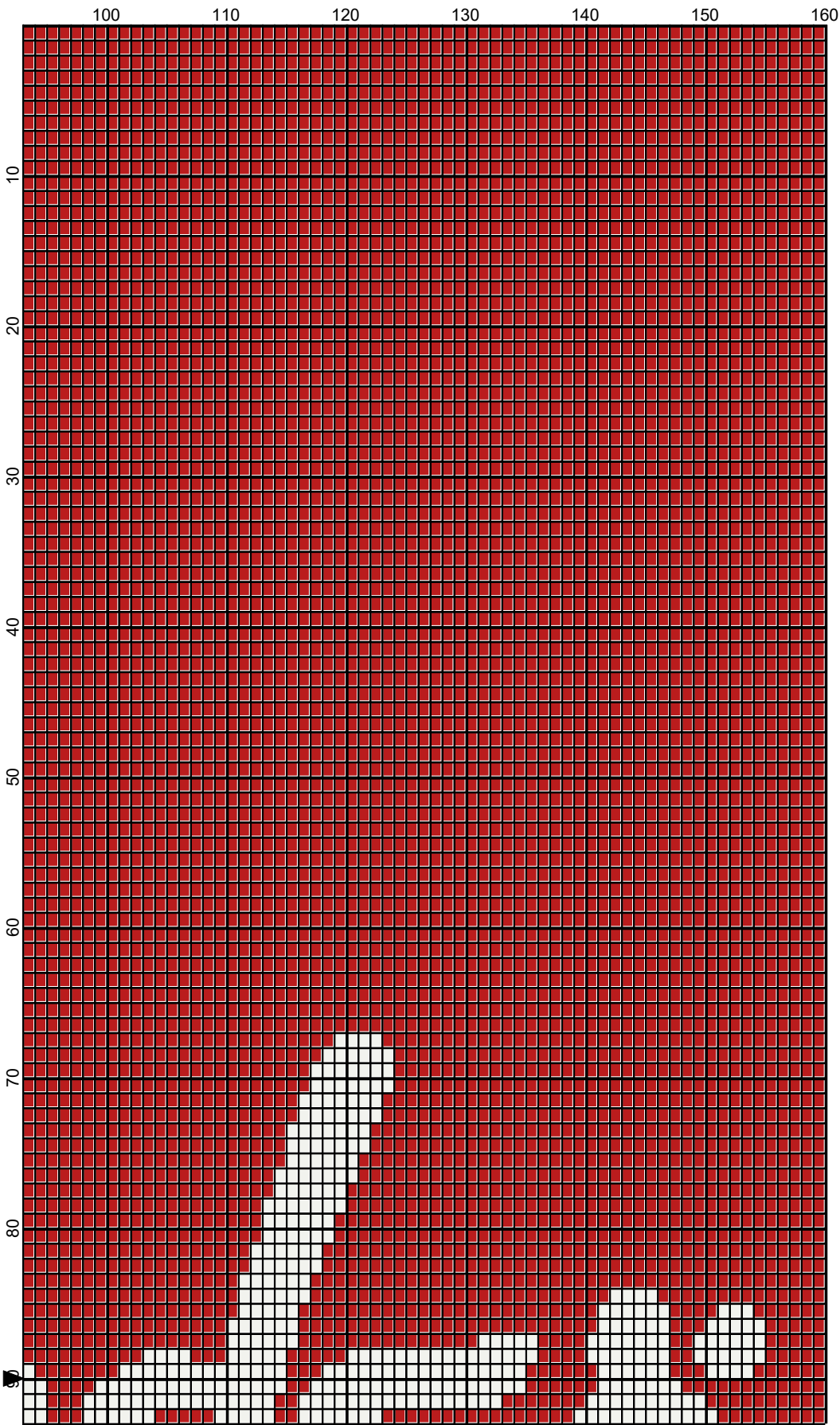
EACH SQUARE ON THE GRAPH REPRESENTS 1 STITCH. FOR SINGLE CROCHET READ THE CHART FROM RIGHT TO LEFT, AND THEN LEFT TO RIGHT. IF USING AFGHAN STITCH ALWAYS READ FROM THE RIGHT.

TO START: CHAIN ONE MORE STITCH THAN GRAPH

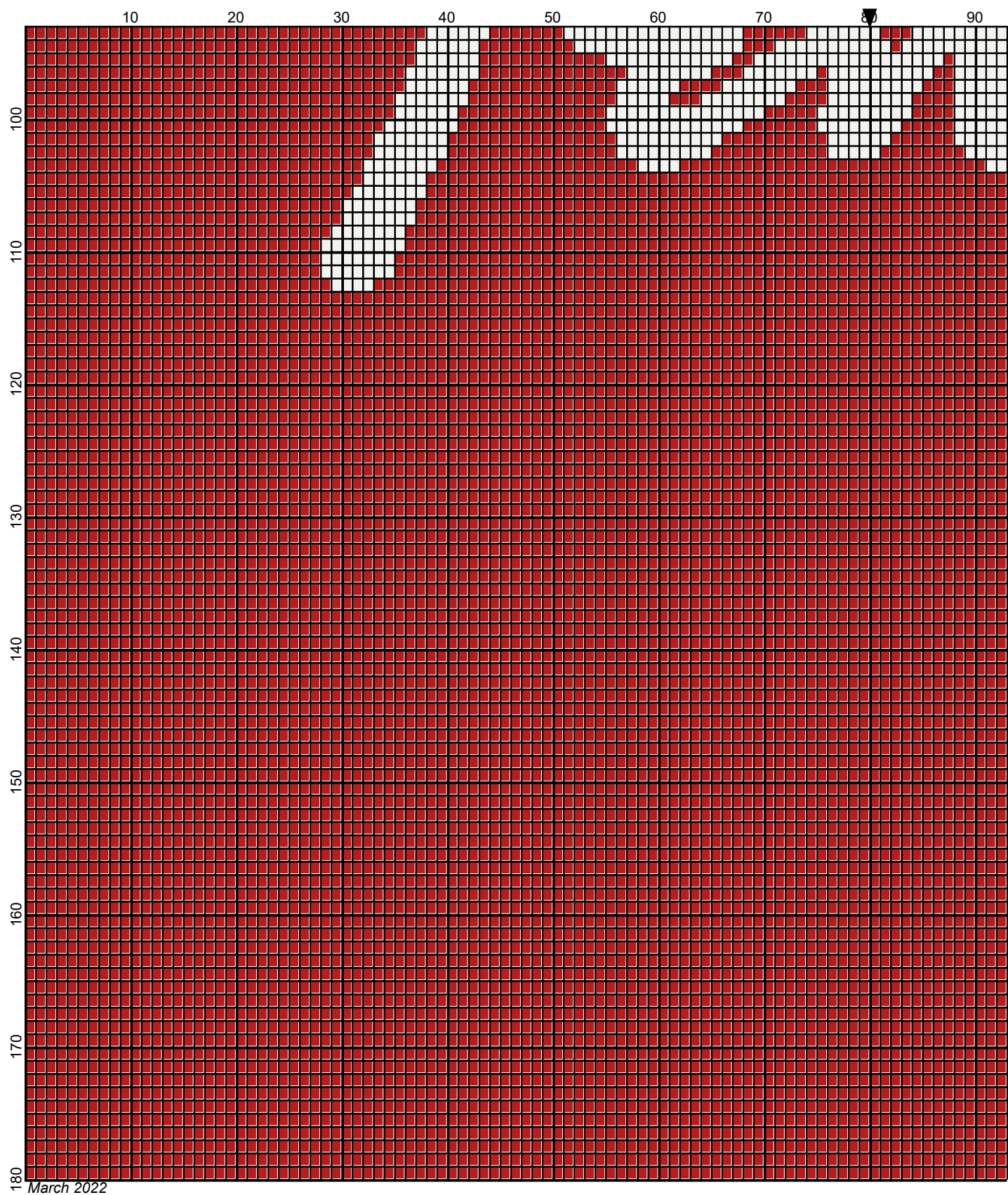
ESTIMATED YARN
RED: 36 OUNCES
WHITE: 3 OUNCES



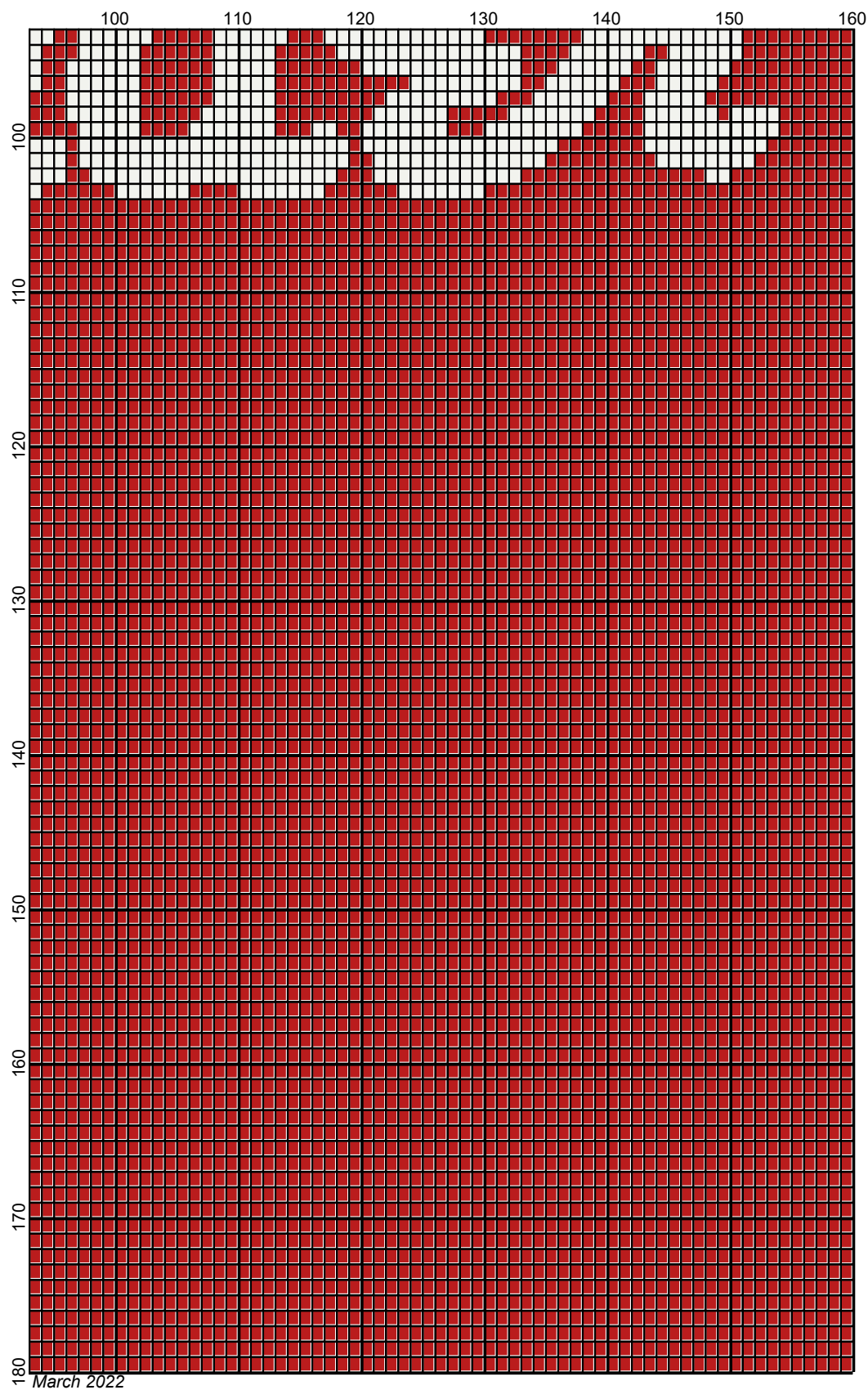
March 2022



March 2022



Legend:



□ RHS-316 ■ RHS-390