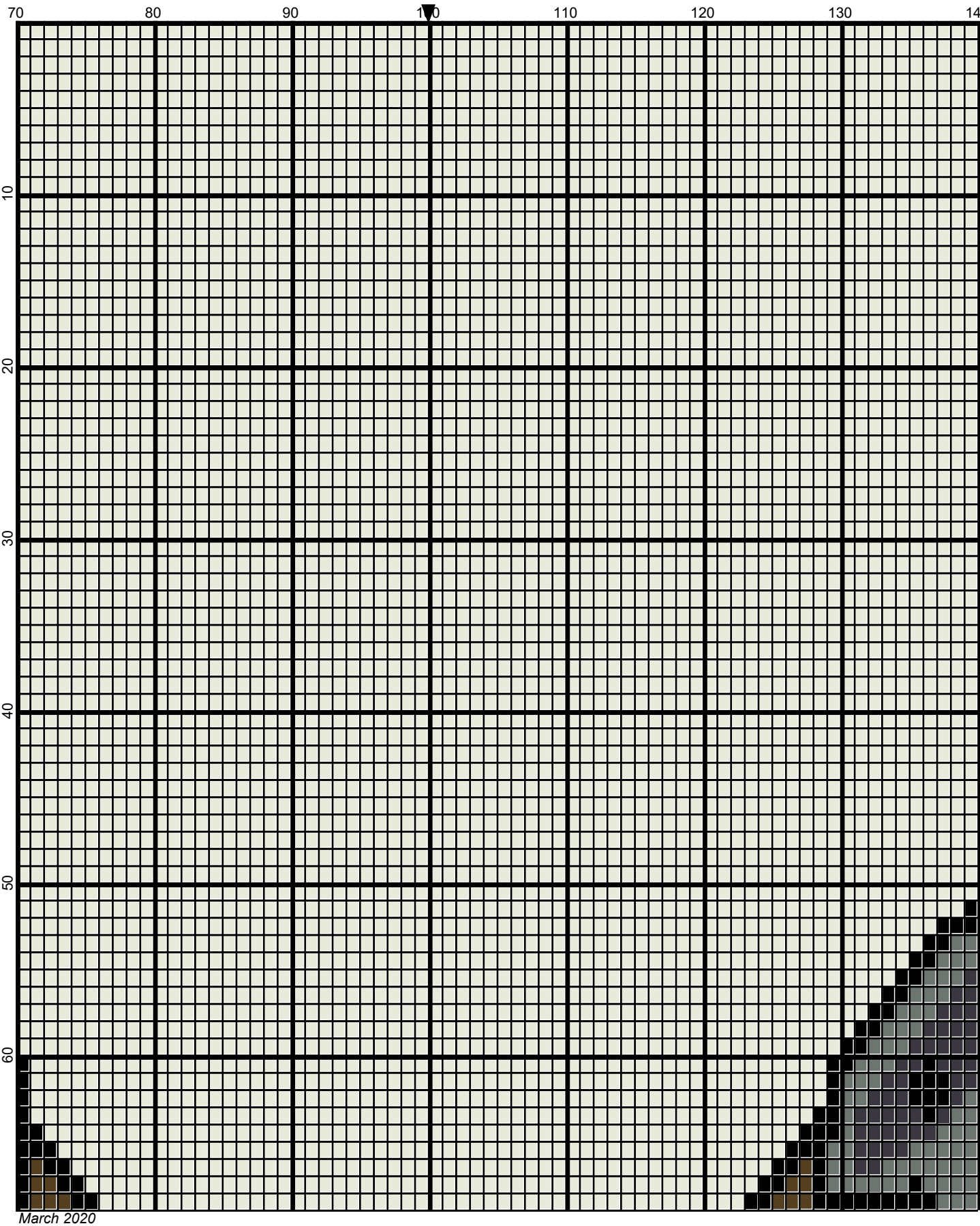
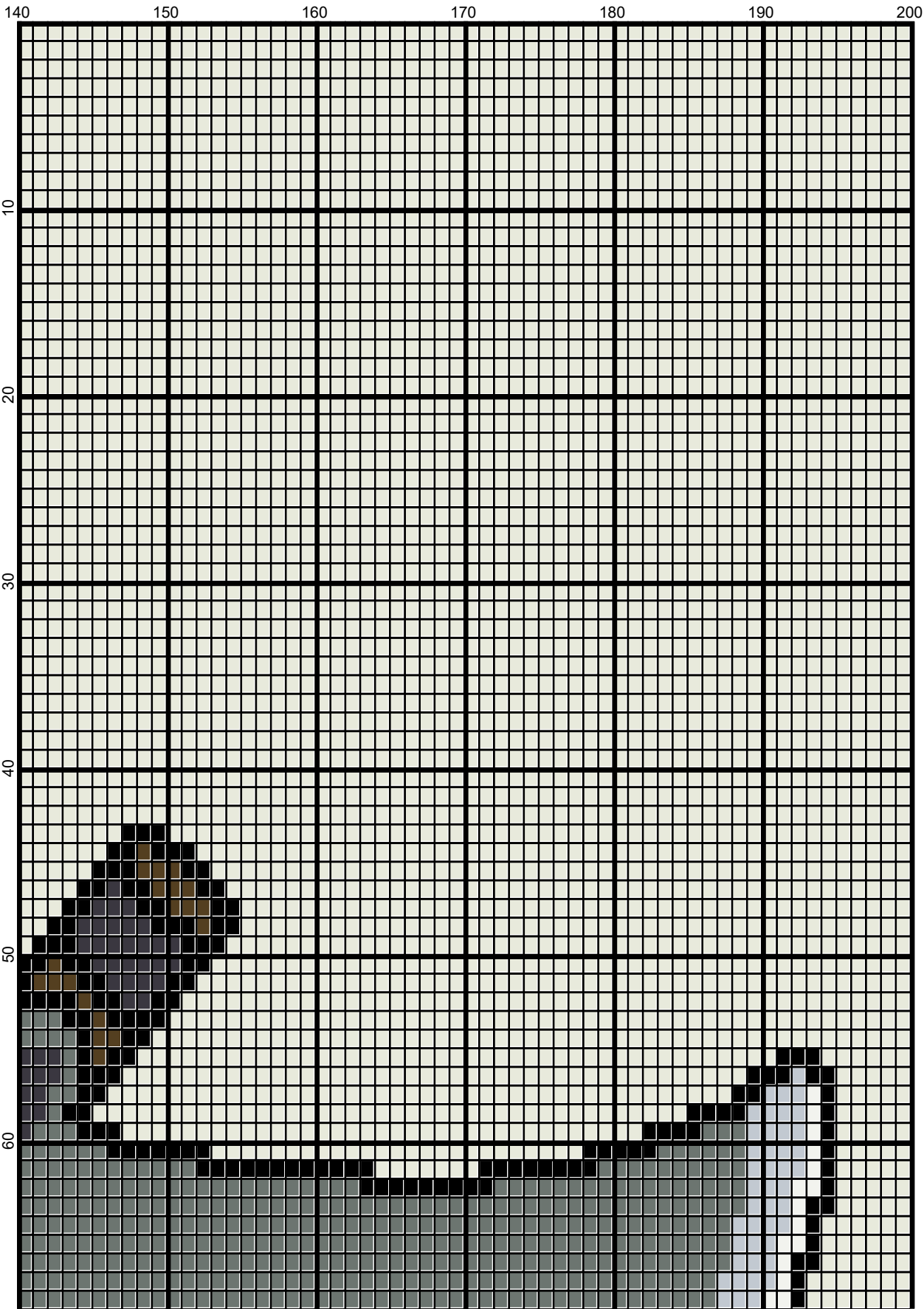
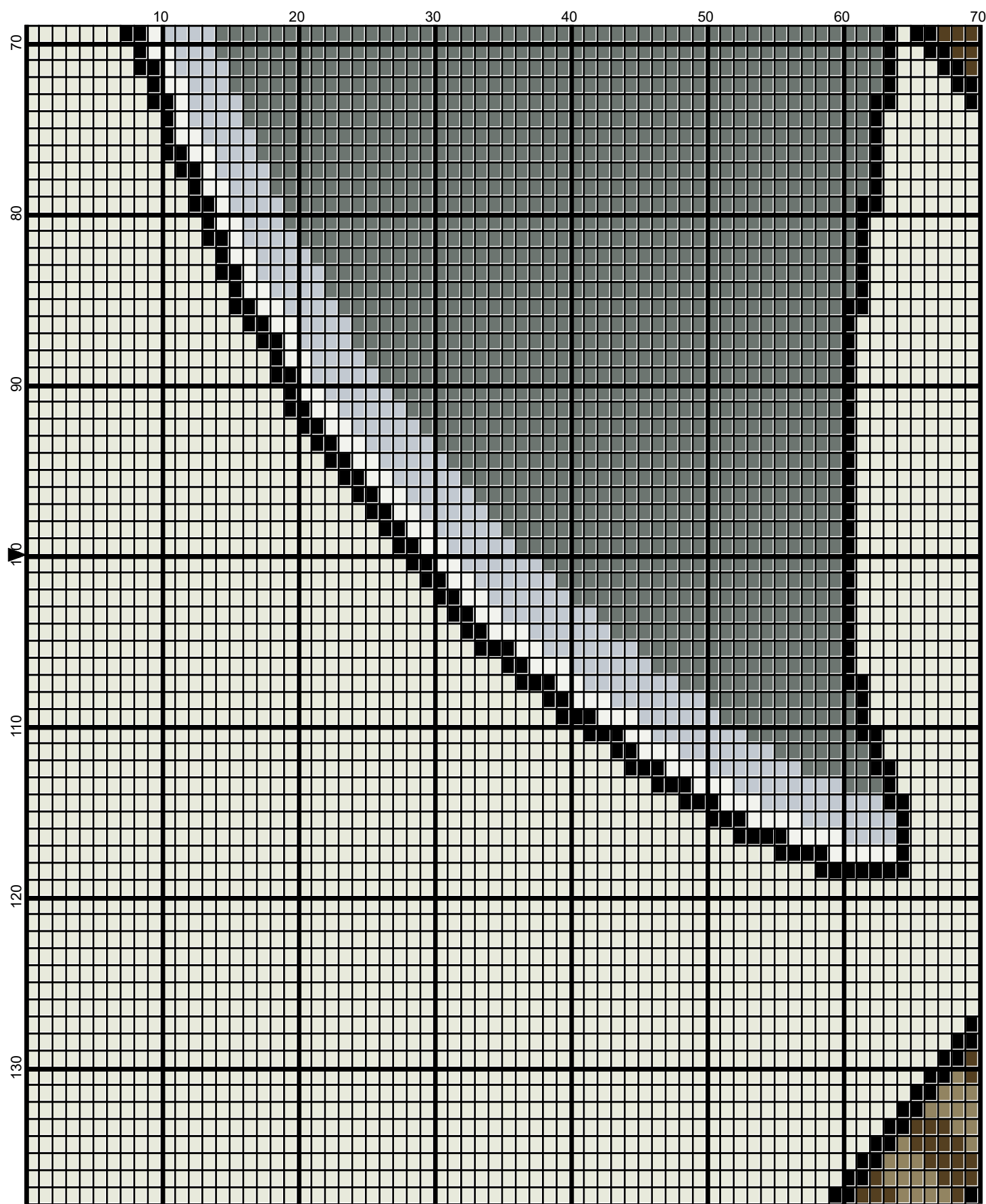


March 2020

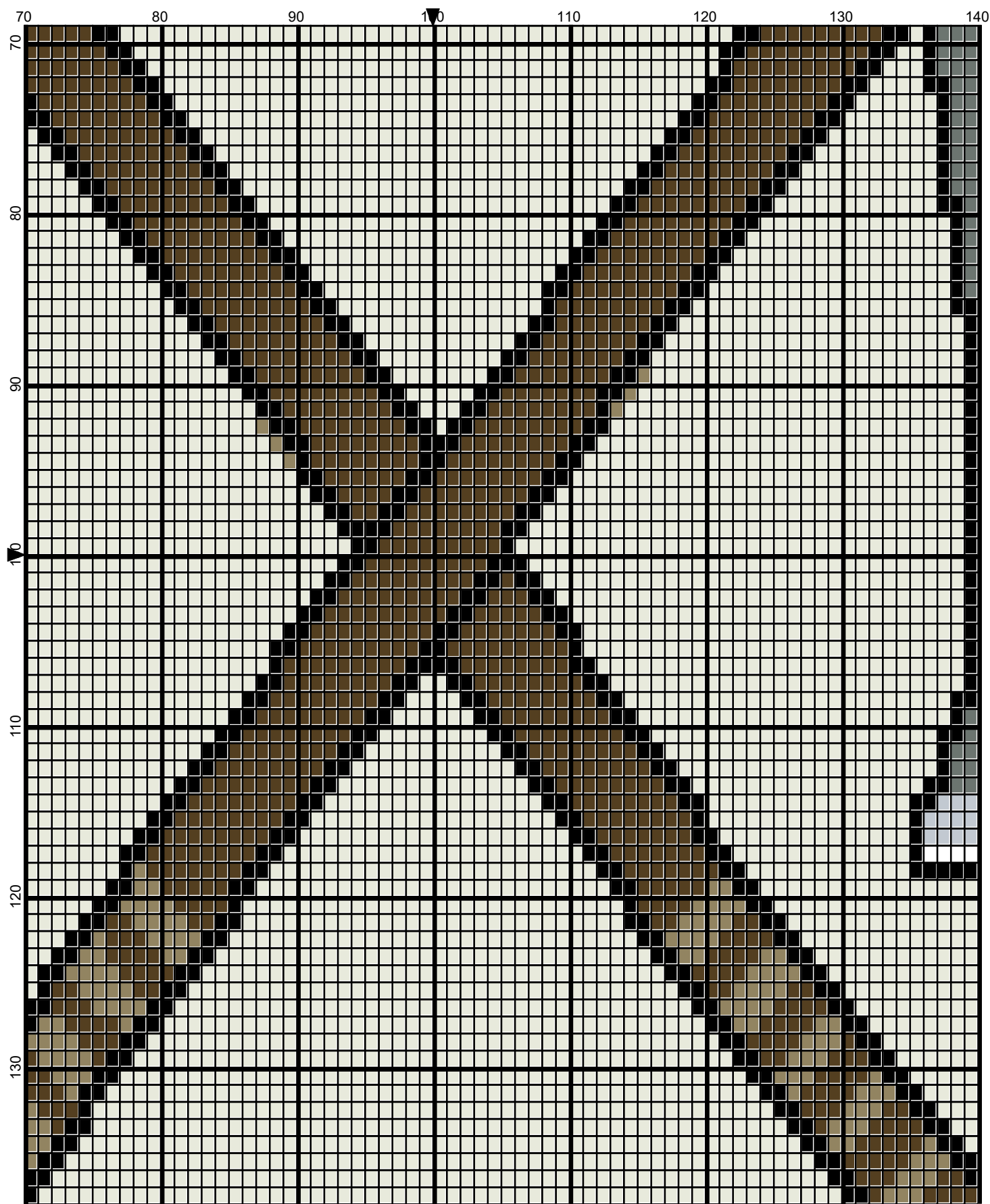




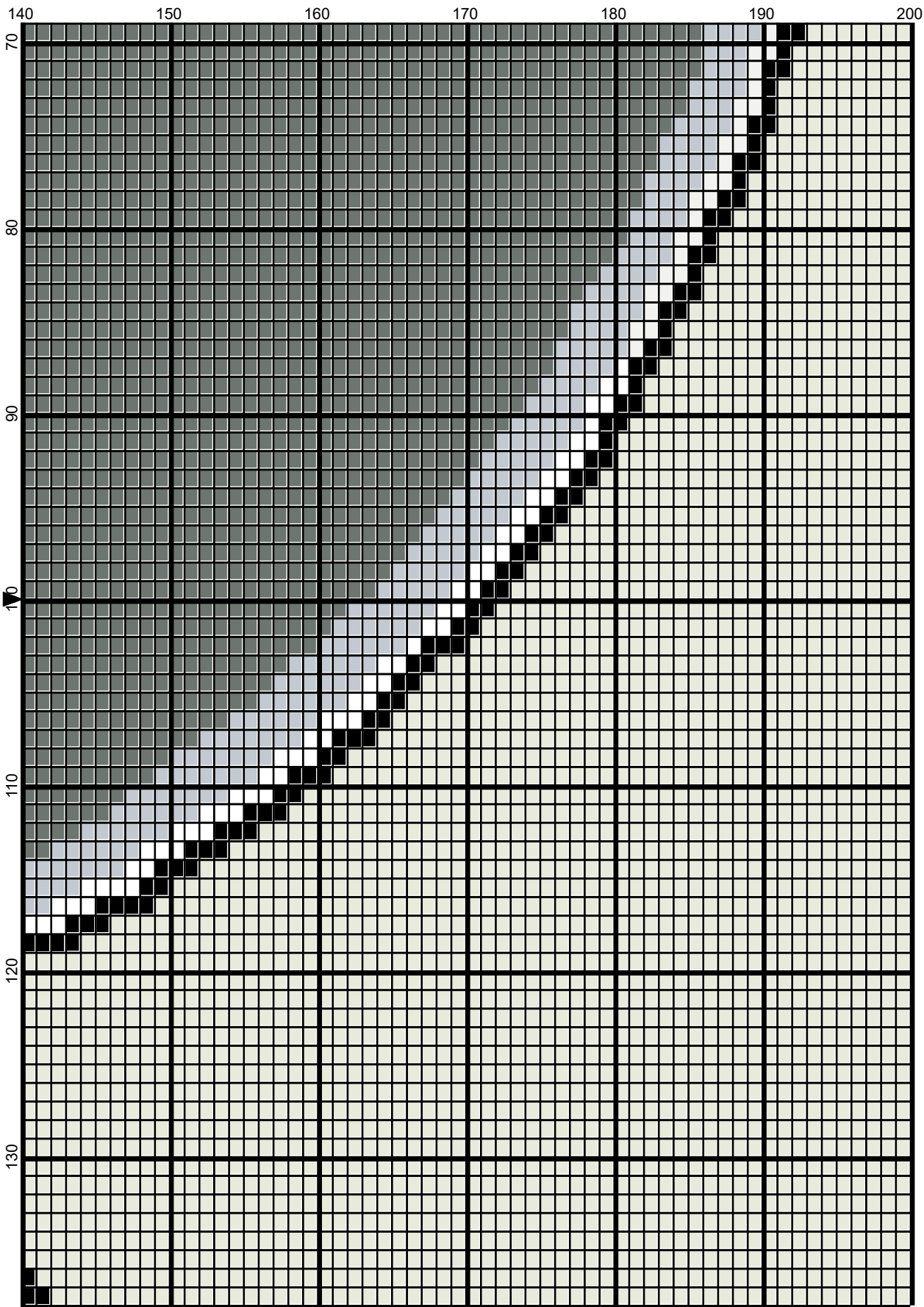
March 2020



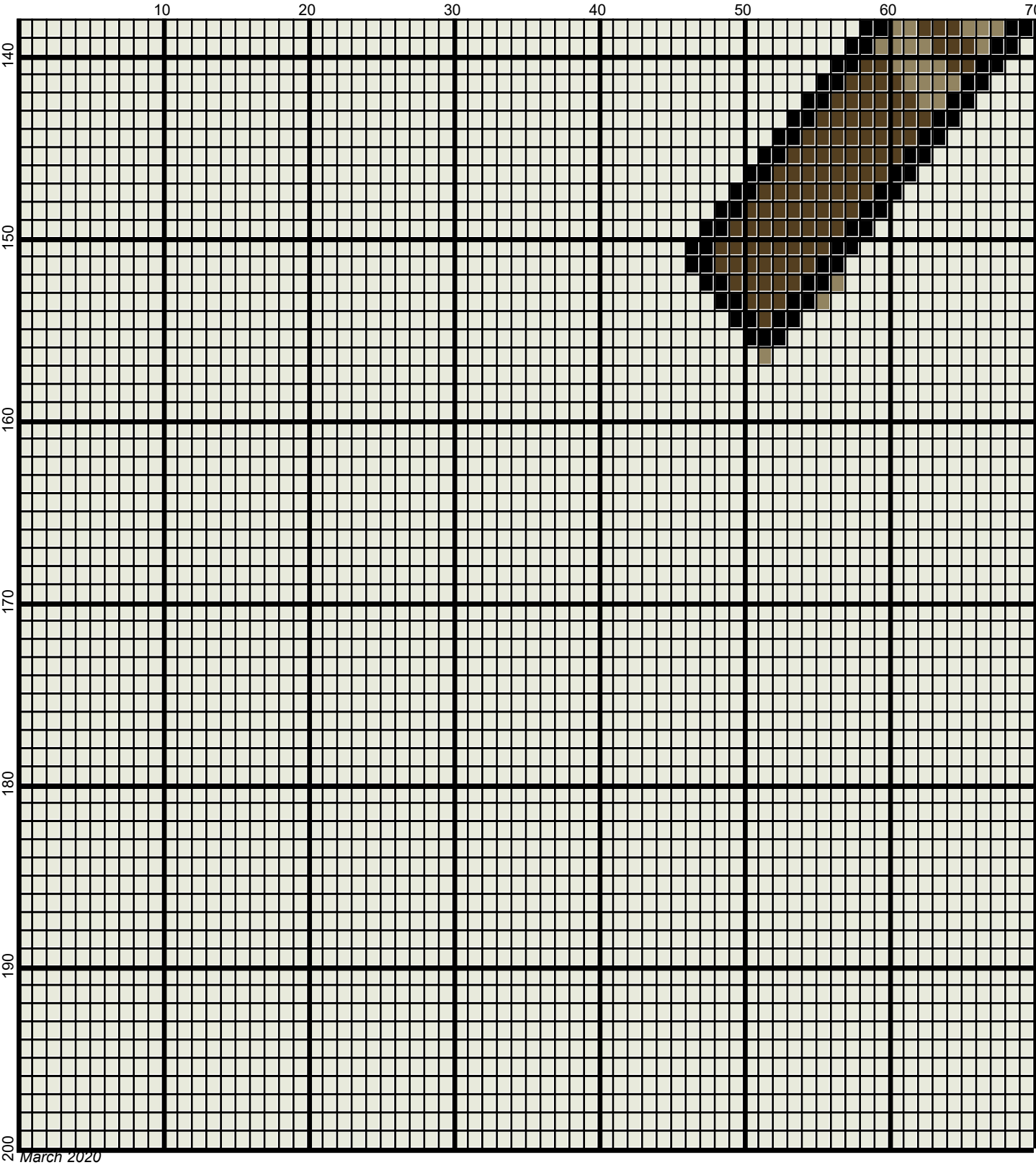
March 2020



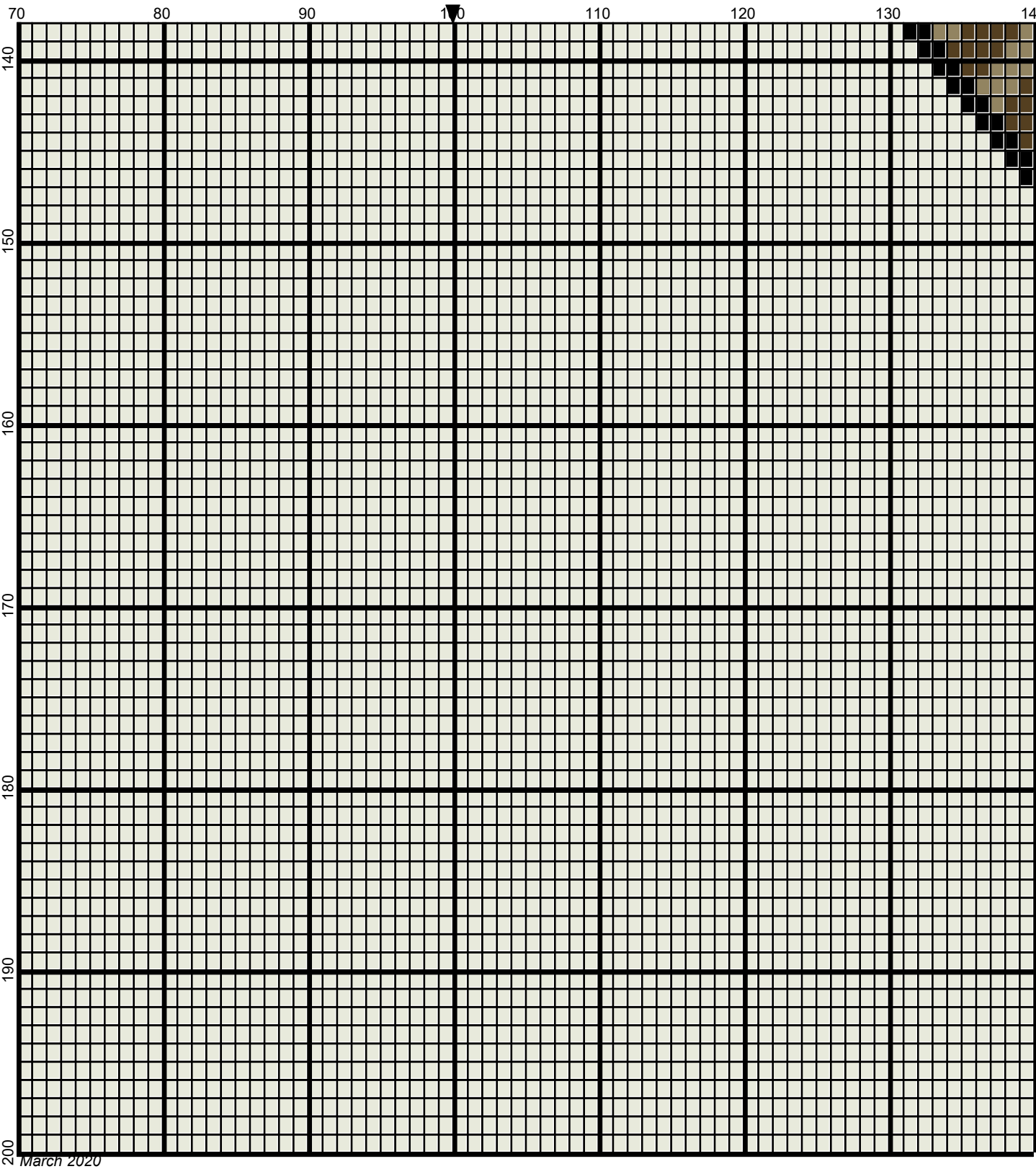
March 2020

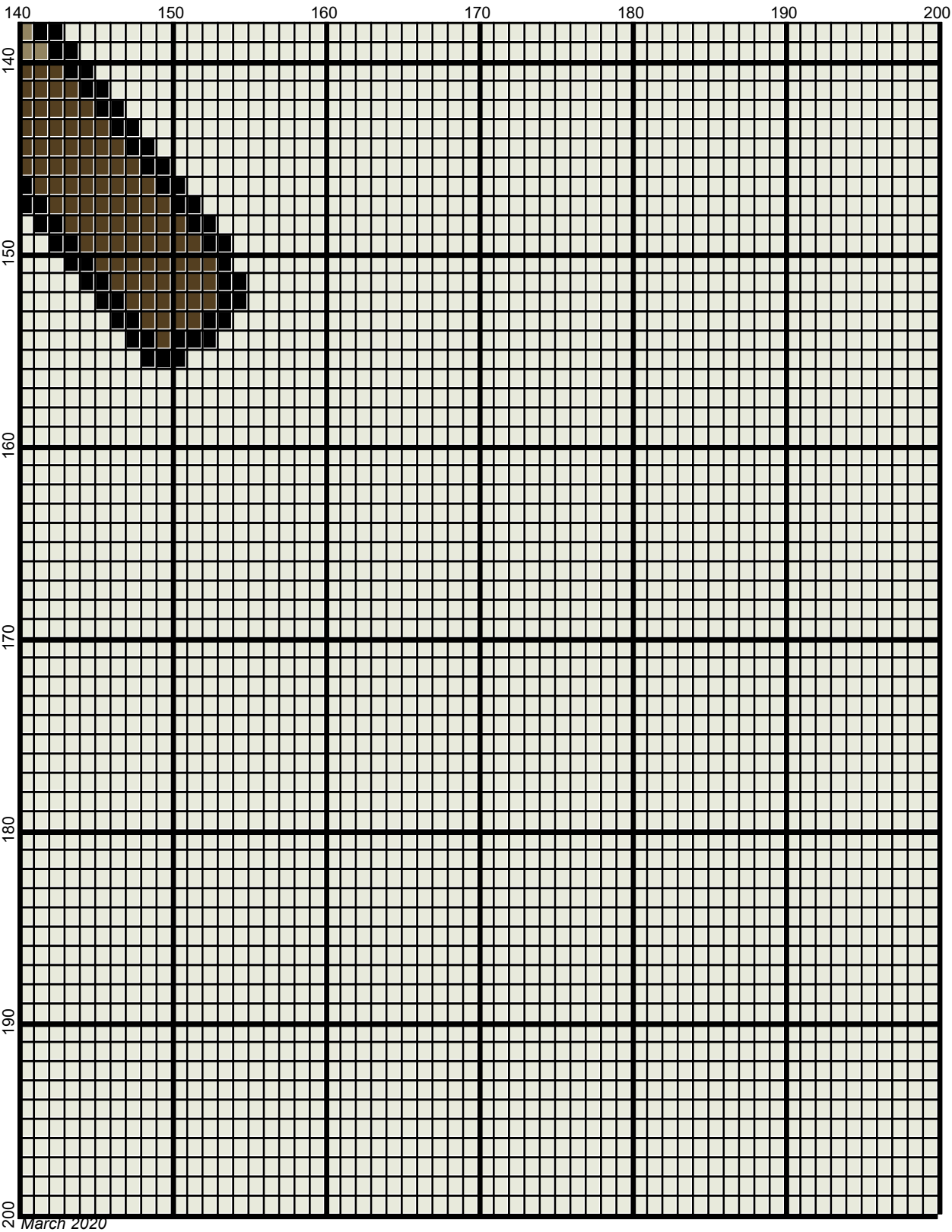


March 2020



March 2020













crossed_axes_200x200

Author: Donna Hammell
Copyright: March 2020
Website: www.donnascrochetshoppe.com
Grid Size: 200W x 200H
Design Area: 20.00" x 25.00" (200 x 200 stitches)

Legend:

 [2] RHS	360 Cafe Latte	 [2] RHS	3950 Charcoal	 [2] RHC	0339 Mid Brown
 [2] RHS	312 Black	 [2] RHS	341 Light Gray	 [2] RHC	003 Off White
 [2] RHS	RH400 Gray Heather	 [2] RHS	316 Soft White		

Instructions for using the graph.

GAUGE= 5 STS = 1"
4 ROWS = 1"

I USED SIZE "H" AFGHAN HOOK,USE WHATEVER SIZE GIVES YOU THE CORRECT GAUGE. CAN BE DONE IN AFGHAN STITCH OR SINGLE CROCHET.

EACH SQUARE ON THE GRAPH REPRESENTS 1 STITCH. FOR SINGLE CROCHET READ THE CHART FROM RIGHT TO LEFT, AND THEN LEFT TO RIGHT. IF USING AFGHAN STITCH ALWAYS READ FROM THE RIGHT.

TO START: CHAIN ONE MORE STITCH THAN GRAPH.

IF YOU NEED TO ADD STITCHES TO MAKE THE PIECE WIDER, AND ADD ROWS TO MAKE IT LONGER. THE DESIGN IS CENTERED, SO ADD STITCHES EVENLY TO BOTH SIDES.

ESTIMATED RED HEART YARN NEEDED:

BLACK:2 OUNCES

SOFT WHITE: 1 OUNCE

CHARCOAL/DARK GRAY:SMALL AMT

LT GRAY: 1 OUNCE

BROWN: 2 OUNCES

BACKGROUND: 42 OUNCES

CAFE LATTE: SMALL AMT

GRAY HEATHER: 6 OUNCES