

Legend:  
■ RHC-312 □ RHC-001

# bowning\_love\_200x220

---

**Author:** Donna Hammell  
**Copyright:** October 2025  
**Website:** [www.donnascrochetshoppe.com](http://www.donnascrochetshoppe.com)  
**Grid Size:** 200W x 220H  
**Design Area:** 20.00" x 27.50" (200 x 220 stitches)

## Legend:

■ [2] RHC 312 Black      □ [2] RHC 001 White

Instructions for using the graph.

GAUGE= 5 STS = 1"  
4 ROWS = 1"

I USED SIZE "H" AFGHAN HOOK,USE WHATEVER SIZE GIVES YOU THE CORRECT GAUGE. CAN BE DONE IN AFGHAN STITCH OR SINGLE CROCHET.

EACH SQUARE ON THE GRAPH REPRESENTS 1 STITCH. FOR SINGLE CROCHET READ THE CHART FROM RIGHT TO LEFT, AND THEN LEFT TO RIGHT. IF USING AFGHAN STITCH ALWAYS READ FROM THE RIGHT.

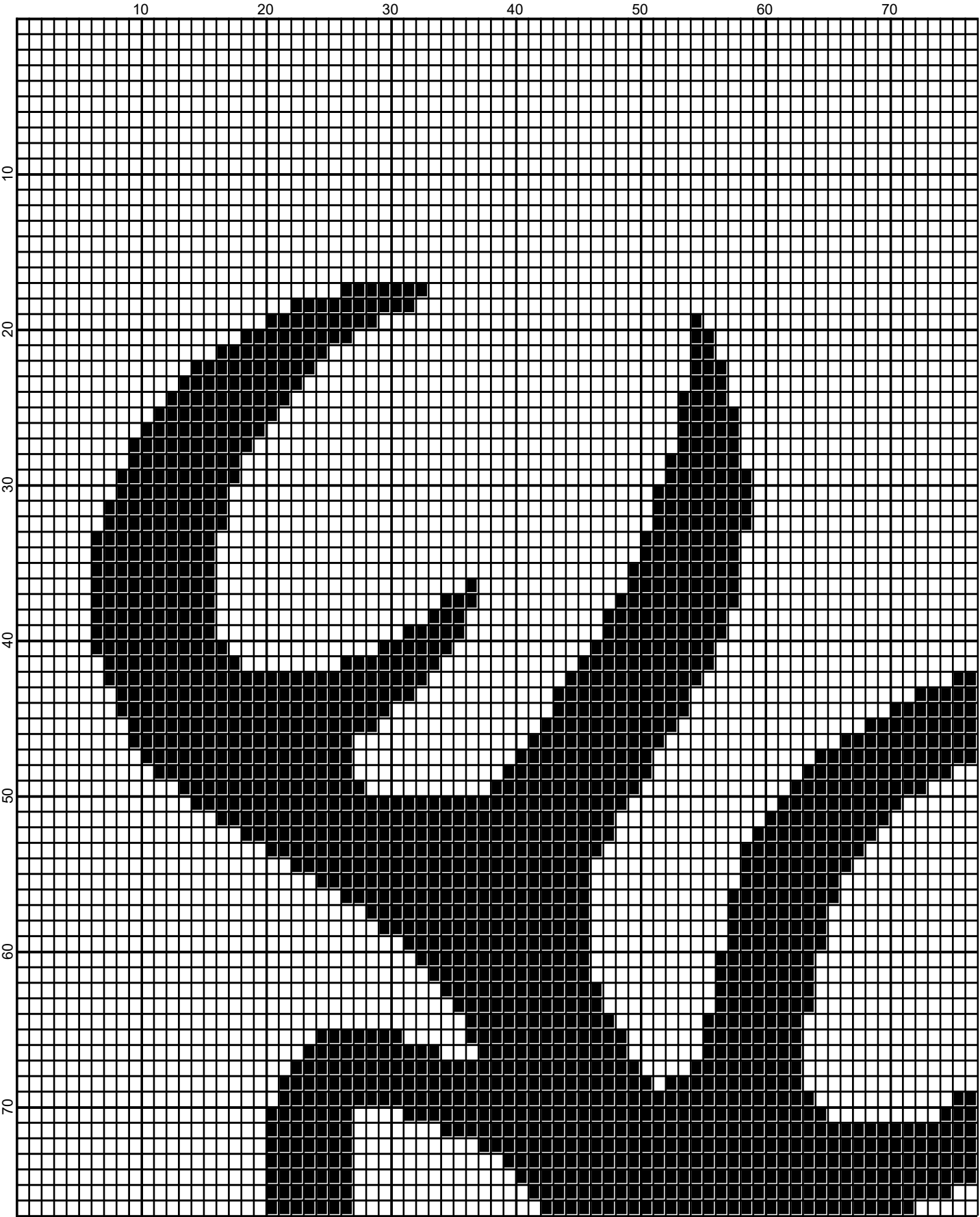
TO START: CHAIN ONE MORE STITCH THAN GRAPH.

YOU WILL NEED TO ADD STITCHES TO MAKE THE PIECE WIDER, AND ADD ROWS TO MAKE IT LONGER. THE DESIGN IS CENTERED, SO ADD STITCHES EVENLY TO BOTH SIDES.

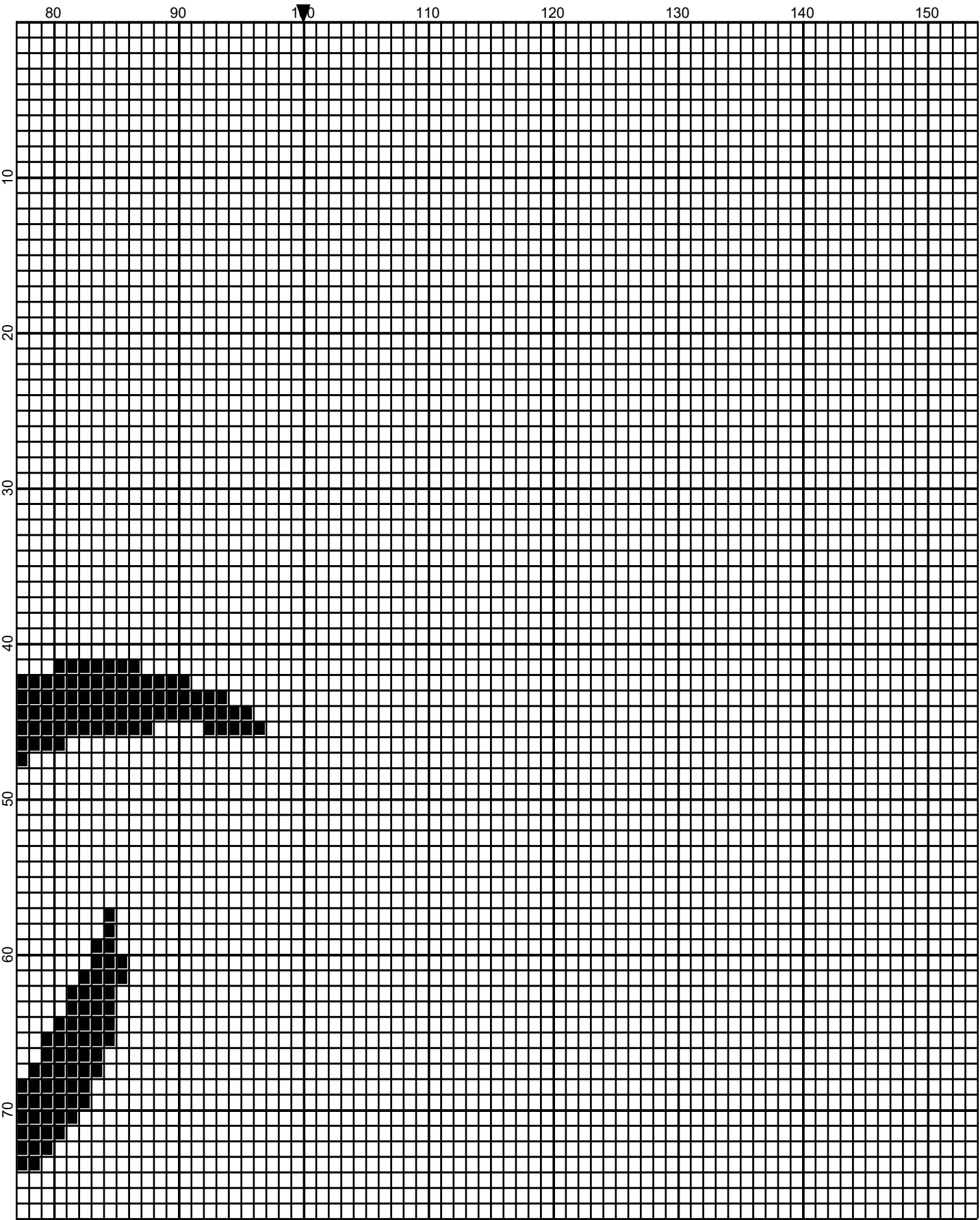
ESTIMATED RED HEART YARN NEEDED:

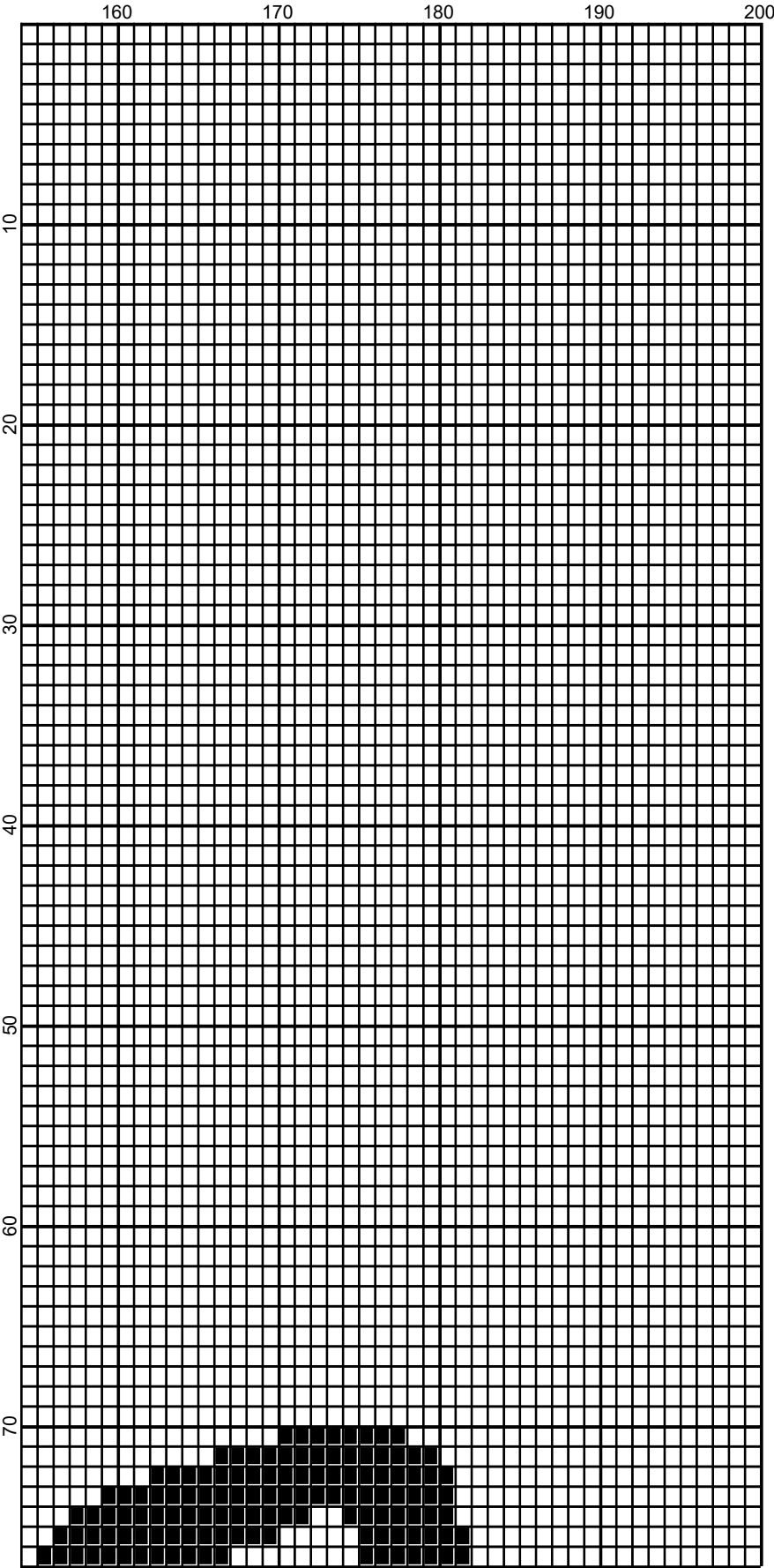
BLACK: YDS 10 OUNCES/463 YDS

WHITE: 48 OUNCES/2408 YDS

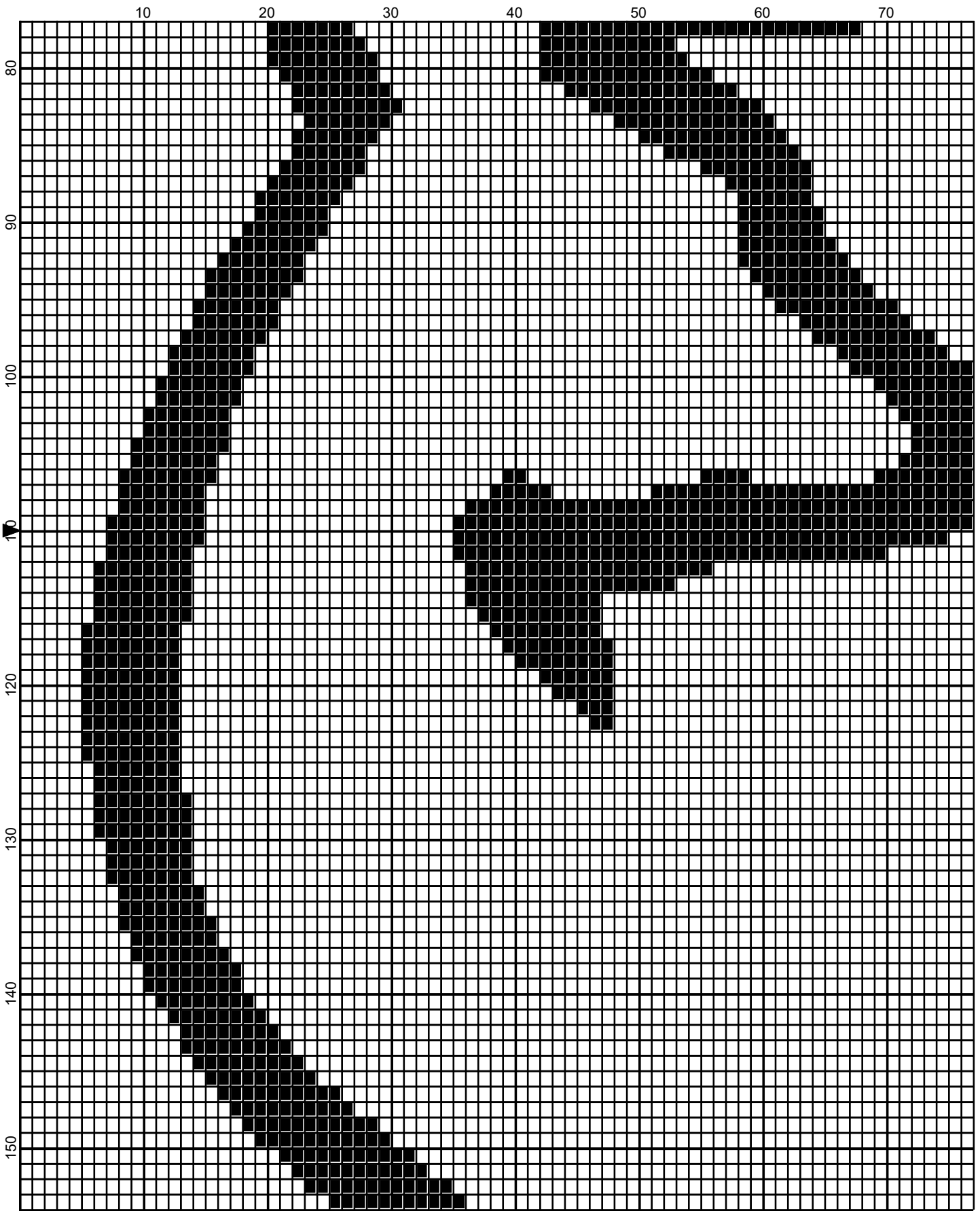


October 2025

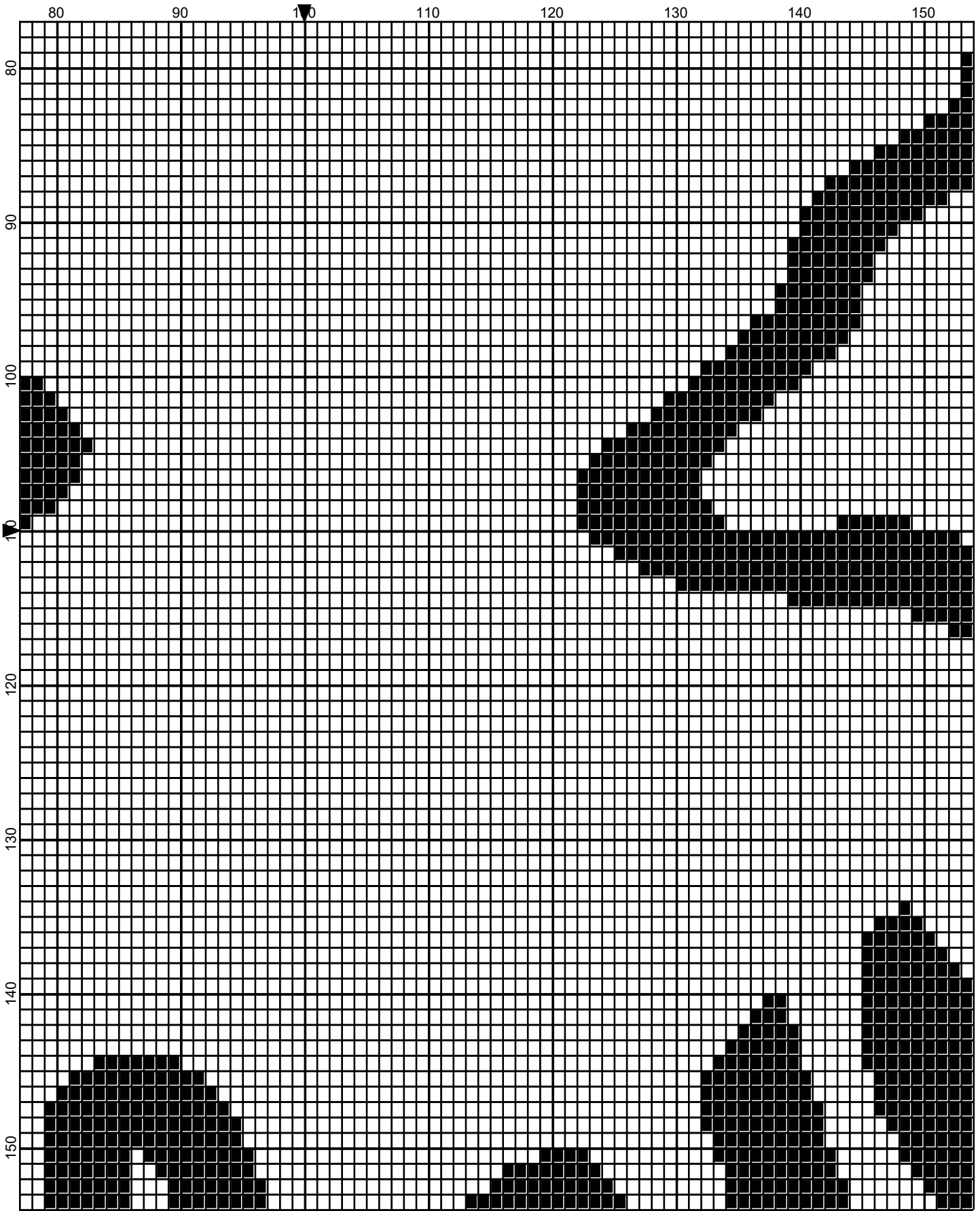




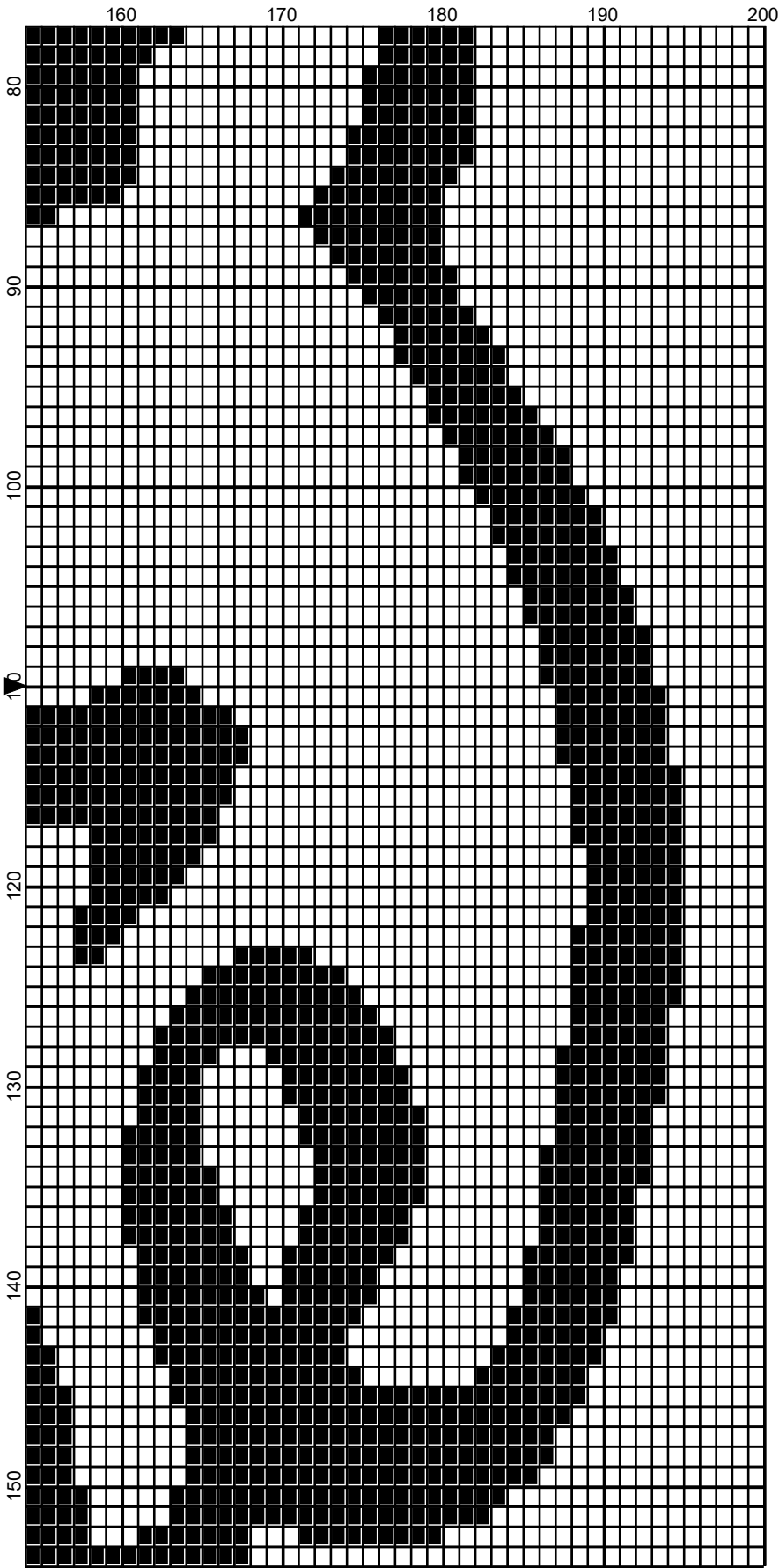
October 2025



October 2025

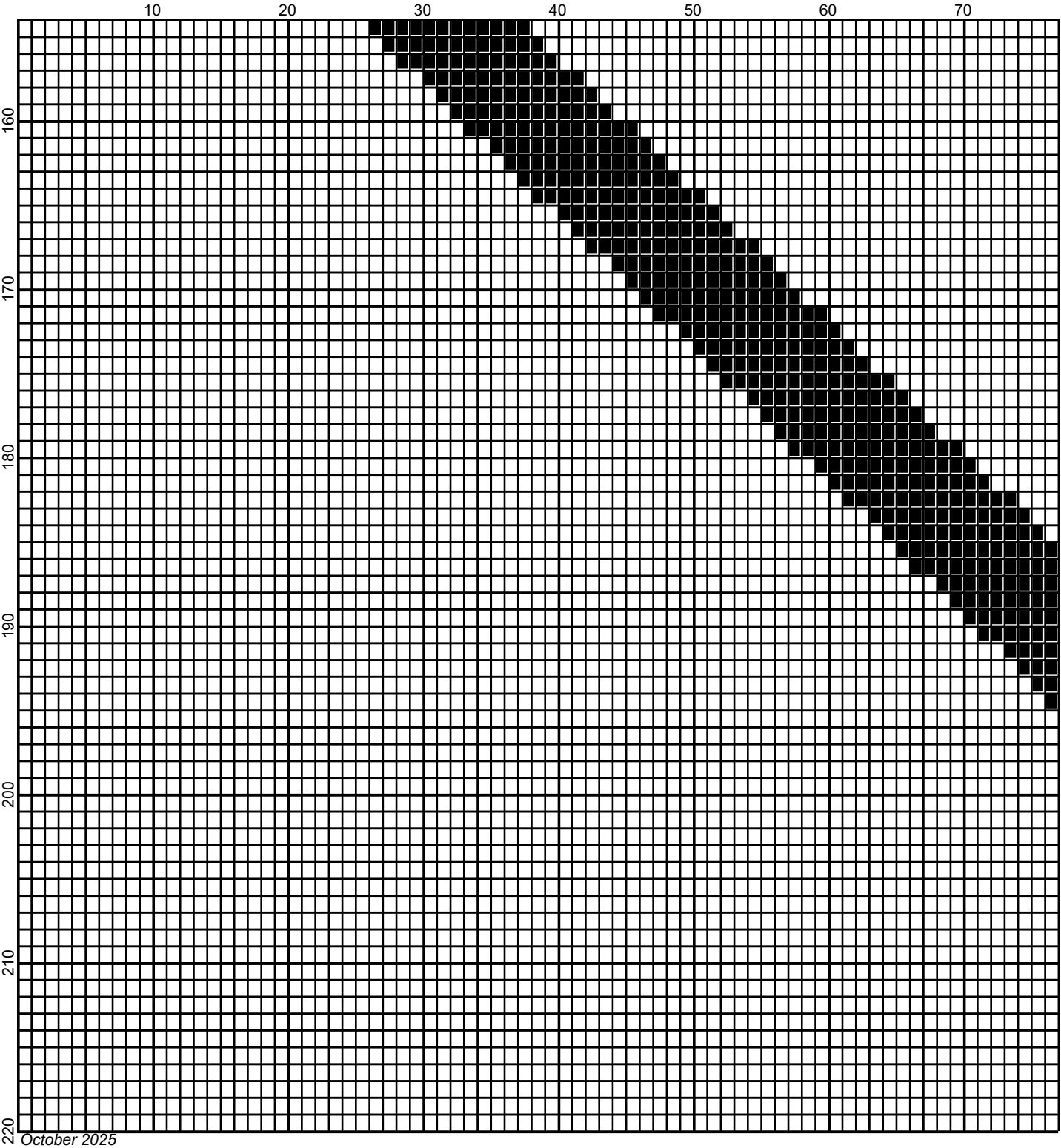


October 2025

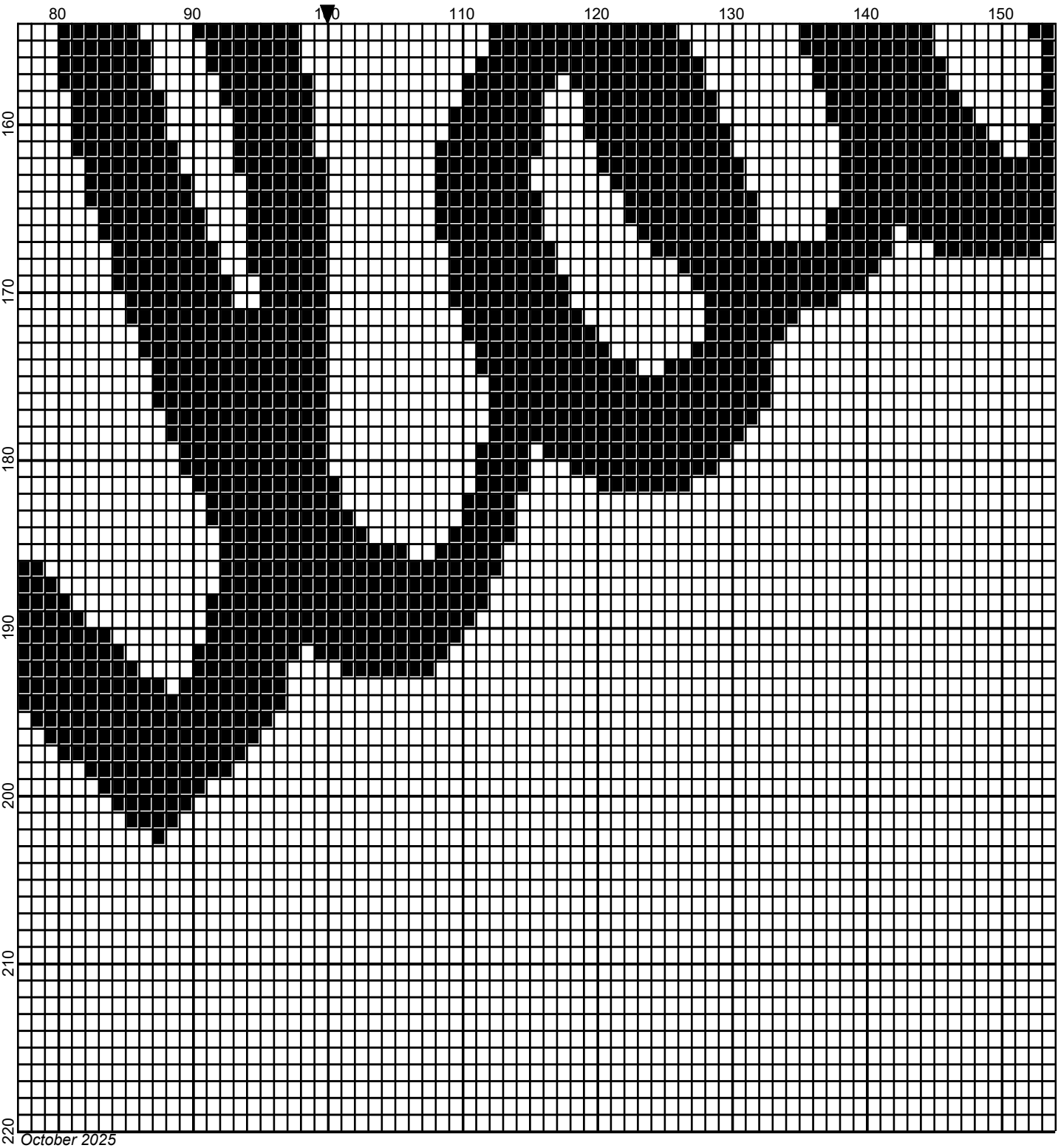


October 2025





Legend:



■ RHC-312    □ RHC-001

