

10

20

30

40

50

60

10

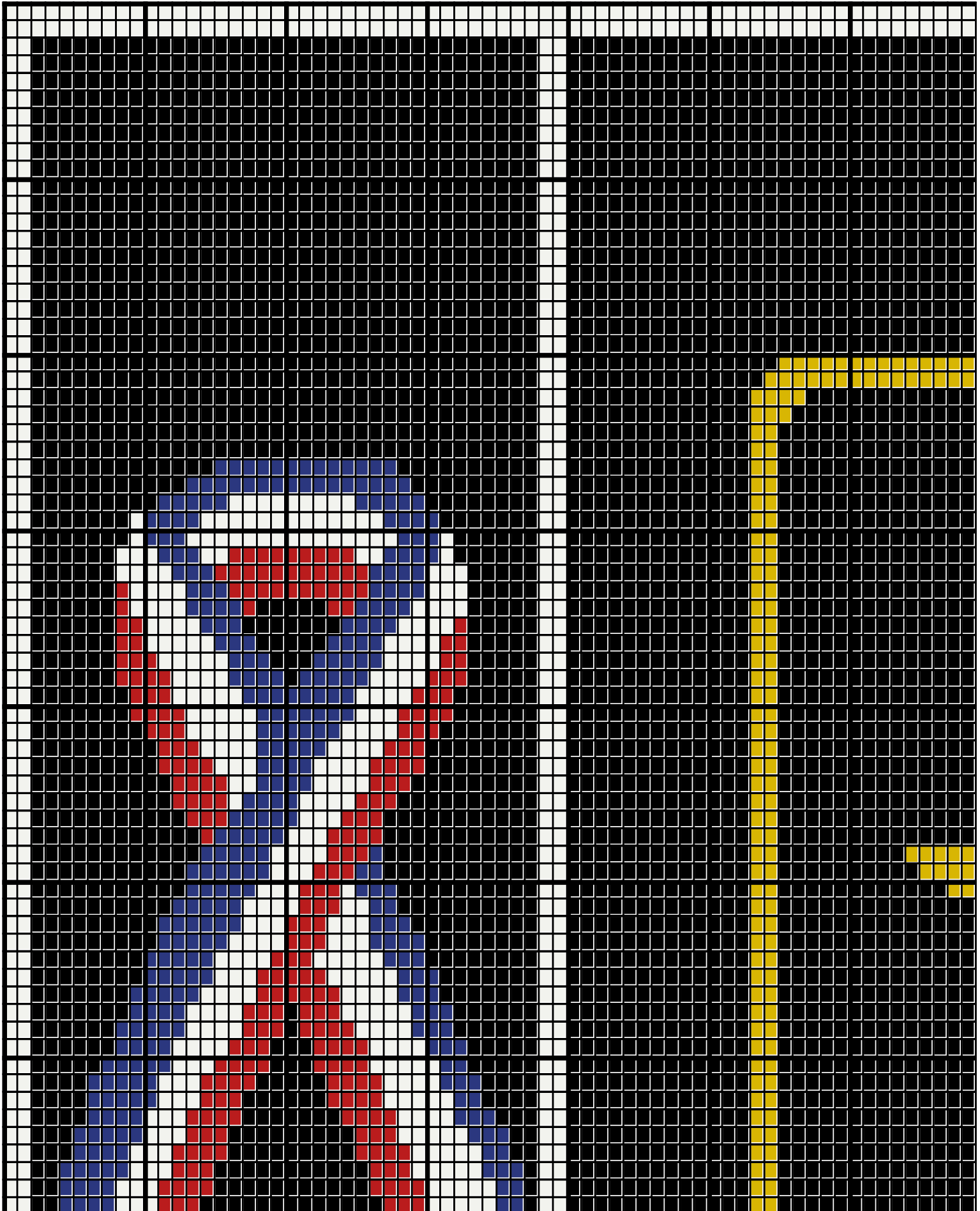
20

30

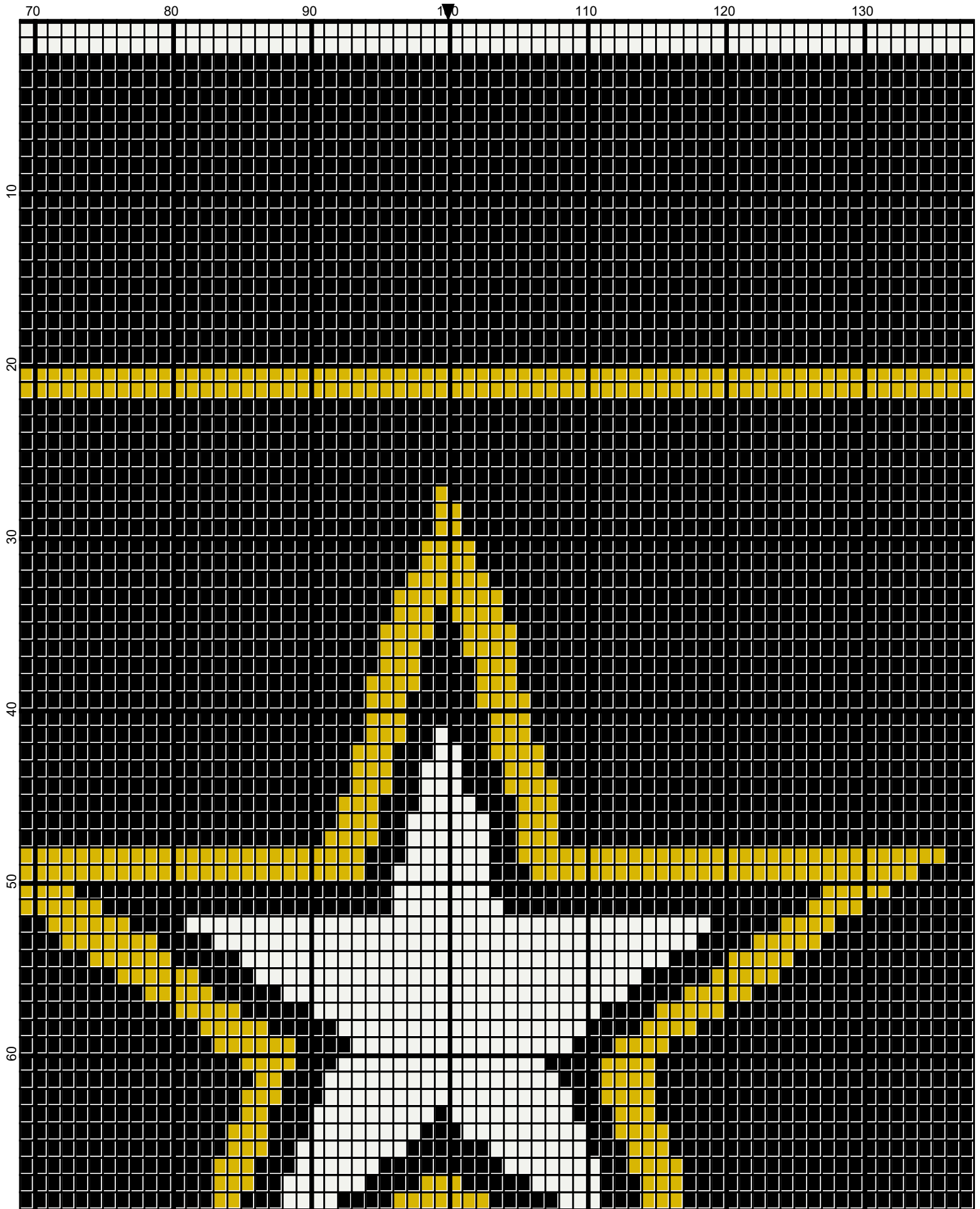
40

50

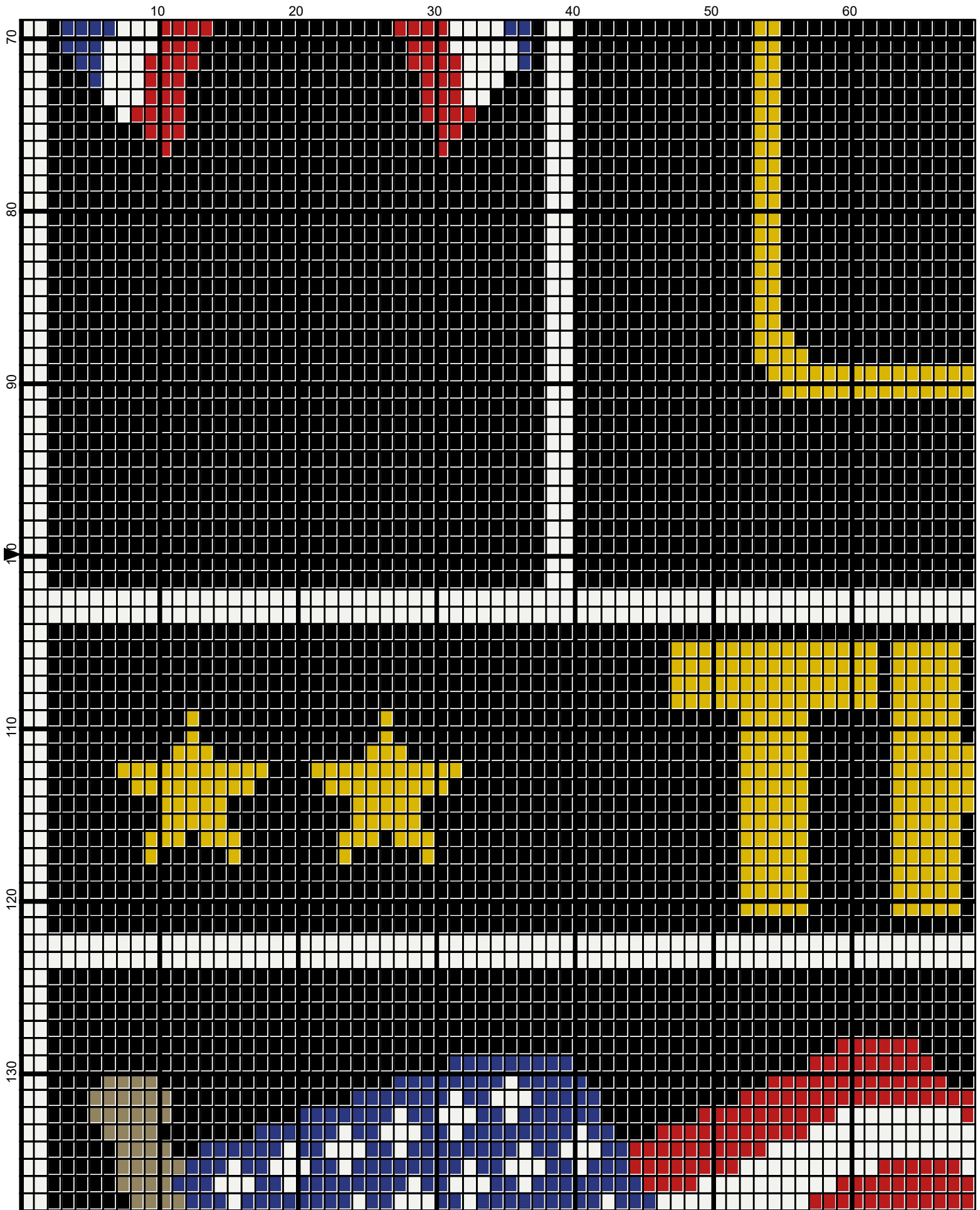
60



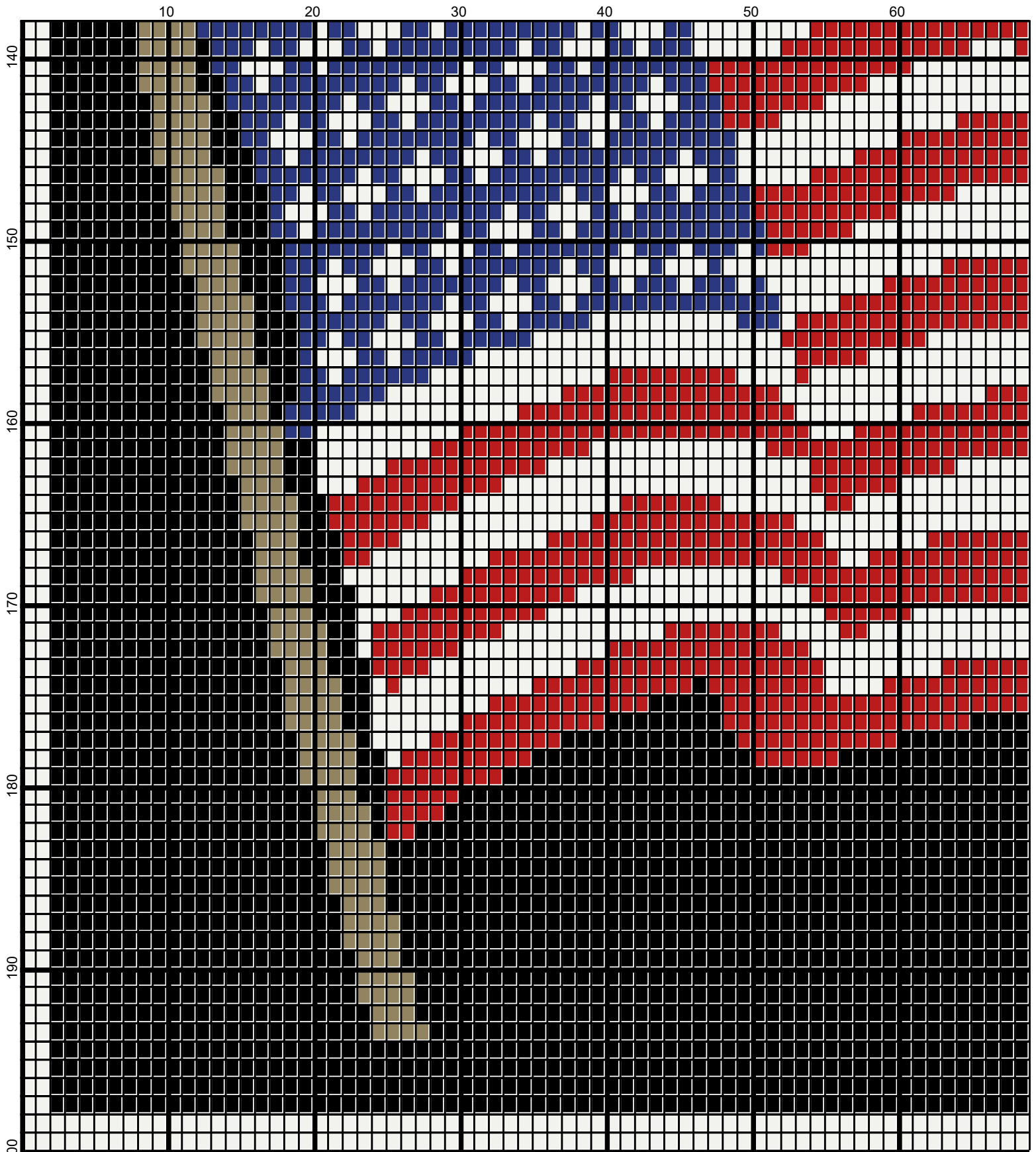
May 2020



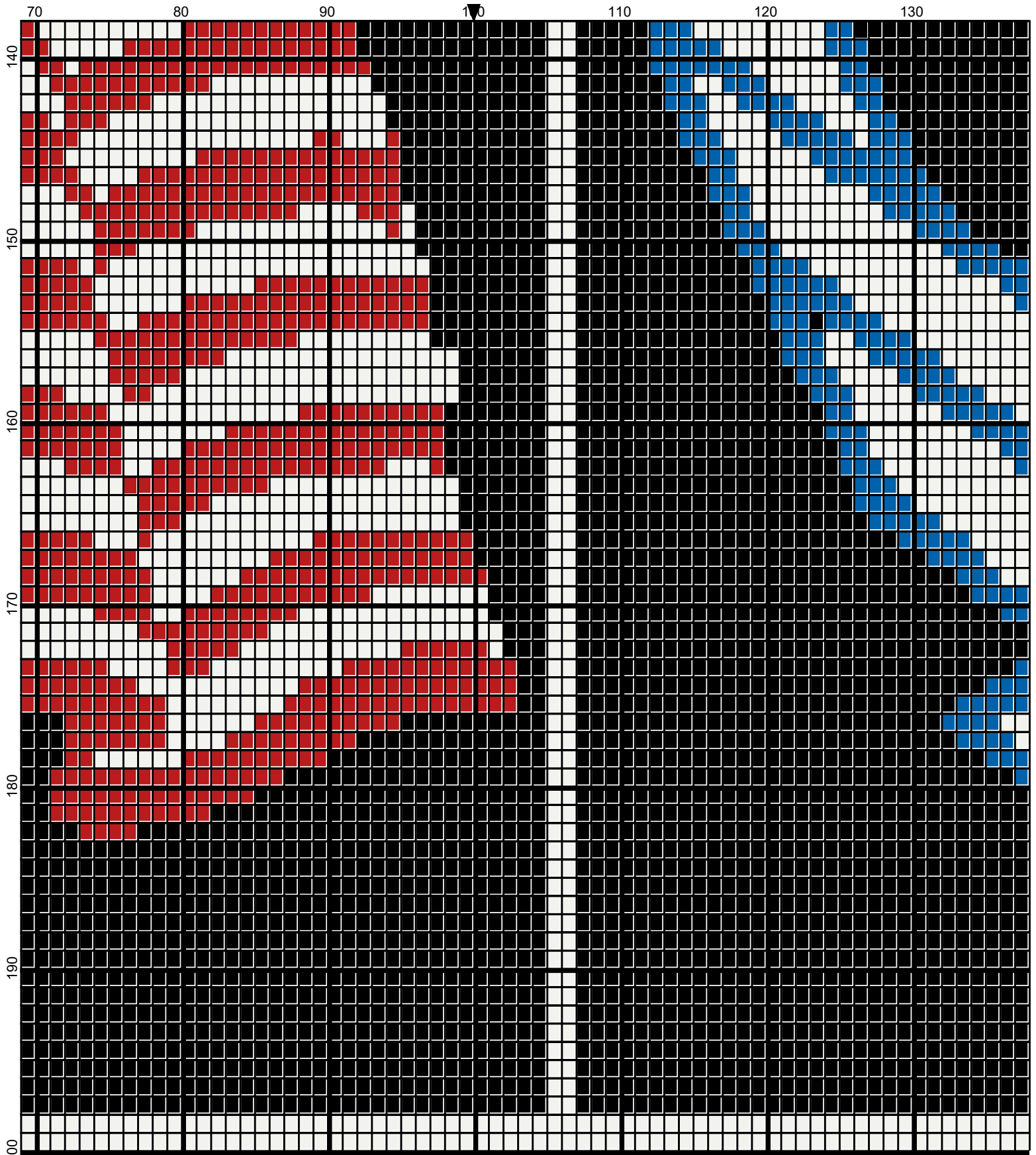




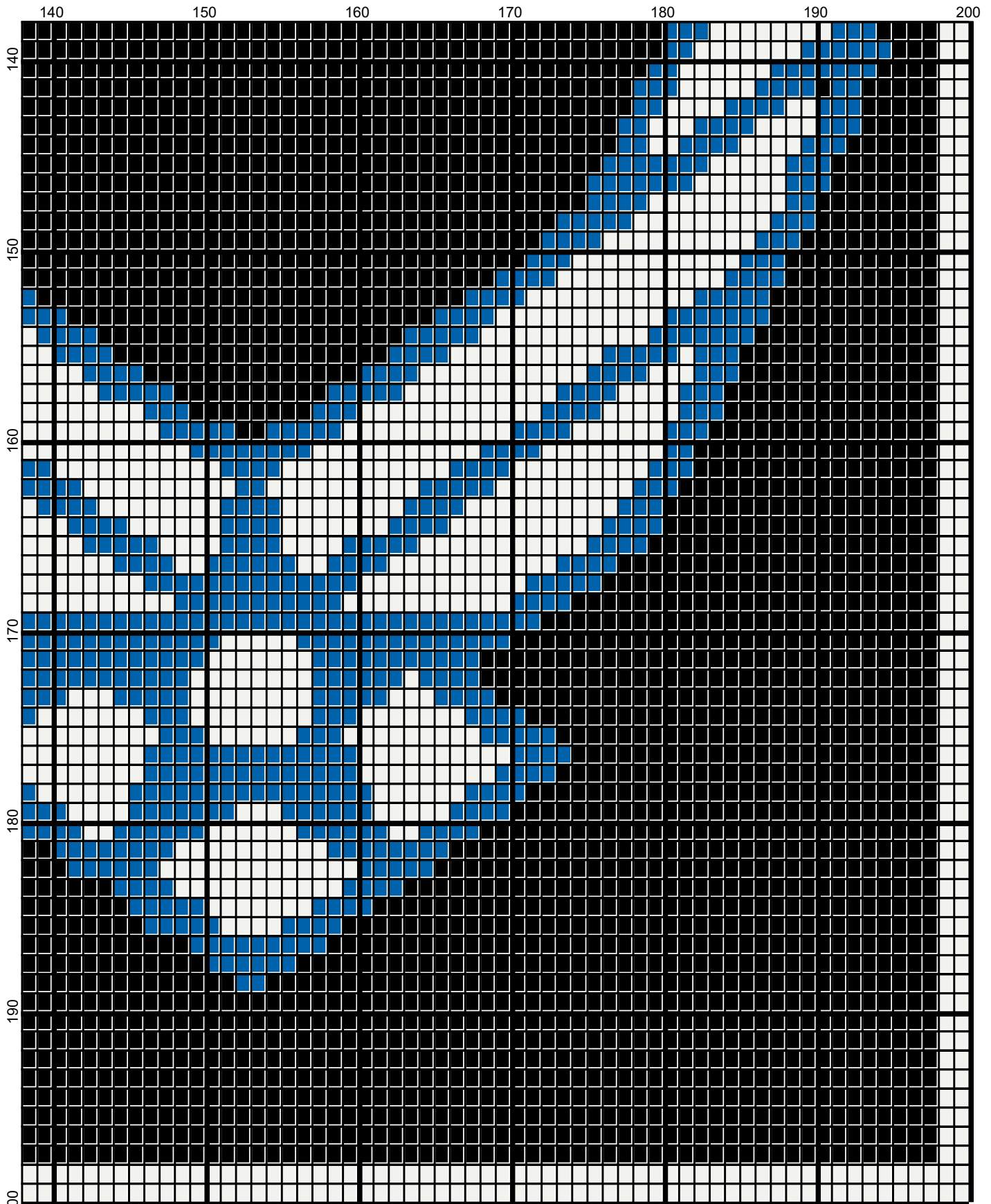




May 2020



May 2020










May 2020

army_patchwork

Author: Donna Hammell
Company: Donna's Crochet Shoppe
Copyright: May 2020
Website: www.donnascrochetshoppe.com
Grid Size: 200W x 200H
Design Area: 20.00" x 25.25" (200 x 202 stitches)

Legend:

 [2] RHS	316 Soft White	 [2] RHS	360 Cafe Latte	 [2] RHS	385 Royal	 [2] RHS	RHTB True Blue
 [2] RHS	312 Black	 [2] RHS	390 Hot Red	 [2] RHS	321 Gold		

Instructions for using the graph.

GAUGE= 5 STS = 1"
4 ROWS = 1"

I USED SIZE "H" AFGHAN HOOK, USE WHATEVER SIZE GIVES YOU THE CORRECT GAUGE. CAN BE DONE IN AFGHAN STITCH OR SINGLE CROCHET.

EACH SQUARE ON THE GRAPH REPRESENTS 1 STITCH. FOR SINGLE CROCHET READ THE CHART FROM RIGHT TO LEFT, AND THEN LEFT TO RIGHT. IF USING AFGHAN STITCH ALWAYS READ FROM THE RIGHT.

TO START: CHAIN ONE MORE STITCH THAN GRAPH.

YOU WILL NEED TO ADD STITCHES TO MAKE THE PIECE WIDER, AND ADD ROWS TO MAKE IT LONGER. THE DESIGN IS CENTERED, SO ADD STITCHES EVENLY TO BOTH SIDES.

ESTIMATED RED HEART YARN NEEDED:

WHITE; 8 OUNCES

GOLD:: 4 OUNCES

BLACK: 36OUNCES

CAFE LATTE: 1 OUNCE

RED: 3 OUNCES

TRUE BLUE: 2 OUNCES

ROYAL: 2 OUNCES