




Legend:
RHS-390 RHS-385 RHS-316

american_flag_240x240

Author: Donna Hammell
Copyright: Decembr 2024
Website: www.donnascrochetshoppe.com
Grid Size: 240W x 240H
Design Area: 24.00" x 30.00" (240 x 240 stitches)

Legend:

 [2] RHS 390 Hot Red  [2] RHS 385 Royal  [2] RHS 316 Soft White

Instructions for using the graph.

GAUGE= 5 STS = 1"
4 ROWS = 1"

I USED SIZE "H" AFGHAN HOOK,USE WHATEVER SIZE GIVES YOU THE CORRECT GAUGE. CAN BE DONE IN AFGHAN STITCH OR SINGLE CROCHET.

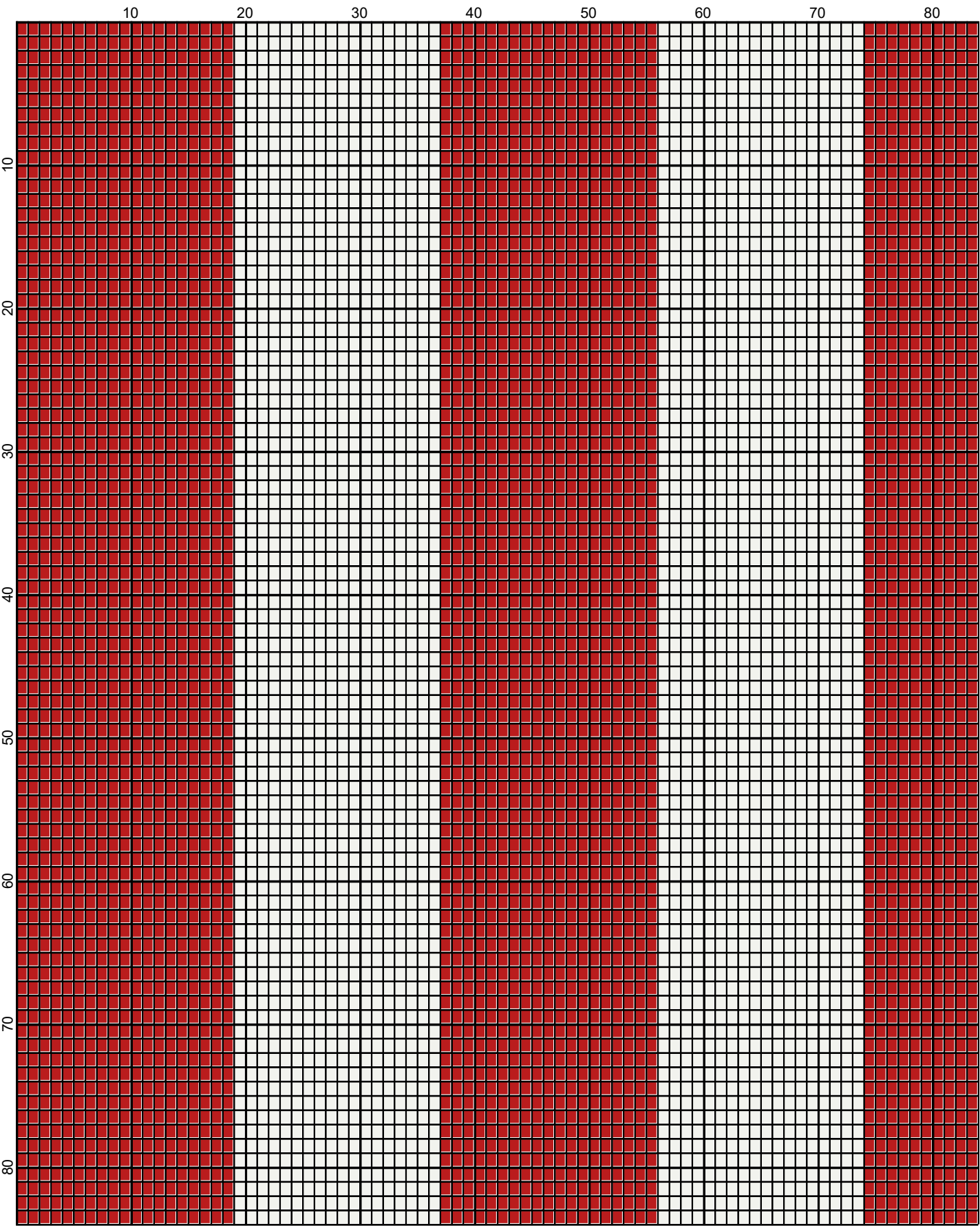
EACH SQUARE ON THE GRAPH REPRESENTS 1 STITCH. FOR SINGLE CROCHET READ THE CHART FROM RIGHT TO LEFT, AND THEN LEFT TO RIGHT. IF USING AFGHAN STITCH ALWAYS READ FROM THE RIGHT.

TO START: CHAIN ONE MORE STITCH THAN GRAPH.

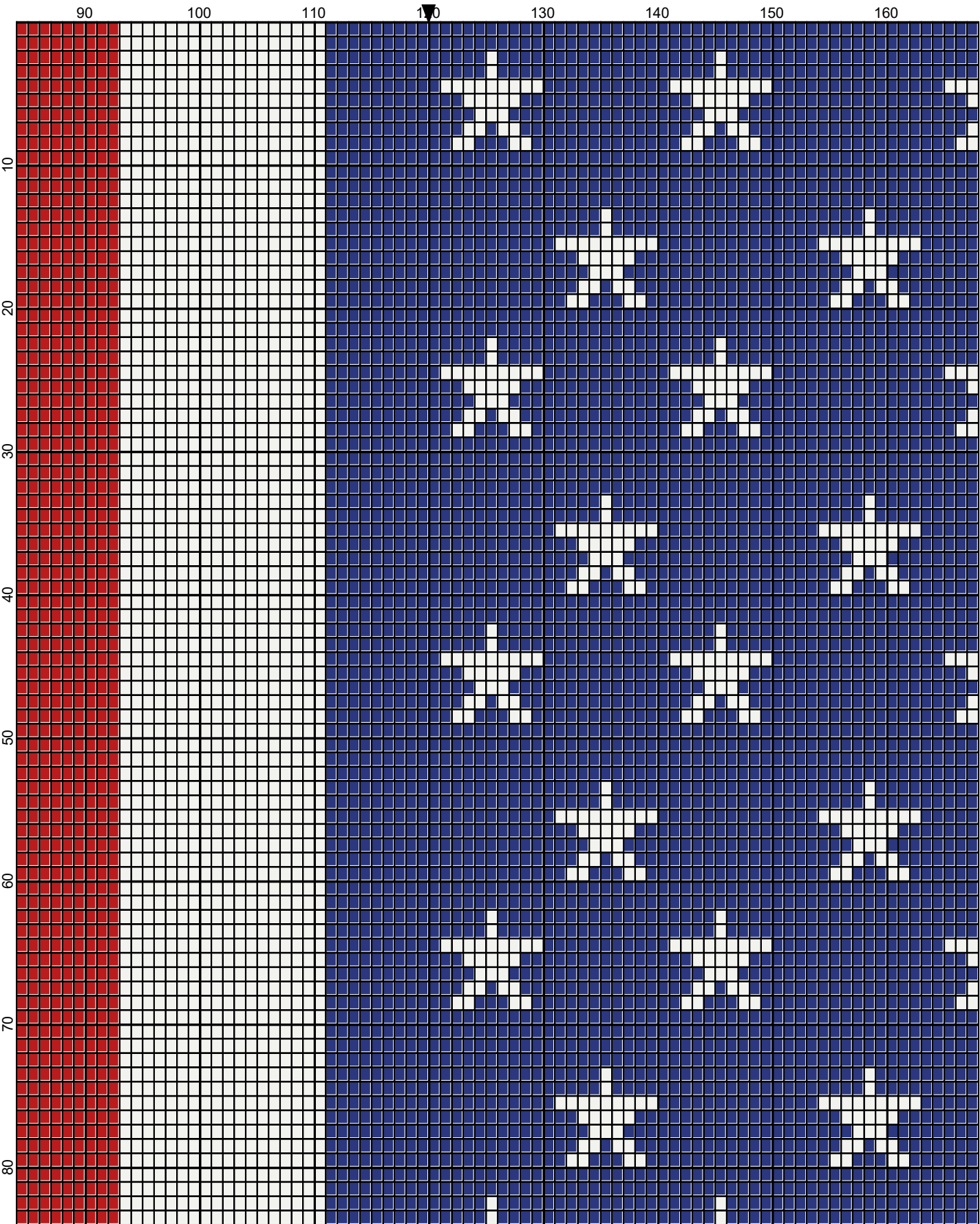
IF YOU NEED TO MAKE THE PIECE WIDER ADD AN EVEN NUMBER OF STITCHES TO BOTH SIDES, AND ADD ROWS TO MAKE IT LONGER. THE DESIGN IS CENTERED, SO ADD STITCHES EVENLY TO BOTH SIDES.

ESTIMATED YARN NEEDED:

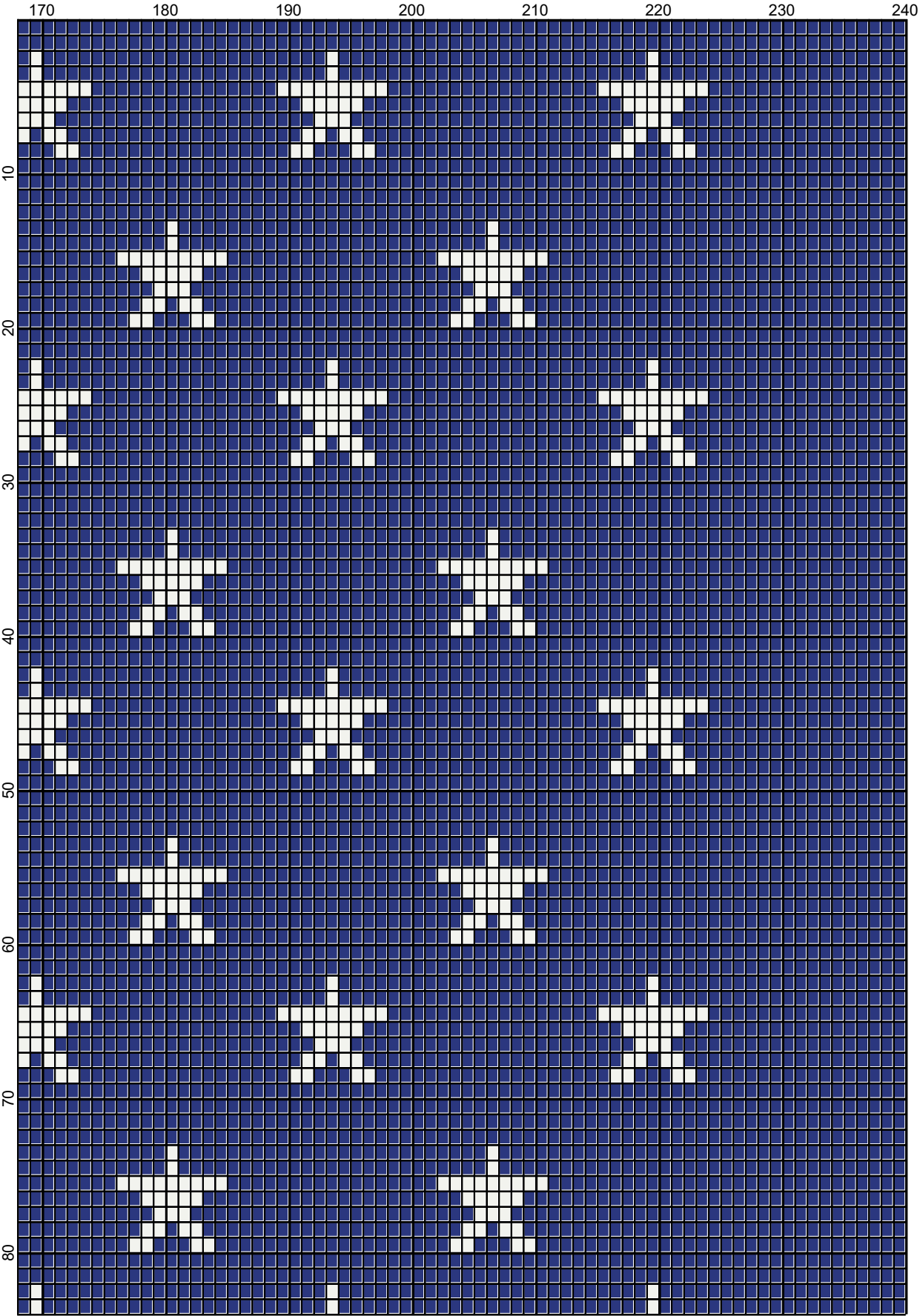
WHITE:28 OUNCES/1385 YDS
RED: 30 OUNCES/1525 YDS
ROYAL BLUE: 18 OUNCES/845 YDS



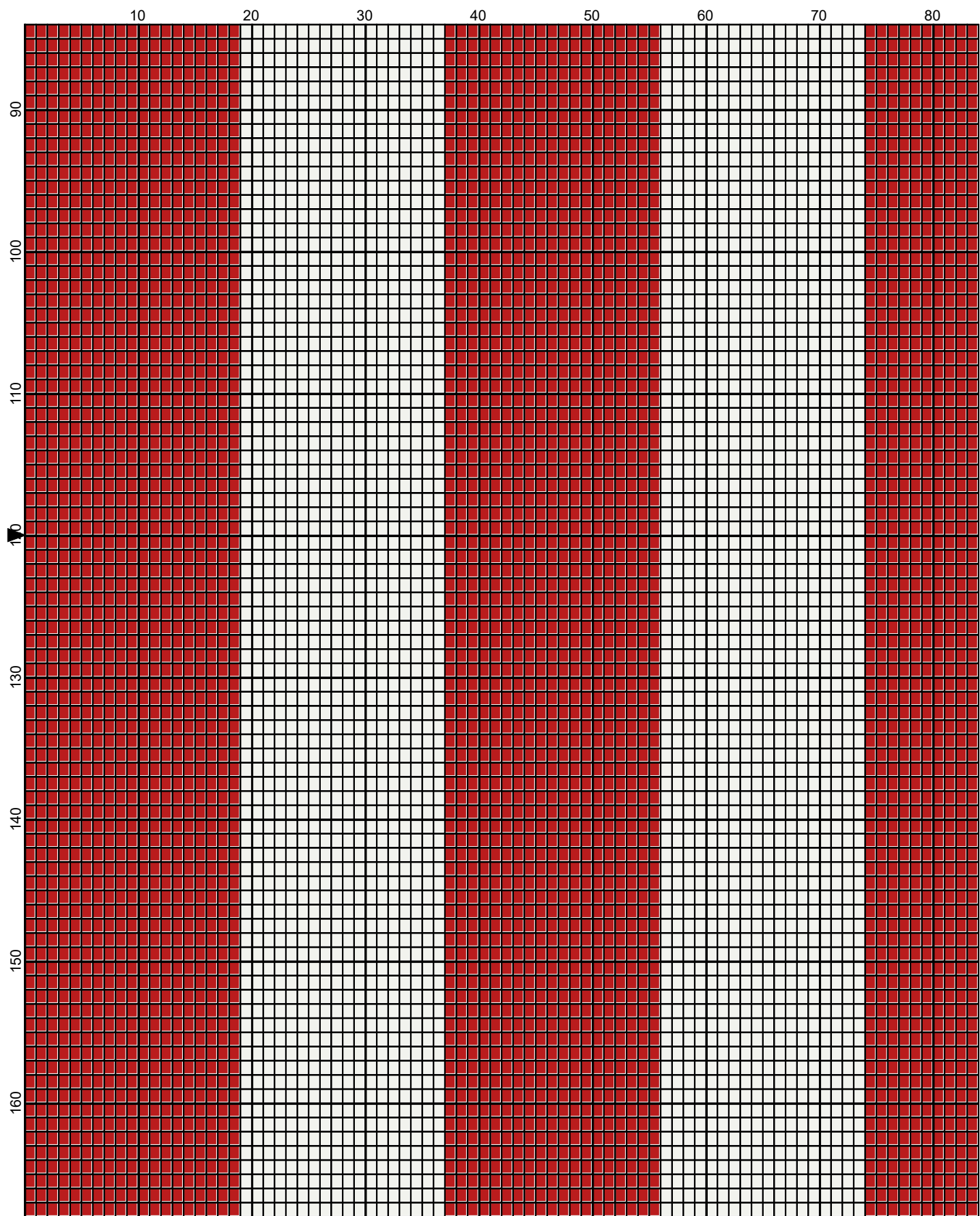
Decembr 2024



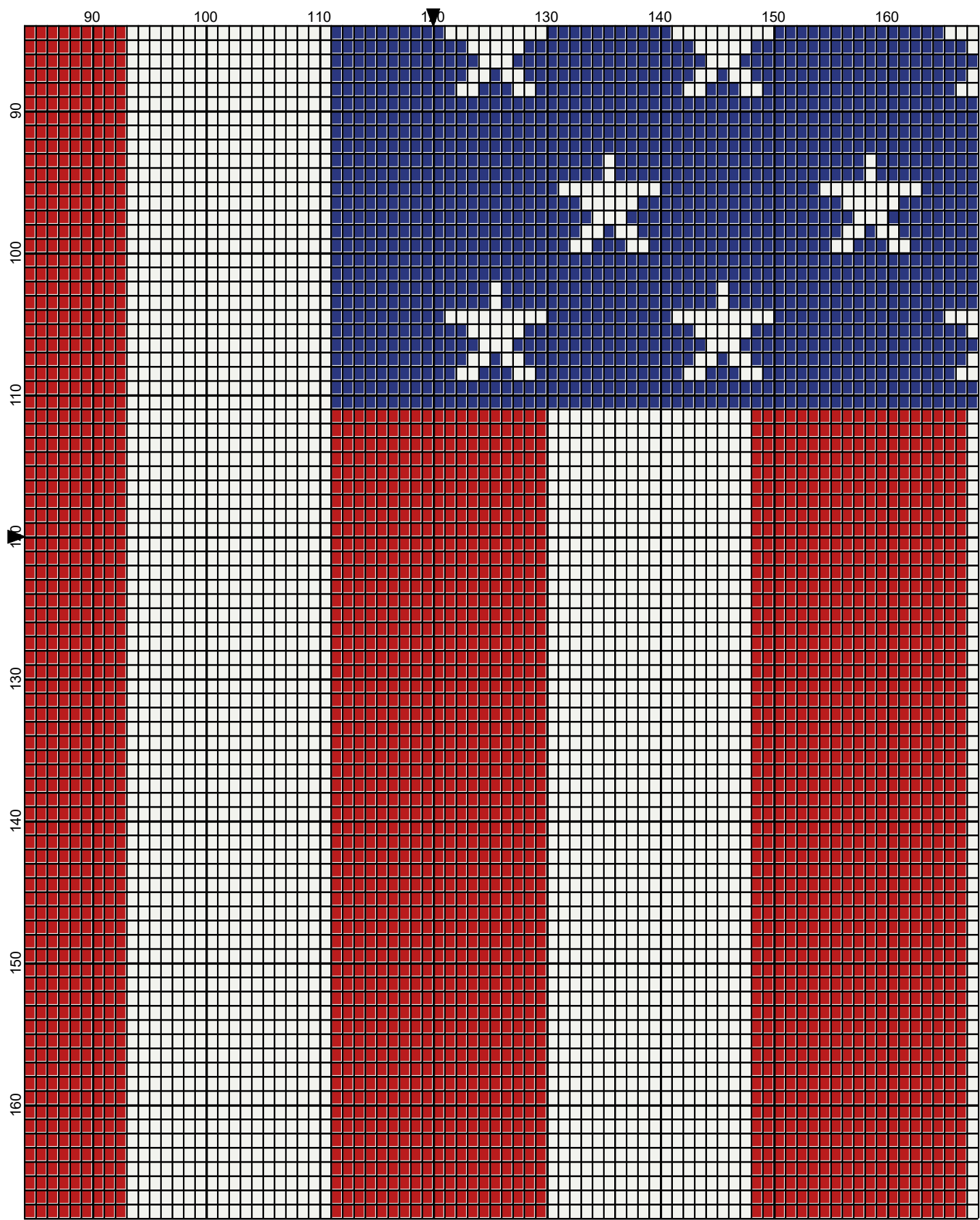
Decembr 2024



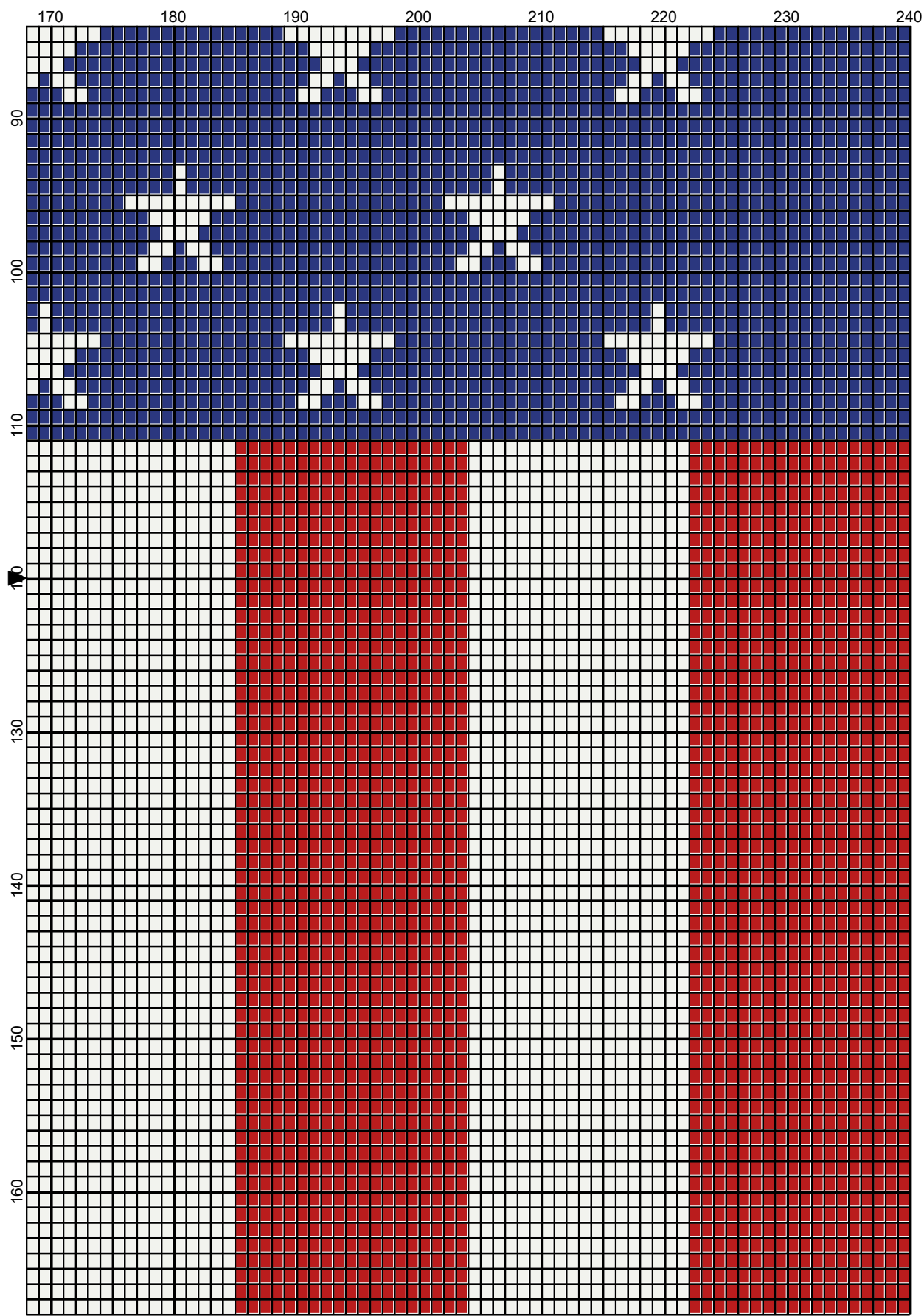
Decembr 2024



Decembr 2024

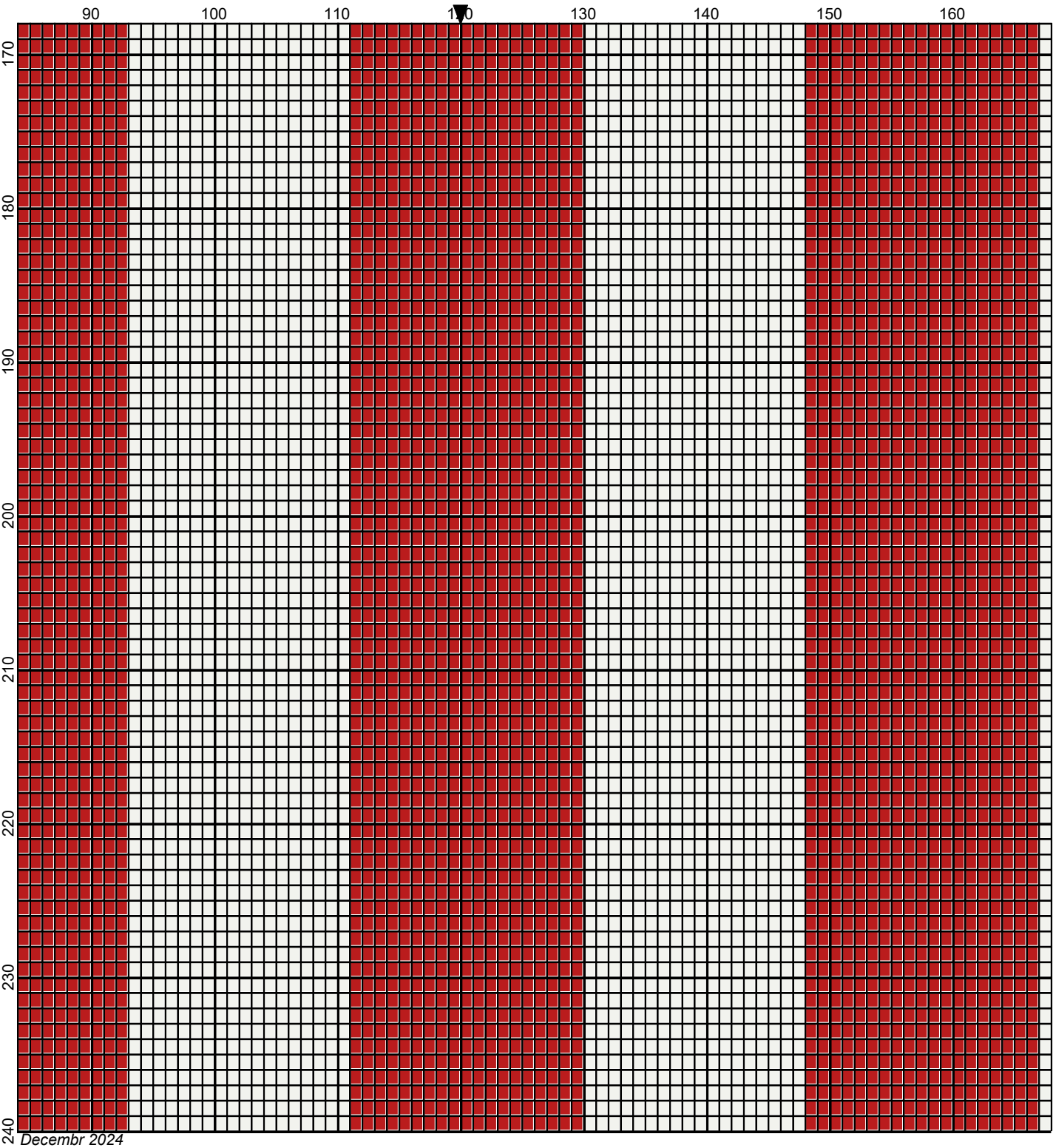


Decembr 2024



Decembr 2024

Printed by PCStitch



RHS-390 RHS-385 RHS-316

