

July 2023

Legend:  
 RHS-724     RHS-381  
Backstitches:  
 RHS-724

# alphabet\_125x125


---

**Author:** Donna Hammell  
**Copyright:** July 2023  
**Website:** [www.donnascrochetshoppe.com](http://www.donnascrochetshoppe.com)  
**Grid Size:** 125W x 125H  
**Design Area:** 12.50" x 15.63" (125 x 125 stitches)

## Legend:

 [2] RHS 724 Baby Pink  [2] RHS 381 Light Blue

## Backstitch Lines:

 RHS-724 Baby Pink

Instructions for using the graph.

GAUGE= 5 STS = 1"  
4 ROWS = 1"

I USED SIZE "H" AFGHAN HOOK,USE WHATEVER SIZE GIVES YOU THE CORRECT GAUGE. CAN BE DONE IN AFGHAN STITCH OR SINGLE CROCHET.

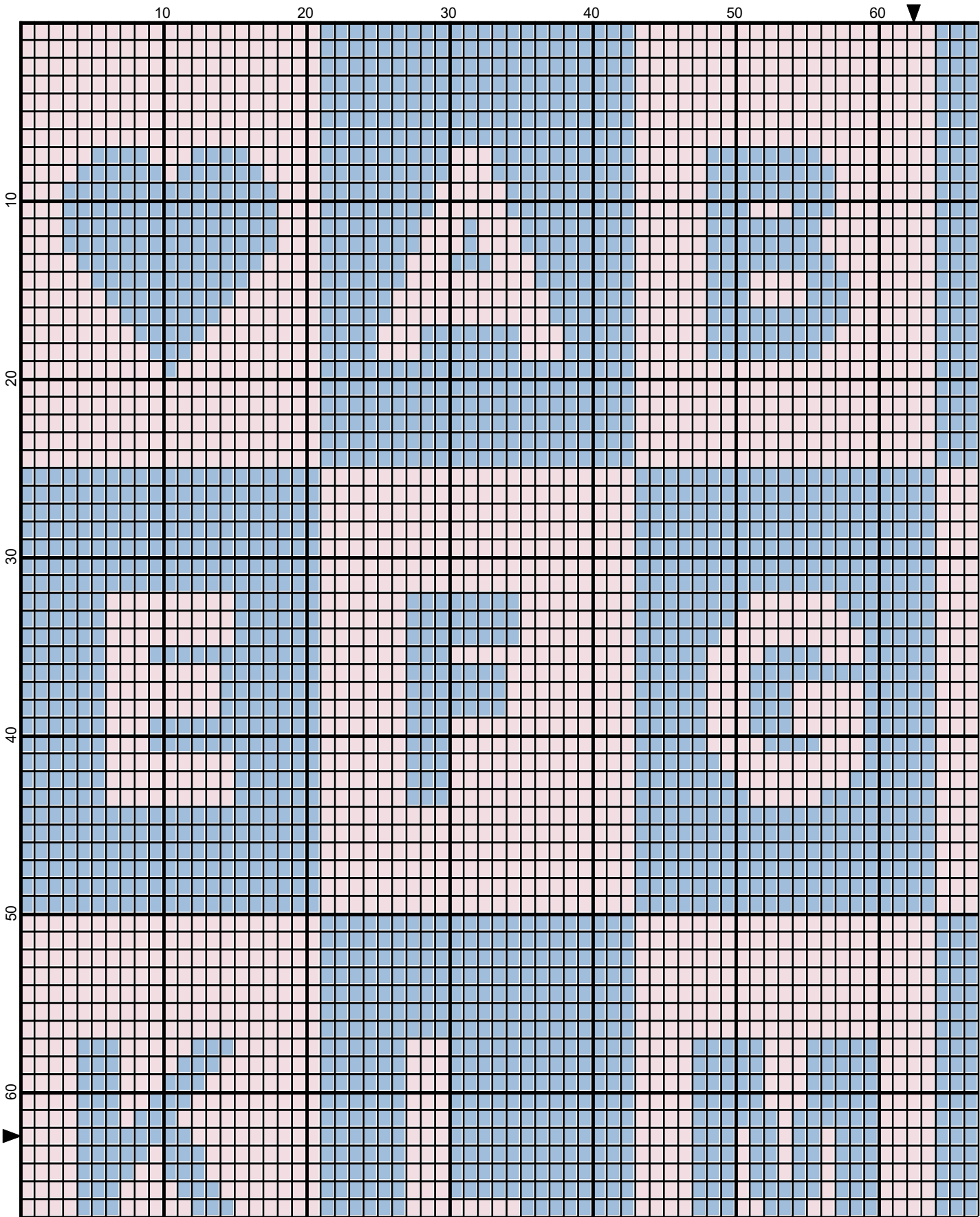
EACH SQUARE ON THE GRAPH REPRESENTS 1 STITCH. FOR SINGLE CROCHET READ THE CHART FROM RIGHT TO LEFT, AND THEN LEFT TO RIGHT. IF USING AFGHAN STITCH ALWAYS READ FROM THE RIGHT.

TO START: CHAIN ONE MORE STITCH THAN GRAPH.

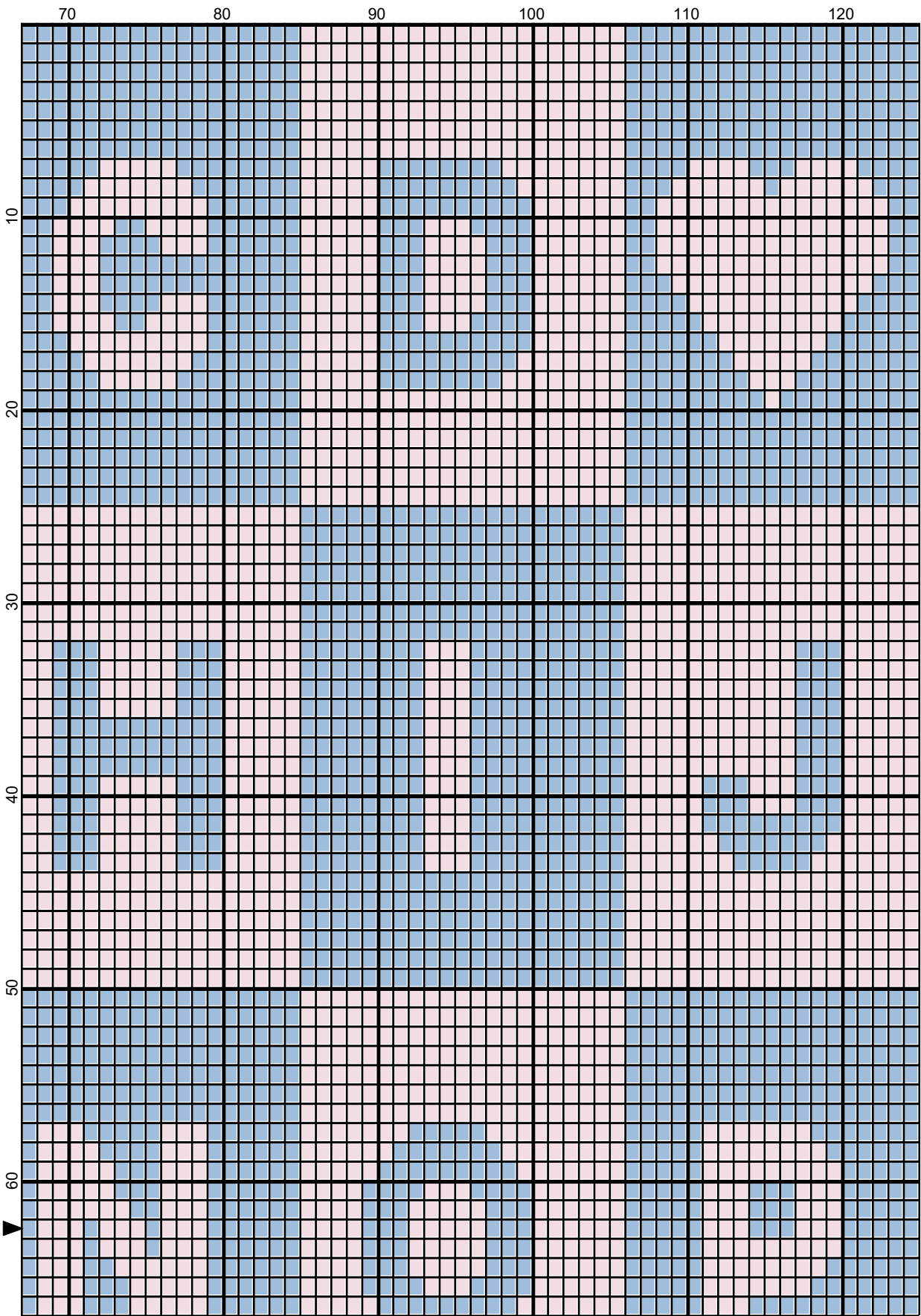
ESTIMATED RED HEART YARN NEEDED:

BABY PINK : 506 YDS

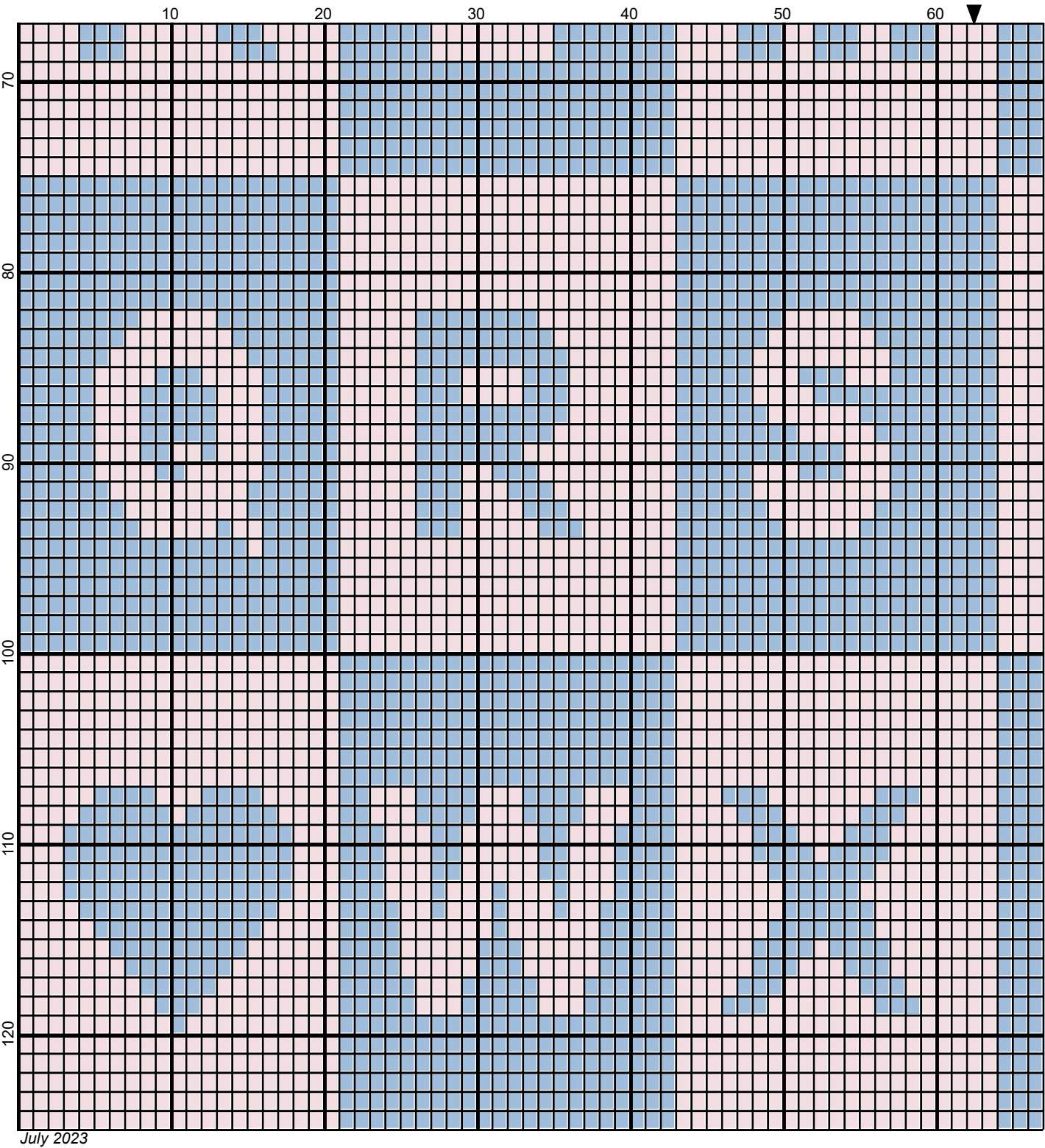
LT BLUE: 510 YDS



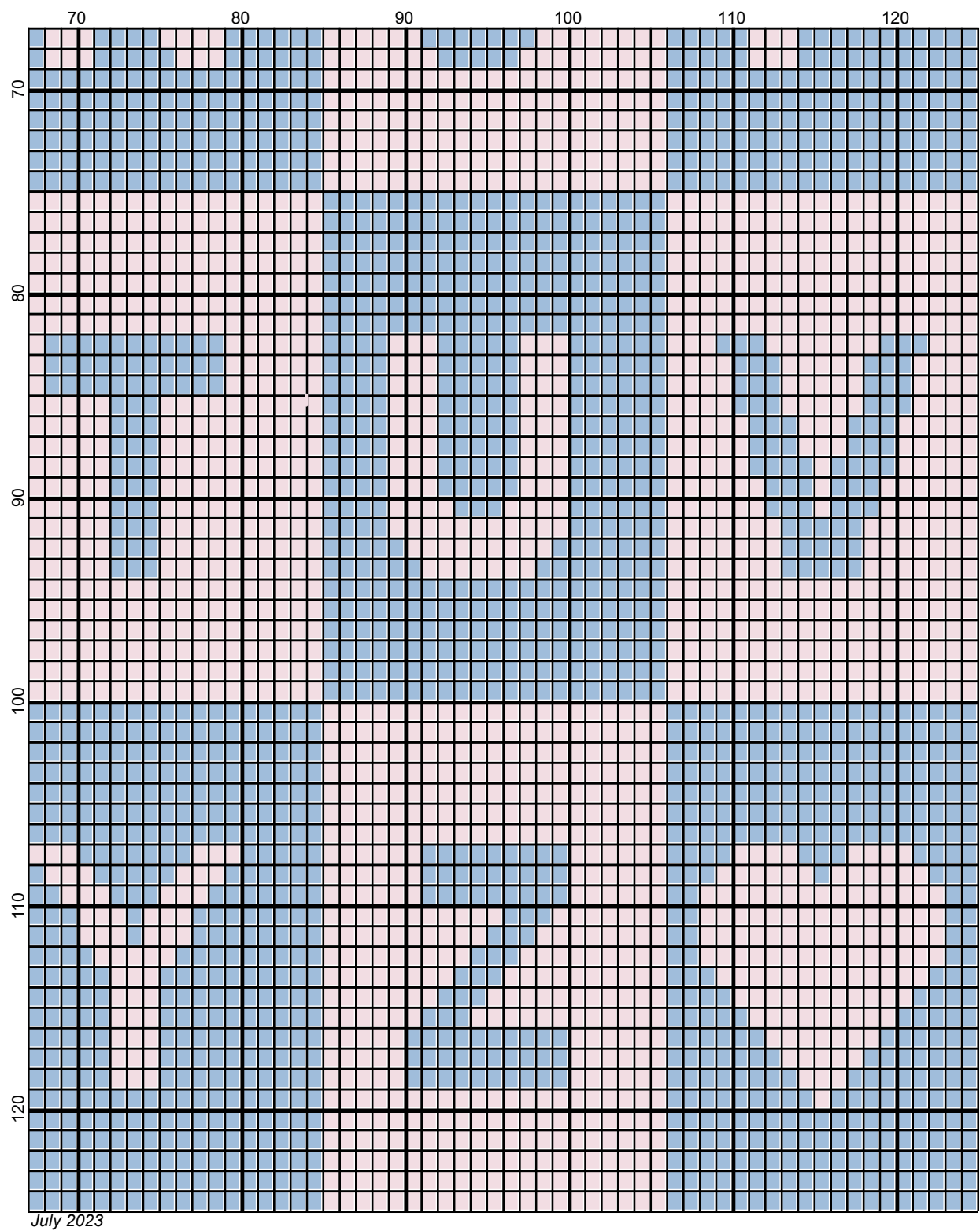
July 2023



July 2023



Legend:  
RHS-724   RHS-381



July 2023

Backstitches:  
— RHS-724